

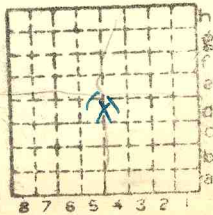
Doelds ce.

~~home Stas ce~~

1565

Index 3269

609



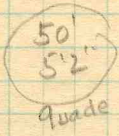
Sec.	34
T.	9 ^W S
R.	5 ^W E
Index No.	

✓



Town, *Carriers Mills*
 Local Authority,

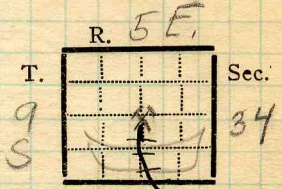
Surface alt., ft.
 Depth to coal, ft.
 Alt. top coal, ft.
 Thickness: Av. *60* in.
 Max. in., Min. in.



Level: Auth.,

Method,

R. R., *Spur of C.C. + St. L.*



Location: authority,

(Show R.R.)

Auer #4, Operator Mine Name or No.

1937
 19 *Dodds Coal Co* *Dodds*
(defunct)

Successor to
 Date

Succeeded by *Lone Star Coal Co*
 Date *(probably an error - #609)*
 Succeeded by *see 34 (C.I.)*
 Date *J.O., 1956*

PRODUCTION.

							U. S. No.
<i>1925</i>		<i>40000 yms</i>					
<i>1/28/26</i>		<i>Mine idle</i>					
<i>1925</i>	<i>26</i>	<i>Idle (kept. of mines)</i>					
<i>27</i>	<i>—</i>	<i>—</i>					
<i>28</i>		<i>Idle</i>					
<i>"41"</i>	<i>to 5'</i>	<i>of No 5 (mine report)</i>			<i>1926</i>		

Geol. Notes? *No* Coop. No. *23* Coal secs? *No*
 Analyses No. *No*

Examined by Ref.

Coal bed name: Local **SHIPPING MINE** Survey No. *5*
 County *Saline* Index No. *0934.44*
 K.—ACTIVE SHIPPING ~~OR LOCAL~~ COAL MINE.