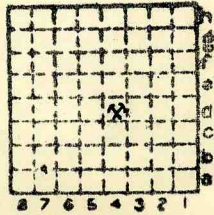




Form 180

BREWENTON. C.C., #22  
 (SOUTHERN GEM CC #2)  
 Co. No. 251  
 S-21

Mi. # 134



Sec. 12  
 T. 5 S.  
 R. 1 E.  
 Index No.

~~PERRY COUNTY~~  
 FRANKLIN CO.





Mine originally operated by: (1)

Date

1918

Modern Coal Co.

Original name or number:

Illinois Coal Report 1954 p. 75

**Sesser**

LATER OPERATORS

Date	Operator	Name or No.
2 1920	Southern Gem Coal Co.	No. 2
3 1927	Brewerton Coal Co.	No. 22
4		
5		
6		
7		
8		
9		
10		
11		
12		
13		
14		

\*Also owners

#See ownership sheet

**SHAFT** Railroad, Wagon, Strip, Idle, Abandoned

668' IDENTIFICATION

County No. \_\_\_\_\_

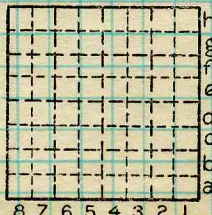
Coal Report No. \_\_\_\_\_

Quad.

County **FRANKLIN**

9' Coal No.

6



Sec.  
T. N.  
S.  
R. E.  
W.  
Index No.

**FRANKLIN MERRY COAL MINE OPERATOR**



Mine originally operated by: (1)

Date

*Southern Gem Coal Co*

Original name or number:

Illinois Coal Report

D.

LATER OPERATORS

Date

Operator

Name or No.

2

3

*Interstate Coal Co*

*#22*

4

5

6

7

8

9

10

11

12

13

14

*Idle for  
since before 1939*

\*Also owners

#See ownership sheet

Railroad, Wagon, Strip, Idle, Abandoned

IDENTIFICATION

County No. 251

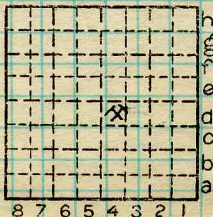
Coal No.

Coal Report No. 921

6

Quad. DuQuoin

County Franklin



Sec. 12

T. 5 N. S.

R. 1 E.

Index No.

COAL MINE OPERATOR

*12 D4*



Mine originally operated by: (1)  
 Date **Modern Coal Co.**  
**1917**

Original name or number:  
 Illinois Coal Report **1917** p.

LATER OPERATORS

Date	Operator	Name or No.
2 1927	Southern Gem Coal Corp. Mine	#2
3 1928	Brewerton Coal Co.	#22
4 1933	West Frankfort	
5		
6		
7		
8		
9		
10		
11		
12		
13		
14		

\* Also owners #See ownership sheet

Railroad, Wagon, Idle, Abandoned

C.B. & Q.

SHIPPING MINE IDENTIFICATION

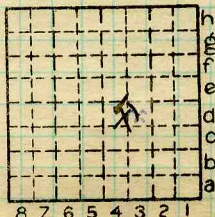
County No. **251**

Coal No. **6**

Quad. **254**

Part

County **Franklin**



Sec. **12**

T. **5**

R. **1**

Index No. **0412 d4**

COAL MINE OPERATOR



( Sheets) COAL PRODUCTION (Sheet )

Period						Tons	
Mo.	Day	Year	Mo.	Day	Year		
					1931	62	445
					1932	72	699
					1933	253	436
					1934	195	184
					1935		
					1936		
						583	734

idle  
idle

SUMMARIES

No.	to	No.		
1917		1934	3	322 834

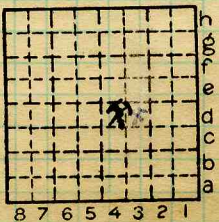
Railroad, Wagon, Idle, Abandoned  
IDENTIFICATION

SHIPPING MINE

County No. 251 Coal No. 6

Quad. 254 Part

County Franklin ~~PERRY~~



Sec. 12

T. 5

R. 1

Index No. 0412 d

COAL MINE—PRODUCTION



LOCATION AND ELEVATION

Location: side R. R.  
 side R. R.  
 side Highway No.

on top. map Location sheet

Elevation: Method, 1. Est. ( ) \_\_\_\_\_ ft.  
 2. Inst. (kind \_\_\_\_\_) 463.2 ft.

By	DEPTH	Data sheet
Authority	To coal	<u>690</u> ft.
Authority	Rail to rail	_____ ft.
	Top of coal above rail. (Est. Rule)	_____ ft.
	To coal	_____ ft.

ALTITUDE OF TOP OF COAL

By estimated data \_\_\_\_\_  
 By instrumental data \_\_\_\_\_ -227 ft.

Max.	Thickness	in. Min.	in. Aver.	in.
			<u>108</u>	

GEOLOGICAL DATA

Mine notes, date \_\_\_\_\_  
 \_\_\_\_\_  
 \_\_\_\_\_  
 \_\_\_\_\_  
 \_\_\_\_\_

Coop No. 134 Pyr. inv. Coal Ash inv.

CHEMICAL DATA

Analyses Face	U. I.	B. M.	Others
Car	U. I. <u>12701-2-3</u>	B. M.	Others
Org. Sulf	U. I. <u>12720-21-22</u>	B. M.	Others
Ash fusion	U. I.	B. M.	Others
Ash anal.	U. I.	B. M.	Others
	U. I.	B. M.	Others

Classification

Misc. tests: Coking. Cleaning Boiler

Published descriptions:—

Railroad, Wagon, Idle, Abandoned

SHIPPING MINE IDENTIFICATION

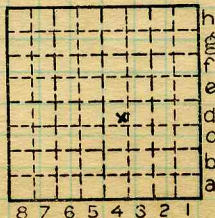
County No. 251

Coal No. 6

Quad. Duquoin

Part

County Franklin REBRY



Sec. 12

T. 5 S.

R. 1 E.

Index No. 0412.4d

COAL MINE LOCATION AND DATA



Location and Elevation Data

Location:                      Exact                       Approximate

(Approximate only if no trace or record of original exists)

Location by Duquoin topographic sheet and W.B. Roe

Date May 21, 1931                      Notebook No. 603                      Page 11(90)

Looseleaf ref. \_\_\_\_\_                      7/28/32                      corrected 614                      15(2115)

Map files No. 11-13-27c

Description of location

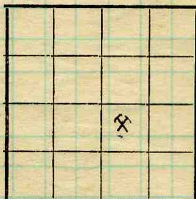
Position in sec., 1/4 sec., 40 acres

\_\_\_\_\_ feet from North line

2100 feet from East line

2150 feet from South line

\_\_\_\_\_ feet from West line



Sec. 12

T.	5	S.
R.	1	E.

Farm \_\_\_\_\_

No. \_\_\_\_\_

Company \_\_\_\_\_

Brewerton Coal Co

No. 22 mine

County No. 251

Other description: \_\_\_\_\_

Elevation 463.2 ft.

By W.B. Roe

Method: Level, transit, alidade, hand level

Plane table and alidade

Elevation of Top of rail

Height of point above ground 3"

Date 7-28-1932                      Notebook 614                      P. 15(2115)

Looseleaf ref. \_\_\_\_\_

Map files No. \_\_\_\_\_

Description of item: (drill hole, mine, etc.) Hoist shaft - shipping mine

**SHIPPING MINE**

County Franklin

Quadrangle Duquoin

Index No. 0412.4d



Location and Elevation Data

Location: Exact  Approximate

(Approximate only if no trace or record of original exists)

Location by W.B. Roe

Date May 21, 1931 <sup>7/28/32</sup> Notebook No. ~~603~~ 614 Page 15 (211)  
15 (2113)

Looseleaf ref. \_\_\_\_\_

Map files No. 11-73-27c

Description of location

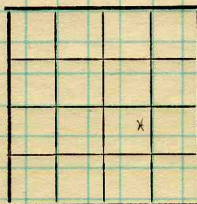
Position in sec.,  $\frac{1}{4}$  sec., 40 acres

\_\_\_\_\_ feet from North line

\_\_\_\_\_ feet from East line

\_\_\_\_\_ feet from South line

\_\_\_\_\_ feet from West line



Sec. 12

T.	5	S.
R.	1	E.

Farm \_\_\_\_\_

Other description: MM 1933

No. \_\_\_\_\_

Company \_\_\_\_\_

Brewerton Coal Co

No. 22 Mine

County No. 140

Elevation 156.7 ft.

By W.B. Roe

Method: Level, transit, alidade, hand level

Plane table and alidade

Elevation of Curb + 2' higher

Height of point above ground 32"

Date 7-28-1932 Notebook 614 P. 15 (2113)

Looseleaf ref. \_\_\_\_\_

Map files No. \_\_\_\_\_

Description of item: (drill hole, mine, etc.) Air shaft - shipping mine

**SHIPPING MINE**

County Franklin  
(45576-1M-10-30)

Quadrangle Duquoin

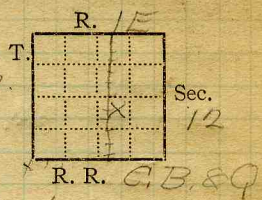
Index No. 0412.3d

**NEW**





Mine Name or No., #2  
1 mile N from Sasset  
Operator, 191 Southern Gem Coal Corp. 58.



Operator, 191

Entrance, Shaft Elev., 462.29 ft. (above, sea level)  
(below, sea level)  
Depth to bottom coal, 690 ft. Alt. -227.71'

SURFACE DATA.

- A. Topography, Rolling See
- B. Surficial materials. (1) Character, No information
- (2) Thickness, No information
- (3) Effect on mining and shaft-sinking, of former drainage lines, underground water strata, etc.

- C. Outcrops, (1) Character, See
- (2) Structure, See
- (3) Fossil horizons, See
- Collection No.,
- (4) Evidences of subsidence, See

D. Note collection of mine maps, drill records and shaft logs.  
For Elevation See F.J. Oberdion, C.E., West Frankfort, Ill.  
For Shaft log write H.M. Red, Sec. of Southern Gem Coal Corp., Christopher, Ill. See drill record sheet,

E. Notes on surrounding area, Ill.

See

Coal bed name: Local, Survey No. 6

Collector, Wilson ~~PERRY~~

Mine, Southern Gem #2 Co. Franklin Index No. 0412.54





## K. (5) Physical character of coal in benches,

(a) Relative hardness, *Brittle, easy to pick down.*(b) Lustre, *Dull at bottom to very bright at top.*(c) Fracture, *Conc. at top; cubical? in middle; rest blocky*(d) Texture, *For Clean See X 1*

## (6) Impurities in coal, other than bedded,

(a) Kind, *Few stringers of  $FeS_2$  in top coal*

(b) Position and persistence,

*Thruout top coal*(c) Rejected, *Ease of separation,**See*L. Floor: (1) Material, *Shaley material, floor clay*(2) Thickness, *Never have gone thru > 10'*

(3) Variation,

(4) Note character, condition, tendency to heave, relation to undercutting commercial value.

*Heaves when wet; Squeeze in W. side of mine result of robbing pillars.*

(5) Clay sample No.

Location,

*See**X 1*

## M. Stratigraphy,

(1) Fossiliferous horizons underground,

*The shale overlying the coal contains many plant fragments, tree trunks, etc.*

Collection No.

Location,

*The top coal also contains some imprints of tree trunks.*

N. Notes on effect of deep drilling in coal mine areas.

*See*Collector, *Wilson*Mine, *Southern Gem* Co. *Franklin*Coal: Survey No. *6* Index No. *0412154*



INDEX

(36713-500-7-20)

259693

K5 Cleat at Face of Main N is N50E,  
 Minor jointings are N25W  
 No regular cleat at face of Main S.  
 Cleat or "face" of coal throught mine  
 is very poorly defined.

1 This floor is much harder than the usual floor. It is harder and more shaley than ordinary fireclay although it has much the same appearance. It is characterized by many very small slips. Mine Mgr. reports that in grading 8-16' of this material has been encountered without reaching the bottom.

At face of 586 S. off 2nd E. S.W., the floor is a carbonaceous clay. Both this floor clay & the B.B., have a brownish shale 2-3" thick, contain many slickensides.

Collector Wilson

X- 1

EXTRA NO. 1

Index No.

0412.59

County

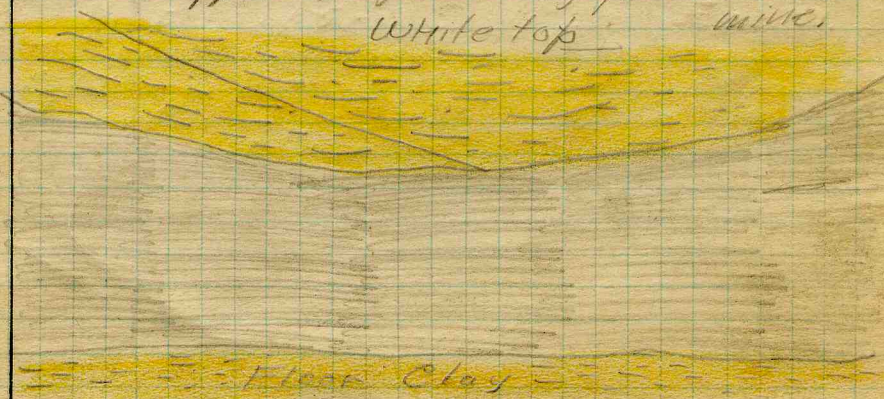
Franklin PERRY

INDEX

(36713-500-7-20)

G On account of this "white top", or soft shaley roof, which stacks upon being exposed to the air, it is necessary to leave from 1 to 2 or 3' of top coal. Falls in the roof are very few, on account of leaving this coal.

K3 Small fault or "roll" on Main S, 1000' from bottom. It is just in roof and does not get down in coal, although coal thins to 6'. Fault strikes N10° W and dips 25° to the E. This is apparently the only fault in the white top mine.



Collector Wilson

X- 2

Index No. 0912.54

County Franklin PERRY

EXTRA NO. 2



259693

INDEX

(36713-500-7-20)

K3 "Rolls" or "hills", small anticlines and synclines, the former apparently in the form of a dome, occur thruout the mine, being encountered in every direction. The largest of these "hills" is 42' in height and is 1200' from the point where the grade starts up to the top.

These "hills" introduce considerable trouble into mining since they necessitate much grading, and cause squeezes since much of the overhead weight is concentrated down into the base of the synclines.

A large "hill" at the bottom dips to the E  $10^\circ$ . It dips away in the other three directions but more gradually.

Collector *Wilson*

X- 3

EXTRA NO. 3

Index No. *0412.54*

County

*Franklin PERRY*

Aug 24

~~Old Ben~~  
Southern Gem #2 - Sesser

Main Shaft	668' to rail	} Elevation of r.r. here = 477 feet.
Air	686' " "	

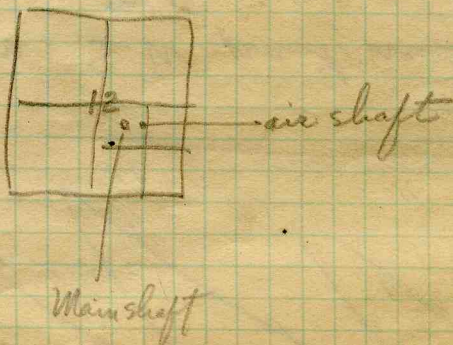
Get map with code { F. J. Oberding, Mine Eng  
Southern Gem Coal Corp.  
West Frankfort, Ill

668
477
<hr/> 191
686
477
<hr/> 209

John E. Jones - - Safety Engineer  
Old Ben Coal Corp

West Frankfort

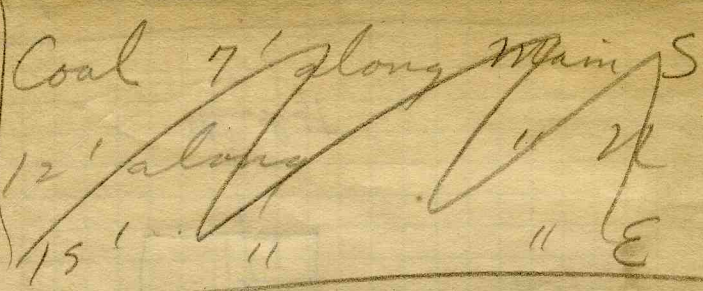
can give dope on drill hole  
4 miles NW of this mine



Franklin ~~PERRY~~ over

0412

Top  
(roof)  
= med  
gray  
shale.  
to 18' up.  
in shaft.



$7\frac{1}{2}'$  in SW part mine  
 $8\frac{1}{2}'$  in NE " "

12' in NW " "

15' in SE " "

10 thick coal runs  
 in NW SE band thru  
 shaft -  $12\frac{1}{2}'$  in air shaft

Blue band ~~up~~ with dirt &  
 black slate & mother coal 14"  
 thick in 3/4 W off main S  
 4" thick in NW part - elsewhere  
 < 4" down to 1/2". Thick band  
 38" above day — 2' N part of mine  
 24" above day. In SW part mine 14" above day





Operator, *Southern Gem Coal Corp* Date *June 9, 1921*  
 Mine, *No. 2* Sec. *12* T. *55* R. *1E*  
 Located,  $\frac{1}{2}$  miles from *Jesser N.*  
 Location in mine, *Main North*

GRAPHIC SECTION		DESCRIPTION OF SECTION (AT POINT SAMPLED)		
In.	No.	No.	(Note character and thickness of roof)	Inches
	1		<i>White grey shale roof</i>	
	2		<i>Coal (left for roof)</i>	<i>36 App.</i>
	3	<i>Coal</i>		<i>50</i>
	4	<i>Shale</i>		<i>3/8</i>
	5	<i>Coal</i>		<i>3 1/2</i>
	6	<i>B.B. shale</i>		<i>3</i>
	7	<i>Coal</i>		<i>27</i>
	8		<i>84" tape</i>	
	9			
	10			
	11			
	12			
	13			
	14			
			<i>Face wet</i>	
			(Note character and thickness of floor)	
			Total thickness of coal.	
		Condition, <i>As mined</i>	Time, hr. min.	
		Wt. Gross, <i>35-40 lbs.</i>	Net, lbs.	
		What Nos. shipped by Co.?		
		Excluded from sample: No.		
		Sample represents <i>5</i> in.	tons.	
		Impurities? How do they occur? <i>Bedded</i>		

Sample No. *176* Can No. *N-21-45* Lab. No. *12701*

Collector, *Netzeband* *PERRY* Coal: Survey No. *6*

Mine, *Southern Gem #2* Co. *Franklin* Index No. *041254*

R.—COAL SAMPLE SHEET.



Operator, *Southern Gem Coal Corp* Date *June 9, 1921*  
 Mine, *No. 2* Sec. *12 T. 55 R. 1E*  
 Located,  $\frac{1}{2}$  miles from *Sesser N.*  
 Location in mine, *Face Main South.*

GRAPHIC SECTION		DESCRIPTION OF SECTION (AT POINT SAMPLED)		
In.	No.	No.	(Note character and thickness of roof)	Inches
	1		<i>White-gray slate</i>	
			<i>Coal (left as roof)</i>	<i>24 App</i>
	2		<i>Coal</i>	<i>18</i>
	3		<i>Clay</i>	$\frac{1}{2}$
	4		<i>Coal</i>	<i>44</i>
	5		<i>BB clay</i>	<i>3</i>
	6		<i>Coal</i>	$3\frac{1}{2}$
	7		<i>Charcoal</i>	$\frac{1}{2}$
	8		<i>Coal</i>	<i>17</i>
	9			
	10			
	11			
	12			
	13			
			<i>36" tape</i>	
			(Note character and thickness of floor)	
			Total thickness of coal.	
		Condition, <i>As mined</i>	Time,	hr. min.
		Wt. Gross, <i>25 lbs.</i>	Net,	lbs.
		What Nos. shipped by Co.?		
		Excluded from sample: No. <i>3, 5, 7</i>		
		Sample represents <i>76</i>	in.	tons.
		Impurities? How do they occur? <i>Bedded</i>		

Sample No. *3* Can No. *N-21-46* Lab. No. *12702*

Collector, *Netzeband* ~~*PERRY*~~ Coal: Survey No. *6*

Mine, *Southern Gem #2* Co. *Franklin* Index No. *0412.54*

R.—COAL SAMPLE SHEET.



Operator, *Southern Gem Coal Camp* Date *June 9 1921*  
 Mine, *No. 2* Sec. *12* T. *55* R. *1E*  
 Located,  $\frac{1}{2}$  miles from *Jesser N.*  
 Location in mine, *3rd S off 4th W off Main S.*

GRAPHIC SECTION		DESCRIPTION OF SECTION (AT POINT SAMPLED)		
In.	No.	No.	(Note character and thickness of roof)	Inches
			<i>White-grey slate</i>	
	<i>1</i>		<i>Coal (left as roof)</i>	<i>30 fpp</i>
	<i>2</i>		<i>Coal</i>	<i>7 1/2</i>
	<i>3</i>		<i>Clay</i>	<i>12 3/4</i>
	<i>4</i>		<i>Coal</i>	<i>1 1/2</i>
	<i>5</i>		<i>Clay</i>	<i>1/2</i>
	<i>6</i>		<i>Coal</i>	<i>12</i>
	<i>7</i>		<i>Charcoal</i>	<i>1/4</i>
	<i>8</i>		<i>Coal</i>	<i>3 1/2</i>
	<i>9</i>		<i>Charcoal +</i>	<i>1/4</i>
	<i>10</i>		<i>Coal</i>	<i>7 1/2</i>
	<i>11</i>		<i>Coal and charcoal layers</i>	<i>3 1/2</i>
	<i>12</i>		<i>Coal</i>	<i>19 1/2</i>
	<i>13</i>		<i>Clay</i>	<i>1</i>
	<i>14</i>		<i>Coal</i>	<i>3</i>
	<i>15</i>		<i>BB. clay</i>	<i>6 1/2</i>
	<i>16</i>		<i>Coal</i>	<i>17</i>
<i>83' tape</i>				
(Note character and thickness of floor)				
Total thickness of coal.				
Condition, <i>As mined</i>		Time,	hr.	min.
Wt. Gross, <i>25</i> lbs.		Net,	lbs.	
What Nos. shipped by Co.?				
Excluded from sample: No. <i>3, 5, 13, 15</i>				
Sample represents <i>in.</i> <i>13, 15</i> tons.				
Impurities? How do they occur? <i>Bedded</i>				

Sample No. *9* Can No. *N-21-47* Lab. No. *12703*

Collector, *Netzeband* ~~*Perry*~~ Coal: Survey No. *6*  
 Mine, *Southern Gem #2* Co. *Franklin* Index No. *0412.54*  
 R.—COAL SAMPLE SHEET.



Operator, *Southern Gem Coal Corp* Date *June 10, 1921*  
 Mine, *No. 2* Sec. *12* T. *55* R. *1E.*  
 Located,  $\frac{1}{2}$  miles from *Sesser, N.*  
 Location in mine, *5<sup>th</sup> 46<sup>th</sup> N off 2<sup>nd</sup> E. NW*

GRAPHIC SECTION		DESCRIPTION OF SECTION (AT POINT SAMPLED)		
In.	No.	No.	(Note character and thickness of roof)	Inches
			Shale	
			Coal roof	30 app
	1		Coal	9
	2		Charcoal	$\frac{1}{4}$ "
	3		Coal	9
	4		Charcoal	$\frac{1}{2}$ "
	5		Coal	$7\frac{1}{2}$ "
	6		Charcoal	$\frac{1}{4}$ "
	7		Coal	$1\frac{1}{2}$ "
	8		Charcoal	$\frac{1}{4}$ "
	9		Coal	9
	10		Charcoal	$\frac{3}{4}$ "
	11		Coal	$26\frac{1}{2}$ "
	12		Char	$\frac{1}{4}$ "
	13		Coal	$2\frac{1}{2}$ "
	14		BB, grey-brown shale	$1\frac{3}{4}$ "
	15		Coal	31
			(Note character and thickness of floor)	
			Total thickness of coal.	99" tape

Condition, *As mined* Time, hr. min.  
 Wt. Gross, *30.35* lbs. Net, lbs.  
 What Nos. shipped by Co.?  
 Excluded from sample: No. *14*  
 Sample represents in. tons.  
 Impurities? How do they occur?

Sample No. *4* Can No. *N-21-48* Lab. No. *12720*  
 Collector, *Netzeband Perry* Coal: Survey No. *6*  
 Mine, *Southern Gem #2* Co. *Franklin* Index No. *0412:54*  
**R.—COAL SAMPLE SHEET.**



Operator, *Southern Gem Coal Corp* Date *June 10, 1921*  
 Mine, *No. 2* Sec. *12* T. *55 R. 1 E*  
 Located,  $\frac{1}{2}$  miles from *Sesser N.*  
 Location in mine, *Face of 1<sup>st</sup> F off N.W.*

GRAPHIC SECTION		DESCRIPTION OF SECTION (AT POINT SAMPLED)		
In.	No.	No.	(Note character and thickness of roof)	Inches
			<i>White-grey shale</i>	
	<i>1</i>		<i>Coal (left as roof 12" approx)</i>	
	<i>2</i>		<i>Coal</i>	<i>17</i>
	<i>3</i>		<i>Charcoal</i>	<i>13/4</i>
	<i>4</i>		<i>Coal</i>	<i>8</i>
	<i>5</i>		<i>Charcoal</i>	<i>1/4</i>
	<i>6</i>		<i>Coal</i>	<i>15</i>
	<i>7</i>		<i>Charcoal</i>	<i>1/4</i>
	<i>8</i>		<i>Coal</i>	<i>4 1/2</i>
	<i>9</i>		<i>Charcoal</i>	<i>3/4</i>
	<i>10</i>		<i>Coal</i>	<i>11 1/2</i>
	<i>11</i>		<i>Clay</i>	<i>3/8</i>
	<i>12</i>		<i>Coal</i>	<i>4 1/2</i>
	<i>13</i>		<i>Charcoal</i>	<i>1/2</i>
	<i>14</i>		<i>Coal</i>	<i>1</i>
	<i>15</i>		<i>BB, brown shale</i>	<i>1</i>
	<i>16</i>		<i>Coal</i>	<i>2 1/2</i>
	<i>17</i>		<i>Charcoal</i>	<i>1/4</i>
	<i>18</i>		<i>Coal</i>	<i>9 1/4</i>
	<i>19</i>		<i>Charcoal</i>	<i>1/4</i>
	<i>20</i>		<i>Coal</i>	<i>12</i>
			(Note character and thickness of floor)	
			Total thickness of coal. <i>87"</i>	
		Condition, <i>As mined</i>	Time, hr. min.	
		Wt. Gross, <i>25</i> lbs.	Net, lbs.	
		What Nos. shipped by Co.?		
		Excluded from sample: No. <i>15</i>		
		Sample represents	in.	tons.
		Impurities? How do they occur? <i>Bedded</i>		

Sample No. *2* Can No. *18-21-49* Lab. No. *12721*

Collector, *Netzaband PERRY* Coal: Survey No. *6*  
 Mine, *Southern Gem #2* Co. *Franklin* Index No. *0412.54*  
 R.—COAL SAMPLE SHEET.



Operator, *Southern Gem Coal Corp* Date *June 10, 1921*  
 Mine, *No. 2* Sec. *12 T. 55 R. 1E*  
 Located,  $\frac{1}{2}$  miles from *Sesser N.*  
 Location in mine, *Face of 5<sup>th</sup> S off 2<sup>nd</sup> E. SW*

GRAPHIC SECTION		DESCRIPTION OF SECTION (AT POINT SAMPLED)		
In.	No.	No.	(Note character and thickness of roof)	Inches
	1		White-grey shale roof	
	2		Coal (left as roof approx 2')	
	3		Coal	24
	4		Charcoal	$\frac{1}{2}$ "
	5		Coal	10 $\frac{1}{2}$
	6		Charcoal	$\frac{1}{8}$
	7		Coal	50
	8		Charcoal	$\frac{1}{4}$
	9		Coal	12
	10			
	11			
	12			
	13			
	14			
	15			
			98" tape	
			BB lenses out.	
			(Note character and thickness of floor)	
			Total thickness of coal.	
		Condition, <i>As mined</i>	Time, hr. min.	
		Wt. Gross, <i>30 lbs.</i>	Net, lbs.	
		What Nos. shipped by Co.?		
		Excluded from sample: No. <i>None</i>		
		Sample represents	in. tons.	
		Impurities? How do they occur?	<i>Bedded</i>	

Sample No. *3* Can No. *N-21-50* Lab. No. *12722*  
 Collector, *Netzaband* *PERRY* Coaf. Survey No. *6*  
 Mine, *Southern Gem #2* Co. *Franklin* Index No. *0412:54*  
 R.—COAL SAMPLE SHEET.



Operator, Interstate Coal Co.

Date Thurs, Nov. 16, 1933

Mine, Sesser Mine No. 22

Sec. 7 T. 55 R. 2E

Location in mine, Face of 12th S off 3rd EK off Main North  
960' from N line, 500' from W line, sec 7

GRAPHIC SECTION		DESCRIPTION OF SECTION (AT POINT SAMPLED)		
In.	No.	No.	(Note character and thickness of roof)	Inches
			Roof: roof coal left up	81
	1		Coal	3 $\frac{3}{32}$
	2		Fusain	$\frac{3}{32}$
	3		Coal	2 $\frac{13}{32}$
	4		Fusain	$\frac{1}{16}$
	5		Coal	5 $\frac{3}{16}$
	6		Fusain	$\frac{3}{32}$
	7		Boney coal	$\frac{7}{32}$
	8		Coal	7 $\frac{3}{4}$
	9		Vitrain	$\frac{7}{32}$
	10		Coal	14 $\frac{13}{32}$
	11		Vitrain	$\frac{3}{8}$
	12		Boney coal	$\frac{1}{4}$
	13		Clarain	$\frac{7}{16}$
	14		Coal - heterogeneous bands	$\frac{1}{4}$
	15		Durain	$\frac{7}{32}$
	16		Coal	21 $\frac{13}{32}$
	17		Blue band	1 $\frac{5}{32}$
	18		Coal	22 $\frac{9}{16}$
			Underclay, dark gray 1'-2'	
			(Note character and thickness of floor)	
			Total thickness of coal.	80 $\frac{13}{16}$

Condition, Dry Time, 0 hr. 30 min.

Wt. Gross, 60 lbs. Net, lbs.

What Nos. shipped by ~~me~~? 1-16, 18

Excluded from sample: No. 17

Sample represents  $79\frac{21}{32}$  in. tons.

Impurities? How do they occur? No sulfur bands

(1 division=3 in.) present. Two thin, persistent, hard bands boney coal

Vitrain-441-441; Clarain-442; Fusain-411-441  
Sample No. 1105 Face Can No. IV

Lab. No.

Collector, W.C. McCabe & E.T. Benson

Coal: Survey No. 6

Mine, Sesser # 22 Co. Franklin

Index No. 0412

R.—COAL SAMPLE SHEET. PERRY



Operator, *Interstate Coal Company* Date *Thurs, Nov. 16, 1932*  
 Mine, *Sesser No. 22* Sec. *12* T. *55* R. *1E*  
 Location in mine, *Rib at 1st N off 8th W off Main North*  
*170' from N line, 2950' from W line, sec 12, T55, R1E*

GRAPHIC SECTION		DESCRIPTION OF SECTION (AT POINT SAMPLED)	
In.	No.	No.	(Note character and thickness of roof) Inches
		<i>Roof: roof coal - 22"</i>	
		<i>1</i>	<i>Coal 3/16</i>
		<i>2</i>	<i>Fusain 7/32</i>
		<i>3</i>	<i>Coal 19/32</i>
		<i>4</i>	<i>Fusain 1/8</i>
		<i>5</i>	<i>Coal 29/32</i>
		<i>6</i>	<i>Boney coal 11/32</i>
		<i>7</i>	<i>Coal 17/32</i>
		<i>8</i>	<i>Fusain 5/32</i>
		<i>9</i>	<i>Coal 13 1/8</i>
		<i>10</i>	<i>Durain 3/4</i>
		<i>11</i>	<i>Coal 4 31/32</i>
		<i>12</i>	<i>Fusain 1 1/16</i>
		<i>13</i>	<i>Coal 29 27/32</i>
		<i>14</i>	<i>Blue band 2 3/32</i>
		<i>15</i>	<i>Coal 10 27/32</i>
		<i>16</i>	<i>Boney coal 5 5/16</i>
		<i>17</i>	<i>Coal 8 1/8</i>
		<i>Underclay; dark grey - 10"</i>	
		<i>(Note character and thickness of floor)</i>	
		<i>Total thickness of coal. 82</i>	

Condition, *Dry* Time, *30* hr. *30* min.  
 Wt. Gross, *60* lbs. Net, lbs.  
 What Nos. shipped by ~~1-13~~ *1-13, 15-17*

Excluded from sample: No. *14*  
 Sample represents *79 29/32* in. tons.  
 Impurities? How do they occur? *Thin, persistent, hard*  
*boney coal band. No sulfur bands.*

(1 division=3 in.)

*No band samples*  
 Sample No. *IGS* Can No. *V* Lab. No.  
 Collector, *L.C. McCabe & E.T. Benson* Coal: Survey No. *6*  
 Mine, *Sesser No. 22* Co. *Franklin* Index No. *6412*  
 R.—COAL SAMPLE SHEET. *FERRY* (12759-1000-2-29)





Operator, Interstate Coal Co.

Date Thurs., Nov. 16, 1933

Mine, Sesser Mine No. 22

Sec. 12 T. 55 R. 1E

Location in mine, Face of 6th W off Main North

320' from E line, 1960' from N line, sec 11, T55, R1E

GRAPHIC SECTION		DESCRIPTION OF SECTION (AT POINT SAMPLED)	
In.	No.	No.	Inches
		Roof: Roof coal left up - 15"	
		1 Coal	9 $\frac{31}{32}$
		2 Peacock coal	1 $\frac{31}{32}$
		3 Coal	10 $\frac{7}{16}$
		4 Fusain, partly pyritized	$\frac{11}{32}$
		5 Coal	2 $\frac{1}{2}$
		6 Sulphur band	$\frac{5}{16}$
		7 Coal	13 $\frac{15}{16}$
		8 Fusain, soft	$\frac{9}{16}$
		9 Coal	5
		10 Fusain	$\frac{1}{4}$
		11 Coal	1 $\frac{11}{16}$
		12 Fusain	$\frac{5}{32}$
		13 Coal	3 $\frac{7}{16}$
		14 Fusain	$\frac{7}{8}$
		15 Coal	23 $\frac{25}{32}$
		Blue band, gray to blue gray, soft, checky - 14"	
		Coal below blue band approximately 36"	
		(Note character and thickness of floor)	
		Total thickness of coal. 73 $\frac{27}{32}$	
		Condition, Dry	Time, 0 hr. 30 min.
		Wt. Gross, 60 lbs.	Net, lbs.
		What Nos. shipped <del>2-8</del> ? 1-3, 5, 7-15	
		Ground in Lab.	
		Excluded from sample: No. 4, 6	
		Sample represents 73 $\frac{3}{16}$ in. tons.	
		Impurities? How do they occur? Fusain band partly pyritized. Thin, persistent band of stony pyrite.	

(1 division=3 in.)

No band samples  
3 Sample No. IGS

Can No. I

Lab. No.

Collector, H. C. McCabe &amp; E. T. Benson

Coal: Survey No. 6

Mine, Sesser Mine No. 22 Co. Franklin

Index No. 0412

R.—COAL SAMPLE SHEET. PERRY

(12759-1000-2-29) 7



Operator, Interstate Coal Co

Date Friday, Nov. 17, 1933

Mine, Sesser No. 22

Sec. 12 T. 55 R. 1E

Location in mine, Face of 7th N off 5th ES

400' from E line, 700' from S line, sec 12, T55, R1E

GRAPHIC SECTION		DESCRIPTION OF SECTION (AT POINT SAMPLED)		
In.	No.	No.	(Note character and thickness of roof)	Inches
			Roof: Top coal - estimated 24'	
		1	Coal	7 $\frac{1}{32}$
		2	Fusain	$\frac{1}{8}$
		3	Coal	4 $\frac{3}{32}$
		4	Fusain, mineralized with pyrite	$\frac{7}{32}$
		5	Coal	9 $\frac{13}{32}$
		6	Fusain	$\frac{1}{16}$
		7	Coal	1 $\frac{1}{2}$
		8	Fusain	$\frac{7}{32}$
		9	Coal	$\frac{13}{32}$
		10	Fusain	$\frac{1}{4}$
		11	Coal	$\frac{9}{16}$
		12	Fusain	$\frac{1}{8}$
		13	Coal	$\frac{27}{32}$
		14	Durain	$\frac{3}{8}$
		15	Coal	1 $\frac{27}{32}$
		16	Vitrain	$\frac{5}{16}$
		17	Durain	$\frac{5}{32}$
		18	Vitrain	$\frac{15}{32}$
		19	Coal	3
			(Over) (Note character and thickness of floor)	
			Total thickness of coal.	
		Condition, Dry Time, 0 hr. 30 min.		
		Wt. Gross, 60 lbs. Net, lbs.		
		What Nos. shipped <del>1-3, 5-31, 33-34, 36, 38-63</del> 1-3, 5-31, 33-34, 36, 38-63		
		Excluded from sample: No. 4, 32, 35, 37		
		Sample represents $86 \frac{29}{32}$ in. tons.		
		Impurities? How do they occur? Fusain bands mineralized with pyrite; hard pyrite band; clay blue band		

(1 division=3 in.)

Band samples V.-447, 1003, 1004; F.-440, 1000 CI.-1002  
 Sample No. 4 Can No. IGS No. II Lab. No.

Collector, L.C. McCabe & E.T. Benson Coal: Survey No. 6  
 Mine, Sesser No. 22 Co. Franklin Index No. 0412

20	Fusain		$\frac{1}{16}$	54	Coal	1	$\frac{1}{16}$
21	Coal	1	$\frac{1}{16}$	55	Clarain		$\frac{5}{32}$
22	Fusain		$\frac{1}{16}$	56	Vitrain		$\frac{1}{16}$
23	Vitrain		$\frac{3}{32}$	57	Clarain		$\frac{9}{32}$
24	Fusain		$\frac{3}{8}$	58	Vitrain		$\frac{17}{32}$
25	Clarain		$\frac{7}{32}$	59	Clarain		$\frac{27}{32}$
26	Vitrain		$\frac{1}{4}$	60	Vitrain		$\frac{1}{4}$
27	Clarain		$\frac{13}{32}$	61	Coal	5	$\frac{25}{32}$
28	Fusain		$\frac{3}{32}$	62	Vitrain		$\frac{3}{8}$
29	Coal	4	$\frac{1}{4}$	63	Coal	10	$\frac{13}{16}$
30	Boney coal		$\frac{5}{8}$				
31	Coal	2	$\frac{23}{32}$				
32	Fusain, partly mineralized		$\frac{21}{32}$				
33	Vitrain		$\frac{11}{32}$				
34	Coal	2	$\frac{13}{16}$				
35	Blue band	2	$\frac{1}{4}$				
36	Coal	7	$\frac{13}{16}$				
37	Pyrite band		$\frac{1}{8}$				
38	Coal	2	$\frac{21}{32}$				
39	Vitrain		$\frac{1}{3}$				
40	Clarain		$\frac{3}{32}$				
41	Vitrain		$\frac{5}{32}$				
42	Clarain		$\frac{32}{5}$				
43	Vitrain		$\frac{7}{8}$				
44	Clarain		$\frac{7}{32}$				
45	Vitrain		$\frac{21}{32}$				
46	Clarain		$\frac{3}{16}$				
47	Vitrain		$\frac{7}{8}$				
48	Durain		$\frac{3}{8}$				
49	Vitrain		$\frac{23}{32}$				
50	Clarain		$\frac{3}{16}$				
51	Vitrain		$\frac{1}{4}$				
52	Coal	1	$\frac{11}{32}$				
53	Vitrain		$\frac{1}{16}$				
			$\frac{3}{16}$				

Total coals sampled  $86 \frac{29}{32}$ "  
Tape measurement 87"

Floor: 6" of bottom coal for entry

Underclay beneath coal thin and  
Very irregular

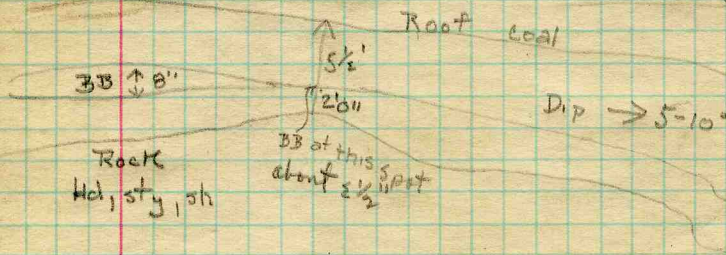


Sample No 1 - Sesser - Face Sample - Can No IV  
 12 S off 3rd E.N. 3/4 N or 2/4 E of shaft  
 Height of coal is 8 3/16 in sample - Top coal = 21"

Sample Band Samples  
 Fusain - Can No. 441 + (411)  
 Utramin - Can No. (449) + 421  
 Chalcain - Can No. (442)  
 500' from W line 960' from N line  
 sec 7, T53, R2E

Face of 8th W off 17th N - Sample (Wooden Can) #9  
 Blocks of coal collected by Thiessen  
 Coal highly distorted and marked

Sketch of N rib of entry 200' from N line }  
 1080' from W line }  
 sec 12, T53, R4E



at face which is facing west the dip is distinctly South so dip is to S/E entirely

Three pictures taken

- N rib - picture of thick blue-banded
- at face - picture of dipping coal to S
- N rib - pictures of rocks beneath coal - the top of rubble at top of coal.

coal very bright and brittle. Decidedly slickensided character in both coal and shale or clay.

Collector: F. T. Benson

Nov. 15, 1933

Coal No. 6

Sheet 1

~~PERRY~~

Interstate Coal Co. - Sesser

Franklin County

0412.4d



Sample

No. 2

at point where 1st N off 8th W off main North will be termed - 600' SW of Main N  
This entry is in old part of mine - entry down about 3 yrs ago.

Mr. Butcher wanted sample ~~sample~~ taken in this area as he is trying to get 900 acres of coal from this area.

Can No. 5 - Lead Can

Height of coal section sampled = 82"

170' from N line, 2050' from W line

see 17, TSS, TRAE

Sample

No. 3

Face of 6th W off the main N

Can No. 1 - 320' from E line, sec 11  
1900' from N line, TSS, TRAE

Face sample of coal above clay parting clay parting apparently in thick blue band

Blueband in this area is very thick at thickness at this place about 14" apparently tight in position of blue band, with definite thick band of coal beneath.

Gradual increase in thickness from east Do not know how thick the coal gets where blueband gets out in Coello mine reached 3' or better apparently in position of blueband

Collector: E T Benson

November 15, 1933

Coal No. 6

Sheet 2

~~FERRY~~

Interstate Coal Co - Sesser

Franklin County

0412.4d



Sampled by Thuesen - can of blocks cut  
down from face

Crosscut between main lth W and back  
lth W 200' back from face

Sample for Thuesen of coal below  
blueband

Total thickness of coal ~~39"~~ 27½"

Thickness of blueband above coal = 13"

2050' from N line, 120' from E line  
sec 11, T55, R21E

Collector: F. T. Benson

January 15, 1933

Coal No. 6

Sheet 3

~~BERRY~~

Interstate Coal Co. - Sesser

Franklin County

0412.4d



Sample No. 4 - Face Sample No. 4  
 Face of 7th N off 5th ES  
 400' from E line of 2c 12, 700' from S line

Can No. 2 - Face Sample

Vetrain - Can No. (447) 1003  
 Can for Fisher (marked Fisher) 1001  
 Fusam - Can No. (440) 1000  
 Clarain (1002)

Total section sampled is 87" by tape  
 Mitchell estimated 24" top coal here  
 about 6" of coal left at bottom not sampled

(note in office - total measurements by tape = 86<sup>24</sup> 32)