

FIELD NOTES

Illinois State Geological Survey

See maps nos. 4107 c3.5-7, d5.1-189, d5.1-190, d5.1-191
c3.5-8

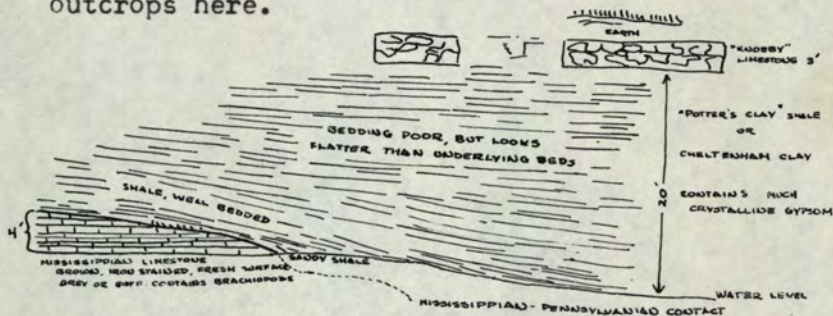
(0223.4a)

October 28, 1927

Road corner. Foot traverse N and E. 400' N. of road corner (0223.4b) Outcrop 6' clay shale overlain by 3' limestone - the "Pottsville Knobby". Elevation of contact is 35' above valley flat. $480' + 35' = 515'$. Add 10' for interval to top of No. 2 coal; $515' + 10' = 525'$.

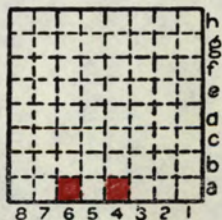
(0223.6a)

Small creek, Mississippian-Pennsylvanian contact. According to information from miner, J.E. Beckman, Exeter, there was $1/8$ to $1/4$ acre of a lower coal close to the contact, strip-mined in this creek, reported to be from 18" to as much as 4". Hard and bright. No "roof". Some coal still outcrops here.



(continued on next page)

By A.H. Bell Date 1927
Quadrangle Griggsville
County Scott Sec. 23 T. 15N R. 13W



FIELD NOTES
Illinois State Geological Survey

(0223.56a and 0226.5h)

1935?

Old strip pit in thin coal.

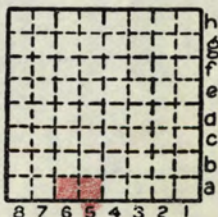
Section exposed in bluff on E. side of branch are:

Limestone, gray, dense, very fossiliferous, massive, hard	3'
Clay, white to gray to dark gray at base, soft to firm, none shows bedding	7'
Coaly streak	2"
Clay, dark gray, coaly, hard, fractures conchoidally	1'
Clay, gray to light gray, soft to firm, slightly sandy and bedded toward base	8'
Limestone, gray to brown, massive, thick-bedded, fossiliferous - Mississippian	0

In strip pit coal is very shaly and dirty 12-18" thick.

Overlain by clay, gray to light gray, soft, plastic	2'
Coal	12-18"
Shale, black, sandy, coaly, hard, slabby	4"
Underlain at W. end by Mississippian which underlies clay over coal.	

This apparently is small depression in surface of Mississippian in which this coal with underlying black shale has been deposited. Exposed in branch which cuts through pocket. Bounded on E. and W. by massive Mississippian limestone.



By E.T. Benson Date 1935?

Quadrangle Griggsville

County Scott Sec. 23 T. 15N R. 13W