

Illinois State Geological Survey

p. 2.

.7h

.6fg

(0120.28 1/2 - .21/27) cont.

H.R.W.

Ls. med. to dk. gray very sandy and micac. calc. ss. with a few rounded pebbles to 1-2" dia. of blk. phosphatic (?) ls. slightly but not abundantly foss. 10" myalina most abundant.

Shaly blk. to dk. gray evenly bedded slightly calc. slightly foss. a few Aviculopecten seen 1'6" seen

Covered 2' est.

Sh. med. bluish gray soft with abundant lt.

Chonetes mesolobus 1'6" seen to bridge

See road cut section 0120.26 (20-15N-12W-67f).

(0120.7e) E.T.B.

See map no. 0120.25-26-27-1

1935?

Small section exposed in N. bank of Mauvaise Terre Creek

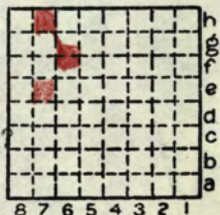
Shale, gray, thin-bedded, ironstone concretions, base not exposed

Shale, black, thin-bedded, sheety, pimply 4' 0"

Coal 27 1/2"

Underclay, gray, soft with gray, nodular limestone at base 6'

Old opening on coal slope abandoned - coal not exposed. Drift very thick in this hill - with some gravel in which pits have been opened near top of hill. Whole thickness of Pleistocene = 80'±



By H.R.Wanless, E.T.Benson Date 1930, 1935

Quadrangle Winchester

County Scott Sec. 20 T. 15N R. 12W