

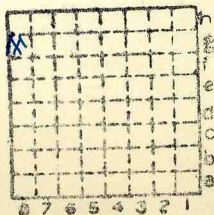


Form 180

Naylor Mine

180

mine index 2901



Sec.	24		
T.	7	N.	S.
R.	8	E.	W.
Index No.			



Mine originally operated by: (1)

*Naylor mine
Bunker Hill*

Date

1867±

Original name or number:

Illinois Coal Report

p.

LATER OPERATORS

Date	Operator	Name or No.
2		
3		
4		
5		
6		
7		
8		
9		
10		
11		
12		
13		
14		

* Also owners

#See ownership sheet

Railroad, Wagon, ~~Idle~~ Abandoned - 1879 *sheet*

LOCAL MINE

IDENTIFICATION

County No.

182

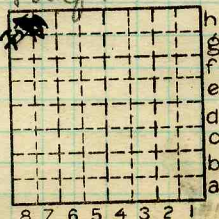
Coal No. *6*

Quad.

200 (Gillespie) Part 9.

County

Macoupin.



Sec. *24*

T. *7* N.

R. *8* W.

Index No.

2224.

COAL MINE OPERATOR



LOCATION AND ELEVATION

Location: *P.S.M.* side R. R.
 Map *9-59-21* side R. R.
 side Highway No.

✓ on top. map Location sheet ✓

Elevation: Method, 1. Est. () _____ ft.
 2. Inst. (kind *Alidade*) *619.6* ft.

By *P.B. McClure, NB 591, p. 59* Data sheet

DEPTH

Authority *Mine notes* To coal *247* ft.
 Authority Rail to rail _____ ft.
 Top of coal above rail. (Est. Rule) _____ ft.
 To coal _____ ft.

ALTITUDE OF TOP OF COAL

By estimated data _____
 By instrumental data *373* ft.

Thickness

Max. in. Min. in. Aver. *72* in.

GEOLOGICAL DATA

Mine notes, date *None* _____

Coop No. _____ Pyr. inv. _____ Coal Ash inv. _____

CHEMICAL DATA

Analyses Face	U. I.	B. M.	Others
Car	U. I.	B. M.	Others
Org. Sulf	U. I.	B. M.	Others
Ash fusion	U. I.	B. M.	Others
Ash anal.	U. I.	B. M.	Others
	U. I.	B. M.	Others

Classification

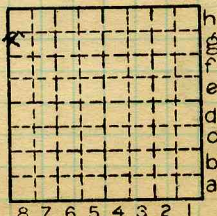
Misc. tests: Coking. Cleaning Boiler

Published descriptions:—

~~Railroad~~, Wagon, ~~mine~~, Abandoned *1879*

IDENTIFICATION

County No. *182* Coal No. *6*
 Part *9*
 Quad. *Gillespie (200)*
 County *Macoupin*



Sec. *24*

T. *7* N.

R. *8* W.

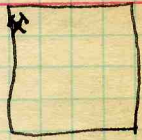
Index No.

2224.8g

COAL MINE LOCATION AND DATA



Naylor Mine



1929 Abd. Wagon Mine

Sur. Elev- 619.6

P.S.M.

: To coal 247

Alt. coal 373

Thk. 6'

G. Coal Rept #182