



Form 180

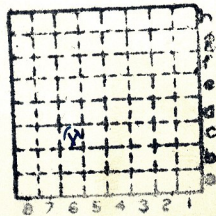
Also
CROWN #1 Sec 2. 1N 9 W B2. from old map

R -F

Crown Mine #1

1230

Mine Index 3543



Sec. 2.

T.	1	N.	S.
R.	9	E.	W.
Index No.			



CROWN MINE No 1 - about 300' N. 100' E cent. SW 1/4 Sec 2

CROWN MINE No 2 63 1/2 S 27 1/2 E NE cor SE 1/4 sec 2

Mine is in Sec. 1 Co. No. 841

From map in Court House at Belleville. In Book

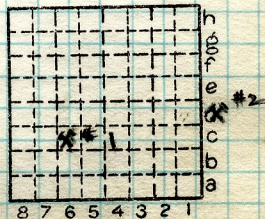
GHC

Date Nov. 9 1937 T. 1 N. R. 9 W.

Quad. 12.5d Part

County St. Clair Index No. 0602 C 6

0601 D 8





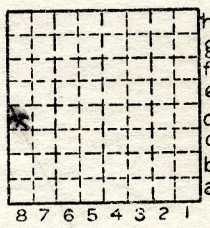
Location and Elevation Data

Location: Exact Approximate
 (Approximate only if no trace of record of original exists)
 Location by..... G. H. C......
 Date..... Nov. 9, 1937..... Notebook No..... Page.....
 Looseleaf ref. Mine Notes.....
 Map files No.....

Description of Location

Position in sec., 1/4 sec., 40 acres

..... feet from North line
 feet from East line
 feet from South line
 feet from West line



Sec. 1
 T 1 N.
 R 9 E.
 W.

Other description:.....

Farm.....
 No.....
 Company Crown Mine

No. 2
 County No. 841

Elevation..... 590.0..... ft.

By..... J. N. P.

Method: Level, transit, alidade, hand level

T.M.

Elevation of.....

Height of point above ground.....

Date..... Notebook..... P.....

Looseleaf ref.....

Map files No.....

Description of item: (drill hole, mine, etc.).....

County St. Clair Quadrangle 225 D Index No. 0602

0601DB