

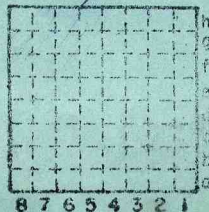
: Abandoned
June 1962

SW $\frac{1}{4}$ SW $\frac{1}{4}$

See Sec 26

Black Dot Coal Co., # 3 ?

L-115



h Sec. 13

T. 9 # S.

R. 6 # E.

Index No.

3PM

Saline



Mine originally operated by: (1)

Date Egyptian Coal & Coke Co.

1905

Original name or number: #2
Illinois Coal Report 1905 p.

LATER OPERATORS

Date	Operator	Name or No.
2 1906	O'Gara Coal Co.	#3
3 1933	Sahara Coal Co.	#3
4		
5		
6		
7		
8		
9		
10		
11		
12		
13		
14		



Index 608

* Also owners #See ownership sheet

Railroad, Wagon, Idle, Abandoned Shaft

C.C.C. & St. L. '38

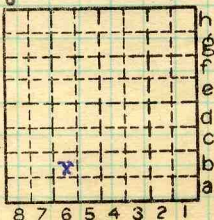
IDENTIFICATION

County No. 577 Coal No. 5



Quad. Harrissburg Part

County Saline



Sec. 15

T. 9 S.

R. 6 E.

Index No.

0815 b6

COAL MINE OPERATOR



(Sheets) COAL PRODUCTION (Sheet)

No.	Period						Tons	
	Mo.	Day	Year	Mo.	Day	Year		
8	1	1	1936	12	31	1935	282	225
8	1	1	1937	12	31	1937	36	128

#5

7,966,475
 6066555
 1899920

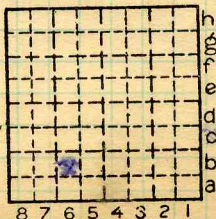


SUMMARIES

No.	to	No.		
1905		1935	7684	250
			7966	475

Railroad, Wagon, Idle, Abandoned IDENTIFICATION

County No. 577 Coal No. 5
 Harrisburg
 Quad. Part
 County Saline



Sec. 15
 T. 9 S.
 R. 6 W.
 Index No. 0815 b6

COAL MINE—PRODUCTION



John C. Moore Corporation, Rochester, N. Y. Binder and holes in leaves, each Patented 1906.
(30031-300-6-25)

Mine Name or No. 3 Mine Address Harrisburg

Operator O Gara Coal Co

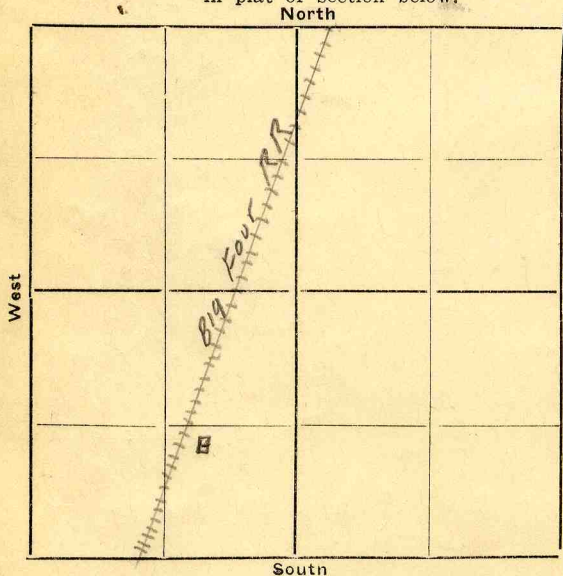
Main Office Address Mc Cormic Building
Chicago

Location of Mine:

Township Name Harrisburg County _____

Section No. 15 Township 9 S Range 6 E W

Indicate location of mine and position of R. R. in plat of section below.



Kindly state number of feet from quarter section lines:

1300 from N. line

1100 from E. line

1200 from S. line

1450 from W. line

Idle entire year 19____ Yes
No

Abandoned (date) 19____

Surface landing is 364 feet above sea level or about _____ feet (above)

(below) railroad station at _____ (nearest town).

Depth to top of coal is 230 feet.

Average thickness of coal is 5 feet 8 inches.

Do not fill in below this line.

Coal Bed Name _____ Survey No. 5

County Saline Index No. _____

Operator, O'Gara Coal Co

Date Aug 26, 1931

Mine, No 3

Sec. 15 T. 9 S R. 6 E

Location in mine,

21st Room off 7th West off 7th North Fault off Main ^{OVER}

GRAPHIC SECTION

DESCRIPTION OF SECTION (AT POINT SAMPLED)

In. No.

No. (Note character and thickness of roof)

Inches



Hard shale roof.

Draw slate 7" thick
Sample in Box

Top of Coal 66"



5

4

(5) Pyrite lamina

(4) Charcoal 1/4"

(3) Charcoal Parting 1/4"

(2) Charcoal and Pyrite 1/4 to 1/2"

(1) Coal missing in Column
because of Under-cut

3

(Note character and thickness of floor)

2

Total thickness of coal

Condition, Time, hr. min.

Wt. Gross, lbs. Net, lbs.

What Nos. shipped by Co.?

Excluded from sample: No.

Sample represents in. tons.

Impurities? How do they occur?

Fire Clay

(1 division = 3 in.)

Sample No. 32

Can No. 32

Lab. No.

Collector, H. Nicholson

Coal: Survey No.

Mine, O'Gara No 3

Co. Saline

Index No. 6

4306 North and 2600' East of shaft

Collector: *[Faint handwritten name]* Date: *[Faint handwritten date]*

Section No: *25* Core No: *25* Trip No: *[Faint]*

Interval (ft)	Description
0 - 1	[Faint description]
1 - 2	[Faint description]
2 - 3	[Faint description]
3 - 4	[Faint description]
4 - 5	[Faint description]
5 - 6	[Faint description]
6 - 7	[Faint description]
7 - 8	[Faint description]
8 - 9	[Faint description]
9 - 10	[Faint description]
10 - 11	[Faint description]
11 - 12	[Faint description]
12 - 13	[Faint description]
13 - 14	[Faint description]
14 - 15	[Faint description]
15 - 16	[Faint description]

GRAB SAMPLES SECTION: [Faint] DESCRIPTION OF SECTION (SEE LOCAL SAMPLES): [Faint]

Location of site: [Faint] Date: [Faint]

Operator, *O'Gara Coal Co*

Date *Aug 27, 1931*

Mine,

Sec. *15* T. *9S* R. *6E*

Location in mine,

11th Room, off 1st West, off 15th South off Main East - over

GRAPHIC SECTION		DESCRIPTION OF SECTION (AT POINT SAMPLED)	
In.	No.	No.	Inches
		<i>Hard shale roof, medium dark</i>	
		<i>draw slate 4"</i>	
		<i>Top of Coal</i>	
6	(5)		
	(4)		
5			
	(3)	(5) <i>Charcoal and Pyrite, 1/4"</i>	
		(4) <i>Bone and Pyrite 1/2 to 3/4"</i>	
	(2)		
		(3) <i>Charcoal Parting 1/8"</i>	
		(2) <i>Charcoal Parting 1/4"</i>	
3			
		<i>(1) Coal in Column missing due to undercutting</i>	
2			
		(Note character and thickness of floor)	
		Total thickness of coal	
1		Condition,	Time, hr. min.
		Wt. Gross, lbs.	Net, lbs.
		What Nos. shipped by Co.?	
		Excluded from sample: No.	
		Sample represents	in. tons.
		Impurities? How do they occur?	

Fire Clay

(1 division = 3 in.)

Sample No. *33*

Can No. *33*

Lab. No.

Collector, *H. Macdonald*

Coal: Survey No. 6

Mine, *O'Gara #3*

Co. *Saline*

Index No.

3700' East and 1300' South of shaft

Collector: *[Faint]* Index No: *[Faint]*
Sample No: 32 Core No: 32 Date: *[Faint]*

Sample No	Description
32	<i>[Faint description]</i>
33	<i>[Faint description]</i>
34	<i>[Faint description]</i>
35	<i>[Faint description]</i>
36	<i>[Faint description]</i>
37	<i>[Faint description]</i>
38	<i>[Faint description]</i>
39	<i>[Faint description]</i>
40	<i>[Faint description]</i>
41	<i>[Faint description]</i>
42	<i>[Faint description]</i>
43	<i>[Faint description]</i>
44	<i>[Faint description]</i>
45	<i>[Faint description]</i>
46	<i>[Faint description]</i>
47	<i>[Faint description]</i>
48	<i>[Faint description]</i>
49	<i>[Faint description]</i>
50	<i>[Faint description]</i>
51	<i>[Faint description]</i>
52	<i>[Faint description]</i>
53	<i>[Faint description]</i>
54	<i>[Faint description]</i>
55	<i>[Faint description]</i>
56	<i>[Faint description]</i>
57	<i>[Faint description]</i>
58	<i>[Faint description]</i>
59	<i>[Faint description]</i>
60	<i>[Faint description]</i>
61	<i>[Faint description]</i>
62	<i>[Faint description]</i>
63	<i>[Faint description]</i>
64	<i>[Faint description]</i>
65	<i>[Faint description]</i>
66	<i>[Faint description]</i>
67	<i>[Faint description]</i>
68	<i>[Faint description]</i>
69	<i>[Faint description]</i>
70	<i>[Faint description]</i>
71	<i>[Faint description]</i>
72	<i>[Faint description]</i>
73	<i>[Faint description]</i>
74	<i>[Faint description]</i>
75	<i>[Faint description]</i>
76	<i>[Faint description]</i>
77	<i>[Faint description]</i>
78	<i>[Faint description]</i>
79	<i>[Faint description]</i>
80	<i>[Faint description]</i>
81	<i>[Faint description]</i>
82	<i>[Faint description]</i>
83	<i>[Faint description]</i>
84	<i>[Faint description]</i>
85	<i>[Faint description]</i>
86	<i>[Faint description]</i>
87	<i>[Faint description]</i>
88	<i>[Faint description]</i>
89	<i>[Faint description]</i>
90	<i>[Faint description]</i>
91	<i>[Faint description]</i>
92	<i>[Faint description]</i>
93	<i>[Faint description]</i>
94	<i>[Faint description]</i>
95	<i>[Faint description]</i>
96	<i>[Faint description]</i>
97	<i>[Faint description]</i>
98	<i>[Faint description]</i>
99	<i>[Faint description]</i>
100	<i>[Faint description]</i>

Location: *[Faint]*
 Date: *[Faint]*
 Name: *[Faint]*
 Other: *[Faint]*

Town, **Harrisburg**

Local Authority,

Surface alt., **369** ft.

Depth to coal, **233 4"** ft.

Alt. top coal, **136** ft.

Level: Auth., **Deuchler NB97-p38**

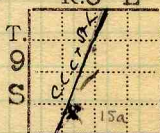
Thickness: Av. in.

Max. in., Min. in.

Method, **H.L.**

R. R., ~~Big 4~~ **C.C.C. + St. L.**

1200' from Shum
1620' from W
Twp. **Harrisburg**
R. 6 E



Sec. **15**

Location: authority, **Deuchler; O'Gara map**

(Show R. R.)

Dike:

Operator

Mine Name or No.

1904 Egyptian Coal Co. Chicago #2
1906 O'Gara Coal Co. Chicago
322 S. Michigan Ave, Chicago.

No. 3

Successor to

Date

Succeeded by

Date

Succeeded by

Date

PRODUCTION.

Q

				Fiscal			U. S. No.
				Idle			
1915							
1927	81	595					
1928							
1931	343	048					1930 #12
1932	283	331					

Geol. Notes? **Yes**

Coop. No.

Coal secs.? **1**

Analyses No. **1112**

12
13 COUNTY

Examined by **Wheeler;**

Ref.

Coal bed name: Local

Survey No. **5**

County **Saline** on

Index No. **0815a**

K.—ACTIVE SHIPPING OR LOCAL COAL MINE.

0815.31



LOCATION AND ELEVATION

Location: side side R. R. side R. R. side Highway No.

on top. map Location sheet

Elevation: Method, 1. Est. () ft. 369

By Deuchler NB97-p38 Hand Level Data sheet

DEPTH

Authority To coal 233 ft.

Authority Rail to rail 245 ft.

Top of coal above rail. (Est. Rule) ft.

To coal 245 ft.

ALTITUDE OF TOP OF COAL

By estimated data

By instrumental data 136 ft.

Thickness

Max. in. Min. in. Aver. 72 in.

GEOLOGICAL DATA

Mine notes, date 1908

Coop No. Pyr. inv. Coal Ash inv.

CHEMICAL DATA

Analyses Face U. I. B. M. 8 Others
Car U. I. B. M. Others
Org. Sulf U. I. B. M. Others
Ash fusion U. I. B. M. Others
Ash anal. U. I. B. M. Others
#608 U. I. B. M. Others

Classification R.I. 139 U.C.I. 149

Misc. tests: Coking. Cleaning Boiler

Published descriptions:--

Railroad, Wagon, Idle, Abandoned

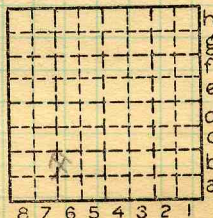
IDENTIFICATION

County No. 577

Coal No. 5

Quad. HARRISBURG
County SALINE

Part



Sec. 15

T. 9 N. S.
R. 6 E. W.

Index No. 0815 b6

COAL MINE LOCATION AND DATA



COAL MINE NOTES.

MAP No. *0815a*

S. *15 N. E. S. W.*

COUNTY *Saline*

TOWN

T. *9 S*

R. *6 E*

OPERATOR *O'Gara Coal Co.*

OFFICE *Chicago.*

MINE *#3*

TIPPLE *Automatic Damp.*

ENGINES

BOILERS

DRUM

SHAFT

CAGE

HAULAGE *Wooden, 2 1/2 tons capacity.*

CARS

VENTILATION

DRAINAGE

SPRINKLING

WORKING SYSTEM

MINING METHODS

Electric Chain machines.

SIZE OF ENTRIES—MAIN

CROSS

ROOM

NECK

SIZE OF PILLARS—MAIN

CROSS

ROOM

SHAFT

CHAIN

BARRIER

AMOUNT OF TIMBERING

much timber.

SIZE

PROPORTION OF COAL UTILIZED

AMOUNT AND CHARACTER OF WASTE

ACREAGE OF COAL MINED

ACREAGE OF COAL REMAINING

PROPORTION OF MINE RUN AND SCREENED COAL

METHOD OF SIZING

Three Track Shaker Screen.

RESCREENED

SIZES

PER CENT

PROPORTION AND SIZE OF WASHED COAL

DAILY OUTPUT *1100 tons.*

UTILIZATION

MARKETS

Big 4 R.R.

FREIGHT RATES

SELLING PRICES AT MINE

~~0815a.~~

COAL LAND OWNED

LEASED

HELD IN FEE

COST OF LAND OWNED

LEASED

HELD IN FEE

ADDITIONAL NOTES *on dyke see separate page.*

*082229
etc*



COAL MINE NOTES.
CONTINUED.

OPERATOR *O'Gara Coal Co.*
ENTRANCE *Shaft.*

MINE #3

ELEVATION *369*

NAME OF COAL BED #5

DEPTH TO FLOOR *239*

THICKNESS OF COAL *72"*

ALTITUDE OF COAL *130*

MAX.

MIN.

AV.

LOCATION OF SECTION *Room #10 off 2nd W off 2⁵ of Main W.*

No.	SECTION.	In.
1	<i>Draw slate</i>	<i>4"</i>
2	<i>Coal</i>	<i>4"</i>
3	<i>Sulphur kidney</i>	<i>1"</i>
4	<i>Coal</i>	<i>78"</i>
5		
6		
7		
8		
9		
10		
11		
12		
Tape <i>6'-11"</i>		Total <i>6'-11"</i>

SAMPLE No. *W-34*

CAN No.

CONDITION *Average.*

GROSS WEIGHT *30**

TIME EXPOSED *45 min.*

NOT SHIPPED * *3* *6'-6"*

NOT INCLUDED *1+3*

SECTION



PHYSICAL PROPERTIES BY NUMBERS

ROOF *5" Draw slate, then Hard gray shale, Roof not good*
Draw slate averages 2" to 3" sometimes to 6" but not often.
FLOOR *Hard shale*

DIP

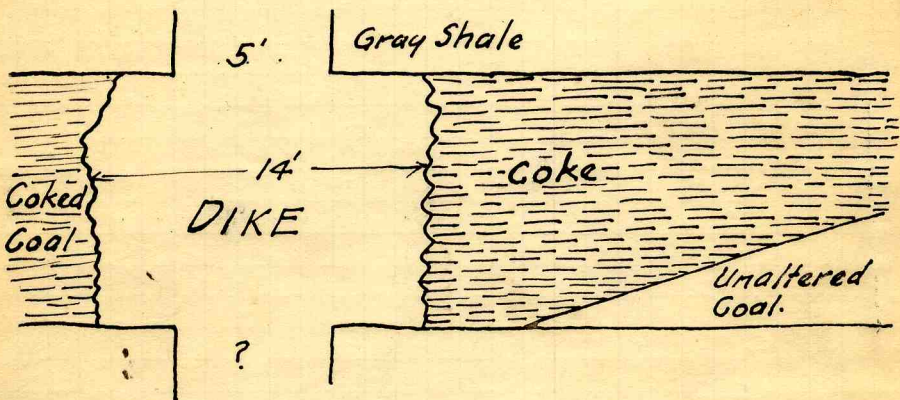
FAULTS, ETC.

GAS *Quite a little gas found. most abundant at face and in the high places, and most abundant near dyke.*

COLLECTOR *Wheeler*
Deuchler

REFERENCE *N.B. 139 P 10*
N.B. 79 P 38

0815a
DATE



The dike is cut by 2 entries, and in one a gas feeder in the roof contact has been burning from a $\frac{1}{4}$ " pipe with a 4" flame continuously for 3 years. A larger feeder in the floor is not allowed to burn.

Where the dike is cut by the entry it is thicker in the coal bed than above and presumably below.

The Rock of the dike is the same as in all other places noted and similar to #8 at Eldorado, in that the coal is altered or coked to a greater distance from the dyke, at the top of the seam than at the bottom.

Operator, **O'Gara Coal Co.** Date **1/26/08**
 Mine, **No. 3** Sec. **15** T. **9** S. **R. 6 E**
 Located, _____ miles from _____
 Location in mine, **Room #10 off 2nd W off 2nd S off West**

GRAPHIC SECTION		DESCRIPTION OF SECTION (AT POINT SAMPLED)		
In.	No.	No.	(Note character and thickness of roof)	Inches
1/4"			Draw slate 4 in.	
	2	1	Coal	4
	11	2	Sulphur kidney	1
		3	Coal	78
	24			
	36			
Coal				
78"	43			
	60			
	72			
	84			
6.10				
34.97				
50.50				
843				
			(Note character and thickness of floor)	
			Total thickness of coal.	83
		Condition, Average	Time, hr. 45 min.	
		Wt. Gross, 30 lbs.	Net, lbs.	
		What Nos. shipped by Co.?	3	
		Excluded from sample: No.	2	
		Sample represents	in. _____ tons.	
		Impurities? How do they occur?		

Sample No. **W-34** Can No. _____ Lab. No. **1112**
 Collector, **Wheeler NB.139 p.10** Coal: Survey No. **5**
 Mine, **O'Gara 3** Co. **Saline** Index No. **0815a**

Operator, Sahara Coal Co

Date Aug 24, 1933

Mine, No 3

Sec. 15 T. 9S R. 6E

Location in mine, Ribena 5th E, 6. S., 7 E., 16 N., Main E

Middle South line NE-¹/₄, SE-¹/₄ Sec. 14, T. 9S, R. 6E.

GRAPHIC SECTION		DESCRIPTION OF SECTION (AT POINT SAMPLED)		
In.	No.	No.	(Note character and thickness of roof)	Inches
			Roof: Gray shale many feet	
		1	Coal bright banded	3 ⁷ / ₈
		2	Fusain	¹ / ₁₆
		3	Coal bright banded	2
		4	Fusain and byrite (sFony)	¹ / ₄
		5	Coal bright banded	5
		6	Fusain little pyrite	¹ / ₁₆
		7	Coal bright banded	12 ¹ / ₂
		8	Fusain parting	
		9	Coal bright banded with thin fusain streaks	22 ¹ / ₂
		10	Coal bright banded	3 ¹ / ₂
		11	Fusain	¹ / ₄
		12	Coal bright banded	9 ¹ / ₈
			over	60 ⁷ / ₈
			(Note character and thickness of floor)	
			Total thickness of coal.	
		Condition, Dry	Time, 1 hr.	min.
		Wt. Gross, 75 lbs.	Net, 3 lbs.	
		What Nos. shipped by Co.? ALL		
		Excluded from sample: No. 4 (¹ / ₄ ")		
		Sample represents 60 ⁷ / ₈ in. tons.		
		Impurities? How do they occur? Thin pyrite lenses + calcite flecking		

(1 division = 3 in.)

Sample No.	Face 595	Lab. No.
Collector, McCabe, Benson Cady	Can No. HCCW-F45, 571-	Coal: Survey No. 5
Mine, O'Gara #3	Co. Saline	Index No. 0815

At this locality there is a strong system of slickensided joints running SE-NW-parallel to the faults in the mine. These joints are filled with calcite facings. The main cleat at right angles (NE-SW) contains no facings. This sample was collected 300-400 ft from fault.

Cleat well developed in mine - one (butts) parallel with faults - (NW-SE) and face cleat at right angle. Near faults butts become filled with calcite but not face cleat.



Operator, Sahara Coal Co

Date Aug 24. 1933

Mine, No 3

SE SW

Sec. 15 T. 9 S., R. 6 E.

Location in mine, Face Room 8- 2nd E., 16th S., (about cen. SW 1/4 SE 1/4 SE 1/4 Sec 22 T 9 S., R. 6 E)

GRAPHIC SECTION		DESCRIPTION OF SECTION (AT POINT SAMPLED)		
In.	No.	No.	(Note character and thickness of roof)	Inches
			Roof: Gray shale, many feet	
		1.	Coal, bright banded	6 1/2
		2.	Fusain	1/8
		3.	Coal bright banded	10 1/4
		4.	Fusain	1/8
		5.	Coal bright, banded	6
		6.	Fusain	1/4
		7.	Coal bright banded	2 3/4
		8.	Fusain	1/8
		9.	Coal bright banded	10 1/4
		10.	Fusain	1/8
		11.	Coal bright banded	11 1/4
		12.	Pyrite, stony - Discarded)	1 1/4
		13.	Coal, bright, banded	16 3/4
		14.	Fusain	1/8
		15.	Coal	7 1/8
			Floor, smooth, hard, underclay.	
			(Note character and thickness of floor)	
			Total thickness of coal.	72 1/8
			Condition, Dry	
			Time, 1 hr. min.	
			Wt. Gross, 75 lbs.	
			Net, lbs.	
			What Nos. shipped by Co.? All but #12	
			Excluded from sample: No. 12 -	
			Sample represents 70% in. tons.	
			Impurities? How do they occur? - lenses of pyrite and calcite + kaolinite faces - none numerous	

(1 division = 3 in.)

Sample No. _____ Can No. V. 355 Face Lab. No. _____

Collector, LCM Cobe, ET Benson, H 436, T 646 H Cecil W. Coal: Survey No. 5

Mine, O Gara #3 Co. Saline Index No. 0815

R.—COAL SAMPLE SHEET.

Operator, Sahara Coal Co

Date Aug 24, 1933

Mine, O'Gara No 3

Sec. 15 T. 9S R. 6E

Location in mine, Room 1, 4th West, 7th South, 2nd E. South

Cen-SE-SW. 23, T 9S., R 6E

GRAPHIC SECTION		DESCRIPTION OF SECTION (AT POINT SAMPLED)		
In.	No.	No.	(Note character and thickness of roof)	Inches
			Roof - gray shale - many feet Coal, bright banded, with 4 thin (1/16") fusain parting in middle third of seam.	54"
		(Note character and thickness of floor)		
		Total thickness of coal.		
		Condition, Dry (floor moist)	Time, 1 hr.	min.
		Wt. Gross, 75 ± lbs.	Net, lbs.	
		What Nos. shipped by Co.? all		
		Excluded from sample: No. none		
		Sample represents 54 in. tons.		
		Impurities? How do they occur? - Calcite facings in upper foot, rest coal clean.		

(1 division = 3 in.)

Sample No. _____ Can No. Face T 651 Lab. No. _____
 Collector, McCabe Benson acc W - P 36, H 808 clay Coal: Survey No. 5
 Mine, No 3, O'Gara Co. Saline Index No. 0815

abandoned 9/65

TICK HILL MINE?

ISGS : 1962 possibly?
Mine Index # 3281

Pit #1 SENW Sec. 26, T. 9 S., R. 6 E.

Pit #2 SENW Sec. 20, T. 9 S., R. 7 E.

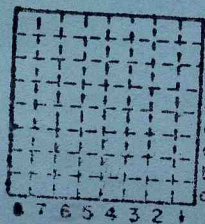
poss. ISGS MI #4706? wrong Range?

(Probably loading on the railroad at
Harrisburg - loading dock towards Carrier
Mills - JAS)

see 23
95 7E

Marshall Equipment Company "Mary Anne Mine # 1"

L-114



See above

T.	N.
R.	S.
	E.
	W.

Index No.

Saline



Mine originally operated by: (1) Oscar Landsnes

Date 1936 L-27

Original name or number: #1
Illinois Coal Report 1936 p.

LATER OPERATORS

Date	Operator	Name or No.
2 1937	William Karnes	#1
1938	Oscar Lands	#1
3 1939	Wilson & Lane	
4		
5		
6		
7		
8		
9		
10		
11		
12		
13		
14		

* Also owners

#See ownership sheet

Railroad, Wagon, Idle, Abandoned Drift Mine

IDENTIFICATION L-27

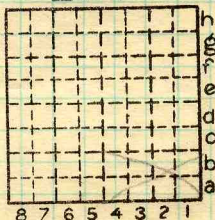
County No.

Coal No. 5

Quad. Harrisburg

Part

County Saline



Sec. 23

T.	9	S.
R.	6	E.

Index No.

0823

COAL MINE OPERATOR
LOCAL MINE

Period				Tons			
Mo.	Day	Year	Mo.	Day	Year		
			slpg		1960	14	000
			"		1961	119	020
					1962	186	866
					1963	199	917
					1964	180	610
					1965	124	429

SUMMARIES

No.	to	No.

Railroad, Wagon, Strip, Idle, Abandoned

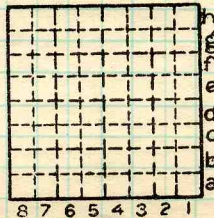
IDENTIFICATION

County No. _____ Coal No.

Coal Report No. L-114

Quad. _____

County Saline



Sec.

T. _____ N.
 S. _____
 R. _____ E.
 W. _____
 Index No. _____

COAL MINE—PRODUCTION

ILLINOIS GEOLOGICAL SURVEY, URBANA

Mine originally operated by: (1)

Date

1960 (July)

Original name or number: Marshall Equip. Co. # 1
Illinois Coal Report 1960 p. 20

LATER OPERATORS

Date	Operator	Name or No.
2 1965	Marshall Equip. Co.	Mary Ann #1
3		
4		
5		
6		
7		
8		
9		
10		
11		
12		
13		
14		

*Also owners

#See ownership sheet

Railroad, Wagon, Strip, Idle, Abandoned

IDENTIFICATION

County No. _____

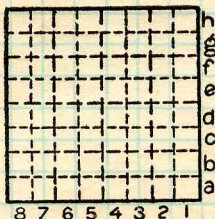
Coal No.

Coal Report No. L-114

Quad.

County

Saline



Sec.

T. N.
S. S.

R. E.
W. W.

Index. No.

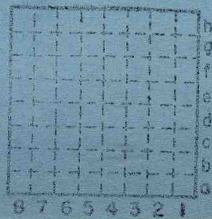
COAL MINE OPERATOR



Abandoned
June 1962

Black Dot Coal Co., #3
~~Marshall Equipment Co., #1~~

ISGS M[#] 3281
L-115



Sec. 26
 T. ~~11~~ S.
 R. 6 E.
 Index No. ~~W.~~

✓ Saline

Mine originally operated by: (1)

Date

1961

Marshall Equipment Co.

Original name or number:

"Mary Ann" #2

Illinois Coal Report 1961 p. 19

LATER OPERATORS

Date

Operator

Name or No.

1961 Marshall Equipment Co.

1

1961 Black Dot Coal Co.

"Tick Hill" # 3

2
3
4
5
6
7
8
9
10
11
12
13
14

3281

*Also owners

#See ownership sheet

Railroad, Wagon, Strip, Idle, Abandoned

IDENTIFICATION

County No. _____

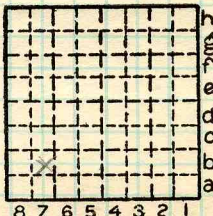
Coal No.

Coal Report No. L-115

5

Quad.

County Saline



Sec. 26

T. 9 N. ✓
S.

R. 6 E.
W. ✓

Index No.

COAL MINE OPERATOR



Period				Tons			
Mo.	Day	Year	Mo.	Day	Year		
					1961	1	480
					1962	1	51

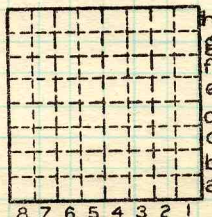
SUMMARIES

No.	to	No.
-----	----	-----

Railroad, Wagon, Strip, Idle, Abandoned

IDENTIFICATION

County No. _____ Coal No. _____
Coal Report No. L-115 5
Quad. _____
County Saline



Sec. 26

T. _____ N.
9 S.
R. 6 E.
W.

Index No. _____

COAL MINE-PRODUCTION

ILLINOIS GEOLOGICAL SURVEY, URBANA