

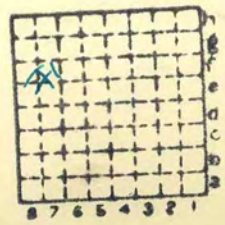


Form 180

Plains N.C.

~~*~~

L 12



Sec. 4

T.	16	N.
R.	7	W.

Index No.



Mine originally operated by: (1)

Date

1931.

L-12

Plains Mining Co.
Pleasant Plains

Original name or number:

Illinois Coal Report

p.

LATER OPERATORS

Date	Operator	Name or No.
2		
3		
4		
5		
6		
7		
8		
9		
10		
11		
12		
13		
14		

* Also owners

See ownership sheet

Railroad, Wagon, Idle, Abandoned Shaft Mine

LOCAL MINE

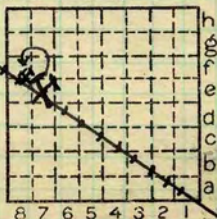
IDENTIFICATION L-12

County No. ~~X~~ (L-12) Coal No.

Quad. 159

Part 5

County Sangamon



Sec. 4
 T. 16 N.
 R. 7 W. S.
 Index No.

COAL MINE OPERATOR

0704

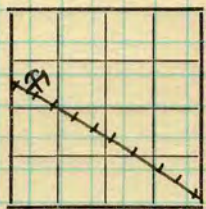
Location and Elevation Data

Location: Exact ~~Approximate~~
 (Approximate only if no trace or record of original exists)
 Location by W. B. Roe
 Date 4-30-31 Notebook No. 602 Page 27-235
 Looseleaf ref. _____
 Map files No. 12-83-12d

Description of location

Position in sec., 1/4 sec., 40 acres

_____ feet from North line
 _____ feet from East line
660 feet from South line
450 feet from West line



Sec. 4
 T. 16 N.
 R. 7 W.

Other description: L-12
Idle 1942

Farm _____
 No. _____
 Company Plains Mining Co.
 No. _____
 County No. ~~A~~ (L 12)

Elevation 613.8 ft.

By W. B. Roe

Method: Level, transit, alidade, hand level


Elevation of Alidade
Casing

Height of point above ground 0

Date 4-30-31 Notebook 602 Page 27-235
 Looseleaf ref. _____

Map files No. 12-83-12d

Description of item: (drill hole, mine, etc.) Mine shaft.
128' top No 5 58 LOCAL MINE

County Sangamon Quadrangle Callala Index No. 0704 F8
L-72
 (45576-1M-10-30) 

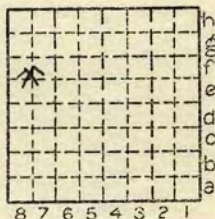
Location and Elevation Data

Location: Exact Approximate
(Approximate only if no trace of record of original exists)
Location by W. B. Roe
Date 1931 Notebook No. 602 Page 217-235
Looseleaf ref.
Map files No. 1883-12d.

Description of Location

Position in sec., 1/4 sec., 40 acres

feet from North line
feet from East line
660 feet from South line
450 feet from West line } NW 1/4



Sec. 4
T 16 N.
R E.
7 W.

Other description: L-12

Farm
No.
Company Plains Mining Co.
No.
County No. X

8489

Elevation 6138 ft.
By W. B. Roe

Method: Level, transit, alidade, hand level
PT

Elevation of
Height of point above ground
Date Notebook P.
Looseleaf ref.

Map files No.
Description of item: (drill hole, mine, etc.) Shaft Mine

County Scagamon Quadrangle Tallola Index No. 0704F8