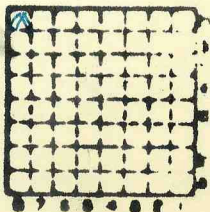


Square Deal cc

L 31

ms 4038  
236



Sec. 12

T. 9

R. 2

Index No.





Mine originally operated by: (1)

Square Deal Coal Co.

Date

1936

Original name or number:

Illinois Coal Report 1936 p.

LATER OPERATORS

Date	Operator	Name or No.
2		
3		
4		
5		
6		
7		
8		
9		
10		
11		
12		
13		
14		

\*Also owners

#See ownership sheet

Railroad, Wagon, Strip, Idle, Abandoned

38

IDENTIFICATION

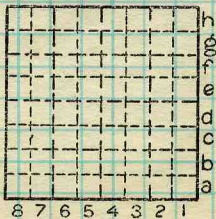
County No. \_\_\_\_\_

Coal No.

Coal Report No. L-31

Quad. W. Frankfort

County Williamson



Sec. 12

T. 9 N. S.

R. 2 E. W.

Index No.

0612

COAL MINE OPERATOR

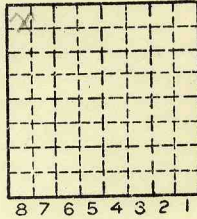
Location and Elevation Data

Location: Exact Approximate
(Approximate only if no trace of record of original exists)
Location by Dept Mines & Minerals
Date Notebook No Page
Looseleaf ref.
Map files No.

Description of Location

Position in sec., 1/4 sec., 40 acres

feet from North line
feet from East line
feet from South line
feet from West line



Sec. 12
T 9 N.
R 2 E.
W.

Other description: L-31

Farm No.
Company Square Deal Coal Company
No.
County No.

Elevation ft.

By

Method: Level, transit, alidade, hand level

Elevation of

Height of point above ground

Date Notebook P.

Looseleaf ref.

Map files No.

Description of item: (drill hole, mine, etc.)

County Williams or Quadrangle Frankfort Index No. 0612