



Mine originally operated by: (1) Rufus Hursman

Date 1936 L-4

Original name or number: Illinois Coal Report 1936 D.

LATER OPERATORS

Date	Operator	Name or No.
2 1937	Charles Houck	

3  
4  
5  
6  
7  
8  
9  
10  
11  
12  
13  
14

No 1939 Prod.

\* Also owners #See ownership sheet

Railroad, Wagon, Idle, Abandoned Slope Mine

IDENTIFICATION

County No. 69

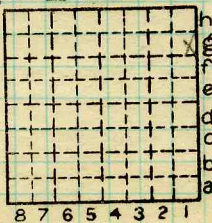
Coal No. 6

Quad.



Part

County Greene



Sec.

T.

R.

Index No.

N.  
S.  
E.  
W.

COAL MINE OPERATOR LOCAL MINE