



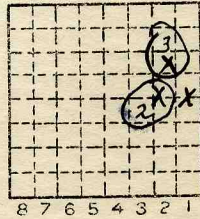
Location and Elevation Data

Location: Exact Approximate
(Approximate only if no trace of record of original exists)
Location by.....
Date..... Notebook No..... Page.....
Looseleaf ref.....
Map files No.....

Description of Location

Position in sec., 1/4 sec., 40 acres

.....feet from North line
.....feet from East line
.....feet from South line
.....feet from West line



Sec. 21
T 19 N.
R 11 W.

Other description:.....

Farm.....
No.....
Company Delaware
No. 1
County No. 579

MINE NOTES

Elevation.....ft.
By.....
Method: Level, transit, alidade, hand level

Elevation of.....
Height of point above ground.....
Date..... Notebook..... P.....
Looseleaf ref.....

Map files No.....
Description of item: (drill hole, mine, etc.).....

County Vermillion Quadrangle 149 Index No. 172 1/2 SEE 1
(A4242-5M-8-39) 2

NOT USED
ABD



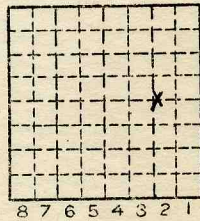
Location and Elevation Data

Location: Exact Approximate
(Approximate only if no trace of record of original exists)
Location by.....
Date..... Notebook No..... Page.....
Looseleaf ref.....
Map files No.....

Description of Location

Position in sec., 1/4 sec., 40 acres

.....feet from North line
.....feet from East line
.....feet from South line
.....feet from West line



Sec. 21
T 19 N.
S.
R 11 W.

Other description:.....

Farm.....
No.....
Company DeLevan
No. 2
County No. 590

Elevation..... ft.

By.....

Method: Level, transit, alidade, hand level

Elevation of.....

Height of point above ground.....

Date..... Notebook..... P.....

Looseleaf ref.....

Map files No.....

Description of item: (drill hole, mine, etc.) NOT USED

County VERMILION Quadrangle 149 Index No. 172/E2



Location and Elevation Data

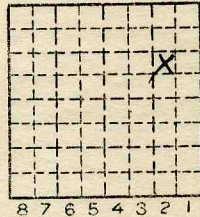
Location: Exact Approximate
(Approximate only if no trace of record of original exists)

Location by.....
Date.....Notebook No..... Page.....
Looseleaf ref.....
Map files No.....

Description of Location

Position in sec., 1/4 sec., 40 acres

.....feet from North line
.....feet from East line
.....feet from South line
.....feet from West line



Sec. 21
T 19 N.
R 11 W.

Other description:.....
.....

Farm.....

No.....

Company Delaware

No. 3

County No. ST

Elevation.....ft.

By.....

Method: Level, transit, alidade, hand level

Elevation of.....

Height of point above ground.....

Date..... Notebook..... P.....

Looseleaf ref.....

Map files No.....

Description of item: (drill hole, mine, etc.)..... NOT USED

County VERMILION Quadrangle 149

Index No. 172/F2



(Sheets) COAL PRODUCTION (Sheet)

Period						Tons		
Mo.	Day	Year	Mo.	Day	Year			
Delaware # 1			1895			45 000		
# 2			1895			5 000		
Delaware C. C.			1896			75 000		

SUMMARIES

No.	to	No.				

Railroad, Wagon, Strip, Idle, Abandoned

Sec.

IDENTIFICATION

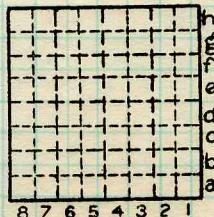
County No. _____

Coal No.

Coal Report No. _____

Quad.

County



T. N.
S. S.
E. E.
R. W.
Index No.

COAL MINE—PRODUCTION

ILLINOIS GEOLOGICAL SURVEY, URBANA



Mine originally operated by: (1)

Delaware

Date

Original name or number:

Illinois Coal Report

p.

#1 COUNTY NO.
#2 COUNTY NO.
#3 COUNTY NO.

LATER OPERATORS

Date

Operator

Name or No.

2 1895 #1, #2 (Slope)
3 1896 Delaware C. C. ?

COUNTY NO. #1 - 579

COUNTY NO. #2 - 580

COUNTY NO. #3 - 581

• Also owners

#See ownership sheet

Railroad, Wagon, Idle, Abandoned

LOCAL MINE

IDENTIFICATION

County No.

Coal No.

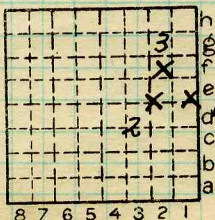


Part

Quad.

County

VERMILION



Sec. 21

T. 19 N. S.

R. 11 E. W.

Index No.

1721

COAL MINE OPERATOR