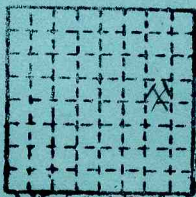


Longwall str
 all notes fr
 1982, are
 books. ASD 4/92

9/8/94 - 3 Books are
 in same file area
 as Mine Notes.
 Phil DeMaio has
 negs! & (some)
 documentation.
 Discussed eventual
 file of photos in
 Map Rm. H. Nambrey

Zeigler Coal Co.
 "Old Ben No. 24" Mine

Herrin Coal



Seal

I	6	N.
R.	2	S.
		E.
		W.

Index No.

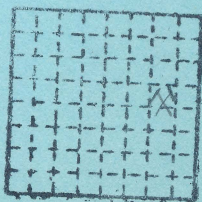
Mine Index 866

Franklin Co.

Longwall study notes, including
all notes from late 1976 to
1982, are filed in 3 separate
books. PSD 4/92

Zeigler Coal Co.
"Old Ben No. 24" Mine

Herrin Coal



Seal

I	6	N.
R.	2	S.
		E.
		W.

Index No.

Mine Index 866

Franklin Co.



(Sheets) COAL PRODUCTION (Sheet)

Period		Tons		
Mo.	Day Year	Mo.	Day Year	
<i>First production</i>				
	1965	2 1	248	232
	1966	1	752	446
	1967	2	369	830
	1968	2	644	331
	1969	3	187	179
	1970	2	823	225
	1971	2	428	674
	1972	2	506	740
	1973	2	377	487
	1974	1	959	834
	1975	1	856	311
	1976	1	822	894
	1977	1	746	072
	1978	1	120	078
	1979	1	448	899
	1980		994	427
	1981			0
	1982			0
	1983		172	329
	1984	1	413	406
	1985	1	262	686
	1986	1	523	916
	1987	1	566	007

OLD BEN COAL CO.
MINE NO. 24

Idle Sept 2 -
Reopening begins (late Aug '81) prod
production resumes October

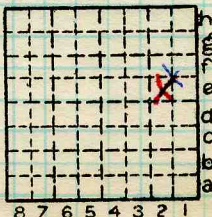
SUMMARIES				
No.	to No.			
	1965 TO 1971	15	453	917
	1988	1	812	531
	1989	1	603	533

Railroad, Wagon, Strip, Idle, Abandoned

IDENTIFICATION

County No. _____
Coal Report No. S-25
Quad. _____
County Franklin

Coal No. _____
 6



Sec. 11

T. 6 N. S.
R. 2 E. W.
Index No.

COAL MINE—PRODUCTION

ILLINOIS GEOLOGICAL SURVEY, URBANA





FORM 180 W

Coal Production:	1990
	1991
	1992
	1993
	1994
	1995
	1996

Total Production:

Zeigler Coal Co.

Old Ben No 24 Mine

Mine Index 866

Franklin Co.

ILLINOIS GEOLOGICAL SURVEY, URBANA

Old Ben Coal Corporation 24
Location - SE NE Sec. 11-6S-2E

Channel Sample 1 - face of 2nd N. entry Main N.
Approximately 6"-1' of coal above channel
(face - 1146' cut 9/1/65)

Total thickness - 82½"

1'8 3/4" Coal - normally bright banded, much calcite
on vertical fractures, mineralized fusain
at 6 3/4", 1/4" bony band at 8" and 10½".

1'9" Fusain - soft (1/4")

2'3½" Coal - normally bright banded, calcite and pyrite
on vertical fractures.

2'4" Fusain - heavily mineralized with pyrite, omitted
from sample.

45" Coal - normally bright banded, calcite and pyrite
on vertical fractures, flattened and elongate
pyrite nodule to left of channel - 36", thin
less 1/8" soft fusain bands at 38" and 41".

64" Coal - not as bright as above, dirty, much calcite
and pyrite on vertical fractures, 1/2" bony
band at 50½", general dull appearance.

64½" Pyrite Zone - granular (1/2"), omitted from sample.

67½" Coal - as above - dull.

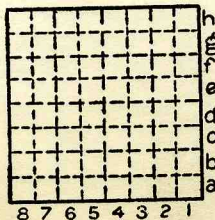
68¼" Shale - medium gray, blue band, 3/4", omitted from
sample.

82½" Coal - normally bright banded with much calcite
and pyrite on vertical fractures and along
bedding.

By..... HJG, JWC Date..... 12/27/65

Quad..... Part.....

County.....



Sec.	11
T.	6
S.	
R.	2
E.	

ILLINOIS GEOLOGICAL SURVEY, URBANA

Old Ben Coal Corporation 24
Location - SE NE Sec. 11-6S-2E

Channel Sample #3 - 5th South off 8th W. South +150'
(mined Dec. 21, 1965)

Total thickness - 6'6"

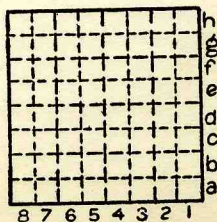
- 1'4" Coal - normally bright banded, calcite on vertical fractures, 1/8" bony band at 7" and at 1'3".
- 3'2½" Coal - normally bright banded, calcite and pyrite on vertical fractures, thin, less than 1/16" pyrite stringers in top 1", 1/8" soft fusain at 2", 6 3/4".
- 3'3½" Fusain - fairly soft.
- 4'7" Coal - normally bright banded, fusain and pyrite, discontinuous and micaceous band, less than 1/8" common throughout.
- 5'5½" Coal - normally bright banded, calcite on vertical fractures.
- 5'7" & 6'3" Shale - medium gray, blue band (omitted from sample) heavy concentration of pyrite along bedding and vertical 1", not omitted from sample.
- 6'6" Coal - normally bright banded, 3/8" fusain mineralized at 71".

Note: Bottom 2' generally dull in appearance than top 4 feet.

By HJG, JWC Date 12/27/65

Quad. Part.

County



Sec. 11

T.	6	S.
R.	2	E.

ILLINOIS GEOLOGICAL SURVEY, URBANA

Old Ben Coal Corporation 24
Location - SE NE Sec. 11-6S-2E

Channel Sample #2 - 2nd entry Main South
(face +1504' cut 10/12/65)

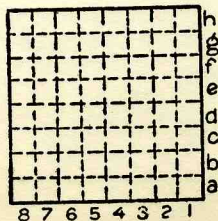
Total thickness - 93"

- 12" Coal - normally bright banded, calcite and pyrite on vertical fractures.
- 2'9½" Coal - normally bright banded, calcite on vertical fractures, 1/8" fusain mineralized with thin pyrite stringers 1'2 3/4", 1/4" bony band 1'6¼", 1'7½".
- 2'10½" Fusain - soft 1"
- 3'0" Coal - heavily shot with pyrite along cleat and vertical fractures.
- 4'4" Coal - normally bright banded, calcite and rarely pyrite on vertical fractures.
- 75" Coal - normally bright banded, calcite and locally pyrite abundant on the cleat, 1/2" bony coal at 4'10¼" and at 67".
- 76½" Shale - medium gray, includes thin lense of pyrite and vitrain, blue band, omitted from sample.
- 93" Coal - dull, much pyrite and calcite along vertical fractures and along bedding, generally dull in appearance, not as bright as above.

By HJG, JWC Date 12/27/65

Quad. Part.

County



Sec. 11

T.	6	<input checked="" type="checkbox"/>
		S.
R.	2	<input checked="" type="checkbox"/>
		E.

8 7 6 5 4 3 2 1

Illinois State Geological Survey

Mine #24

Old Ben Coal Company Face Channel Sample #1
(Column sample also taken here)

Floor and roof are coal. 1455'E, 845'N of center of Sec. 9-6S-2E. In mine: 55th N of 1st W-S Room #29

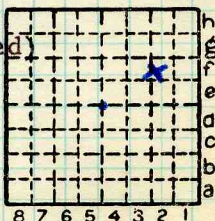
roof
thick

6"	0" - 6"	Coal - Normally bright banded
0 5/8"	6" - 6 5/8"	Shale - Coaly, dark brown
9 3/8"	6 5/8" - 16"	Coal - Normally bright banded
1 1/8"	16" - 16 1/8"	Fusain - Soft, somewhat shaley
4"	16 1/8" - 20 1/8"	Coal - Normally bright banded
5/8"	20 1/8" - 21 3/4"	Fusain - Soft, and vitrain
13 1/2"	21 3/4" - 35 1/4"	Coal - Normally bright banded
1 3/8"	35 1/4" - 36 5/8"	Pyrite - Lens-like (Excluded)
13"	36 5/8" - 49 5/8"	Coal - Fairly bright
1 1/2"	49 5/8" - 51 1/8"	Pyrite - Lens (Excluded)
1"	51 1/8" - 52 1/8"	Coal - Bright, many calcite stringers on bedding planes
2 1/2"	52 1/8" - 54 5/8"	Coal - Fairly dull
1"	54 5/8" - 55 5/8"	Shaley Coal - Soft fusain (a lens)
2 1/2"	58 1/8"	Coal - Fairly dull, probably high in ash
1 1/4"	60 3/8"	Coaly Shale - With vitrain stringers
	67 7/8" - 7 1/2"	Coal - Upper 1/3 probably high in ash
	68 3/8" - 1/2"	Shale - (Blue band) hard, well banded (Excluded)

M. E. Hopkins

Tukrel R. Thakur

By Heinz H. Damberger Date 4-8-70



Quadrangle _____

County FRANKLIN

Sec. 9 T. 6S R. 2E



84 7/8" - 16 1/2"

Coal - Several pyrite lenses
up to 3/8"

4 1/2"

Coaly Shale - very hard, many
pyrite lenses (Not mined
and not sampled in Face
Channel or Column Sample**General remarks**

Cleats fairly well developed, somewhat irregular especially in upper 2 feet, cleat filling almost exclusively calcite, very little pyrite, no kaolinite observed.

Illinois State Geological Survey

mine #24

Old Ben Coal Company, Sample #2
 Room 4B, 25th south off 13th, West South
 1340'S, 2470'E of center of Sec. 15-6S-2E
 Roof not visible

0-7 1/2"

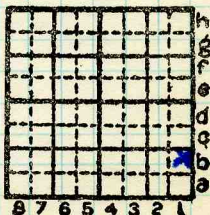
- 7 1/2" Coal
- 1/4" Coaly shale - Lenticular
- 5 1/2" Coal - Fairly bright
- 1" Coal - Dull
- 13 1/2" Coal - Normally bright banded, several dull layers
- 19" Coal - Normally bright banded
- 1/4" Fusain - soft
- 3 1/2" Coal - Normally bright banded
- 7 1/2" Coal - Normally bright banded, several dull bands which are high in ash
- 1 1/2" Coal - Shaley
- 2 1/2" Coal - Fairly dull, high in ash
- 1 1/4" Shale - Coaly, vitrain stringers
- 4 3/4" Coal - Some vitrain stringers, fairly high in ash
- 1" Coal - Bright
- 2" Coal - Dull, vitrain stringers
- 3/4" Shale - Brown, "blue band", hard
- 1" Coal - Shaley, somewhat pyritized, many shale lenses
- 5" Coal - Normally bright banded, several thin shaley lenses up to 1/8" thick

77 3/4" Bottom of mined coal not bottom of coal seam underclay not exposed

M. E. Hopkins
 Tukrel R. Thakur

By Heinz H. Damberger Date 4-8-70

Quadrangle _____



County FRANKLIN Sec. 15 T 6S R 2E

Illinois State Geological Survey

(Mine 24)

Old Ben Coal Company, Face Channel Sample #3.
Room #4, off 7th South off 18th East South.

1730' W, 400' S of center of Sec. 13-6S-2E

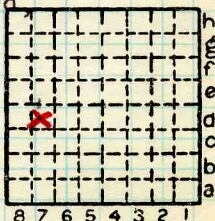
Total thickness measured 6'6"

Roof and floor not exposed, in coal

- | | | |
|-----|------------------|---|
| 0 | 10½" = 10½" | Coal - Normally bright banded, few shaley lenticles |
| 10½ | - 11" = ½" | Fusain - Lenticular, soft |
| | - 25½" = 24½" | Coal - Normally bright banded, several soft fusain lenses which are somewhat shaley |
| | - 25 7/8" = 3/8" | Coal - Dull |
| | - 27 3/8" = 1½" | Coal - dull, numerous vitrain stringers, some pyrite nodules |
| | - 29 3/8" = 2" | Coal - Normally bright banded |
| | - 30 5/8" = 1¼" | Coal - Dull, probably high in ash |
| | - 46" = 15 3/8" | Coal - Normally bright banded |
| | - 46¼" = ¼" | Fusain lens - Soft, up to ½" thick |
| | - 52 3/4" = 6½" | Coal - Normally bright banded, very lenticular, with several bands rich in ash |
| | - 56 3/4" = 4" | Coal - Dull few vitrain lenses |
| | - 58 3/4" = 2" | Coal - Normally bright banded, very lenticular |
| | - 61 3/4" = 3" | Shale - Very coaly |
| | - 65 3/4" = 4" | Coal - Fairly dull, probably high in ash |
| | - 69¼" = 3½" | Coal - Fine banded |
| | - 70½" = 1¼" | Shale - Dark brown, (blue band) fairly hard pyrite |

M. E. Hopkins
Tukrel R. Thakur
Heinz H. Damberger

By _____ Date 4-8-70



Quadrangle _____

County FRANKLIN Sec. 13 T. 6S R. 2E



78" - 7 $\frac{1}{2}$ "

Coal - Normally bright banded,
thin dirty lenses

OLD BEN COAL CO. MINE # 24 BENTON, FRANKLIN COUNTY,
ILLINOIS.

Visit by Heinz Damberger, H.-F. Krausse, and possibly
others, July 25 or 26, 1974. Reconnaissance visit
for Herrin (No. 6) Coal Roof Study.

All underground mines in the state mining the
No. 6 Coal were visited in connection with this
study, which was a contract sponsored and financed
by the U.S. Bureau of Mines to determine the rela-
tionships between geologic features and roof condi-
tions in the No. 6 Coal. After these reconnaissance
visits, several mines were selected for more detailed
mapping and study. Old Ben # 24 was not among them
and was not visited again for the roof study.

The following two pages of original handwritten
notes are all I could find from this visit. They are
not signed but they appear to be in Heinz Damberger's
handwriting. Reference is made to "Frieder's sketch"
(H.-F. Krausse), but this sketch, along with any
other notes he may have made, has been lost. No
photos or maps from this visit are available, either.

Damberger and Krausse did not generally have
their notes typed and filed and these here were
found after both men had quit working at the Survey.

John Nelson 5/17/76

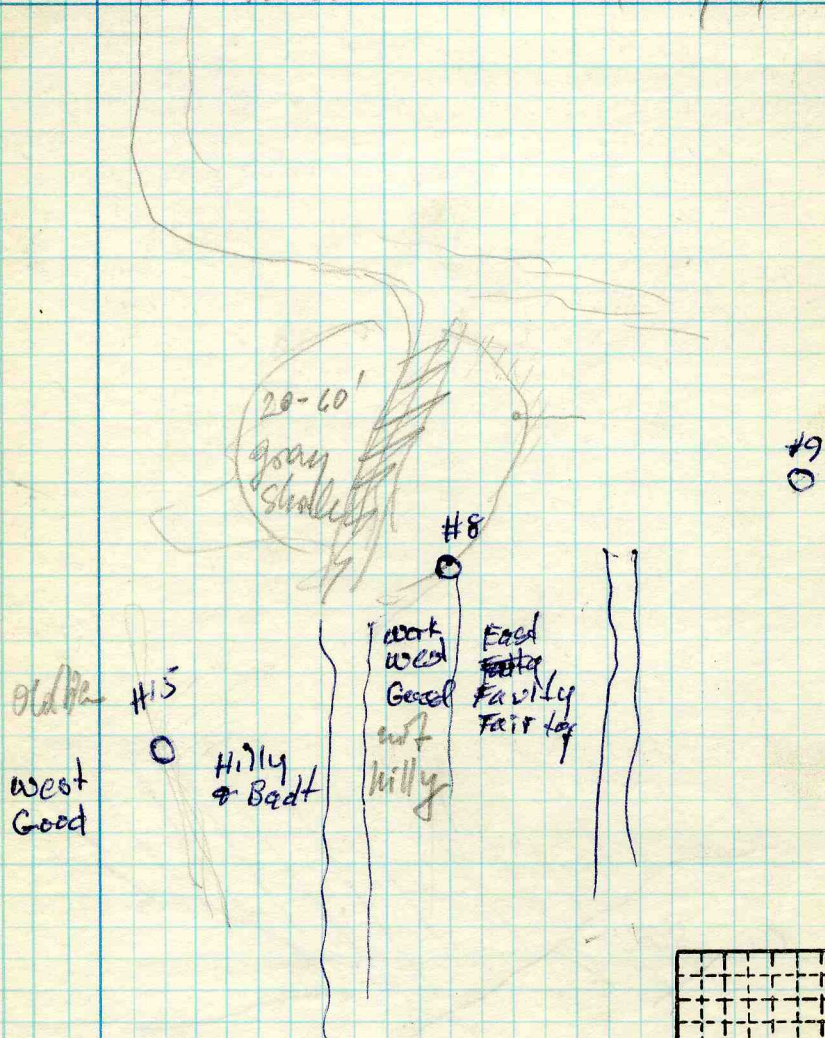
Longwall Study, beginning in
late 1976 is contained in 3 separate
Field Note Books.

PSD 9/80

Notes 1983 + on wards can go here.

Old Ben 24

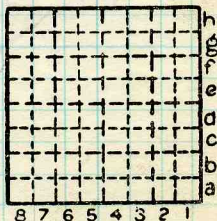
7/25/74



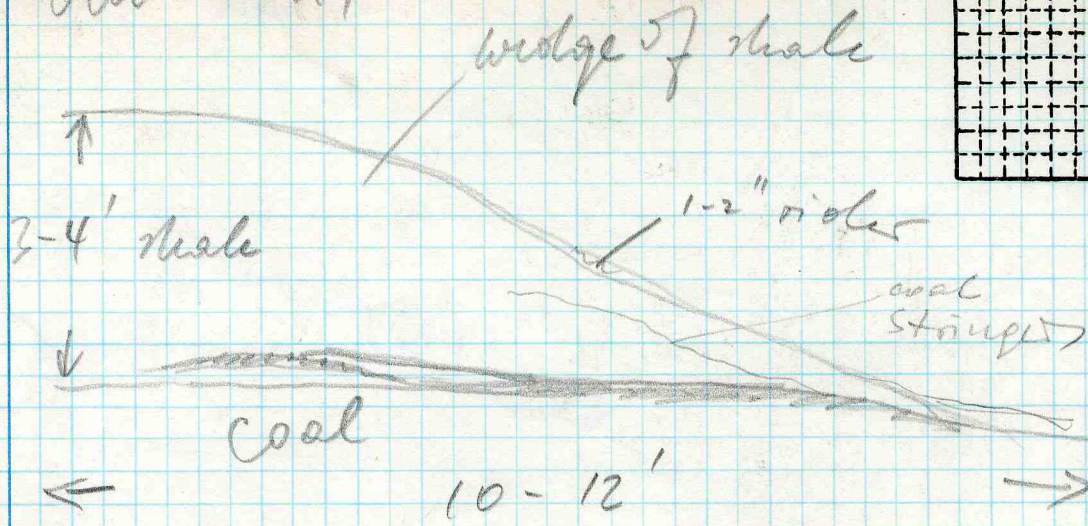
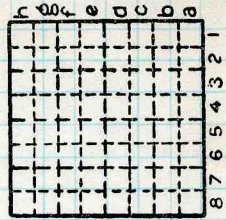
By _____ Date _____

Quadrangle _____

County _____ Sec. _____ T _____ R _____



Old Ben 24



Date _____

~ 150' north of Fredrick's bench
 in another roof fall caused by
 a number of ricks like above +
 irregular slips, slickensides, 6-8' gray sh.

By _____

Quadrangle _____

County _____

Sec. _____

T _____

R _____



Preparation plant and surface buildings at
Old Ben No. 24. Man shaft in background.
Photo by John Nelson, March 1981.

Mn-03a-053.tif

Date

MARKETS

OLD BEN SHAKE-UP RAISES QUESTIONS OF COAL MINE SALES, CORPORATE MOVE

A management shake-up at Old Ben Coal is sending tremors through the industry, raising questions about the future of company properties and its headquarters in Lexington KY.

The sudden retirement of Old Ben president Gerald Blackmore and the equally speedy appointment of Charles H. Bowman as his successor is attributed by many industry observers to a re-

COAL WEEK • July 21, 1986

5 structuring drive by British Petroleum, which owns controlling interests in Standard Oil, Old Ben's parent firm.

6 It "sounds to me that what you're seeing is the guiding hand of British Petroleum in straightening out the coal operation," suggested one industry analyst. "The best way to correct the problem today is with radical surgery."

7 Along with Bowman, who had been senior vice president for petroleum products and refining for Sohio Oil, other key appointments included: C. R. "Pete" Moore, senior vice president of marketing; Wayne Parke, senior vice president for operations planning and services; and D. J. Day, vice president for human resources. Day came over from Standard Oil while Moore had worked for BP Coal-North America. He had twenty years of experience in coal and uranium marketing for Getty Oil. Parke served previously as head of Old Ben's Illinois and Indiana divisions. A replacement for Parke has not yet been named.

8 All the shuffling is giving rise to speculation that the company may place one or more of its mines on the selling block. Old Ben #24 near Benton IL has struggled and some observers think it may be a cast-off candidate.

9 Old Ben and industry sources also say the relocation of company offices from Lexington to Cleveland is a possibility. Old Ben moved to the Blue Grass state from Chicago just three years ago, with officials saying at the time they wanted to be closer to holdings in eastern Kentucky. While an Old Ben spokesman said he had no announcement about any office switch, an industry analyst said such a move would make good corporate sense.

County _____ 8 7 6 5 4 3 2 1

COAL MINE OPERATOR





COAL WEEK, Vol. 16 No. 31 July 30, 1990

ZEIGLER CONCLUDES OLD BEN PURCHASE; B CANYON DROPPED, PRICE AT \$95 MILLION

Zeigler Coal, became Illinois's largest coal producer last week by acquiring nearly all of British Petroleum's remaining coal operations in the US.

The previously announced purchase price for BP properties Old Ben and Franklin Coal, a holding and sales company, was \$115 million, but it was reduced just before the sale closing (see related story page 2). Sources said the final base price was \$95 million with an additional \$10 million to be paid by Zeigler if it reaches undiscovered production levels.

Zeigler president Michael Reilly predicted his privately-held company's leaner managerial approach would boost operations at Old Ben mines in Illinois, Indiana and West Virginia. "In a year, you're going to see a big difference in Old Ben," Reilly told *Coal Week*. "It will be a lot more efficiently run." Old Ben's office in Cleveland will be closed within a few months and layers of management are being trimmed up and down the corporate hierarchy.

Combined Illinois offices at Benton

Zeigler plans to combine the current operations office for its three southern Illinois mines with Old Ben's Benton IL office, which had responsibility for four mines. The two former Old Ben mines in Indiana and Mine 20 will be grouped together.

Despite last week's announcement by a southern Illinois politician, Reilly insisted that no decision has been made to reopen the Old Ben No. 21 mine, closed since the end of March. No. 21 coal is "several dollars a ton" higher than what Zeigler can sell it for a profit, he said. "We have to find a way to get that cost down." Sources told *Coal Week* the BP-Zeigler sale agreement contains an option that could serve as a disincentive for the reopening of No. 21. "If Zeigler doesn't operate 21, they don't pick up some of the liabilities associated with the closing of 21," a source said.

Most Old Ben employees to stay on at Zeigler

Reilly said the "vast majority" of Old Ben and Franklin Coal personnel would stay on with Zeigler, but he didn't provide any numbers. According to sources, about 15 people at Old Ben's 80-person office in Cleveland were offered positions with Zeigler. At Old Ben's Benton office, 17 or 18 people were terminated, including high-ranking officials. The fewest cuts came in the coal sales group.

Reilly said his immediate goal is to "mine everything we can sell." He hopes the combined operations produce about 18 million tons a year. Zeigler has produced about 4 million tons a year and Old Ben about 14 million tons. Long range, Zeigler wants to continue growing. Said Reilly: "I'd like to expand in the West and expand in the East, but not this month."



FORM 180 W

Zeigler 24

Post-Dispatch
8/21/90 p.9C

88 Are Laid Off At Zeigler Coal

Nearly 90 workers, mostly miners, were laid off Monday by Zeigler Coal Holding Co. at two mines near Benton, Ill.

The layoffs numbered 47 at Mine 26 and 41 at Mine 24. Zeigler bought the mines about a month ago from Old Ben Coal Co. The two mines had employed 730 people prior to the job cuts.

"The jobs were cut because the manning was more than was really needed," said Michael Reilly, president of Zeigler. "In order to operate the mines in a competitive manner, the way Zeigler operates other mines, the manning had to be reduced."

Zeigler acquired three operating mines in Illinois from Old Ben, plus another mine that was closed, plus two mines in Indiana and one in West Virginia.

Reilly said the company would like to open the closed mine but had not yet determined whether that was feasible. He said further layoffs might occur as manning is studied.

"We would like to take a positive step and reopen the closed mine, but that decision has not been made at this time," he said.



Mine Name or No.,
 mile from

Operator, 19

Operator, 19

Entr

Dep

A.

B.

C.

D. Note collection of mine maps, drill records and shaft logs.

E. Notes on surrounding area,

Coal Week 6/22/92

**MO. PUBLIC SERVICES BUYS COAL;
 ZEIGLER TO SUPPLY SIBLEY 150,000 T**

A possible coal solicitation Missouri Public Service officials talked about in early spring (3-23-92 *Coal Week*) has become a reality, with MoPub eventually deciding to buy 150,000 tons of Illinois coal from Zeigler Coal's Old Ben No.s 24 and 25 mines. Deliveries to the Sibley power plant via Illinois Central and Santa Fe railroads began in April and will continue through December, an official said.

Final results of the utility's testing of three trainloads of coal from Coastal Coal's Skyline mine and a trainload of coal from Colowyo Coal Co.'s Colowyo mine have not been completely reviewed, but the coals burned well, the official said.

Both coals were blended and tested separately at Sibley with coal from ARCO Coal's Black Thunder mine. Additionally, the coals were burned without blending. Sometime in the third quarter MoPub could begin considering additional coal test candidates for extensive testing next year, but no coals have yet been selected.

over - (8/95)

See drill record sheet,

Railroad, Wagon, Idle, Abandoned

IDENTIFICATION

County No.

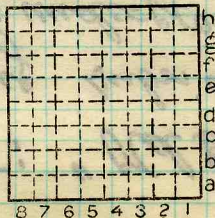
Coal No.



Part

Quad.

County



Sec.

T.

R.

N.

S.

E.

W.

Index No.

Coal week, 8/7/95: "Old Ben, a
 Ziegler Coal Holding subsidiary,
 has idled its No. 24 underground mine
 near Burton because of its mountainous
 stock pile. Union sources said the
 idling is expected to continue until
 the 1st or 2nd week of August. Old Ben
 sold some stockpile coal recently for
 about \$13/t, reportedly underbidding
 Kerr-McBee Coal Corp.!"

see
 see
 see
 see

1995-1996

(1) 1995-1996

(2) Effect on mining and production of former

1995-1996

(1) 1995-1996

1995-1996

see

2000-2001

1995-1996

1995-1996

1995-1996

1995-1996

1995-1996

1995-1996

1995-1996

1995-1996

1995-1996

1995-1996





FORM 180 W

SAMPLE HISTORY

Plant sampled: **Old Ben 24 (B)**Date: **Nov. 18, 1992**

Company: **Old Ben Coal Co**
David M. Young, President
500 N. DuQuoin, Benton, IL 62812

Sample ID: **OLDBEN24**
C32801

Company representative: **Lamon Hart**Mine (source of sample): **Old Ben No. 24B**Collected by: **Wayne T. Frankie**Seam identification: **Herrin**

Time of closure: *

Mining period represented (dates): **11/16-18/92**

Panel(s) & location(s) in mine: **Panel 18, near intersection of sections 23, 24, 25, and 26. (NW/NW/NW/NW of Section 25)**

Mine/Plant locations (descriptive):

$\frac{1}{4}$ or footage Section 11 Twp. 6S Rge. 2E

Type of Preparation Plant: **Jig Plant, built by Allen Garcia in 1982, rated at 800 tons per hour (raw coal), currently running at capacity, Reject 28 to 32 Percent.**

Sampling point:

increments: *

Belt (describe position in plant) **cutter on belt before train load-out**

Train

Truck

Company's sampling device (yes)

Type: **Gallager, Three stage sampler**

Primary every 1 min. and 50 sec., Secondary every 15 sec., tertiary every 10 sec., final product is 8 mesh.

Other (describe) **Sample represents approximately 30,000 tons.**

Procedures (describe other aspects):

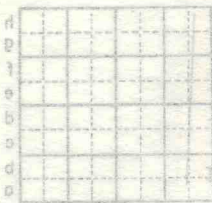
* **Sampled by mining company staff**

Additional Data:

"Coal," June 1996

Zigfus Coal Holding in late April 1996 idled its No. 24 mine, laying off 165 workers, leaving only 5 miners on payroll. Blamed declining demand for mine's high-sulfur coal.

UNW said that, at least for now, mine will not be sealed; ventilation system will be left on, so production could resume if a market for coal could be found.



we were optimistic," he said
we've seen, I'd be lying if I said
but given the indicators that
fort to find a home for that coal
"We are making a last-ditch ef
be renewed. State
next year and probably will no

Doc