



Form 180

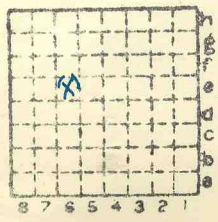
St. Louis *SC.*

S-6

Mi. # 654

J

361.  
+  
1801



Sec.	10
T.	4 <sup>N.</sup> <sub>S.</sub>
R.	5 <sup>E.</sup> <sub>W.</sub>
Index No.	



Mine originally operated by: (1) West Mine Coal Co.

Date 1900

Original name or number:

Illinois Coal Report

p. 50

1882-1930

LATER OPERATORS

Date Operator Name or No.

2 1920 St. Louis Coal Co. Florida

3 1940 Florida Coal Co. Florida

4 1942 Florida Coal Co  
of Paul Jones

5 1943 Coulterville

6 1946 Florida Coal Corp.  
Spartan Coal Co. Florida

7 Dec 1991 From 662 Supp via MetBas cards. MB

8 1903-05 A.E. Powell, Consolidated mine

1905-06 J. A. Grelm " "

9 1906-08 Coulterville cc

1908-13 West Mine Co Consolidated

10 1913-15 Underwood Coal Mng Consolidated

Due 2060 1915-20 West Side cc Consolidated

2060 11 1920-42 St Louis cc Florida

2060 12 1942-46 Florida cc Florida

2060 12 1946-51 Spartan cc Florida

13

14 NE SW (1948)

Sec. 10 • Also owners

#See ownership sheet

1946  
OK

Railroad, Wagon, Idle, Abandoned Shaft

I.C.

S-6

IDENTIFICATION

County No. 361

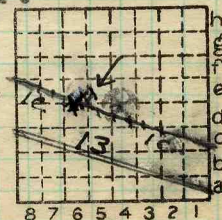
Coal No. 6

Quad. 243

(1948) 6'0"

Part

County Randolph



Sec. 10

T. 4 N S

R. 5 W.

Index No.

0110 E6

COAL MINE OPERATOR



( Sheets ) COAL PRODUCTION ( Sheet )

No.	Period						Tons	
	Mo.	Day	Year	Mo.	Day	Year		
			1930			1931	96	342
			1932			1933	102	995
			1933			1934	127	470
			1934			1935	200	972
6	1	1	1936	12	31	1936	161	775
6	1	1	1937	12	31	1937	216	257
S-6	1	1	1938	12	31	1938	689	554
						1939	152	489
						1940	177	574
							182	682
S-6	1	1	1941	12	31	1941	276	660
S-6	1	1	1942	12	31	1942	358	440
						1943	388	755
						1944	382	023
						1945	382	694
						1946	280	418
						1947	449	296
						1948	459	867
						49	330	014
						50	138	186

#4

SUMMARIES

No.	to	No.		
1900		1930	3	727 848
			4	417 402

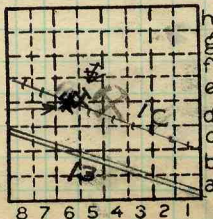
Railroad, Wagon, Idle, Abandoned

S-6 IDENTIFICATION

County No. 361 Coal No. 6

Quad. 243 Part

County Randolph



Sec. 10  
 T. 4 N. S.  
 R. 5 W.  
 Index No. 0110 E6



LOCATION AND ELEVATION

Location: S side III. Cent (Incorrectly shown on N side Top map.) R. R.  
side R. R.

N side Highway No. 13 (State)

on top. map Location sheet **Map Files #14-87-40A**

Elevation: Method; 1. Est. ( ) ft.  
2. Inst. (kind Plane Table) 514.9 ft.

By Skinner NB 526 p55- Data sheet

DEPTH 602

Authority To coal 186 ft.

Authority Rail to rail \_\_\_\_\_ ft.

Top of coal above rail. (Est. Rule) \_\_\_\_\_ ft.

Mine Supt Says 200' Rail to rail! To coal 195 ft. *ok*

ALTITUDE OF TOP OF COAL

By estimated data \_\_\_\_\_

By instrumental data \_\_\_\_\_

324 ft.

Thickness

Max. in. Min. in. Aver. 72 in. 70 ✓

GEOLOGICAL DATA

Mine notes, date 1912 (Little) \_\_\_\_\_

Coop No. Pyr. inv. Coal Ash inv.

Ruey #3

CHEMICAL DATA

Analyses	Face	U. I.	B. M.	Others
Car		U. I.	B. M.	Others
Org. Sulf		U. I.	B. M.	Others
Ash fusion		U. I.	B. M.	Others
Ash anal.		U. I.	B. M.	Others
		U. I.	B. M.	Others

Classification

Misc. tests: Coking. Cleaning Boiler

Published descriptions:—

Railroad, Wagon, Idle, Abandoned

IDENTIFICATION

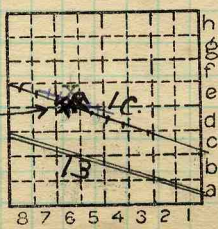
County No. 361

Coal No. 6

S-6

Quad. 243

County Randolph



Sec. 10  
T. 4 S.  
R. 5 W.  
Index No. 0110 E6

COAL MINE LOCATION AND DATA



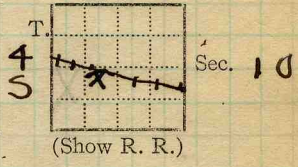
Town, **Coulterville** 514.9 Surface alt., 518  
 Local Authority, 191 Depth to coal, 524 ft.  
 Level: Auth., **Mine notes** 324 Alt. top coal, 186 ft.  
 Thickness: Av. 338 in.  
 Max. in., Min. 72 in.

Method, **RT. NBS26p55**

R. R., **I.C.**

R. 5 W

Location: authority, **Mine notes** 31  
**Coulterville Quad.**



*av. #3*

Operator

Mine Name or No.

1903 **West Side Coal Co.** # **West**

*Seased from Council Coal Mining Co.*

Successor to

Date

Succeeded by

**St. Louis Coal Co** **Florida**  
**Coulterville**

Date

Succeeded by

Date

**QV**

**PRODUCTION.**

							U. S. No.
19	About 600T daily						
'26	15	00					
'27	143	314					
'28	145	122					
'29							

**1930 #7**

Geol. Notes? **Yes** Coop. No.

Coal secs.? **Yes**

Analyses No.

**3**

Examined by

Ref.

Coal bed name: Local **7**

Survey No. **6**

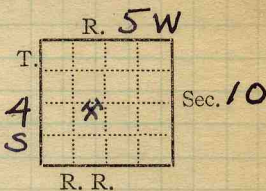
County **Randolph**

Index No. **0110.34**

**K.—ACTIVE SHIPPING OR LOCAL COAL MINE.**



Mine Name or No., **Council**  
 2 miles W from **Coulterville**  
 Operator, 191 **West Side Coal Mining Co**  
 Operator, 191



Entrance, **514.9** Shaft Elev., **514.9** ft. ( above,  
 ( below,  
 Depth to ~~bottom~~ coal, **191** ft. Alt. **324**  
**top** SURFACE DATA.

- A. Topography, **Gently rolling. Mild morainic** See  
 B. Surficial materials. (1) Character,  
 (2) Thickness, (3) Effect on mining and shaft-sinking, of former  
 drainage lines, underground water strata, etc.

**Reported to be a little water in the escape shaft from the surficial material. Of no great importance.**

- C. Outcrops, (1) Character, See  
 (2) Structure, See  
 (3) Fossil horizons, See  
 Collection No.,  
 (4) Evidences of subsidence, See  
 D. Note collection of mine maps, drill records and shaft logs.

See drill record sheet,

E. Notes on surrounding area,

See

---

Coal bed name: Local, **No. 7** Survey No. **6**   
 Collector, **Cady Sept 3, 1918**  
 Mine, **Crystal** Co. **Randolph** Index No. **0110**  
 L.—SURFACE SHEET (Geol.)





K. (5) Physical character of coal in benches, **Coal shows no unusual characteristics. Dull and glance coal as usual.**

(a) Relative hardness,

(b) Lustre,

(c) Fracture,

(d) Texture,

See

(6) Impurities in coal, other than bedded,

**Few vertical sulfur**

(a) Kind, **streaks**

(b) Position and persistence, **Not persistent**

(c) Rejected,

Ease of separation,

See

L. Floor: (1) Material, **Fire clay**

(2) Thickness,

(3) Variation,

(4) Note character, condition, tendency to heave, relation to undercutting commercial value.

See

(5) Clay sample No.

Location,

M. Stratigraphy,

(1) Fossiliferous horizons underground,

Collection No.

Location,

N. Notes on effect of deep drilling in coal mine areas.

See

Collector, **Cady** **Sept 3, 1918**  
 Mine, **Council** **Co. Randolph**  
 N.—UNDERGROUND SHEET (Geol.)

Coal: Survey No. 6

Index No. **0110**





Symbol	Description	Inches
<b>Room 1 off 1st south entry</b>		
<b>Roof: black slate</b>		
	1 Coal	19
	2 Sulphur (Average about 1/16)	19 1/4
C	3 Coal	12
	4 Mother coal	1 1/4
	5 Coal	10 1/2
	6 Mother coal	1 1/8
	7 Coal	19
	8 Sulphur and clay (1/4 - 1/2")	1 1/4
C	9 Coal	5 1/2
	10 Blue band	1
	11 Coal	11
		78 7/8
	<b>Floor: fireclay</b>	
C	#2 Is a fairly persistent impurity of platy pyrite rarely over 1/4" thick locally absent. General average thickness possibly 1/16"	
	#4 Also persistent band of impurity: in places mother coal in others sulphur	
	#6 Mother coal band generally present	
	BP. #7 Pyrite plate or clay; generally pyr. In places 2" thick; most important pyrite plate. Averages possibly 1/8 - 1/4" over all.	
XXV)	#10 Blue band, commonly contains little pyrite in streaks.	
	Total thickness of bed probably about 2 inches less than shown	

(Scale: 1 division = 3 inches).

Sample No.	Can No.	Lab. No.
Collector, Cady	Sept 3, 1918	Coal: Survey No. 6 <input type="checkbox"/>
Mine, Council	Co. Randolph	Index No. 0110



Symbol	Description	Inches
<b>Room 2 off old west entry, southside</b>		
	<b>Roof: rock</b>	
	1 Coal	14
C	2 Sulphur ( $\frac{1}{8}$ - $\frac{1}{4}$ " )	$14\frac{1}{4}$
	3 Coal	$17\frac{3}{4}$
	4 Sulphur lens	18
2	5 Coal	$30\frac{1}{2}$
C	6 Mothercoal and clay ( $\frac{1}{4}$ - $\frac{1}{2}$ " )	$30\frac{3}{4}$
4	7 Coal	$53\frac{3}{4}$
C	8 Bone	$54\frac{3}{4}$
	9 Coal	$58\frac{1}{4}$
6	10 Blue band	$60\frac{1}{4}$
	11 Coal	$71\frac{3}{4}$
C	<b>Floor: fire clay</b>	
		71 $\frac{3}{4}$
8		
C		
BB		
C		

(Scale: 1 division = 3 inches).

Sample No. \_\_\_\_\_ Can No. \_\_\_\_\_ Lab. No. \_\_\_\_\_  
 Collector, **Cady** Sept 3, 1918 Coal: Survey No. **6**   
 Mine, **Council** Co. **Randolph** Index No. **0110**  
**Q.—COAL SECTION SHEET.**

ILLINOIS COAL MINE NOTES

TOWN *Conterville* T. 45 R. 5W S. 2W 1/4 SW 1/4 *Randolph* CO.  
 COAL BED #6 DATE *June 17 '08* COLLECTOR *De Wolf, Udden*  
 OPERATOR *West mine coal co.,* MINE CONS. *of*  
 HEAD OFFICE *Conterville.*  
 CAPACITY MARKETS, FRT. *Underwood Coal & M. Co.*  
 ENTRANCE *Shaft 192'* ENGINES  
 CAGE *524* DRUM *USED IN GOOP. REPT. 1912.*

0110

SCREENS  
 STORAGE  
 VENTILATION  
 GAS, SOURCE  
 COAL THICKNESS, AV. *72"* MAX. MIN. ELE. *above sea 332* FT.

SECTION LOCATED

No.	In.	No.	In.
1		7	
2		8	
3		9	
4		10	
5		11	
6			TAPE

NOT SHIPPED NOT INCLUDED CAN SAMPLE

PHYSICAL PROPERTIES BY NOS.

ROOF *ab. 6"-15" ls. ls. has "foot left" 8"-1'*  
 FLOOR *for aldy 3'*  
 DIP  
 CLEAT

FAULTS, ETC.  
 MACHINES  
 HAULAGE  
 CARS  
 DRAINAGE  
 WORKING SYSTEM  
 ENTRIES, MAIN CROSS ROOMS  
 PILLARS, MAIN CROSS ROOM  
 DRAWN TIMBERS

Note also: Variation in coal, impurities, roof, structure.  
 Collect records, analyses, fossils. Note land values, etc.

*N.B. 140 p 14 N.B. 138 p 17.*

0110  
~~0110~~



Florida Mine (West Mine) St. Louis Coal Co  
 At one place along 5<sup>th</sup> S. NW entry  
 is a cut along entry showing

Black slate, 1 to 2 feet of white top  
 underlain by about 2 inches  
 of canneloid like coal lying  
 on the top of the No. 6 coal bed

Dip in Mine is toward SE. Toward Coulterville

Sample # 3, 1300' N, 100' W. E $\frac{1}{4}$  cor Sec 9

Sample 2 700' W, 1300 N E $\frac{1}{4}$  cor Sec 9

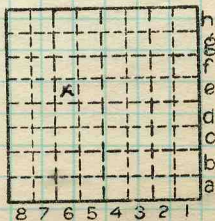
Sample 1 1800' E cent. Sec. 10.

Samples collected by M<sup>c</sup>Cabel Payne

By G. ITC. Date 2/23/40

Quad. Coulterville Part

County Randolph



Sec. 10

T. 4 S.

R. 5 W.

Index No.

0140



Florida Mine (West Mine) St. Louis Coal. Co  
Main N-; Room 3, 5<sup>th</sup> S. NW.

Here is a place where the caprock  
has fallen for a height of 4 to 5 feet  
showing the ~~ed~~ broken edge of the  
rock. The limestone is a nodular  
argillaceous rock probably having  
very little arch-arching strength  
Mr. Day, (night boss - formerly Nashville)  
~~has~~ states the rock must be closely  
timbered - and even then tends to fall  
without much warning - The rock seems to  
consist of nodules of 1 - 4 - 8 inches  
across embedded in calc. shale - Its  
lack of strength is obvious from its  
physical appearance Photo.

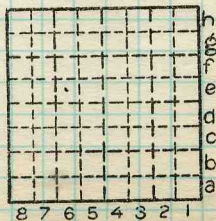
Vaughen, Payne, Schopf, McCabe

By GHC

Date 2/23/40

Quad. Coulterville Part

County Randolph



Sec. 10

N.

T. 4 S.

E.

R. 5 W.

Index No.

0110



## Florida - (West) Mine - St. Louis Coal Co.

The coal balls are found in the top bench of the No 6 coal bed. in a zone 1 to 2 feet thick. The coal-balls appear to be restricted to the top bench which thickens somewhat where they are present. - Pictures

The roof appears to be poorly bedded bastard limestone

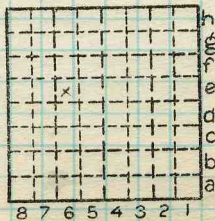
The occurrence is in 4 and 5th rooms off 7th North off Main East - nearly at present eastern edge of the mine

With Schopf, McCabe, Payne & Vaughan

By G.H.C. Date Feb. 23/40

Quad. Coulterville Part

County Randolph



Sec. 10  
N.  
T. 4 S.  
E.  
R. 5 W.  
Index No.

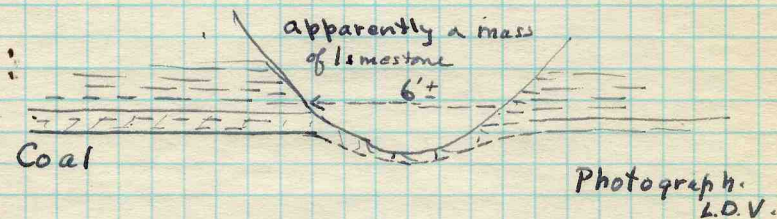
0110



# Florida (West) Mine St Louis Coal G

Along Main North - at first door.

Exposure of roll.



Here the coal is overlain by about 8" of a Canneloid shale - not the bk roof slate but part of the coal bed. This is overlain by gray shale - (soapstone or white top -

Cutting down through to the ls. roll - about

6' across - and separated from shale by slick surface. Apparently represents a

knob of limestone - it has crushed down into

the top of the coal breaking up the bk cannel coal and the top 1 or 2 inches of the bed

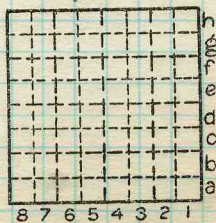
The strat. relation of ls & shale not apparent

(Schopf, Payne I

By G.I.C Date 2/23/40

Quad. Coulterville Part

County. Randolph



Sec. 10  
N.  
T. 4 S.  
E.  
R. 5 W.  
Index No.

0110



Florida. (West Mine) St. Louis Coal Co

Section. ~~North~~<sup>South</sup> side of shaft at shaft bottom.

- Roof: Shale, gray, calc, marine  
Jointed. NE.SW 3"
- : Shale, gray, calc - 33"  
almost an imp. ls -
- Shale, dk gr. to bk shale - not slate 12"
- ls, impure<sup>very</sup> argil. nodular. 38"
- Coal.

Here the caprock terrin ls. rests immediately on the coal. So impure does it appear that we first thought it was the bastard ls. However, its lower surface is knobby, and about 150 ft. in main entry find bk st. comes in between "caprock" and coal

The nodular impure - character of caprock is particularly noteworthy. It lacks usual solid compact character

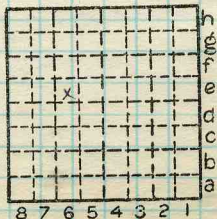
In places the roof is like it is at shaft bottom - in other places black slate is present under caprock - and in other places gray shale + bastard ls. lies between coal and black shale

(McCabe Payne Schopf. Vauclain)

By G.H.C. Date Feb 20/40

Quad. Coulterville Part

County Randolph



Sec. 10  
T. 4 N.  
E.  
R. 5 W.  
Index No.

0110





# Florida (West) Mine St-Louis Coal Co

Room 7- 7<sup>th</sup> North off Main E

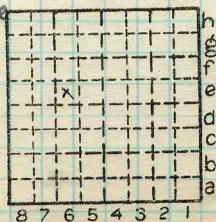
Here a ledge of bastard limestone (dark carb. calc. fossilif. earthy rock) appears to wedge in below the cap rock. Both wedge and cap rock are much fractured and hard to hold. The wedge attains a thickness of 2 $\pm$  feet. Cap rock is a very impure argillaceous limestone not a solid limestone as at Nashville. Slabby and very argillaceous.

With McCabe, Schopf, Vaughn, Pasno

By G. HC Date Feb 23/40

Quad. Coulterville Part

County Randolph



Sec.   
 T. 4 S.   
 E.   
 R. 5 W.   
 Index No.   
 0110





Operator, *St. Louis Coal Co* Date *2-23-40*  
 Mine, *Florida (West Side)* Sec. T. R.  
 Location in mine, *End Main E*

GRAPHIC SECTION		DESCRIPTION OF SECTION (AT POINT SAMPLED)	
In.	No.	No. (Note character and thickness of roof)	Inches
	1.	<i>Black slate roof</i>	
	2	<i>Cannelon coal left in roof</i>	<i>5</i>
	3	<i>Silky top coal</i>	<i>11</i>
	4	<i>Banded bright coal</i>	<i>14</i>
	5	<i>Clay parting</i>	<i>3/4</i>
	6	<i>Banded bright coal</i>	<i>16</i>
	7	<i>Bone</i>	<i>1</i>
	8	<i>Banded bright coal</i>	<i>19</i>
	9	<i>Blue band</i>	<i>2</i>
	10	<i>Banded bottom coal</i>	<i>10</i>
	11	<i>Underclay</i>	<i>12</i>
(Note character and thickness of floor)			
Total thickness of coal.			
Condition, <i>dry</i>		Time, hr. <i>30</i> min.	
Wt. Gross, <i>50</i> lbs.		Net, lbs.	
What Nos. shipped by Co.?			
Excluded from sample: No. <i>5 &amp; 9</i>			
Sample represents		in.	tons.
Impurities? How do they occur?			

(1 division = 3 in.)

*Bands and lenses*

Sample No. Can No. *A605* Lab. No.  
 Collector, *L.C. McCabe, J.N. Farne* Coal: Survey No. *6*   
 Mine, *St. Louis Coal Co.* Co. *Wash.* Index No. *0110-06*

R.—COAL SAMPLE SHEET.



Operator, *St. Louis Coal Co.*  
 Mine, *Florida (West Side)*  
 Location in mine, *5th So. NW.*

Date *2/23/40*  
 Sec. T. R.

GRAPHIC SECTION		DESCRIPTION OF SECTION (AT POINT SAMPLED)		
In.	No.	No.	(Note character and thickness of roof)	Inches
	1		<i>Knobby ls roof</i>	
	2		<i>"Chert"</i>	<i>6</i>
	3		<i>Silky coal</i>	<i>6 1/2</i>
	4		<i>Banded</i>	<i>20</i>
	5		<i>Fusain</i>	<i>1/4</i>
	6		<i>Coal</i>	<i>5 1/2</i>
	7		<i>Pyrite</i>	<i>1/8</i>
	8		<i>Coal</i>	<i>30</i>
	9		<i>Pyrite</i>	<i>1/4</i>
	10		<i>Coal</i>	<i>4</i>
	11		<i>Blue band</i>	<i>3/4</i>
	12		<i>Coal</i>	<i>7</i>
	13		<i>Coal</i>	<i>3</i>
	14		<i>Underclay</i>	
(Note character and thickness of floor)				
Total thickness of coal.				
Condition,		Time,		hr. min.
Wt. Gross, lbs.		Net, lbs.		
What Nos. shipped by Co.?				
Excluded from sample: No. <i>1, 2, 3, 11 &amp; 13</i>				
Sample represents		in.		tons.
Impurities? How do they occur?				

(1 division = 3 in.)

Sample No. \_\_\_\_\_ Can No. *607* Lab. No. \_\_\_\_\_  
 Collector *L. C. McCabe, J. N. Payne* Coal: Survey No. *6*  
 Mine, *Florida* Co. *Washington* Index No. *4110-56*



Operator,

Date

2/23/40

Mine, Florida (West Side) Sec.

T.

R.

Location in mine,

#1, 59 OFF NW

GRAPHIC SECTION		DESCRIPTION OF SECTION (AT POINT SAMPLED)		
In.	No.	No.	(Note character and thickness of roof)	Inches
	1		Ls "clod" roof	
	2		Silky top coal	10
	3		Bright banded coal	13 1/2
	4		clay parting	1/2
	5		Banded bright coal	8
	6		Pyrite parting	1/4
	7		Banded bright coal	21
	8		Pyrite parting	1/2
	9		Banded bright coal	4
	10		Blue band	3/4
	11		Bottom coal	10
	12		Underclay	
(Note character and thickness of floor)				
Total thickness of coal.				
Condition,		Time,	hr.	min.
Wt. Gross,	lbs.	Net,	lbs.	
What Nos. shipped by Co.?				
Excluded from sample: No. 8 + 10				
Sample represents		in.	tons.	
Impurities? How do they occur?				

(1 division = 3 in.)

Sample No.

Can No.

611

Lab. No.

Collector, L. C. McCabe, J. M. Payne Coal: Survey No. 6 

Mine, Florida

Co. Washington

Index No. 0118-D-6

R.—COAL SAMPLE SHEET.