

Illinois State Geological Survey

.67g

(0603.27½)

August 14, 1931

Old Hickory mine along bluff road, where coal has been mined since about 1810. And coal has been mined from both Herrin and Harrisburg veins.

Loess and drift not studied

Limestone, massive, fossiliferous, with
Fusulinas (Brereton) 3'4"

Clod, greenish gray, calcareous 4"

Clay or shale, dark gray, 4-5" at entry,
changing to 2'2'6" of black slate back in
in mine

Section of No. 6 coal.

Coal 10"

Clay, gray 1/4"

Coal 3-1/4" (base of "blacksmith coal")

Clay, gray 1/4"; 9" parting of miners.

Coal 3"

Fusain 1/4"

Coal 2-1/2"

Fusain 1/8"

Coal 1" (base of "9" inch coal)

Clay 3/4" (upper drift parting)

Fusain 1/4"

Coal 3-1/2"

Fusain 1/4"

Coal 1/2"

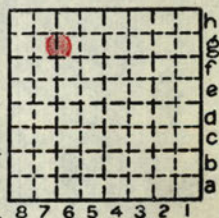
Fusain 3/16"

Coal 1/2"

Fusain 1/8"

Coal 3-1/2"

(cont. next page)



By H. R. Wanless _____ Date 1931

Quadrangle St. Louis

County St. Clair _____ Sec. 3 T. 1N R. 9W

Illinois State Geological Survey

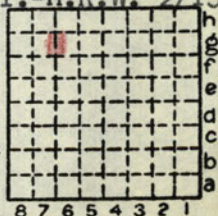
p. 2 .67g
(0603.27½) cont.

- Fusain 1/4"
- Coal 4" (base of "drift coal")
- Clay, black and fusain, often with pyrite 1/2"
(lower drift parting)
- Coal 1-1/2" reported rather sooty
- Fusain 1/4" with pyrite (persistent over mines
in this vicinity)
- Coal 4" (base of block coal)
- Clay, dark gray with pyrite 1-1½" (blue band)
- Coal 4"
- Pyrite band 1/4" (persistent through St. Clair
County)
- Coal 7-1/2"
- Pyrite (black jack) 0-1"
- Coal 7"
- Pyrite 1/8"
- Coal 3-1/4" (base of bottom coal)
- Total coal 6'5-3/4"
- Clay, light gray, noncalcareous 1'6"
- Clay, medium gray, calcareous 9"
- Limestone, medium gray, rather irregular, dense
to crystalline, crinoidal, with marine fossils
(probably St. David limestone) reported back
in mines to extend up to base of coal in
places, and to be at least 10-12' thick in
places, (Fault with 116" displacement in
No. 6 coal at mine entry)

SPEC. 110

(Roof ls. of SA coal of So. Ill. - H.R.W. 2/15/40)

Concealed interval to top of
section at entry lower on hill
(cont. next page)



By H. R. Wanless Date 1931

Quadrangle St. Louis

County St. Clair Sec. 3 T. 1N R. 9W

Illinois State Geological Survey

p. 3.67g
(0603.27½) cont.

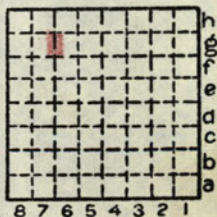
slope in Harrisburg coal 4'3"
 Shale, yellow gray, poorly bedded 1'6", calcareous, with abundant calcareous nodules; no fossils seen
 Limestone, light yellow gray, weathering rusty, massive in upper part, lower 2' quite shaly fossiliferous, with *Productus cora*, crinoid stems and *Mesolobus euampygus* seen; some black limestone pebbles (Hanover limestone) 6'6"
 (St. David ls - H.R.W. 2/15/40)
 SPEC. 109
 Shale, gray, soft, with small hard dark gray round concretions 8"
 Shale, dark gray to black, hard, fissile; weathered at outcrops, with *Lingula* 1'5"
 Coal, measured 2'10", cut into toward east and thinner in that direction to 2' reported to be near maximum at entry. (Harrisburg coal)
 Black false bottom 1"- 0 #5
 Underclay, light gray, soft, noncalcareous 2'1"
 Clay, medium bluish gray, slightly calcareous 2-3" seen
 Interval concealed 22'
 At base of coal tipple, near level of State Route 157
 Sandstone, yellow gray, soft, noncalcareous 2' seen (probably Pleasantview sandstone)
 Also fragments of olive to blue gray micaceous shale (Purington) not seen in place

(cont. next page)

By H. R. Wanless Date 1931

Quadrangle St. Louis

County St. Clair Sec. 3 T. 1N R. 9W



Illinois State Geological Survey

p. 4.67g
(0603.27½) cont. H.R.W.

Miner reports that in vicinity of mine above
Brereton limestone, the following beds occur,
from top down

Limestone, hard (Jamestown)
Coal 2" (Jamestown)
Clay, gray 3'
Brereton limestone

(0603. 7g) J.M.W.
1927

Near center NW/4 section 3.

Coal mine Mississippi River bluffs.

Cap limestone of the coal contains many *Fusulinas*
and not much else.

Weller's St. Clair County fossil collection #6.

By H. R. Wanless Date 1931
J.M.Weller 1927

Quadrangle St. Louis

County St. Clair Sec. 3 T. 1N R. 9W

