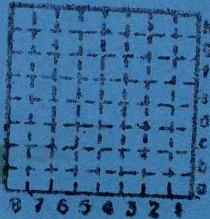


J. J. Track Mining Co.
Brown Bros. Mine No. 3

Brown Bros. Mine No. 3
(strip)
Mine Index No. 1009
Coal Report No. L-131

Saline County
Rudement Quad (7.5 min)



Sec 14
T 10 N.
R. 7 E.
Index No.

J.J. Track Mng. Co., Brown Bros. Mine No. 3

PRODUCTION FIGURES

Year Tonnage

1985 37,327

1986 54,718

1987 34,137

1988 idle

1988, May

Property transferred to:
Garden Valley Resources
P.O. Box 38
Providence, Ky. 42450

(telephone conversation with Mr Clayton
Moseley of that company.
Feb 22, 1991) MHB.

Visit to J. J. Track
Brown Bros. No. 3 Mine
Surface Mine in Davis, De Koven and Colchester (No. 2)
Coals, NE/4 SE/4 (?) Sec. 14, T.10S., R.7E., Saline
Co., IL
Tuesday, September 17, 1985
Notes by D. K. Lumm, with R. J. Jacobson.

This surface mine was begun in January 1985 and began producing in May 1985. No production statistics are available as of yet.

Our purpose for the visit is to sample the coals for analytical chemical tests. The Davis Coal has not been exposed yet, so we were restricted to sampling the DeKoven and Colchester Coals. We did not see a stockpile nor a tipple site.

The mine is a box cut just east of the abandoned J W Coal Co. workings. The box cut strikes N 15-20 W and is about 40' deep to the DeKoven Coal; the highwall is advancing to the east and the pit is lengthening to the south.

The DeKoven Coal measures 2.8' thick and has a thin (0.01'-0.04') claystone parting 1-4" above the base of the coal. There is another parting 1.1' above the base of the coal and 0.02-0.03' thick; this is mostly pyrite. The overall appearance of the coal is dull banded. The DeKoven coal is overlain by a dark grey micaceous claystone.

Attitude of Coal: N 13 W, 9 E
Face cleat: N 60 E, N 71 E
Butt cleat: N 16 W, N 28 W

The interburden between the DeKoven and the Colchester is about 25'. This interval can be summarized as medium grey shale interbedded with siltstone that coarsens upward to medium bedded sandstone.

The Colchester (No. 2) Coal measures 0.35-0.4' and is normally bright banded. Mr. Brown calls it a "peacock coal" because of its colorful reflectance of pyrite in the sunlight. The coal is overlain by a thin black shale with abundant brachiopod (?) fragments - the texture of which was near to a bastard limestone.

We did not have time to examine the highwall for structural discontinuities. In fact, our real purpose for the visit was to have Mr. Brown authorize a Survey coal test boring for the COGEOMAP contract on the abandoned No. 2 Mine property.

D.K.L.

Samples: DeKoven = C 23910

Colchester = C 23911

J. J. Track Mining Company
Brown Bros. Mine No. 3

Saline County

Surface mine - Davis, Dekoven, and Colchester (No. 2) Coals.

Notes by D. K. Lumm

Field partner: S. K. Danner

July 22, 1986

Purpose of visit is to collect channel samples of the Davis and Dekoven Coals for the project USGS 86. I met briefly with Mr. Philip Brown, superintendent of the mine. The pit is oriented in a north-south indulating fashion, the highwall is advancing to the east following the easterly dip of the coals. The mine layout is adjacent to the abandoned J&W Mine which contour mined the coals on and to the east.

Equipment on site includes a Manitowoc 4600 dragline having a 140' boom and 16 yd. bucket, a Manitowoc 4500 dragline having a 120' boom and a 14 yd bucket, and a Caterpillar end loader.

J. J. Track is negotiating a trade for 160 acres owned by the Shawnee National Forest located south of their mine limit permit. This would give J. J. Track additional reserves in exchange for forested land on Cave Hill which is desired by the National Forest.

The Colchester (No. 2) Coal is 9" thick and is underlain by about 50' of sandstone and shale to the Dekoven Coal, which is up to 3' thick and underlain by 25'-27' of gray to brownish gray shale to the top of the Davis Coal. The Davis Coal measures up to 4' thick.

Channel Sample of Dekoven Coal

Lab No. C25227

Location: 1600' from SL, 1250' from WL, Sec. 14, T.10S., R.7E., Saline County

- 0.57' Roof Shale: very dark gray, mostly fissile, slightly silty, smooth, with sulfur streaks, grades into medium brownish gray silty shale above. Excluded from sample.
- 0.35' Coal: (Dekoven): normally bright banded (NBB), predominately clarain - 60% with 35% vitrain, well developed cleat, with minor calcite and kaolinite on cleat faces.
- 0.02' Fusain:
- 0.31' coal: NBB, predominately clarain but with bright luster.
- 0.85' coal: NBB, similar to above.
- 0.05' Shale: dark gray, partly pyritized
- 0.17' Coal: NBB, 80% clarain
- 0.15' Fusain:
- 0.43' Coal: NBB, predominately clarain, some vitrain.
- 0.08' Pyrite: nodule (maximum thickness indicated)
- 0.33' Coal: NBB, 60% - 70% vitrain
- 1.94' Floor: claystone, gray, silty, moderately hard, well indurated.
- END SECTION Total coal thickness = 2.74'

Channel Sample of Davis Coal

Lab No. C25228

Location: 1700' from SL, 1250' from WL, Sec. 14, T.10S.,
R.7E., Saline County

Description:

Roof Shale: very dark gray, smooth, slightly
fissile, moderately hard.

0.015' -Pyrite, discontinuous, laminated, hard, yellow
0.08' to brassy

0.62' Coal (Davis), normally bright banded (NBB), black,
slightly weathered, poor cleat development,
very vitreous, little vitrain, very thin
banded, predominately clarain.

0.68' Coal: NBB, pyritic throughout, pyrite developed
on cleat faces.

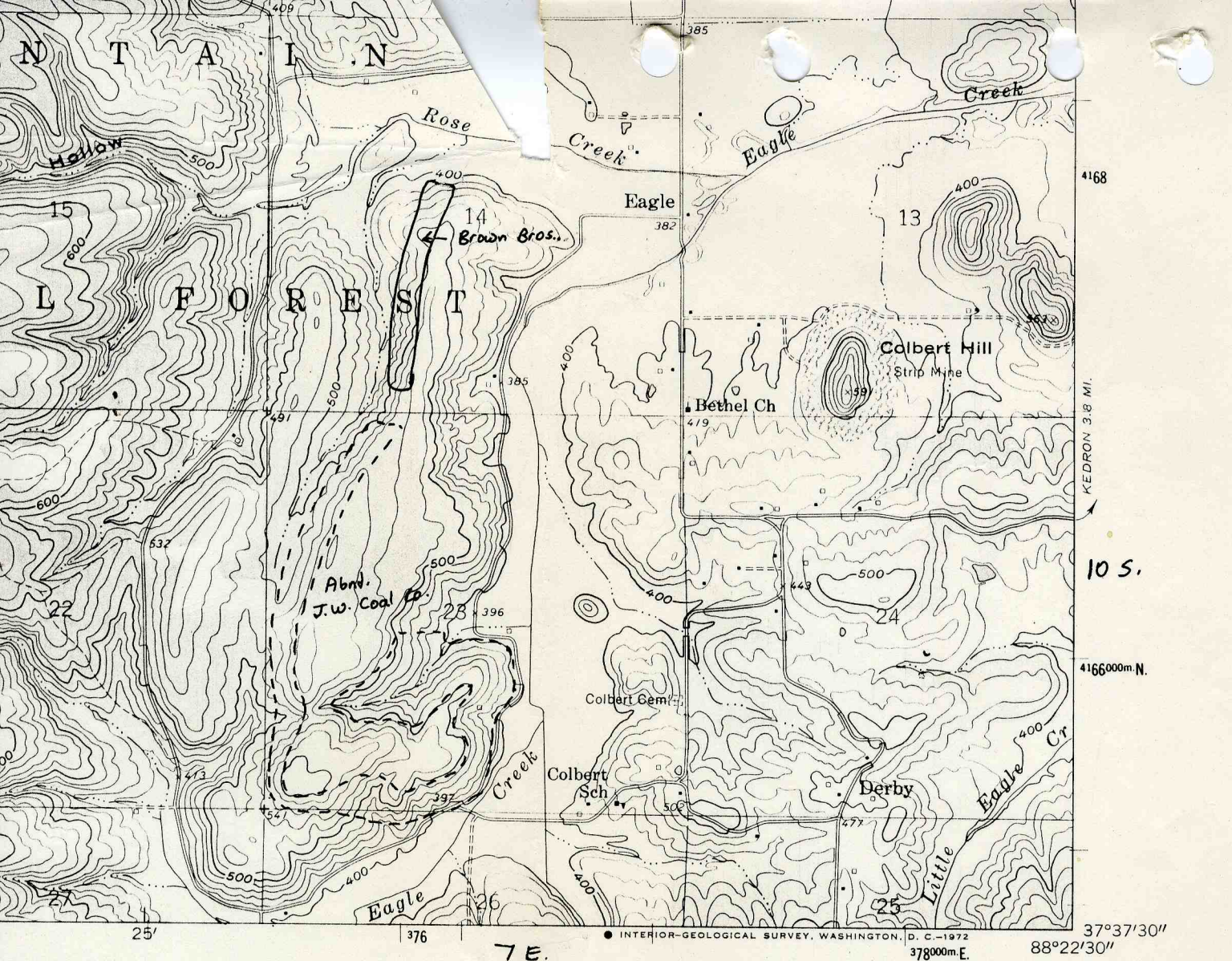
1.38' Coal: NBB, vitreous luster, poor cleat development

0.06' pyrite lense, discontinuous

1.05' Coal, NBB, vitreous luster, poor cleat development

Floor: Claystone, dark grayish brown, very firm,
some small slickensides, abundant carbon-
aceous debris, horizontally inclined and
vertical carbonaceous rootlets.

END SECTION Total coal thickness = 3.79'



1 MILE
FEET



● INTERIOR-GEOLOGICAL SURVEY, WASHINGTON, D. C. - 1972
378000m.E. 37°37'30" 88°22'30"

ROAD CLASSIFICATION
 Heavy-duty ————— Light-duty - - - - -
 Unimproved dirt - - - - -
 ○ State Route

RUDEMENT, ILL.
 NW/4 EQUALITY 15' QUADRANGLE
 N3737.5—W8822.5/7.5

(KARBERS RIDGE)
 3359 11 SE

J. J. Track - Brown Bros. Excavating. John Nelson.
June 6, 1988.

Mine has been idle for about 1 year, and the mining company evidently has gone out of business. A company from Kentucky is dismantling the dragline. The pit is unreclaimed and accessible. The Davis and Dekoven Coals were mined, and the Colchester Coal is visible in the highwall. Most of the pit is not in good condition for detailed study because of steep, crumbling highwalls, with few places to reach higher strata.

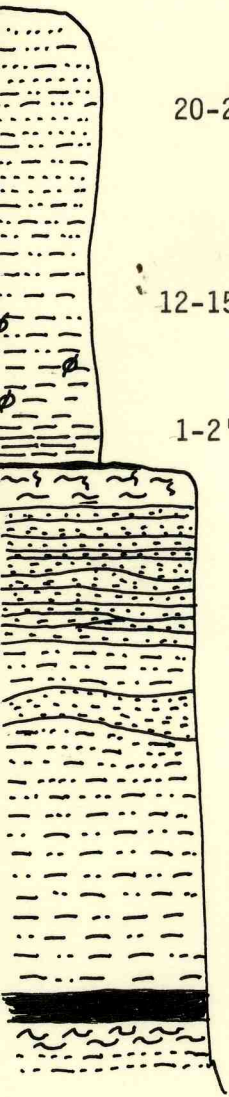
In south part of it the Davis Coal is covered and the Dekoven visible only at the extreme south end and near the incline, in the middle of the pit. It is *weathered* badly with white and yellow crusts of sulphates. The coal dips about 7° to the east.

Near the middle of the pit is anormal fault trending N.30°W/65°SW, with about 3 feet of throw. It displaces the Colchester Coal and higher strata; below the Colchester the fault is covered by talus. Several other fractures with similar orientation noted along this section of highwall.

Dekoven to Colchester interval estimated at 40 feet. Dark gray silty shale at the base grades upward to medium gray siltstone, then thin to medium-bedded sandstone. Sandstone in the spoils, possibly from this interval, contains current and oscillation ripples, burrows, and a variety of sole marks. One burrow about 1/8" wide is horizontal and tightly sinuous.

Strata best examined near north end of pit (north end of bedrock hills). See estimated section. Not much lateral variability evident, although the sandstone between Dekoven and Colchester Coals is somewhat lenticular.

Estimated section, north end of pit



- 20-25' Siltstone and sandstone, interbedded -
siltst. med-dk gray, micaceous, carbon-
aceous, poorly to moderately laminated;
sandst. lt gry, very fine, very mica-
ceous, beds to 1½ ft. thick; load
casts, ball and pillow, ripple marks.
Grades into:
- 12-15' Shale, dk gry, finely silty, siderite
bands & lenses, well laminated; occas.
sandstone beds near top. Coarse plant
debris on bedding planes.
- 1-2' Mecca Quarry Shale black, hard, moder-
ately mostly covered.
- 0.5' Colchester Coal, pyritic; disturbed
by mining.
- 2' Claystone, gray, rooted.
- 10' Sandstone, lt gry, very fine, very
micaceous, feldspathic, argil.;
irrg. beds 2-12" thick.
- 3-4' Siltstone/ss, lt-med gry, irregularly
interlaminated
- 2-5' Ss lt gry, f.g., coarse mica, single
massive bed.
- 20' Siltstone, lt gray near top, with
interbeds of sandstone. Below dk
gray, poorly laminated, finely
micaceous, slightly sideritic,
coarsens upward.
- 3' Dekoven Coal pyritic, weathered.
- 2' Claystone
- 3'+ Sandstone, lenticular bedding.