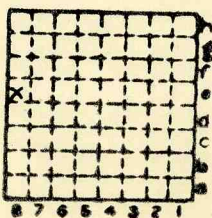




Form 180

N. WILMINGTON CC



Sec. 24
 T. 33 N.
 R. 5 E.
 Index No.

↓ Mine index 2708



Mine originally operated by: (1)

SMITH & LETSON
SENAKA

Date 1893

Original name or number:

Illinois Coal Report _____ p.

LATER OPERATORS

Date	Operator	Name or No.
2 1893	STANDARD COAL Co	
3 1903	Ab'd'a'd	
4 1903	N. Wilmington C. Co	C. Co
5 1907	Ab'd'a'd	
6		
7		
8		
9		
10		
11		
12		
13		
14		

* Also owners # See ownership sheet

Railroad, Wagon, Idle, Abandoned

IDENTIFICATION

County No.

Coal No.

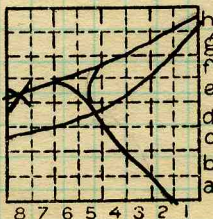
Quad.

60 60

Part 8.

County

LASALLE



Sec. 24.

T. 33 N.

R. 5 E.

Index No.

2024.

COAL MINE OPERATOR