



Form 180

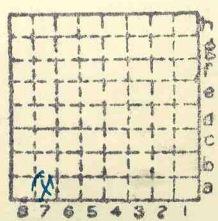
R - F

HERRIN

Maxima CC

S 8

249



Sec. 26  
 T. 3 <sup>N</sup>S.  
 R. 6 <sup>E</sup>W.  
 Index No.

✓ Mine Index



Mine originally operated by: (1)

Date

JOHNSON COAL CO.

1888

Original name or number: "OKAY"

Illinois Coal Report

p.

MORGAN

LATER OPERATORS

Date	Operator	Name or No.
2 1913.	OKAY COAL CO.	"OKAY"
3 1918.	EGYPTIAN COAL CO.	"
4 1928.	OKAY COAL CO.	"
5	Marissa Coal Co.	O.K.
6 1942(Aug)	Smith Coal Co	Okay
7		
8 1947 (may)	MARISSA COAL CO.	Okay
9		
10		
11		
12		
13		
14	opened 1896 (from Ann Rept - Dept M & M '48)	
✓	(1948)	

\* Also owners

#See ownership sheet

1948  
OK

Railroad, Wagon, Idle, Abandoned Shaft

I.C.R.R.

IDENTIFICATION

County No. 247

Coal No.

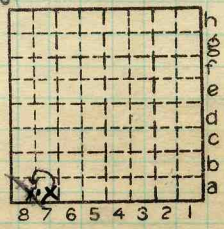
□ 6

Quad. Coulterville

Part 3

1948 7'0"

County ST CLAIR



Sec. 26

T. 3 S.

R. 6 W.

Index No.

COAL MINE OPERATOR



( Sheets ) COAL PRODUCTION ( Sheet )

Period							Tons	
No.	Mo.	Day	Year	Mo.	Day	Year		
	1	1	34	12	31	34	63	660
	1	1	35	12	31	35	71	326 #17
8	1	1	1936	12	31	1936	29	094
8	1	1	1938	12	31	1937	13	257
S-8	1	1	1938	12	31	1938	14	438
						1939	15	594
						1940	16	411
S-8	1	1	1941	12	31	1941	20	847
<del>S-8</del>	<del>1</del>	<del>1</del>	<del>1942</del>	<del>12</del>	<del>31</del>	<del>1941</del>		
88	1	1	1942-1-31			1942	3	594
	8	1	1942-12-31			1942	28	136
						1943	71	039
						1944	109	907
						1945	121	397
						1946	125	211
						1947	36	111
						1948	62	528

SUMMARIES

No.	to	No.		
1888	-	1933	1,770	566

Railroad, Wagon, Idle, Abandoned

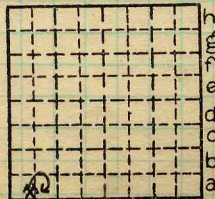
IDENTIFICATION

I.C.R.R.  
S-8

County No. 247 Coal No. 6.

Quad. Coulterville Part

County ST CLAIR



Sec. 26

T. 3 S.

R. 6 W.

Index No.

COAL MINE—PRODUCTION

1726-80 47



LOCATION AND ELEVATION

Location: NE side I.C. R. R. side R. R. side Highway No.

on top. map 252 Location sheet

Elevation: Method, 1. Est. ( ) ft. 480 2. Inst. (kind ) ft.

By Monroe Data sheet

DEPTH

Authority Monroe To coal 120 ft. Authority Rail to rail ft. Top of coal above rail. (Est. Rule) ft. To coal 116 ft.

ALTITUDE OF TOP OF COAL

By estimated data By instrumental data 360 ft.

Thickness

Max. 96 in. Min. 72 in. Aver. 78 in. 90

GEOLOGICAL DATA

Mine notes, date 1908 1921

Coop No. Pyr. inv. Coal Ash inv.

CHEMICAL DATA

Table with 4 columns: Analyses Face, U. I., B. M., Others. Rows include Car, Org. Sulf, Ash fusion, Ash anal.

Classification

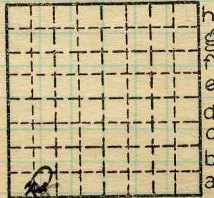
Misc. tests: Coking. Cleaning Boiler

Published descriptions:—

Railroad, Wagon, Idle, Abandoned

IDENTIFICATION

County No. 247 Coal No. 6 Part 3 Quad. Coulterville County St Clair



Sec. 26 T. 3 S. R. 6 W. Index No.

COAL MINE LOCATION AND DATA



1726  
1735a

COAL MINE NOTES.

COUNTY *St. Clair*

TOWN *Dec. 17.*

MAP No. ~~226~~

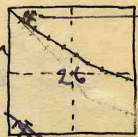
T. *35*

R. *6W* O.K. Coal Co. 501 Mermodt. Jaccard Bldg. St. Louis, Mo.

S. ~~26~~ r. 35 NW <sup>4</sup> / NW <sup>4</sup> according to <sup>Udden</sup> about Cady's

OPERATOR *Johnson Coal Co.*

N.B. + Letter from Co. show it to be in sec. 26



OFFICE *Union Trust Bldg St. Louis.*

MINE *O-K.*

TIPPLE *Wood.*

ENGINES *single geared cylinder 10"x20"*

BOILERS

DRUM *Wooden 5 1/2'*

SHAFT *6 1/2 x 13*

CAGE *H & H self klemmp.*

HAULAGE *Electric 6 ton motor in mine Wholes in Cross Cuts.*

CARS *Wood 2 tons capacity*

VENTILATION *Fan 10' blades 4'*

DRAINAGE *Water pumped out in 2 hrs.*

SPRINKLING

WORKING SYSTEM *Room + Pillar*

MINING METHODS *Shot off solid*

*Hand mined.*

*electric lights*

*Powder single F+C.*

SIZE OF ENTRIES—MAIN *21'* CROSS *21'* ROOM *30'x33'* NECK

SIZE OF PILLARS—MAIN CROSS ROOM

SHAFT CHAIN BARRIER

AMOUNT OF TIMBERING *about 4' apart.* SIZE

PROPORTION OF COAL UTILIZED

AMOUNT AND CHARACTER OF WASTE

ACREAGE OF COAL MINED *West.*  
ACREAGE OF COAL REMAINING *NE + S.E. working.*

PROPORTION OF MINE RUN AND SCREENED COAL

METHOD OF SIZING *Shaker screen.*

SIZES *1/2", 3", 1", 2", 6"*

PER CENT *about 33% over 2" screen*

RESCREENED *10 for 4.*  
*1/4" + 3/4" round*

PROPORTION AND SIZE OF WASHED COAL

DAILY OUTPUT *500 tons*

UTILIZATION *Steam, some domestic*

MARKETS *St. Louis.*

FREIGHT RATES *42¢ E. St. Louis.*

SELLING PRICES AT MINE

GEN'L COAL REPT. 247

COAL LAND OWNED LEASED *all.* HELD IN FEE

COST OF LAND OWNED LEASED HELD IN FEE

ADDITIONAL NOTES *Storage bins for screens 2 + 20 tons*

~~246-2139a~~  
1735a  
1726  
8a



COAL MINE NOTES.  
CONTINUED.

1735a

OPERATOR *Johnson Coal Co.* MINE *O.K.*  
 ENTRANCE *Shaft.* NAME OF COAL BED *#6.*  
 ELEVATION *450 (Est. Wolfe map)* THICKNESS OF COAL *84"*  
 DEPTH TO FLOOR *125.* MAX. MIN. AV.  
 ALTITUDE OF COAL  
 LOCATION OF SECTION *Main South Entry.*

No.	SECTION.	In.
1	<i>Rock many feet.</i>	
2	<i>slate 2'4"</i>	
3	<i>Coal</i>	<i>59</i>
4	<i>Blue Band</i>	<i>1</i>
5	<i>Coal</i>	<i>22</i>
6	<i>fireclay several feet.</i>	
7		
8		
9		
10		
11		
12		
Tape		Total

SAMPLE No. *G34.*  
 CAN No.  
 CONDITION  
 GROSS WEIGHT *59"*  
 TIME EXPOSED  
 NOT SHIPPED *1"*  
*22"*  
~~NOT INCLUDED~~ *3, 5.*



PHYSICAL PROPERTIES BY NUMBERS

*#3 sometimes has a variable thin slate*

ROOF *Lo. many feet. slate 0'-5'. slate sometimes contains flats.*  
 FLOOR

DIP *1726 - Cady's map no 3.*  
*1735 - Udden - W.B. 138. p49*

FAULTS, ETC.

GAS

COLLECTOR *Groat*

REFERENCE *AB7 P38.*

DATE *5-11-06*

Additional Notes "

*2126*

*1735a*

*1726*



COAL MINE NOTES.

CONTINUED

1735a

OPERATOR *Johnson Coal Co* MINE *OK*  
 ENTRANCE *Shaft* NAME OF COAL BED *#6*  
 ELEVATION THICKNESS OF COAL *84"*  
 DEPTH TO FLOOR *125* MAX. MIN. AV.  
 ALTITUDE OF COAL  
 LOCATION OF SECTION

No. SECTION.

No.	SECTION.	In.
1	<i>Slate</i>	<i>8'</i>
2	<i>Coal</i>	<i>16</i>
3	<i>Mother of Coal</i>	<i>1/8 to 1/4</i>
4	<i>Coal</i>	<i>14</i>
5	<i>Mother of Coal</i>	<i>1/8 to 1/4</i>
6	<i>Coal</i>	<i>14</i>
7	<i>Sulphur</i>	<i>1/4 to 1/2</i>
8	<i>Coal</i>	<i>18</i>
9	<i>Blue Band</i>	<i>1</i>
10	<i>Coal</i>	<i>18</i>
11	<i>Black Jack</i>	<i>0" to 1"</i>
12	<i>Coal</i>	<i>9"</i>
<i>Part Fine Clay.</i>		<i>Total</i>

SAMPLE No.

CAN No.

CONDITION

GROSS WEIGHT

TIME EXPOSED

NOT SHIPPED

NOT INCLUDED

SECTION

Feet



PHYSICAL PROPERTIES BY NUMBERS

*Top 16" coal very hard & bright. Breaks into large pieces.*  
*#4 coal 14" a softer coal, breaking into small pieces. Known as mine <sup>with</sup> coal.*  
*#6 is known as drift coal, mostly sulphur and harder to drill. Dull luster much similar to 9 inch coal.*

ROOF *Roof slates 4' to 5'. ls above 25'± soapstone 0'-4'*

FLOOR *Fire clay 3" to 1 1/2" thin ls.±*

DIP *N.E.*

FAULTS, ETC.

GAS

COLLECTOR *Udden*

REFERENCE *N.B. 138 P 38*

DATE *6-22-08*

*Additional Notes "*

*" " " "*

*1726*

*1735a*  
~~*1735a*~~  
~~*2126*~~



COAL MINE NOTES.

1735a

OPERATOR

*Johnson Coal Co.*

MINE *O.K.*

ENTRANCE

*Shaft.*

NAME OF COAL BED # *6*

ELEVATION

THICKNESS OF COAL *94"*

DEPTH TO FLOOR *125*

MAX.

MIN.

AV.

ALTITUDE OF COAL

LOCATION OF SECTION

*458  
120  
338*

COUNT

No.	SECTION.	In.
1	<i>Shale</i>	<i>2'</i>
2	<i>Green Slate</i>	<i>5</i>
3	<i>Coal</i>	<i>16</i>
4	<i>Coal</i>	<i>13</i>
5	<i>Coal</i>	<i>16</i>
6	<i>Clay parting</i>	<i>1/4</i>
7	<i>Coal</i>	<i>18</i>
8	<i>Blue Band</i>	<i>1</i>
9	<i>Coal</i>	<i>25</i>
10		
11		
12		
Tape		Total

SAMPLE No.

CAN No.

CONDITION

GROSS WEIGHT

TIME EXPOSED

NOT SHIPPED

NOT INCLUDED

SECTION



PHYSICAL PROPERTIES BY NUMBERS

*Clay parting #6 in places a thickness of 1/4 inch.*  
*#7 is similar to other Nos*  
*#8 Blue Band varying 1/4" to 1"*  
*Coal. 25" with black jack.*  
*#7 has sulphur and clay bands scattered thru it*

ROOF

*Shale has a large number of sulphur balls attaining a large size.*

FLOOR

*Fireclay.*

DIP *N.E.*

FAULTS, ETC.

GAS

COLLECTOR

*Udden*

REFERENCE

*N.B. 138. P 38.*

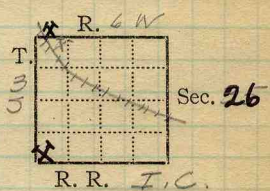
DATE

*6-22-08*

*1735a*  
*21357a*  
~~*2126*~~  
*1726*



Mine Name or No., *O.K. Mine*  
 1 mile *SE* from *Marissa*  
 Operator, 1911 *Egyptian C & M. Co*  
 Operator, 191



Entrance, *Shaft* Elev., *480* ft. } above, *sea level*  
 } below,  
 Depth to ~~bottom~~ coal, *120* ft. Alt. *360*

SURFACE DATA.

- A. Topography, *Rolling* See
- B. Surficial materials. (1) Character, *Till*
- (2) Thickness, *No information* (3) Effect on mining and shaft-sinking, of former drainage lines, underground water strata, etc. *No information*

- C. Outcrops, (1) Character, See  
 (2) Structure, See  
 (3) Fossil horizons, See  
 Collection No.,  
 (4) Evidences of subsidence, See
- D. Note collection of mine maps, drill records and shaft logs.

See drill record sheet,

E. Notes on surrounding area,

GEN'L COAL REPT  
 247

See

Coal bed name: Local, Survey No. *#6*

Collector, *Monroe*

Mine, *O.K.* Co. *St. Clair* Index No. *1726-AB*

L.—SURFACE SHEET (Geol.)



F. Thickness of rock above bed worked, *No information*

(1) Important variations, See

G. Note presence of strata having important effect on mining, *Black slate makes a fair roof* See

- (1) Position, *Above coal*
- (2) Character, *Black, carbonaceous shale.*
- (3) Persistence, *Thruout mine*
- (4) Other workable coal beds, *No information* See

H. Cap rock, *Lime rock (ls)*

- (1) Thickness, *No information*
- (2) Height above coal, *1" to 4"* See X3

I. Immediate roof, *Slate*

- (1) Thickness, *Up to 4'* (2) Contact with coal, *Clean*
- (3) Horizontal variation, *Varies in thickness*
- Character fairly constant. See X4*

J. Draw slate. (1) Thickness, (2) Contacts

- (3) Persistence, *Very little draw slate*

K. Coal bed: Max. *8'* Min. *72"* Av. *78"* inches

- (1) Benches, *Two*
- (a) Position, *Above & below B.B.*
- (b) Persistence, *Thruout mine.* See

- (2) Bedded impurities, kind, position in benches, persistence, ease of separation. *Pyrite per-*

*sistent, also B.B. of sh. & pyrite.*

- (3) Irregularities in continuity of bed (due to deposition, erosion, or movement, *Several minor*

- slips* (a) Effect on mining, See X1
- See

SECTION				
Ft.	In.	Name		Sym.
7		Limestone		
4		Black sh		
6		Coal		
5		Floor clay		
<i>Dir = 4'</i>				

Collector, *Monroe*

Coal: Survey No. *#6*

Mine, *O.K.* Co. *St. Clair*

Index No. *1725-A8*



## K. (5) Physical character of coal in benches,

(a) Relative hardness, *Hard*(b) Lustre, *Bright + dull, not glance*(c) Fracture, *Hackly*(d) Texture, *Laminated*

See

(6) Impurities in coal, other than bedded, *No. 1*

(a) Kind,

(b) Position and persistence,

(c) Rejected,

Ease of separation,

See

L. Floor: (1) Material, *Floorclay*(2) Thickness, *At least 60"*

(3) Variation,

(4) Note character, condition, tendency to heave, relation to undercutting commercial value.

*No small heaves after long periods.**Floor mostly fire clay except where it has been filled in.**Blasting from the solid in this mine but undercutting should be practicable.*

See

(5) Clay sample No.

Location,

## M. Stratigraphy,

(1) Fossiliferous horizons underground, *Ls + sh, foot lift**containing brachiopods in abundance,*

Collection No.

Location,

## N. Notes on effect of deep drilling in coal mine areas.

See

Collector, *Monroe*Mine, *O. K.*Co. *St. Clair*Coal: Survey No. #6 Index No. *1726 A8*

N.—UNDERGROUND SHEET (Geol.)

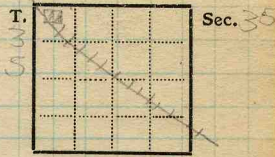
*1726, 10*

30144-2M)



259693

TOWN *Marissa* TOWNSHIP *Marissa* MAP No. *R. 8W*  
 FARM *O.K Mine*  
 COMPANY *Egyptian Coal & Mining Co*  
 AUTHORITY  
 ELEVATION HOLE No.  
 COLLECTOR *Monroe* DATE DRILLED



No.	STRATA	THICKNESS		DEPTH	
		FEET	IN.	FEET	IN.
1	Top coal		16 1/2		
2	Char coal + pyrite		1/4		
3	Coal		7 1/2		
4	Clay mixture + pyrite		1		
5	Coal		5		
6	Clay mixture		3/4		
7	Coal		9		
8	Charcoal		1/4 - 1/2		
9	Coal		5 1/2		
10	Pyrite		1/8 - 1/4		
11	Coal		20		
12	BB (not consistent)		1 - 1/2		
13	Coal		17		
	Total		83"		

County *St. Clair*

Index No. *1726 A8*

T.-DRILL RECORD.

*1726.10*



259693

INDEX

(36713-500-1-20)

K3

4"

sh

chamois  
stone

coat

Collector *Monroe*

X- |

EXTRA NO. *1*

Index No. *1725-88*

County *St. Clair*

*1726.10*

INDEX

(36713-500-7-20)

M

Cap rock (1B)

Clod

Shale

Footlift (~~carbonaceous~~)

41"

45"

20"

Section off Main South about  
1000 ft SE of bottom.

I<sub>3</sub>

Pyrite concretions have  
little tendency to fall & miners  
say they indicate a good  
roof.

Collector

Monroe

Index No.

1726A8

X- 3

EXTRA NO. 3

County

St. Clair

1726.10

INDEX

(36713-500-7-20)

I, Slate 48' thick, 500 ft. from shaft along Main South haulage way. Slate pinches near faults mentioned below. Coal covered by carbonaceous ls. footlift.

X3 Faulting 650' from bottom on South Main. Two faults. One continues S 70 E about 150' through contiguous rooms. Note diagram next page

Collector

Monroe

Index No.

1726-A8

X-7

EXTRA NO. 4

County

St. Clair

1726.10