

FIELD NOTES

Illinois State Geological Survey

SH-8, September 7, 1926. C-31  
Ravine in mid NE/4, NE/4, Sec.3.

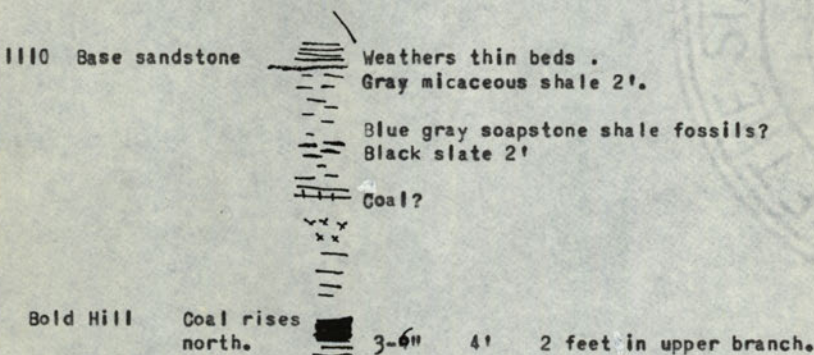
980-440(440) along track.

1020-500(440)

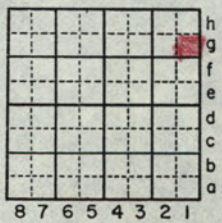
1060-520(500) Stigmarian sandstone? No sandstone below, apparently 5'-6' sandstone.

1110-570(550) Upper stigmarian sandstone, thin comes in about 550- Apparently lower sandstone represented by lower stigmarian sandstone and has shale below it.

1130-590(560+) Upper sandstone on south side of hill come in about 100 yards north of house. Position of lower coal seems to be closely below lower sandstone?



*Bold Hill mine*  
Bola Hill Mine once worked 300 men here .



By G H Cady Date 1926

Quadrangle Harrisburg

County Johnson Sec. 3 T 11S R 4E