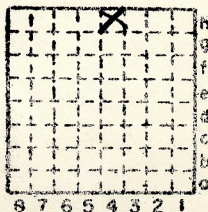


R F

Dutch Hollow  
Coal Co.

County No. 835

Mine Index 3503



Sec.	7	
T.	1	W
R.	8	W
Index No		



Location and Elevation Data

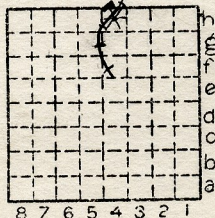
Location: Exact Approximate  
 (Approximate only if no trace of record of original exists)  
 Location by Co. Map  
 Date..... Notebook No..... Page.....  
 Looseleaf ref.....  
 Map files No. 13-87-6

Description of Location

Position in sec., 1/4 sec., 40 acres

330 feet from North line  
350 feet E. of E from ~~East~~ line  
 .....feet from South line  
 .....feet from West line

NW 1/4 NE



Sec. 7  
 T 1 N.  
 R E.  
 8 W.

Other description (1900 Coal Report)  
8' Coal at 150'  
Elev. 365'

Farm.....  
 No.....  
 Company Dutch Hollow  
Mine Coal Co.  
 No.....  
 County No. 835

Elevation 515 ft.

By ETM

Method: Level, transit, alidade, hand level

ETM

Elevation of.....  
 Height of point above ground.....  
 Date..... Notebook..... P.....  
 Looseleaf ref.....

Map files No. 13-87-6  
 Description of item: (drill hole, mine, etc.) Ab'd

County St. Clair Quadrangle 225 Index No. 0707H4

