

Illinois State Geological Survey

.7a

(1207.10) Seemap no. 4107 d5.1-195 Sheet 62

August 21, 1931

Henry Stitzel mine. Small drift mine in bank  
just adjacent to old abandoned strip pit

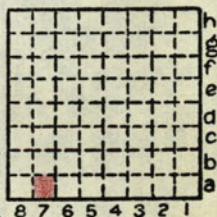
Loess and drift not studied 20'  
Limestone, massive, rather unevenly bedded,  
6', fossiliferous (Brereton ls.)  
Clod, brownish; weathered limestone 6"-1'  
Coal 1-3/4"  
Fusain 1/4"  
Coal 5-1/2"  
Fusain 1/4"  
Coal 1-1/2"  
Fusain 3/8"  
Coal 3-1/2"  
Pyrite and fusain 1/8" (base of "blacksmith  
coal")  
Coal 4-3/4"  
Pyrite band 0-1/4" (top of drift coal)  
Coal 2-1/4"  
Fusain 1/8"  
Coal 2-3/4"  
Fusain 1/4"  
Coal 2-1/2"  
Fusain 1/8"  
Coal 3"  
Clay, dark gray 1/2" (base of drift coal)  
Coal 3"  
Fusain 1/4"  
Coal 8"  
Pyrite 1/8"  
Coal 2 1/2"

(cont. next page)

By H. R. Wanless Date 1931

Quadrangle Waterloo

County St. Clair Sec. 7 T. 1S R. 8W



Illinois State Geological Survey

p. 2 .7a  
(1207.10) cont.

Pyrite 1/4"  
Blue band, dark shale 1/2"-1"  
Coal 7"  
Pyrite 1/4"  
Coal 1'10"  
Underclay, light gray 8" seen in mine  
Large pyrite concretions in underclay 1' from top

.8a

(1207.00) See map no. 4107 d5.1-195 Sheet 62  
August 21, 1931

Small drift mine operated by Fred Stitzel at edge of old strip pit, about 200 yards of mine of Henry Stitzel (brother of Fred)

Cap limestone, medium gray, massive 5'  
Shale, black, fissile, lower part hard 2'5"  
(not present at H. Stitzel mine)  
Coal section similar to that at other mine, not measured.

By H. R. Wanless Date 1931

Quadrangle Waterloo

County St. Clair Sec. 7 T. 1S R. 8W

