



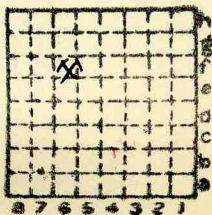
Form 180

BELL & ZOLLER #2

M.i.*145

S-2

296.



Sec: 26

T.	7	N. S.
R.	1	E. W.

Index No.





Mine originally operated by: (1)

Date

Bell & Zoller Coal & Mining Co.

1918

Original name or number: Mine No. 2

Illinois Coal Report 1954 p. 75

Zeigler

LATER OPERATORS

Date

Operator

Name or No.

- 2
- 3
- 4
- 5
- 6
- 7
- 8
- 9
- 10
- 11
- 12
- 13
- 14

*Also owners

#See ownership sheet

SHAFT Railroad, Wagon, Strip, Idle, Abandoned

301'

IDENTIFICATION 9'

County No. _____

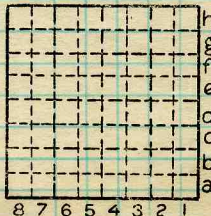
Coal No.

Coal Report No. _____

6

Quad.

County Franklin



Sec.

	T.	N.
	R.	S.
		E.
		W.
		Index No.

COAL MINE OPERATOR

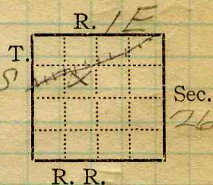


Part of the abandoned buildings of Zeigler (Bell & Zoller) No. 2 Mine at Zeigler, Illinois. The basement is still used by the company as a shop. The coal hoisting shaft was just to the left of this building, and the remains of the water tower can be seen to the right.

Photo May 1974 by Christopher Ledvina.



Mine Name or No., *2*
1 1/2 mile S.W. from *Ziegler*
 Operator, 19*11* *Bell & Zoller Min. Co.* *7S*



Operator, 1911

Entrance, *Shaft* Elev., *392* ft. } above, *sea level C. Z. & G.*
 } below,
 Depth to ~~coal~~ coal, *301* ft. Alt. *91'*

SURFACE DATA.

- A. Topography, *Swampy* See
 B. Surficial materials. (1) Character, *Till*
 (2) Thickness, *79'* (3) Effect on mining and shaft-sinking, of former drainage lines, underground water strata, etc. *No information*

- C. Outcrops, (1) Character, See
 (2) Structure, See
 (3) Fossil horizons, See
 Collection No.,
 (4) Evidences of subsidence, See
 D. Note collection of mine maps, drill records and shaft logs.

Mine Map in Collection

See drill record sheet,

- E. Notes on surrounding area,

See

Coal bed name: Local,

Survey No. *6*

Collector, *Wilson*

Mine, *Bell & Zoller #2* Co. *Franklin* Index No. *B26-36*

L.—SURFACE SHEET (Geol.)



Location and Elevation Data

Location: Exact Approximate

(Approximate only if no trace or record of original exists)

Location by W. B. Roe

Date July 29, 1932 Notebook No. 614 Page 17 (2133)

Looseleaf ref. _____

Map files No. 5-28-28

Description of location

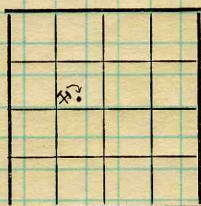
Position in sec., $\frac{1}{4}$ sec., 40 acres

2310 2350 feet from North line

DMM 1938 feet from East line

_____ feet from South line

1730 1500 feet from West line



Sec. 26
 T. 7 S.
 R. 1 E.

Other description: _____

Farm _____

No. _____

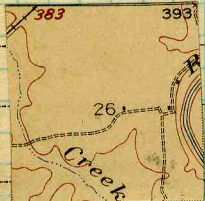
Company _____

Bell & Zeller Mining Co.

No. 2 Ziegler mine

County No. 228 273

Same site as #304



Elevation 387.5 ft.

384.7 ^{O.K.} By Company Letter CG Bell Jan. 12, 1937 Elev. drill hole. (E.T.B.)

By W. B. Roe

cores. 275-1416

Method: Level, transit, alidade, hand level

Plane table and alidade

Elevation of Top of rail

Height of point above ground 3"

Date July 29, 1932 Notebook 614 P. 17 (2133)

Looseleaf ref. _____

Map files No. 5-28-28

Description of item: (drill hole, mine, etc.) Air and materials shaft - active

shipping mine

County Franklin

Quadrangle Herrin

4 Index No. 1226.6e



F. Thickness of rock above bed worked, *216 1/2'*
 (1) Important variations, *No information*

See *Drill record*

G. Note presence of strata having important effect on mining,

See *X 1*

Top coal

- (1) Position, *At top of seam*
- (2) Character, *Makes good roof*
- (3) Persistence, *throughout mine*
- (4) Other workable coal beds, *2' bed at 163 1/2'*

See *Drill log, 1 Dir. id*

H. Cap rock, *Limestone*

- (1) Thickness, *78"*
- (2) Height above coal, *101'*

See *Drill record*

I. Immediate roof, *over top coal is a gray shale*

- (1) Thickness, *?* (2) Contact with coal, *Irregular in places because of small "rolls"*
- (3) Horizontal variation, *?*

See

J. Draw slate. (1) Thickness, (2) Contacts

None

- (3) Persistence,

K. Coal bed: Max. *138* Min. *90* Av. *108* inches

- (1) Benches, *Three*
- (a) Position, *Top coal, above & below blue band*
- (b) Persistence, *throughout mine*

See

- (2) Bedded impurities, kind, position in benches, persistence, ease of separation.

*Big, 1-1 1/2" thick, shale
 Small shale & chert coal layers.*

See

- (3) Irregularities in continuity of bed (due to deposition, erosion, or movement,

Few "rolls"

- (a) Effect on mining,

See *X 2 & 3*

Necessitates timbering.

See *X 2*

SECTION				
Ft.	In.	Name		Sym.
		Surface		
11		Blue sh		
18		Sandy sh		
1	6	Black sh		
5	6	Coal		
5		Soft grey sh		
4		Blue sh		
2		Shaley ss		
12		Sandstone		
14		Sandy sh		
12	6	Blue sh		
2		Dark sh		
1	6	Soft grey sh		
4		Grey sh		
1		Soft grey sh		
2	6	Blue sh		
2		Coal		
7		Fire clay		
7		Blue sh		
3		Dark sh		
3		Limestone		
9		Sandy sh		
4		Blue sh		
6	6	Blue sh		
100	5	Sandy sh		
9	1	Coal		
	6	Fire clay		

Collector, *Wilson*

Coal: Survey No. *6*

Mine, *Bella Zoller & Co. Franklin*

Index No. *1026-36*



K. (5) Physical character of coal in benches,

(a) Relative hardness, *Hard but quite brittle.*(b) Lustre, *Very bright all thro seam.*(c) Fracture, *Fragmented*(d) Texture, *Laminated*

See XI

(6) Impurities in coal, other than bedded,

(a) Kind, *FeS₂*(b) Position and persistence, *Stringers & lenses.*

(c) Rejected,

Ease of separation,

See

L. Floor: (1) Material, *Floor clay & boulders in places.*(2) Thickness, *0' - 26"*(3) Variation, *No information.*

(4) Note character, condition, tendency to heave, relation to undercutting commercial value.

Clay heaves very little.

See

(5) Clay sample No.

Location,

M. Stratigraphy,

(1) Fossiliferous horizons underground,

Collection No.

Location,

N. Notes on effect of deep drilling in coal mine areas.

See

Collector, *Wilson*Coal: Survey No. *6* Mine, *Belle Zoller #2* Co. *Franklin*Index No. *1226:36*

30144-2M)



259693

TOWN *Ziegler*

TOWNSHIP

MAP No.

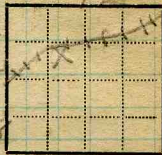
FARM

R. *1E*

COMPANY *Bell & Zoller Mining Co. 75*

T.

AUTHORITY *Log Record in Office at Ziegler*



Sec. *26*

ELEVATION *392*

HOLE No. *2*

COLLECTOR *Wilson*

DATE DRILLED *Feb 30, 1918*

No.	STRATA	THICKNESS		DEPTH	
		FEET	IN.	FEET	IN.
	Surface	<i>79</i>		<i>79</i>	
	Blue Shale	<i>711</i>		<i>90</i>	
	Sandy "	<i>18</i>		<i>108</i>	
	Black "	<i>1</i>	<i>6</i>	<i>109</i>	<i>6</i>
	Coal		<i>6</i>	<i>110</i>	
	Soft Gray Shale	<i>5</i>		<i>115</i>	
	Blue Shale	<i>5</i>		<i>120</i>	
	Shaley S.S.	<i>4</i>		<i>124</i>	
	S.S.	<i>2</i>		<i>126</i>	
	Sandy Shale	<i>14</i>		<i>140</i>	
	Blue Shale	<i>12</i>	<i>6</i>	<i>152</i>	<i>6</i>
	Dark Shales	<i>2</i>		<i>154</i>	<i>6</i>
	Soft Gray Shale	<i>1</i>	<i>6</i>	<i>156</i>	
	Gray L.S. <i>plaza</i>	<i>4</i>		<i>160</i>	
	Soft Gray Shale	<i>1</i>		<i>161</i>	
	Blue Shale		<i>6</i>	<i>161</i>	<i>6</i>
	Coal <i>7</i>	<i>2</i>		<i>163</i>	<i>6</i>
	Fire Clay		<i>6</i>	<i>164</i>	
	Blue Shale	<i>7</i>		<i>171</i>	
	Dark Shale	<i>1</i>		<i>172</i>	
	lime stone <i>B.F.</i>	<i>3</i>		<i>175</i>	
	Sandy Shale	<i>9</i>		<i>184</i>	
	Blue Shale	<i>4</i>		<i>188</i>	
	Blue L.S. <i>Branch</i>	<i>6</i>	<i>6</i>	<i>194</i>	<i>6</i>
	Blue Shale		<i>6</i>	<i>195</i>	
	Sandy Shale	<i>100</i>	<i>5</i>	<i>295</i>	<i>5</i>
	Coal	<i>9</i>	<i>1</i>	<i>304</i>	<i>6</i>
	Fire Clay		<i>6</i>	<i>305</i>	

County *Franklin*

Index No. *1226-36*

T.—DRILL RECORD.





NDEX

(36713-500-7-20)

K5 Cleat at face of 4th S;
 N 78° W; S 42° W.
 At face of 586 W. off 4th Mill
 Face S 27° E; Butt N 48° E. Cleat only
 fairly developed.
 At face of Main E; Face S 30° E

G Except for every few falls, where a
 soft gray shale is exposed, the top coal
 is found thruout the mine as a roof. The
 char coal parting which separates the
 top coal from the rest of the seam is
 from 24-30" from the top of the
 coal seam.

2
 6 1/2
 1 1/2
 2
 2 1/2
 2 1/2

Collector Wilson

Index No. 1226-36

X- 1

EXTRA NO. 1

County Franklin



INDEX

(36713-500-7-20)

"R311" in 45° crosscut between 2nd & 3rd East. Here the shale apparently cuts down into the coal while the floor of the coal remains level. Slips here are in roof & upper part of seam - differential compression?

Collector *Wilson*

X- *2*

EXTRA NO.

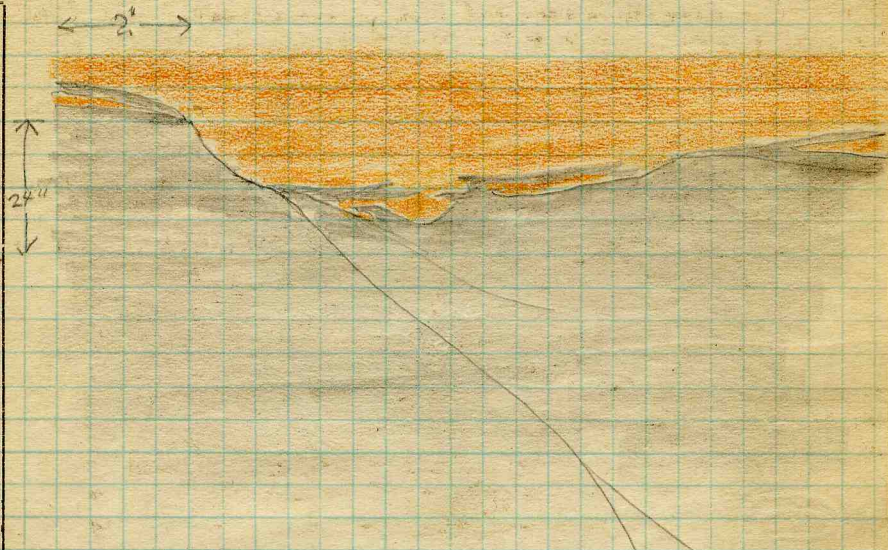
Index No. *1226.36*

County *Franklin*



INDEX

(36713-500-7-20)



"Roll" on face of Room 14 off 2nd North
 Panel of 1st Main East.
 Distortion and slip do not reach the base
 of the coal

Bell + Zeller No 2.

Collector

Culver

X-3

EXTRA NO.

Index No.

1226.36

County

Franklin



Operator, *Belle Zoller Coal Co* Date *July 1, 1921*
 Mine, *No. 2* Sec. *26* T. *75* R. *1E*
 Located, $\frac{1}{2}$ SW miles from *Ziegler*
 Location in mine, *Face 4th S* *800' W x 1900' S of air shaft*

GRAPHIC SECTION		DESCRIPTION OF SECTION (AT POINT SAMPLED)		
In.	No.	No.	(Note character and thickness of roof)	Inches
			<i>Shale roof</i>	
<i>30</i>	<i>1</i>		<i>1 Coal (left as roof) 30"</i>	
			<i>2 Coal</i>	<i>22"</i>
			<i>3 Char coal</i>	<i>8-1/2"</i>
			<i>4 Coal</i>	<i>2 1/2"</i>
			<i>5 Charcoal</i>	<i>1/4"</i>
			<i>6 Coal</i>	<i>12 1/2"</i>
<i>12</i>	<i>2</i>		<i>7 Pyrite</i>	<i>4"</i>
			<i>8 Coal</i>	<i>6"</i>
<i>1/2-1/2</i> <i>1/2</i>	<i>3</i>		<i>9 Clay & Pyrite</i>	<i>2"</i>
	<i>4</i>		<i>10 Coal</i>	<i>18"</i>
<i>12</i>	<i>6</i>		<i>11 Clay (Shale)</i>	<i>1/2"</i>
<i>1/4</i>	<i>7</i>		<i>12 Coal</i>	<i>4 1/4"</i>
<i>6</i>	<i>8</i>		<i>13 B.B.</i>	<i>1 1/2"</i>
<i>2</i>	<i>9</i>		<i>14 Coal</i>	<i>21"</i>
<i>18</i>	<i>10</i>		<i>Tape 81"</i>	
			(Note character and thickness of floor)	
<i>1/2</i>	<i>11</i>		Total thickness of coal.	
<i>4 1/2</i> <i>1/2</i>	<i>12</i> <i>13</i>			
<i>21</i>	<i>14</i>		Condition, <i>As mined</i> Time, hr. min.	
			Wt. Gross, <i>25</i> lbs. Net, lbs.	
			What Nos. shipped by Co.?	
			Excluded from sample: No. <i>19, 11, 13.</i>	
			Sample represents in. tons.	
			Impurities? How do they occur?	

Sample No. _____ Can No. *N-21-71* Lab. No. *12865*
 Collector, *Netzeband* Coal: Survey No. *6*
 Mine, *Belle Zoller #2* Co. *Franklin* Index No. *1226-36*
 R.—COAL SAMPLE SHEET.



Operator, *Belle Zoller Mining Co.*

Date *July 1, 1921*

Mine, # *2*

Sec. *26* T. *7S* R. *1E*

Located, *1 1/2* miles from *Ziegler*

Location in mine, *Cross Cut between 586 W. of 444 N. W. (800')*

GRAPHIC SECTION		DESCRIPTION OF SECTION (AT POINT SAMPLED)		
In.	No.	No.	(Note character and thickness of roof)	Inches
			Shale	
		1	Coal Roof	30"
30	1	2	Coal	7
		3	Charcoal	1 1/4
		4	Coal	16
		5	Charcoal	1/8
		6	Coal	3 1/2
7 1/8	2	7	Charcoal	1/4
	3	8	Coal	25 1/2
		9	Shale	1
16	4	10	Coal	4
		11	B.B.	1 1/4
1/8 3 1/4 1/4	5 6 7	12	Coal	2 1/4
			Tape 79 1/2"	
25 1/2	8			
			(Note character and thickness of floor)	
1	9		Total thickness of coal.	
4 1/4	10			
	11			
2 1/4	12			
			Condition, <i>As Mined</i>	Time, hr. min.
			Wt. Gross, <i>30</i> lbs.	Net, lbs.
			What Nos. shipped by Co.?	
			Excluded from sample: No. <i>19 & 11</i>	
			Sample represents <i>1</i> in.	tons.
			Impurities? How do they occur?	

Sample No. _____ Can No. *N-2672* Lab. No. *12866*

Collector, *Netzeband* Coal: Survey No. *6*

Mine, *Belle & Zoller #2* Co. *Franklin* Index No. *1226.36*



Operator, *Bell & Zoller Coal Co.* Date *July 1, 1921*
 Mine, *No. 2* Sec. *26* T. *75* R. *1E*
 Located, *1 1/2* miles from *Ziegler*
 Location in mine, *Face of 2nd E. entry*

GRAPHIC SECTION		DESCRIPTION OF SECTION (AT POINT SAMPLED)		
In.	No.	No.	(Note character and thickness of roof)	Inches
			<i>Shale roof</i>	
<i>30</i>	<i>1</i>	<i>1</i>	<i>Coal (left as roof) $\frac{1}{2}$ 30"</i>	<i>2</i>
		<i>2</i>	<i>Coal</i>	<i>1 1/8</i>
		<i>3</i>	<i>Charcoal</i>	<i>4 1/8</i>
		<i>4</i>	<i>Coal</i>	<i>4 3/4</i>
		<i>5</i>	<i>Charcoal</i>	<i>8 1/4</i>
<i>11</i>	<i>2</i>	<i>6</i>	<i>Coal</i>	<i>15 1/4</i>
<i>1/8</i>	<i>3</i>	<i>7</i>	<i>Charcoal</i>	<i>10 1/4</i>
<i>1/4</i>	<i>4</i>	<i>8</i>	<i>Coal</i>	<i>7</i>
<i>1/4</i>	<i>5</i>	<i>9</i>	<i>Charcoal</i>	<i>59</i>
<i>8 3/4</i>	<i>6</i>	<i>10</i>	<i>B.B. Shale</i>	
<i>1/4</i>	<i>7</i>	<i>11</i>	<i>Coal</i>	
<i>15</i>	<i>8</i>		<i>Tape 90"</i>	<i>89</i>
<i>1/4</i>	<i>9</i>			
<i>10 1/4</i>	<i>10</i>			
<i>1</i>	<i>11</i>		(Note character and thickness of floor)	
			Total thickness of coal.	
<i>39</i>	<i>12</i>		Condition, <i>As mined</i> Time, hr. min.	
			Wt. Gross, <i>25</i> lbs. Net, lbs.	
			What Nos. shipped by Co.?	
			Excluded from sample: No. <i>1, 11</i>	
			Sample represents in. tons.	
			Impurities? How do they occur?	

Sample No. _____ Can No. *14-21-73* Lab. No. *12867*
 Collector, *Netzeband* Coal: Survey No. *6*
 Mine, *Bell & Zoller #2* Co. *Franklin* Index No. *1226.36*
R.—COAL SAMPLE SHEET.



Symbol	Z - 24	Description	Inches
1 division = $\frac{1}{2}$ in.]			
coal		Roof - gray slate	
		roof coal - 18" +	
7 1/2"	1.	1. Coal - 90 %	7 1/2
		2. M.C. 0 - 1/2"	1/8
	2.	3. Coal - 60 %	4 1/2
4 1/2"	3.	4. M.C.	1/16
		5. Coal - 60 %	1 -
1"	4.	6. M.C. 1/16" - 1/8"	1/16
4 1/2"	7.	7. Coal - 70 %	4 1/2
		8. M.C.	1/8
1/2"	8.	9. Coal - 80 %	1/2
1"	9.	10. Bone	1/2
4"	15.	11. Coal - 70 %	1 1/2
		12. Mother coal	1/8
1"	16.	13. Coal - 70 %	1 -
1/2"	17.	14. M.C., widens to 1/4"	1/16
2"	19.	15. Coal - 60 %	4 -
1/4"	20.	16. Coal and M.C.	1 -
3/8"	21.	17. Coal - 50 %	1/2
1 1/2"	22.	18. M.C. and shale	1/8
1 1/2"	23.	19. Coal - 60 %	2 -
1 1/2"	24.	20. Coal - 40 %	1 1/4
4"	26.	21. Bone -	3/4
1 1/2"	27.	22. Coal - 80 %	1 1/2
1 1/2"	28.	23. M.C. with bone lens	1/4
4"	31.	24. Coal - 70 %	1 1/2
1 1/2"	32.	25. M.C.	1/16
1 1/2"	33.	26. Coal - 60 %	4 -
1 1/2"	34.	27. " - 70 %	1 1/2
3"	42.	28. " - 70 %	4 -
4 1/2"	43.	29. M.C., 1/8" - 1/2"	1/2
		30. Coal - 60 %	2 -
2 1/2"	44.	31. M.C., 1/8" - 1/4"	1/4
		32. Coal - 50 %	2 1/2
2 1/2"	45.	33. M.C., 1/8" - 1/4"	1/4
1 1/2"	46.	34. Coal - 50 %	1/2
3 1/2"	47.	35. M.C.	1/16
1 1/2"	48.		
2 1/2"	49.		
	72"		

Collector.

Mine. Zeigler No. 2 Co.

Q.-COAL SECTION SHEET.

Coal: Survey No.

Index No. Z-24



Symbol	Z - 24 (cont.)	Description	Inches
1 division = $\frac{1}{2}$ in.			
	72"		
	70.6		
2"	50.	36. Coal - 70 %	1 1/2
1"	51.	37. Coal - 60 %	1 1/2
3 1/2"	52.	38. Coal - 50 %	1 1/2
2 1/2"	53.	39. M.C., 0 - 1/8"	1/8
	54.	40. Coal - 70 %	1 1/2
		41. Coal - 70 %	1 1/2
		42. Coal - 40 %	3 -
		43. Coal - 40 %	4 1/2
16 1/2"	55.	44. Coal - 80 %	2 1/2
		45. Coal - 60 %	2 1/2
		46. Coal - 70 %	1 1/2
		47. Coal - 60 %	3 1/2
3/4"	56.	48. M.C. lens	1/2
2 1/4"	57.	49. Coal - 50 %	2 1/2
		50. Coal - 40 %	2 -
		51. Coal - 50 %	1 -
10' coal		52. Blue band, 1/2-6"	3 1/2
		53. Coal - 70 %	2 1/2
		54. M.C.? widens to 1/4"	-
		55. Coal - 70 %	16 1/2
		56. Hard M.C.	3/4
		57. Coal - 70 %	2 1/4
floor coal - 10" ±			
tape - 102 "			

Collector.

Mine. Zeigler L Co.
Q.-COAL SECTION SHEET.

Coal: Survey No.

Index No. Z24 - 1



Symbol	Z - 25	Description	Inches
1 division = $\frac{1}{2}$ in.]			
coal		Roof coal - 18" \pm	
6"	1.	1. Coal - 80 %	6 -
		2. Coal - 80 %	3 1/2
		3. M. C.	1/8
3 1/2"	2.	4. Coal - 80 %	2 1/2
	3.	5. " - 80 %	1 1/2
2 1/2"	4.	6. M.C.	1/8
1 1/2"	5.	7. Coal - 80 %	1 1/2
1 1/2"	6.	8. M.C.	1/8
2"	7.	9. Coal - 80 %	2 -
1"	8.	10. Coal - 80 %	1 -
2 1/2"	9.	11. M.C.	1/8
1"	10.	12. Coal - 70 %	2 1/2
2"	11.	13. " - 70 %	1 -
2"	12.	14. M.C., widens to 1/4	1/4
7"	13.	15. Coal - 70 %	2 -
	14.	16. " - 70 %	2 -
1"	15.	17. " - 50 %	7 -
1"	16.	18. " - 70 %	1 -
2"	17.	19. " - 80 %	1 -
	18.	20. " - 70 %	2 -
8 1/2"	19.	21. " - 60 %	8 1/2
	20.	22. Bony M.C.	1 -
1"	21.	23. Coal - 70 %	1 -
1"	22.	24. " - 60 %	3 -
3"	23.	25. " - 50 %	2 -
	24.	26. " - 70 %	1 1/2
2"	25.	27. M.C., 1/4" - 1/2"	1/2
1 1/2"	26.	28. Coal - 70 %	1 -
1 1/2"	27.	29. " - 70 %	1 1/2
2"	28.	30. " - 70 %	2 -
3"	29.	31. " - 70 %	3 -
1 1/2"	30.	32. M.C:	1/8
1 1/2"	31.	33. Coal - 70 %	1 1/2
4 1/2"	32.	34. M.C. lens	1 1/2
	33.	35. Coal - 60 %	4 1/2
5"	34.	36. " - 70 %	5 -
72"			

Collector.

Mine.

Co.

Coal: Survey No.

Index No.

Z-25



Symbol	Z - 25 (cont.)	Description	Inches
1 division = $\frac{1}{2}$ in.]			
	72"		
$\frac{1}{2}$ "	37.	Bone	1/2
2 1/2"	38.	Coal - 70 %	2 1/2
	39.	" - 70 %	3 -
3"	40.	Blue band, 1/2-4"	2 1/2
2 1/2"	41.	Coal - 50 %	1 -
1"	42.	Bone, 0 - 1/4"	1/4
	43.	Coal - 60 %	5 1/2
5 1/2"	44.	M.C., widens to 1/2"	-
	45.	Coal - 50 %	3 -
3"	46.	" - 60 %	2 -
	47.	M.C.	1/8
2"	48.	Coal - 60 %	3 -
3"	49.	M.C.	1/4
2 1/2"	50.	Coal - 50 %	2 1/2
	51.	M.C., 1/8" - 1/4"	1/4
4"	52.	Coal - 60 %	4 -
10" coal		floor coal - 10" \pm	
		tape - 104 in.	

Collector.

Mine. Zeigler #1 Co.

Q.—COAL SECTION SHEET.

Coal: Survey No.

Index No. Z25 - 2



Symbol **Z - 26** Description Inches

1 division = $\frac{8}{2}$ in.]

Roof coal - 12" ±			
2"	1.	1. Coal - 90 %	2 -
	2.	2. Bone lens	1/4
6 1/2"	3.	3. Coal - 10 %	6 1/2
	4.	4. Coal - 5 %	6 1/2
		5. M.C., 0 - 1/8"	1/8
6 1/2"	4.	6. Coal - 20 %	4 1/2
	5.	7. Bone	1/8
	6.	8. Coal - 40 %	2 1/2
4 1/2"	6.	9. Bone	1/8
	7.	10. Coal - 80 %	3 1/2
2 1/2"	8.	11. Bone	1/2
	9.	12. Coal - 70 %	2 1/2
3 1/2"	10.	13. " - 50 %	11 1/2
1/2"	11.	14. M.C.	1/8
2 1/2"	12.	15. Coal - 60 %	6 -
		16. Coal - 40 %	2 -
	13.	17. M.C. lens, 0 - 1/4"	1/4
11 1/2"		18. Coal - 40 %	7 -
		19. Bone	1/8
	14.	20. Coal - 50 %	6 -
	15.	21. M.C., 1/4" - 1/2"	1/2
6"	15.	22. Coal - 50 %	10 -
		23. M.C.	1/4
2"	16.	24. Coal - 60 %	2 1/2
	17.	25. M.C.	1/8
7"	18.	26. Coal - 25 %	1 -
		27. M.C.	1/8
	19.	28. Coal - 40 %	4 -
		29. " - 40 %	1/2
6"	20.	30. M.C.	1/2
	21.	31. Coal - 60 %	3 1/2
		32. " - 60 %	8 -
10"	22.	33. Bone (Blue band)	1/2
		34. Coal - 30 %	1/2
		35. M.C.	1/4
	23.	36. Coal - 60 %	7 -

Collector.

Mine.

Co.

Coal: Survey No.

Index No.

Z-26



Symbol	Z - 26 (cont.)	Description	Inches
1 division = $\frac{1}{2}$ in.]			
	72"	37. Bony M.C., 1/8 - 1/2	1/2
2 1/2"	24.	38. Coal - 70 %	1/2
1"	22.	39. M.C.	1/4
4"	28.	40. Coal - 60 %	12 -
1/2"	29.		
1/2"	30.		
3 1/2"	31.		
		floor coal - 10" +	
8"	32.	tape - 112 in.	
1/2"	33.		
1/2"	34.		
	35.		
7"	36.		
1/2"	37.		
	38.		
	39.		
12"	40.		
10"	coal		

Collector.

Mine. Zeigler #1 Co.

Q.—COAL SECTION SHEET.

Coal: Survey No.

Index No. Z27 - 3

6



Symbol **Z - 26 a** Description **Inches**

1 division = 2 in.



section of top coal at
Z26 - 3, 150 ft back from
face.

roof - gray shale with
numerous plant fossils

1.. Coal	- 80 %	1 -
2. M.C.,	1/8" - 1/2"	1/2
3. Coal	- 70 %	2 -
4. "	- 70 %	2 1/2
5. "	- 70 %	7 1/2
6. "	- 70 %	1 1/2
7. M.C.		1/8
8. Coal	- 70 %	1 1/2
9. M.C.		1/8
10. Coal	- 70 %	2 1/2
11. "	- 70 %	2 -
12. M.C.,	1/8 - 1/4"	1/4

Tape - 21 in.

Collector.

Mine. Zeigler #1 Co.

Q.-COAL SECTION SHEET.

Coal: Survey No.

Index No. Z26a - 3



Symbol Z - 27

Description

Inches

1 division = 1/2 in.

Roof coal - 20"

Thickness	Number	Description	Percentage	Inches
3 1/2"	1.	coal		
	1.	Coal	- 80 %	3 1/2
1"	2.	"	- 80 %	1 -
1 1/2"	3.	"	- 70 %	1 1/2
2"	4.	"	- 70 %	2 -
2 1/2"	5.	Bony mother coal		1/2
	6.	Coal	- 70 %	2 1/2
3"	7.	"	- 60 %	3 -
1 1/2"	8.	Bony shale, 1/4-1/2		1/2
2"	9.	Coal	- 60 %	2 -
1"	10.	"	- 40 %	1 -
2"	11.	Bony coal		1/2
1 1/2"	12.	Coal	- 70 %	2 -
4"	13.	"	- 80 %	1 1/2
1 1/2"	14.	" , dull, bony		4 -
1 1/2"	15.	"	- 80 %	1 1/2
6"	16.	"	- 80 %	1 1/2
1 1/2"	17.	"	- 60 %	1 1/2
1 1/2"	18.	M.C., 1/16" - 1/4		1/4
2"	19.	Coal	- 60 %	6 -
1"	20.	M.C. lens, 1/4-1/2		1/2
5 1/2"	21.	Coal	- 50 %	2 -
1 1/2"	22.	M.C., 0 - 1/8 "		1/8
1 1/2"	23.	Coal	- 60 %	1 -
4 1/2"	24.	Coal	- 50 %	5 1/2
	25.	Bone		1/4
	26.	Coal	- 60 %	1 1/2
	27.	"	- 60 %	1 1/2
5 1/2"	28.	" 70 - 70 %		4 1/2
1/2"	29.	Bone		1/4
2"	30.	Coal	- 60 %	5 1/2
2"	31.	Bone		1/2
2"	32.	Coal	- 70 %	2 -
4"	33.	"	- 60 %	2 -
3"	34.	"	- 60 %	2 -
	35.	"	- 50 %	4 -
	36.	"	- 50 %	3 -

Collector.

Mine.

Co.

Coal: Survey No.

Index No.



Symbol **Z - 27 (cont.)** Description Inches

1 division = 3/4 in.]

Symbol	Description	Inches
70"		
1 1/2"	37. Boney coal	1 1/2
3"	38. Coal - 60 %	3 -
1 1/2"	39. " - 60 %	1 1/2
2 1/2"	40. Blue band,	2 1/2
	41. Coal - 50 %	7 -
	42. " - 50 %	8 -
7"	43. " - 20 %	2 -
	44. M.C.	1/8
	45. Coal - 40 %	5 1/2
8"		
	Floor - clay	
2"		
	Tape - 101 in.	
5 1/2"		
	Top coal drilled -	
	Coal - not visible	7 -
	Coal - 60 %	3 1/2
7"	" - 70 %	3 1/2
	M.C.	1/4
	Coal - 60 %	2 1/2
3 1/2"	" - 50 %	2 -
3 1/2"		
1/4"		
2 1/2"		
2"		
	Tape - 19 in.	

Collector.
Mine, Zeigler #1 Co.

Coal: Survey No.
Index No. Z27 - 4



Symbol Z-24 Description Inches

1 division = $\frac{1}{2}$ in.

Symbol	Description	Inches
	Zeigler - I roof - gray slate 18" ± roof coal -	
7 1/2"	1. coal - 90%	
	2. m.c. 0"-1/2"	
4 1/2"	3. coal - 60%	
1"	4. m.c.	
	5. coal - 60%	
4 1/2"	6. m.c. - 1/16"-1/8"	
4 1/2"	7. coal - 70%	
4 1/2"	8. m.c.	
4"	9. coal - 70%	
4 1/2"	10. bone	
2"	11. coal - 70%	
1 1/4"	12. m.c.	
1 1/2"	13. coal - 70%	
1 1/2"	14. m.c. - > 1/4" pers.	
4"	15. coal - 60%	
1 1/2"	16. coal & m.c. mixed	
1 1/2"	17. coal - 50%	
4"	18. m.c. & shale	
2"	19. coal - 60%	
2 1/2"	20. " - 40%	
1 1/2"	21. bone	
1 1/2"	22. coal - 80%	
1 1/2"	23. m.c. str - lens of bone 1/4"	
1 1/2"	24. coal - 70%	
1 1/2"	25. m.c.	
3"	26. coal - 60%	
	27. " - 70%	
4 1/2"	28. " - 70%	
2 1/2"	29. m.c.	
2 1/2"	30. coal - 60%	
2 1/2"	31. m.c.	
1 1/2"	32. coal - 50%	
3 1/2"	33. m.c.	
	34. coal - 50%	
	35. m.c.	

Collector.

Mine.

Co.

Coal: Survey No.

Index No.

Z-24



Symbol	Z-24 (cont.)		Description	Inches
				72"
5"			36. coal	1 - 70%
			37.	
2 1/2"		1/2"	38. bone	
			38. coal	- 70%
3"			39.	" - 20%
			39.	" - 20%
		2 1/2"	40. B. B.	- 1/2" - 4"
1"			41. coal	- 50%
			42.	
5 1/2"		0 1/4"	42. bone	
			43. coal	- 60%
	m.c.		44.	> 1/2"
3"			45. coal	- 50%
			46.	" - 60%
2"			47.	m.c.
		1/8"	48. coal	- 60%
3"			49.	
			49. coal	- 60%
2 1/2"		1/4"	50. m.c.	
			50. coal	- 50%
4"			51.	
		1/8 - 1/4"	51. m.c.	
			52. coal	- 60%
			floor - 10" ± coal -	

Zeigler #1 - room 5,
18th right, 1st EN
(east side)

Collector.

Mine. Zeigler Co.

Q.-COAL SECTION SHEET.

Coal: Survey No.

Index No. Z-24-1



Symbol *Z-25* Description Inches

1 division=3 in.

*Zeigler - II
roof coal - 18" ±*

6"	1	1.	coal	-	80%
		2.	"	-	80%
3 1/2"	2	3.	m.c.		
	3	4.	coal	-	80%
2 1/2"	4	5.	"	-	80%
1 1/2"	5	6.	m.c.		
1 1/2"	6	7.	coal	-	80%
2"	7	8.	m.c.		
1"	8	9.	coal	-	80%
2 1/2"	9	10.	"	-	80%
1"	10	11.	m.c.		
2"	11	12.	coal	-	70%
2"	12	13.	"	-	70%
7"	13	14.	> 1/4"		pers.
	14	15.	coal	-	70%
1"	15	16.	"	-	70%
1"	16	17.	"	-	50%
2"	17	18.	"	-	70%
	18	19.	"	-	80%
8 1/2"	19	20.	"	-	70%
	20	21.	"	-	60%
1"	21	22.	banz	m.c.	
3"	22	23.	coal	-	70%
2"	23	24.	"	-	60%
1 1/2"	24	25.	"	-	50%
1 1/2"	25	26.	"	-	70%
1 1/2"	26	27.	m.c.		
2"	27	28.	coal	-	70%
3"	28	29.	"	-	70%
1 1/2"	29	30.	"	-	70%
4 1/2"	30	31.	"	-	70%
	31	32.	m.c.		
	32	33.	coal	-	70%
	33	34.	m.c.		
	34	35.	coal	-	60%
78"	35				

Collector.

Mine.

Co.

Coal: Survey No.

Index No.

Q.-COAL SECTION SHEET.

Z-25



Symbol	Z-25 (cont.)		Description	Inches
1 division = 3 in.]				
2 1/2	m.c.	49	36. coal -	70%
2	m.c.	50	37. " -	60%
1"	m.c.	51	38. " -	50%
3 1/2		52	39. m.c.	
2 1/2	m.c.	53	40. coal -	70%
		54	41. " -	70%
			42. " -	40%
			43. " -	40%
			44. " -	80%
1 6/2		55	45. " -	60%
			46. " -	70%
			47. " -	60%
		1/2	48. m.c. lens	
		56	49. coal -	50%
2 1/4		57	50. " -	40%
			51. " -	50%
		3 1/2	52. Blue band 1/2" - 6"	
			53. coal -	70%
		0 1/4	54. > 1/4"	
			55. coal -	70%
		3/4	56. hard m.c.	
			57. coal -	70%
			floor 10" ± coal -	
I - Zeigler #1 - room 15, 4th left, 8 E A N (north side)				

Collector.

Mine.

Co.

Q.—COAL SECTION SHEET.

Coal: Survey No.

Index No.

Z-25-2



Symbol	Z-26 (cont.)		Description	Inches
1 division=3 in.]				
2 1/2"	60%	22"		
1 1/2"	25%	11	1/8"	11. m.c.
4"	40%	12	1/8"	12. m.c.
1/2"	40%	m.c.	1/2"	13. m.c.
3 1/2"	60%	13	1"	14. bone (B.B.P)
		m.c.	1/4"	15. m.c.
8"	60%		1/8-1/2	16. bony m.c.
			1/4	17. m.c.
1/2"	30%	14	floor 10" ± coal-	
2"	60%	15		
4 1/2"	70%	16		
		17		
12"	60%		Zeigler #1-III - room 8, 13 R, 10 ES (south side)	

Collector.

Mine. Zeigler Co.

Q.-COAL SECTION SHEET.

Coal: Survey No.

Index No. Z-26



Symbol **Z-26 a.** Description **Inches**

[1 division=3 in.]

section of top coal
at III 150' back
from face.

roof - gray shale
with many plant fossils.

1"	80%	1	1/8" - 1/2"	- 1.	m.c.
2"	70%	m.c.	1/8"	- 2.	m.c.
2 1/2"	70%	m.c.	1/8"	- 3.	m.c.
			1/8" - 1/4"	- 4.	m.c.
7 1/2"	70%				
1 1/2"	70%	m.c.			
1 1/2"	70%	2			
1 1/2"	70%	3			
2 1/2"	70%	m.c.			
2"	70%	4			

Collector.

Mine. *Zeigler* Co.

Q.—COAL SECTION SHEET.

Coal: Survey No.

Index No. *Z-26 a*



Symbol **Z-27** Description Inches

[1 division=3 in.]

Symbol	Description	Inches
	Zeigler - IV	
	roof - 20"	
3 1/2	88%	1/2" 1. bony mother coal.
1	m.c.	1/4-1/2" 2. bony shale.
1 1/2	70%	1/2" 3. bony coal
2	70%	1/16-1/4 4. m.c. pers.
2 1/2	70%	1/4-1/2" 5. m.c. lens
3"	60%	0-1/8 6. m.c.
2"	60%	1/4" 7. bone.
1"	40%	1/4" 8. bone, pers.
2"	70%	1/2" 9. bone
1 1/2"	88%	
4"		dull, bony coal
1 1/2"	80%	m.c.
1 1/2"	60%	m.c.
6"	60%	4
2"	50%	5
1"	60%	6 m.c.
5 1/2"	50%	
1 1/2"		7 m.c.
1 1/2"		m.c.
4 1/2	70%	8
5 1/2	60%	
2"	70%	9 bone
2	60%	m.c.
2"	60%	m.c.
4"	50%	m.c.
	70%	

Collector.

Mine.

Co.

Q.—COAL SECTION SHEET.

Coal: Survey No.

Index No.

Z-27



Z-27 (cont.)

Symbol	Description	Inches
1 division = 3 in.]		
3"	20"	
50%	10.	1 1/2 10. bone & coal.
3"	60%	2 1/2 11. B, B.
1/2"	60%	m.c.
2 1/2"	11	1/8" 12. m.c.
7"	50%	
	m.c.	
8"	50%	
2"	20%	12
		Floor coal.
5 1/2"	40%	
x x x	clay	room 26, 19th R, 2WN (west side.)
		top drilled
	slate	
7		not visible
3 1/2"	60%	dull
		m.c.
3 1/2"	70%	1/4" m.c.
2 1/2"	60%	m.c.
2"	50%	- - -

Collector.

Mine. Zeigler Co.

Coal: Survey No.

Index No. 2-27-4

