

FIELD NOTES

Illinois State Geological Survey

(2106. 1a)

July 11, 1932.

Shaft record of mine in the SE corner of section 6.
SE edge of Ipava.

Surface

10' Clay

15' Shale - soapstone

1' Nodular limestone cap rock

4' Slate

5'10" No. 4 Coal

2'6" Underclay

1'+ Fresh-water limestone

Base of shaft

Note: The above record was received from the
driller of the shaft.

By R. McGehee

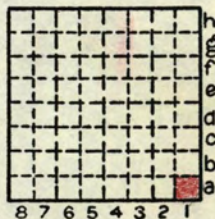
Date 1932

Quadrangle Vermont

County Fulton

Sec. 6

T. 1N R. 2E



FIELD NOTES
Illinois State Geological Survey

(2106.1bd)

Mine at Ipava:

38' to top of coal. About 5' coal.

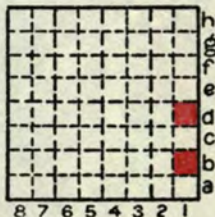
Coal extends W. about 500', N. to highway, S. about 3/8 mile. In all directions becomes unworkable on account of poor roof.

Old mine across railroad to N. said to have had two beds. Lower one 4' with concretions about 4'-5' below upper (#5). Hit in sump.

By G.H. Cady? Date _____

Quadrangle Vermont

County Fulton Sec. 6 T. 4N R. 2E



FIELD NOTES
Illinois State Geological Survey

See map no. 4107 d5-66

(2106.)

July 30, 1932.

Mine at Ipava

38' shaft to coal

18' above this coal is another 5' seam.

concretions - fresh-water limestone encountered
in underclay in sumps

Mine N. of road at Ipava

Below coal is 3' of underclay and then another
coal seam a little over 3' thick

Water well drilling in park - 35' to "cap rock"

Information from Red Brewer of Ipava.

By J.M.Weller Date 1932

Quadrangle Vermont

County Fulton Sec. 6 T. 4N R. 2E

