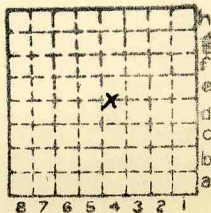




Form 180

CW & V #2



Sec. 24

T. 31 ~~8~~

R. 3 ~~W~~

Index No.

✓

Mine index 2608



Mine originally operated by: (1) *Chicago Wilmington - Vermillion*
 Date *1883* *Streator*

Original name or number: *# 2*
 Illinois Coal Report *p.*

LATER OPERATORS

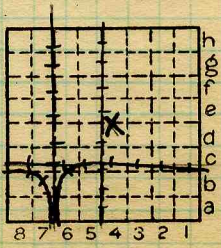
Date	Operator	Name or No.
<i>2</i>	<i>1894 Ab'd'd.</i>	
<i>3</i>		
<i>4</i>		
<i>5</i>		
<i>6</i>		
<i>7</i>		
<i>8</i>		
<i>9</i>		
<i>10</i>		
<i>11</i>		
<i>12</i>		
<i>13</i>		
<i>14</i>		

* Also owners # See ownership sheet

Railroad, Wagon, Idle, Abandoned

IDENTIFICATION

County No. Coal No.
 Quad. *80* Part *6*
 County *LASALLE*



Sec. *24*
 T. *31* N. S.
 R. *3* E. W.
 Index No.

2824

COAL MINE OPERATOR