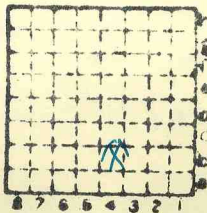


ISGS Index ~~No.~~ No. 170.

W. Stroud CC.

L. 77.

551



Sec.

6

T.

9

N.
S.

R.

35

E.
W.

Index No.



Mine originally operated by: (1)

William Stroud Coal Co.

Date

1909+

L-77

Original name or number:

Illinois Coal Report

p.

LATER OPERATORS

Date

Operator

Name or No.

2

3

4

5

6

7

8

9

10

11

12

13

14

* Also owners

#See ownership sheet

Railroad, Wagon, Idle, Abandoned

Strip Mine

LOCAL MINE

IDENTIFICATION

L-77

County No.

551

Coal No.

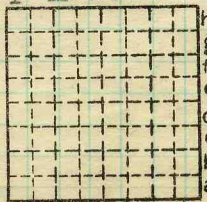
6

Part

Quad. W. Frankfort

County

Williamson



Sec. 6

T. 9

N. S.

R. 3

E. W.

Index No.

0706 b4

COAL MINE OPERATOR



LOCATION AND ELEVATION

Location: side R. R. side R. R. side Highway No.

on top. map Location sheet

Elevation: Method, 1. Est. () ft. 2. Inst. (kind) ft.

By Data sheet DEPTH Authority To coal ft. Authority Rail to rail ft. Top of coal above rail. (Est. Rule) ft. To coal ft.

ALTITUDE OF TOP OF COAL

By estimated data By instrumental data 476 ft.

Thickness 96 in. Max. in. Min. in. Aver. in.

GEOLOGICAL DATA

Mine notes, date Coop No. Pyr. inv. Coal Ash inv.

CHEMICAL DATA

Analyses Face U. I. B. M. Others Car U. I. B. M. Others Org. Sulf U. I. B. M. Others Ash fusion U. I. B. M. Others Ash anal. U. I. B. M. Others U. I. B. M. Others

Classification

Misc. tests: Coking. Cleaning Boiler

Published descriptions:--

Railroad, Wagon, Idle, Abandoned

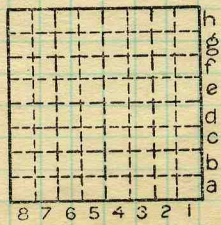
LOCAL MINE

IDENTIFICATION

County No. 551 Coal No. L-77

Quad. W. Frankfort County Williamson

Part 6



Sec. 6 T. 9 N. S. R. 3 E. W. Index No. 0706 b4

COAL MINE LOCATION AND DATA



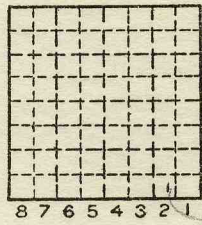
Location and Elevation Data

Location: Exact Approximate
 (Approximate only if no trace of record of original exists)
 Location by Dept Mines & Minerals
 Date..... Notebook No..... Page.....
 Looseleaf ref.....
 Map files No.....

Description of Location

Position in sec., 1/4 sec., 40 acres

.....feet from North line
feet from East line
feet from South line
feet from West line



Sec. 6
 T 9 S.
 R 3 E.
 W.

1939

Other description: **SPSE**
L-77
 SW 1939
 SE

Farm.....
 No.....
 Company **W.N. Stroud**
 No.....
 County No. **551**

Elevation.....ft.

By.....

Method: Level, transit, alidade, hand level

Elevation of.....

Height of point above ground.....

Date..... Notebook..... P.....

Looseleaf ref.....

Map files No.....

Description of item: (drill hole, mine, etc.) **strip Mine**

22' to 45' dia. 4 1/2" or 7 1/2" of #6 coal
 County **Williamson** Quadrangle **WFrankfort** Index No. **0706 b4**

Operator, *W. Stroud* Date *July 25, 1921*
 Mine, *Strip pit* Sec. *6* T. *95 R. 3E*
 Located, *2 1/2 N* miles from *Marion*
 Location in mine, *Face at S.W. corner of pit*

GRAPHIC SECTION		DESCRIPTION OF SECTION (AT POINT SAMPLED)		
In.	No.	No.	(Note character and thickness of roof)	Inches
			<i>Clayey till App 15'</i>	
		<i>1</i>	<i>Coal</i>	<i>16</i>
		<i>2</i>	<i>Pyrite</i>	<i>1/8</i>
		<i>3</i>	<i>Coal</i>	<i>6</i>
		<i>4</i>	<i>Charcoal</i>	<i>1/2</i>
		<i>5</i>	<i>Coal</i>	<i>6</i>
		<i>6</i>	<i>Charcoal</i>	<i>1/2</i>
		<i>7</i>	<i>Coal</i>	<i>26 1/2</i>
		<i>8</i>	<i>Pyrite</i>	<i>3/8</i>
		<i>9</i>	<i>Coal</i>	<i>23 1/2</i>
		<i>10</i>	<i>BB</i>	<i>1-2</i>
		<i>11</i>	<i>Coal</i>	<i>18-20</i>
			<i>Floor clay</i>	
			<i>Tap 78 1/2</i>	
			(Note character and thickness of floor)	
			Total thickness of coal.	<i>100 1/2</i>

Condition, *Damp* Time, hr. *40* min.
 Wt. Gross, *32* lbs. Net, *7* lbs.
 What Nos. shipped by Co.?
 Excluded from sample: No. *8, 10, 11*
 Sample represents *79 1/8* in. tons.
 Impurities? How do they occur?

Sample No. *W-21-69* Can No. *17707* Lab. No. *?*
 Collector, *Wilson* Coal: Survey No. *6*
 Mine, *Stroud Strip Pit* Co. *Williamson* Index No. *0706*
 R.—COAL SAMPLE SHEET.