



Mine originally operated by: (1)

Date

Original name or number:

Illinois Coal Report

p.

Auer #20

LATER OPERATORS

Date

Operator

Name or No.

2 Numerous local shafts and slopes 18'-60' to coal No 6 about 6'0"

3 2 shafts 240' to #2 coal 3'0"-3'6"

4 all abd.

J.C.Q. per Auer.

- 6
7
8
9
10
11
12
13
14

* Also owners

#See ownership sheet

Railroad, Wagon, Idle, Abandoned

LOCAL MINE IDENTIFICATION

County No.

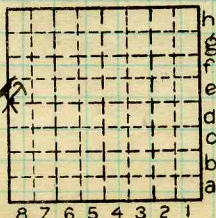
Coal No.

Quad.

Part

County

Macoupin



Sec. 2

T. 9 N.

R. W.

Index No.

COAL MINE OPERATOR

1302