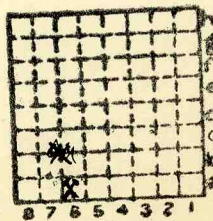




Form 180

FRENCH CC



Sec. 3

T. 31

R. 3

Index No.

✓ Mine index 670



Mine originally operated by: (1)

Date

1930 L-3

French Coal Co

R. F. D. 4 Streator, Ill.

Original name or number:

Illinois Coal Report

D. operator's report 1948

AUER # 21

LATER OPERATORS

Date

Operator

Name or No.

2 1948

2

3

4

5

6

7

8

9

10

11

12

13

14 Sect. 3 T31N R3E  
Location shown in SW SE (1948)

\* Also owners

# See ownership sheet

Railroad, Wagon, Idle, Abandoned

1953 shaft Mine

90' (1948) To coal LOCAL MINE

IDENTIFICATION

L-3

County No.

Coal No.

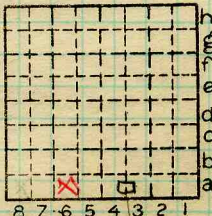
□ 6+7

Quad.

Part

(1948)

8' 0"



Sec. 3

T. 31

N.

R. 3

E.

Index No.

County

LASALLE

COAL MINE OPERATOR

2803A6





( Sheets ) COAL PRODUCTION ( Sheet )

Period				Tons	
Mo.	Day	Year	Mo.	Day	Year
1939				23	209
1940				23	105
1941				27	057
1942				28	105
1943				30	247
1944				22	893
1945				23	532
1946				19	697
1947				15	862
1948				14	341
'49				12	243
'50				21	007
'51				11	776
'52				7	605
1953				6	120
1954				10	178
1955	idle after JANUARY				100
1956					idle

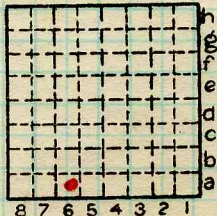
SUMMARIES

No.	to	No.

Railroad, Wagon, Strip, Idle, Abandoned Shaft mine

IDENTIFICATION

County No. \_\_\_\_\_ Coal No. 1755  
 Coal Report No. L-3  
 Quad. \_\_\_\_\_  
 County \_\_\_\_\_



Sec. 3  
 T. 31 N.  
 R. 3 E.  
 Index No.

**Lasalle** COAL MINE—PRODUCTION  
 ILLINOIS GEOLOGICAL SURVEY, URBANA

**2803 A6**







Operator, **FRENCH COAL Co (John McNeil)** Date **JUNE 20, 1934**  
~~Mine~~ **Streator, SW** Sec. **3** T. **3N.**, R. **3E**  
 Location in mine, **450 N., 300 E.** **31N.**  
 Room worked in **March**

GRAPHIC SECTION		DESCRIPTION OF SECTION (AT POINT SAMPLED)		
In.	No.	No.	(Note character and thickness of roof)	Inches
			Roof: Gray shale	
29.5	1		Coal, banded, bright	29 1/2
			2. Pyrite band	1/16
			3. Coal, banded, bright	18 1/2
			* 4 Clay + coal	1 1/2
1/16	2		Clay - 1/8 Coal 5/8 clay 3/8 coal 1/4 clay 1/8 } (Out.)	
18.5	3		5 Coal. bright banded	8 3/8
			6 Fusain	1/4
1.5	4		7 Coal bright banded	3 3/4
8 3/8	5		* 8 Fusain Clay + pyrite (out)	1 1/4
3/4			9 Coal bright banded	8 7/8
3 3/4	6		* 10 Pyrite (out)	1
1 1/4	7		11 Coal bright banded	26
8 7/8	8		(Note character and thickness of floor)	
1	9		Total thickness of coal. <b>Tape = 99 1/4</b>	
26"	10		Condition, <b>Dry</b> Time, hr. min. <b>15</b>	
			Wt. Gross, lbs. Net, lbs.	
			What Nos. shipped by Co.?	
			Ground <b>Quartered in Laboratory</b>	
			Excluded from sample: No. <b>4, 8, 10 (3 3/4)</b>	
			Sample represents <b>3 3/4</b> 95 1/4 in. tons.	
			Impurities? How do they occur? <b>Bands</b>	
			Thickness sampled <b>95 1/4"</b>	

(1 division=3 in.)

Sample No. Can No. **60 = 1082** Lab. No.  
 Collector, **GH Cady, ET Benson** Coal: Survey No. **6**  
 Mine, **French Coal Co** Co. **La Salle** Index No. **2803**  
**R.—COAL SAMPLE SHEET.**





Operator, **FRENCH COAL CO** (John McNeil) Date **JUNE 20, 1934**  
 Mine, **STREATOR SW Sec. 3 T. 31 N R. 3 E.**  
 Location in mine, ~~MAIN~~ **600' N. 300' W shaft**  
 Room worked in **March**

GRAPHIC SECTION		DESCRIPTION OF SECTION (AT POINT SAMPLED)		
In.	No.	No.	(Note character and thickness of roof)	Inches
		1	Coal, bright, banded	50 <sup>3</sup> / <sub>4</sub>
		*2	Clay band (out)	53 <sup>1</sup> / <sub>2</sub>
		3	Coal bright banded	53 <sup>1</sup> / <sub>2</sub>
		*4	Pyrite lens 0 - (out)	53 <sup>1</sup> / <sub>2</sub>
		5	Coal bright banded	53 <sup>1</sup> / <sub>4</sub> <sup>1</sup> / <sub>8</sub>
		6	Pyrite band	8 <sup>1</sup> / <sub>2</sub>
		7	Coal	1
50 <sup>3</sup> / <sub>4</sub>	1	*8	Bone + Mother coal Bone <sup>5</sup> / <sub>16</sub> Fusain <sup>5</sup> / <sub>16</sub> Bone <sup>9</sup> / <sub>16</sub>	4 <sup>1</sup> / <sub>4</sub>
		9	Coal bright banded	1
		*10	Clay	14 <sup>3</sup> / <sub>8</sub>
		11	Coal bright banded	<sup>1</sup> / <sub>16</sub>
		12	Pyrite band	12 <sup>1</sup> / <sub>2</sub>
		13	Coal	
53 <sup>1</sup> / <sub>2</sub>	2			
53 <sup>1</sup> / <sub>2</sub>	3			
53 <sup>1</sup> / <sub>8</sub>	4			
53 <sup>1</sup> / <sub>8</sub>	5			
8 <sup>1</sup> / <sub>2</sub>	6			
1	7			
4 <sup>1</sup> / <sub>4</sub>	8			
1"	9			
14 <sup>3</sup> / <sub>8</sub>	10			
<sup>1</sup> / <sub>16</sub>	11			
12 <sup>1</sup> / <sub>2</sub>	12			
	13			
			(Note character and thickness of floor)	
			Total thickness of coal. <b>TAPE</b>	<b>104</b>
			Condition, <b>Dry</b>	Time, hr. <b>15</b> min.
			Wt. Gross, lbs.	Net, lbs.
			What Nos. shipped by Co.?	
			Excluded from sample: Nos. <b>2, 4, 8, 10. (3")</b>	
			Sample represents <b>101</b> in. tons.	
			Impurities? How do they occur?	

(1 division = 3 in.)

**Ground and Quartered in Laboratory Next day**

Sample No. \_\_\_\_\_ Can No. **14 = 1076** Lab. No. \_\_\_\_\_  
 Collector, **G. H. Cady, E. T. Benson** Coal: Survey No. **6**   
 Mine, **French Coal Co** Co. **La Salle** Index No. **2803**  
**R.—COAL SAMPLE SHEET.**





Operator, **FRENCH COAL CO. (John McNeil)** Date **June 20, 1934**  
 Mine, **STREATOR SW.** Sec. **3** T. **31N**, R. **3E**  
 Location in mine, **MAIN N. 800' N., 25' E of shaft**  
 Room worked in **March**

GRAPHIC SECTION		DESCRIPTION OF SECTION (AT POINT SAMPLED)		
In.	No.	No.	(Note character and thickness of roof)	Inches
		1	Coal	8 1/4
		2	Pyrite	4/8
		3	Coal	1 5/8
		4	Fusain	3/16
		5	Coal	7 5/8
		6	Fusain	4/8
		7	Pyrite streak	
		8	Coal	1/2
		9	Pyrite	4/8
		10	Coal	9
		11	Pyrite	4/8
		12	Coal	4 3/8
		*13	Pyrite lens <span style="margin-left: 20px;">4 1/4 to 1/8 to</span>	1/4
		14	Coal	15 7/8
		*15	Clay band	7/8
		16	Coal	13 1/4 4/8
		17	Pyrite	
		18	Coal	10 1/2
		*19	Pyrite lens	1
		20	Coal 18-24" <span style="margin-left: 20px;">0 -</span>	23 3/4
		(Note character and thickness of floor)		
		Total thickness of coal.		<b>Tap</b> 101 3/4
<b>Underclay</b>				
		Condition, <b>Dry</b>	Time, hr. <b>15 min.</b>	
		Wt. Gross, <b>50</b> lbs.	Net, lbs.	
What Nos. shipped by Co.?				
Excluded from sample: Nos. <b>13, 15, 19</b> <span style="float: right;">2 1/8</span>				
Sample represents <b>99 5/8</b> in. tons.				
Impurities? How do they occur?				

(1 division=3 in.)

**Ground and Quartered in Laboratory next day**

Sample No. Can No. **16 = 1075** Lab. No.  
 Collector, **GHCady, E.T. Benson** Coal: Survey No. **6**   
 Mine, **French Coal Co** Co. **LaSalle** Index No. **2803**  
**R.—COAL SAMPLE SHEET.** (12759—1000—2-29)



Location and Elevation Data

Location: Exact Approximate

(Approximate only if no trace of record of original exists)

Location by Dept Mines & Minerals

Date Notebook No. Page

Looseleaf ref.

Map files No.

Description of Location

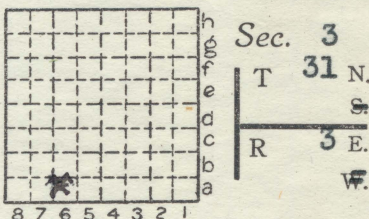
Position in sec., 1/4 sec., 40 acres

.....feet from North line

.....feet from East line

420 feet from South line

1520 feet from West line



Other description: L-3

Farm.....

No.....

Company French Coal Co.

1941, 1942

No.....

County No.....

Prod 1940 23, 105

Elevation..... ft.

By.....

Method: Level, transit, alidade, hand level

Elevation of.....

Height of point above ground.....

Date Notebook P

Looseleaf ref.....

Map files No.....

Description of item: (drill hole, mine, etc.) Shaft Mine

98' to 9' of #7 coal LOCAL MINE

County Quadrangle Index No.

28294-5M-5-5-37

Streator

2803 A6

La Salle