

Location and Elevation Data

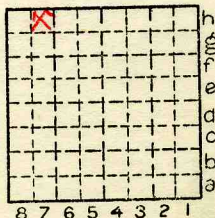
Location: Exact Approximate
(Approximate only if no trace of record of original exists)
Location by microfilm map
Date..... Notebook No..... Page.....
Looseleaf ref.....
Map files No.....

Description of Location

Position in sec., 1/4 sec., 40 acres

Slope:
423' feet from North line
..... feet from East line
..... feet from South line
994' feet from West line

sec. 27



Sec. 27
T 19 N.
R 12 W.

Other description: L-217

airshaft: 802' NL sec. 27
505' WL

Farm.....
No.....
Company.....
W.W. Coal Co.
No.....
County No.....

Elevation 630' ft.
By 95'-105' to 5'10" No. 7 (ool)

Method: Level, transit, alidade, hand level

Elevation of.....
Height of point above ground.....
Date..... Notebook..... P.....
Looseleaf ref.....

Map files No.....
Description of item: (drill hole, mine, etc.)..... SLOPE

County Vermilion Quadrangle Index No. 18 27 H 7





Location and Elevation Data

Location: Exact Approximate
 (Approximate only if no trace of record of original exists)
 Location by G.M.W. 1.5 m
 Date 1945 Notebook No. 667 Page 21-2237
 Looseleaf ref.
 Map files No. 14-92-42C

Description of Location

Mouth of slope Position in sec., 1/4 sec., 40 acres

feet from North line

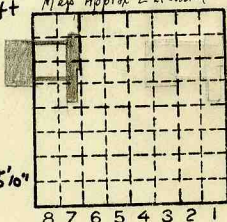
Airshaft

Map Approx. Extended Sept. 1949

4325 feet from East line 4840

4675 feet from South line 4575

feet from West line 64 (530) 5' 10"



Sec. 27
 T 19 N.
 R 7.
 12 W.

L-217
 Other description: New 1943

W.-W Coal Co. # 1943
Blue Lake Coal Co. #2 1944
Blue Lake Coal Co. - Walter Mauck 1946
No. 7 well
#7 - 60' ± (522) 5' 10"
opened 7-2-43 in tabulations

Farm
 No.
 Company Blue Lake Coal Co
 No. Walter Mauck
 County No. 514
Airshaft Co. # = 819

Elevation 582.4 ft.
 By G.M.W

Method: Level, transit, alidade, hand level

Elevation of Mouth of slope
 Height of point above ground
 Date Notebook P.
 Looseleaf ref.

Map files No.
 Description of item: (drill hole, mine, etc.) Slope mine
Active 1947
 County Vermilion Quadrangle Danville Index No. 1827 H7



FORM 180 W

Production For: Blue Lake C.C.

mine index B11

Year	Production	Year	Production
1943	W.W. C.C. 150		
1944	W.W.C.C. No.2 15,211		
1945	Blue Lake C.C. 37,997		
1946	32,676		
1947	36,526		
1948	40,158		
1949	19,415		
1950	15,617		
1951	11,345		
1952	7,031		
1953	9,620		
1954	8,948		
1955	11,293		
1956	10,195		
1957	12,752		
1958	10,415		
1959	12,184		
1960	12,566		
1961	10,245		
1962	9,312		
1963	10,513		
1964	7,193		
1965	2,394		

343,756 total tons



Mine originally operated by: (1)

Date

1943

W-W COAL Co.

Original name or number:

No. 2.

Illinois Coal Report

p.

LATER OPERATORS

Date	Operator	Name or No.
2 1944	BLUE LAKE COAL Co	No. 2.
3 1946	BLUE LAKE COAL Co.	WALTER MAUCK
4 1947	BLUE LAKE CC.	
5 1949	W. Mauck, Blue Lake CC.	
6 1950	BLUE LAKE CC.	
7 1952	Blue Lake CC " Mauck	
8 1953	Blue Lake CC.	
9 1956	" " " , Inc.	
10 1965	Blue Lake Coal Co.	
11		
12		
13		
14		

*Also owners

#See ownership sheet

Railroad, Wagon, Strip, Idle, Abandoned

SLOPEMINE

Local mine

IDENTIFICATION

County No. _____

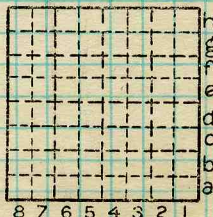
Coal No. _____

Coal Report No. L-217

7

Quad. DANVILLE

County VERMILION



Sec. 27

T. 19 N.

R. 12 W.

Index No.

COAL MINE OPERATOR

182747



Mine originally operated by: (1)

Date 1943

W. W. Coal Co.

(April 1944) Original name or number:
Illinois Coal Report

p. operator's report 1948

LATER OPERATORS

Date	Operator	Name or No.
2 <u>1944</u>	<i>Blue-Lake Coal Co.</i>	
3	<i>Catlin, Ill.</i>	
4 <u>1946</u>	<i>Blue Lake Coal Co,</i>	<i>Walter Mauck</i>
5 <u>1952</u>	<i>Blue Lake Coal Co.,</i>	
6		
7		<i>40,158 tons</i>
8		
9		
10		
11		
12		
13	<i>See Vermilion Mine Book</i>	
14	<i>Location shown in SW SW (1948)</i>	
	<i>" " E 7 - JAH - filed 1957</i>	

*Also owners #See ownership sheet

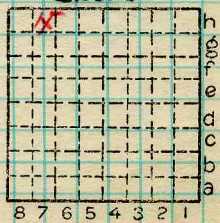
125' (1948) To coal

Railroad, Wagon, Strip, Idle, Abandoned

SLOPE

IDENTIFICATION

County No. _____ Coal No. 7
 Coal Report No. L-217
 Quad. (1948) 5' 9"
 County Vermilion



Sec. 27
 T. 19 N.
 R. 12 W.
 Index No. 1827H7

COAL MINE OPERATOR

Blue Lake Coal Co., Catlin, Illinois (Vermillion)

Roof - grey shale

Bright coal	7.5"
Fusain band	0.5"
Bright coal	20.5"
Fusain band	0.5"
Bright coal	20.0"
Band containing pyrite nodules up to 2" across	2.0"
Bright coal	9.5"
Band containing pyrite nodules up to 4" across	4.0"
Bright coal	1.0"
Shale band	1.0"
Bright coal	5.0"
	71.5"
Underclay - - - - -	

Channel sample cut on May 27, 1957

Sample taken 50' north on the new main north off the old main west. Approximately 1000' W. of bottom.

This mine was sold to a Co-op of 10 men by Walter Mauck. (In May, 1952) The mine now belongs to 8 men and was incorporated 1 year ago.

President - Mr. Chas. Haas

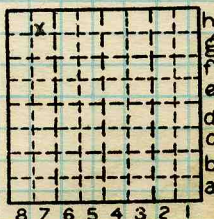
Sec. & Treas. - Mr. Wilber Mauck

- J.A. Harrison 5/27/57

By _____ Date _____

Quad. _____ Part _____

County _____



h Sec. 27
g T. 19 N.
f S.
e E.
d R. 12 W.
c Index No.
b
a H7



ILLINOIS GEOLOGICAL SURVEY, URBANA

Room 21 - off 1st W. Sample #1 Entry

Total thickness of coal 71 1/2"

Roof: Gray shale with plant fossils, soft pyritic, slickensided

Coarse clarain	1	3/4" X	1 3/4"
Fusain		1/4"	2"
Coarse clarain with vitrain bands up to 1/2"	2	1/4"	4 1/4"
Fusain Band		1/4"	4 1/2"
Medium banded clarain with numerous fusain partings up to 1/16"	10"		14 1/2"
Fusain band, relatively soft but containing some mineral matter		1/2"	15"
Bright banded, medium clarain	2	1/2"	17 1/2"
Pyrite layer		1/16"	17 9/16"
Medium-fine banded clarain with numerous fusain bands up to 1/16"	10	7/16"	28"
Fusain zone, with lenses of vitrain up to 1/16"	1	1/2" 26	29 1/2"
Medium clarain with pyrite along the cleats	10"		39 1/2"
Zone of fusain, pyrite balls & lenses & clay: fusain mineralized in part & grades laterally into pyrite balls up to 1 1/2" to 2"	2	1/2" 5	42"

(Place where channel sample taken free of pyrite & no part of channel left out except shale band)

Clarain fine with number of dark 24" hard bands, possibly duro-clarain 66"

Shale band (removed from sample) 3/4" 66 3/4"

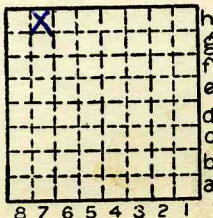
Fine banded clarain zone with Blue Lake ~~mine~~ Coal Co

cont. on next page

By JAH & P.B. Date 5/3/60

Coal Rept. # L-217 Quad. Part.

County Vermilion



h
g
f
e
d
c
b
a

Sec. 2747
T. 19 N.
R. 12 W.

ILLINOIS GEOLOGICAL SURVEY, URBANA

(Room 21 - Sample #1)

page 2 of 2

Zone with interlaminations
of vitrain & pyrite, pyrite
up to 1/16"

~~60"~~

Fine banded clarain

2 1/2"

71 1/2"

End of section Fire Clay

Roe

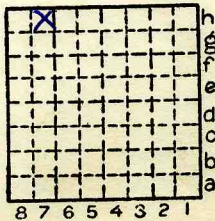
Blue Lake Coal Co.

By JAH+DB Date 5/3/60

Coal Rept. #L-217

Quad..... Part.....

County Vermilion



Sec. 27H7

T. <u>19</u>	N. *
R. <u>12</u>	W. *

ILLINOIS GEOLOGICAL SURVEY, URBANA

No Room

Second West Entry, Sample 2

Roof: Shale: light gray, relatively soft, slicken-sided, with pyrite nodules

Total thickness 68" of coal

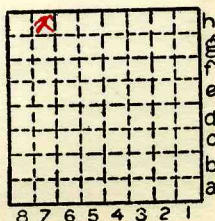
Fine banded clarain	6 $\frac{1}{4}$ "	6 $\frac{1}{4}$ "
Fusain, non-mineralized	$\frac{1}{4}$ "	6 $\frac{1}{2}$ "
Medium banded clarain	4 $\frac{1}{2}$ "	11"
Fusain, soft, non-mineralized	$\frac{1}{2}$ " <i>3/4"</i>	11 $\frac{1}{2}$ "
Medium banded clarain with numerous fusain bands up to 1/16"	14"	25 $\frac{1}{2}$ "
Fusain band, non-mineralized	$\frac{1}{2}$ " <i>1/4"</i>	26"
Medium to coarse banded clarain	11 $\frac{1}{2}$ "	37 $\frac{1}{2}$ "
Fusain band, partly mineralized but relatively soft	1" <i>2/4"</i>	38 $\frac{1}{2}$ "
Fine banded clarain	1 $\frac{1}{2}$ "	40"
Dull band (Duro-clarain?)	1"	41"
Fine banded clarain with darker bands of duro-clarain	10"	51"
Pyrite band in zone that grades laterally into pyrite nodules up to 2 $\frac{1}{2}$ " in thickness (Pyrite band removed)	$\frac{1}{2}$ "	51 $\frac{1}{2}$ "
Fine banded clarain	12"	63 $\frac{1}{2}$ "
Shale band (removed from sample)	1"	64 $\frac{1}{2}$ "
Fine banded clarain	3 $\frac{1}{2}$ "	68"

Bottom of section fire clay

Block samples taken from second West Entry

*Blue Lake ^{Coal} ~~Mine~~ Co.*By *JAH & DB* Date *5/3/60**Coal Rept. # L-217*

Quad..... Part.....

County *VERMILION*Sec. *27H7*

T.	N.
<i>19</i>	<i>S.</i>
R.	<i>W.</i>
<i>12</i>	<i>W.</i>

8 7 6 5 4 3 2 1

ILLINOIS GEOLOGICAL SURVEY, URBANA

Room 23 off second west entry, sample #3

Roof: shale-light gray, fossiliferous, soft, slickensided, poorly bedded, frequent pyrite nodules along contact with coal

Total coal thickness 68"

Medium to coarse band clarain with vitrain bands up to 3/4" thick	8"	8"
Fusain bands	1/4"	8 3/4"
Coarse banded clarain	6 1/2"	14 3/4"
Fusain, relatively soft but somewhat mineralized	1/2"	15 1/4"
Fine banded clarain	1 3/4"	17"
Fusain, mineralized	1/4"	17 1/4"
Medium banded clarain with numerous fine bands of fusain up to 1/16", & a good deal of calcite on the cleating	11"	28 1/4"
Fusain	1/2"	28 3/4"
Fine banded clarain	8"	36 3/4"
Zone containing fusain, clarain, & pyrite band (latter up to 1/4") (Pyrite band removed)	2"	38 3/4"
Medium to fine banded clarain with a number of fusain bands up to 1/16"	9 1/2"	48 1/4"
Fusain band	1/4"	48 1/2"
Fine banded clarain with dull band of duro-clarain (?)	8"	56 1/2"
Fusain band, relatively soft, some mineral matter	1/4"	56 3/4"
Fine clarain	4"	60 3/4"
Shale, Gray (removed)	1"	61 3/4"
Fine clarain	6 1/4"	68"

Bottom of section fire clay

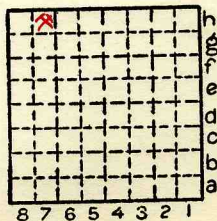
Blue Lake Coal Co.

By JAH + DB Date 5/3/60

Coal Rep # L-217

Quad..... Part.....

County VERMILION



Sec. 27H7

T.	19	N.
R.	12	W.

BLUE LAKE MINE

- ~~L-217~~

Coal Rept # L-217

h7- Sec. 27, 19N, 12W

145' to coal - 11

Vermilion County

May 3, 1960
Channel Samples
Samplers -

Harrison & Berggren.

RM 21 OFF THE FIRST WEST ENTRY

TOTAL THICKNESS OF COAL 71 1/2"

	PAGE 2 OF PAGES	
RM 21 - SAMPLE #1 ROOF: GRYSH W/ PLANT FSSLS, SFT CRSE CLARAIN	1 3/4"	1 3/4"
FUSAIN	1/4"	2"
CRS CLARAIN W/ UTRAIN BND UP TO 1/2"	2 1/4"	4 1/4"
FUSAIN BND	1/4"	4 1/2"
MED BND CLARAIN W/ NUM- EROUS FUSAIN FRINGS UP TO 1/16"	10"	14 1/2"
FUSAIN BND, RELATIVELY SFT, BUT CONTAINING SOME MINERAL MATTER	1/2"	15"
TRT BND, MED CLARAIN	2 1/2"	17 1/2"
PYRITE LAYER	1/16"	17 9/16"
MED - FNE BND CLARAIN W/ NUMEROUS FUSAIN BND UP TO 1/16"	10 7/16"	28"
FUSAIN ZONE, W/ LENSES OF UTRAIN UP TO 1/16"	1 1/2"	29 1/2"
MED CLARAIN W/ PYRITE ALONG THE CLEFTS	10"	39 1/2"
ZONE OF FUSAIN, PYRITE BALLS & LENSES & CLAY; FUSAIN MINERALIZED IN PART & GRADES LAT- ERALLY INTO PYRITE BALLS UP TO 1 1/2" TO 2"	2 1/2"	42"

[PLACE WHERE CHANNEL
SNPL TAKEN FREE OF PYRITE
& NO PART OF CHANNEL LEFT
OUT] except shale band

RM 21 - SAMPLE 1

PAGE 3 OF PAGES

CLARAIN, FNE W/NO. OF DKK HD BND, POSSIBLY DURO-CLARAIN 24" 66"

SHT BND [REMOVED FR SMPLE] ~~2~~ 3/4" 66 3/4"

~~FNE BND CLARAIN 4 3/4" 71 1/2"~~

FNE BND CLARAIN 2 1/4"

ZONE W/INTERLAMINATIONS OF VITRAIN & PYRITE, PYRITE UP TO 1/16" 69"

FNE BND CLARAIN 2 1/2" 71 1/2"

END OF SECTION
Five clay

2nd WEST ENTRY SAMPLE 2 PAGE 4 OF PAGES

ROOF: SH; LGT GRAY REL. SFT,
SLKNSDD, W/PYRITE NODS

TOTAL THICKNESS 68" OF COAL

FNE BNDD CLARAIN	6 ¹ / ₄ "	6 ¹ / ₄ "
FUSAIN, NON-MINERALIZED	¹ / ₄ "	6 ¹ / ₂ "
MED BNDD CLARAIN	4 ¹ / ₂	11"
FUSAIN, SFT, NON-MINERALIZED	¹ / ₂ "	11 ¹ / ₂ "
MED BNDD CLARAIN W/NUM- EROUS FUSAIN BNDS UP TO ¹ / ₁₆ "	14 ¹ / ₂ "	25 ¹ / ₂ "
FUSAIN BND, NON-MINERALIZED	¹ / ₂ "	26"
MED TO CRSE BNDD CLARAIN	11 ¹ / ₂ "	37 ¹ / ₂ "
FUSAIN BND, PRTLY MINERALIZED BUT REL. SFT	1"	38 ¹ / ₂ "
FN BNDD CLARAIN	1 ¹ / ₂ "	40"
DULL BND (DURO-CLARAIN?)	1"	41"
FNE BNDD CLARAIN W/BKR 10" BNDS OF DURO-CLARAIN		51"
PYRITE BND IN ZONE THAT GRDS LATERALLY INTO BR. NODS UP TO 2 ¹ / ₂ " IN THICKNESS (PYR. BND RE- MOVED)	1 " ¹ / ₂ "	51 " 51 ¹ / ₂ "
FN BNDD CLARAIN	12"	63 ¹ / ₂ "
SH BND (REMOVED BR. SAMPLE)	1"	64 ¹ / ₂ "

2ND W. ENTRY SAMPLE 2 PAGE 5 OF PAGES
FN BLODD CLARAIN 3 1/2" 68"

BOTTOM OF SECTION

Fine Clay

BLOCK SAMPLES TAKEN FROM
2ND W. ENTRY

ROOF: SH - LGT GRN, FSLERS,
SFT, ~~SH~~, SLICKENSIDED,
POORLY BDD, FREQ.
PYR. NODS ALONG CON-
TACT W/ COAL

TOTAL COAL THICKNESS 68"

MED TO CRSE BDD CLARAIN W/ ULTRAFINE BDD UP TO 3/4" THICK	8"	8"
FUSAIN BDD	1/4"	8 1/4"
CRSE BDD CLARAIN	6 1/2"	14 3/4"
FUSAIN, REL SFT BUT SOMEWHAT MINERALIZED	1/2"	15 1/4"
FN BDD CLARAIN	1 3/4"	17"
FUSAIN, MINERALIZED	1/4"	17 1/4"
MED BDD CLARAIN W/ NUMEROUS FN BDD OF FUSAIN UP TO 1/16" & A GOOD DEAL OF CALCITE ON THE CEILING	11"	28 1/4"
FUSAIN	1/2"	28 3/4"
FN BDD CLARAIN	8"	36 3/4"
ZONE CONTAINING FUSAIN CLARAIN, ^{1/4"} PYRITE BDD (LATTER UP TO 1/4") (PYR. BDD REMOVED)	2"	38 3/4"

MED TO FN BND CLARAIN 9 1/2" 48 1/4
 W/A NO. OF FUSAIN BUDS
 UP TO 1/16"

FUSAIN BND 1/4" 48 1/2

FN BND CLARAIN W/
 DULL BND OF DURO-
 CLARAIN (?) 8" 56 1/2

FUSAIN BND, REL. SFT.
 SOME MINERAL MATTER 1/4" 56 3/4

FN CLARAIN 4" 60 3/4

SH, GRAY (REMOVED) 1" 61 3/4

FN CLARAIN 6 1/4" 68"

BOTTOM OF SECTION

Five Clay



ILLINOIS GEOLOGICAL SURVEY, URBANA

Blue Lake Coal Company
Vermilion County
Sample #1

Collected by: H. J. Gluskoter
Duffy (Penn. State)

#7 Coal

250' in on 4th W, Main N, Main W.

550' W & 100' S of NE cor., Sec. 28, T. 19 N., R. 12 W.
2nd P.M.

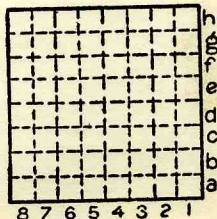
69" of Coal.

Gray shale roof -
underclay bottom

Send analyses to

Wilbur Mauck
Blue Lake Coal Co.
Catlin, Ill.

By.....Date.....
Quad.....Part.....
County.....Vermilion.....



Sec.

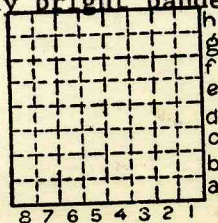
T.	N.
R.	S.
	E.
	W.

ILLINOIS GEOLOGICAL SURVEY, URBANA

8/15/62 *Clarain* *Duffy*

- 4 1/2" Clarain, normally bright banded, calcite and pyrite in cleats.
- 4 1/2 - 4 5/8" Fusain, soft.
- 1' 3/4" Clarain, F:-W.B. Pyrite and calcite in vertical cleats.
- 1' 1 3/4 - 1 7/8" Fusain, 1/8" soft.
- 1' 3" Clarain, fine band.
- 1' 3 1/8" ✓ Fusain and pyrite bands.
- 1' 4" Clarain, normally bright banded.
- 1' 4 1/4" Vitrain band.
- 1' 4 1/2" Pyrite band with pyrite nodule.
- 1' 5 1/2" Clarain, normally bright banded with a few pyrite streaks.
- 1' 5 9/16" Fusain and pyrite bands.
- 1' 6" Clarain, normally bright banded.
- 1' 6 1/16" Fusain, soft.
- 2' 3" Clarain, normally bright banded, few small pyrite and fusain, bands, calcite and pyrite in cleats.
- 2' 3 1/3" Pyrite zone.
- 2' 4 1/2" Clarain, fusain, pyrite, small bands intermixed.
- 3' 7 1/4" Clarain, medium to wide banding, including some vitrain between 1/4" and 1/8".
- 3' 7 3/8" Pyrite and fusain, mineralized.
- 3' 8 1/4" Clarain, normally bright banded.
- 3' 8 1/2" Vitrain.
- 5' 2" Clarain, normally bright banded, calcite and pyrite in cleats.
- 5' 3" Shale, banded, very carbonaceous, in center portion.
- 5' 9" Clarain, normally bright banded.

By HJG & Duffy Date 8/15/62
 Quad..... Part.....
 County Vermilion



Sec.	28
T.	19 N.
	S.
R.	12 E.
	W.



Sample #1

BLUE LAKE COAL COMPANY

Vermilion Co.

8/15/62

SAMPLED By Gluskoter +
Duffy (Penn. State)

#7 coal -

250' in ~~top~~ ON 4th W, MAIN N,
MAIN W.

~~1875~~ 550' W + 100'S of NE
Cor. Sec 28, T19N, R12W
2nd P.M.

69" of coal.

Gray shale roof -
under clay bottom

Send analyses to

Wilbur Mauck
Blue Lake Coal Co.
Catlin, Illinois



BLUE LAKE COAL COMPANY

8/15/1942 69" Seam

GREY SHALE ^{ROOF} FIRE CLAY FLOOR

sampled by Blaskoter + Buffey

2t+ins.

4 1/2" Clarain, N.B.B., Calcite + Pyrite in cleats

4 1/2 - 4 5/8" Fus. - soft

1 1/4" Clarain - Fus. - W.B. - Pyrite + Calcite in vertical cleats

1 1/4" Fus. 1/8" - soft

1 3/8" Clarain - fine bnd.

1 3/8" Fus. + Pyrite Bnd.

1 4" Clarain - N.B.B.

1 4 1/4" Vitrain Bnd.

1 4 1/2" Pyrite Bnd w/ pyrite nodules

1 5 1/2" Clarain, N.B.B. w/ a few pyrite streaks

1 5 9/16" Fus. + pyrite bnd.

1 6" Clarain N.B.B.

1 6 1/16" Fus. - soft

2 3" Clarain - N.B.B. few small pyrite + fusain bnd. Calcite + pyrite in cleats

2 3 5/8" Pyrite zone

2 4 1/2" Clarain fus. py. - sm. bnds intermixed

3 7 1/4" Clarain med. to wide bedding incl. some vitrain between 1/4" + 1/8"

3 7 3/8" Pyrite + fusain, mineralized

3 8 1/4" Clarain, W.B.B.

3 8 1/2" Vitrain

5 2" Clarain, N.B.B. calcite + py. in cleats

5 3 1/2" shale, " bnd. very carb. in ctr. portion.

5 9" Clarain, N.B.B.