



Form 180

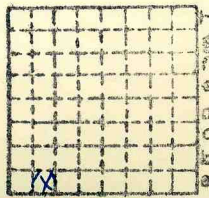
Standard oc

#2

m.i. # 2933

266

Mine Index



Sec. 29

T. 11 N. S.

R. 6 E. W.

Index No.



Mine originally operated by: (1)

Standard Oil Co. #2  
Carlinville

Date 1918.

Original name or number:

Illinois Coal Report p.

LATER OPERATORS

Date Operator Name or No.

2 Standard Oil Co.  
3 (Coal Mining Dept.)

4 (Letter of Nov. 5, 1920 states this mine abd.)

5  
6  
7  
8  
9  
10  
11  
12  
13  
14

\* Also owners # See ownership sheet

Railroad, Wagon, Idle, Abandoned

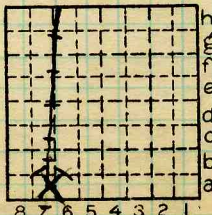
SHIPPING MINE

IDENTIFICATION

County No. 266 Coal No. 6

Quad. 191. Part 6

County Macoupin.



Sec. 29

T. 11 N.

R. 6 W.

Index No.

0829.7A

COAL MINE OPERATOR



( Sheets) COAL PRODUCTION (Sheet )

Period				Tons			
Mo.	Day	Year	Mo.	Day	Year		
<p>(Sunk 1918. At 90' struck 60'-75' sand and gravel with much water. Shaft caved in and abd.)</p>							

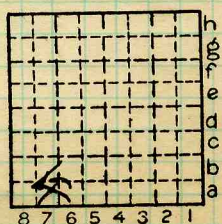
SUMMARIES			
No.	to	No.	

Railroad, Wagon, Idle, Abandoned  
IDENTIFICATION

County No. 266 Coal No. 6

Quad. 191 Part 6

County Macoupin



Sec. 29  
T. 11 N.  
~~S.~~  
R. 6 W.  
~~E.~~  
Index No.

COAL MINE—PRODUCTION

0829.7a



LOCATION AND ELEVATION

Location: side R. R.  
 side R. R.  
 side Highway No.

on top. map Location sheet

Elevation: Method, 1. Est. ( ) \_\_\_\_\_ ft.  
 2. Inst. (kind PT) \_\_\_\_\_ ) 637.3 ft.

By PSM Data sheet

DEPTH

Authority To coal \_\_\_\_\_ ft.  
 Authority Rail to rail \_\_\_\_\_ ft.  
 Top of coal above rail. (Est. Rule) \_\_\_\_\_ ft.  
 To coal 320 ft.

ALTITUDE OF TOP OF COAL

By estimated data \_\_\_\_\_

By instrumental data \_\_\_\_\_

317 ft.

Thickness

Max. in. Min. in. Aver. 84 in.

GEOLOGICAL DATA

Mine notes, date \_\_\_\_\_  
 \_\_\_\_\_

Coop No. Pyr. inv. Coal Ash inv.

CHEMICAL DATA

Analyses Face	U. I.	B. M.	Others
Car	U. I.	B. M.	Others
Org. Sulf	U. I.	B. M.	Others
Ash fusion	U. I.	B. M.	Others
Ash anal.	U. I.	B. M.	Others
	U. I.	B. M.	Others

Classification

Misc. tests: Coking. Cleaning Boiler

Published descriptions:—

Railroad, Wagon, Idle, Abandoned

IDENTIFICATION

County No. 266

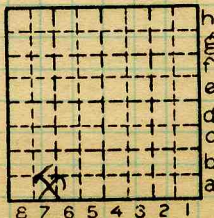
Coal No. 6

Quad. 191

Part 6

County

Macoupin



Sec. 29

T. 11 N.

R. 6 W.

Index No.

0829.7a

COAL MINE LOCATION AND DATA