





### LOCATION AND ELEVATION

Location: side R. R.  
 side R. R.  
 side Highway No.

on top. map Location sheet

Elevation: Method, 1. Est. ( ) \_\_\_\_\_ ft.  
 2. Inst. (kind \_\_\_\_\_) \_\_\_\_\_ ft.

By \_\_\_\_\_ Data sheet \_\_\_\_\_

#### DEPTH

Authority To coal \_\_\_\_\_ ft.  
 Authority Rail to rail \_\_\_\_\_ ft.  
 Top of coal above rail. (Est. Rule) \_\_\_\_\_ ft.  
 To coal \_\_\_\_\_ ft.

#### ALTITUDE OF TOP OF COAL

By estimated data \_\_\_\_\_ ft.  
 By instrumental data \_\_\_\_\_ ft.

#### Thickness

Max. in. Min. in. Aver. in.

#### GEOLOGICAL DATA

Mine notes, date \_\_\_\_\_  
 \_\_\_\_\_  
 \_\_\_\_\_  
 \_\_\_\_\_  
 Coop No. Pyr. inv. Coal Ash inv.

#### CHEMICAL DATA

Analyses Face	U. I.	B. M.	Others
Car	U. I.	B. M.	Others
Org. Sulf	U. I.	B. M.	Others
Ash fusion	U. I.	B. M.	Others
Ash anal.	U. I.	B. M.	Others
	U. I.	B. M.	Others

#### Classification

Misc. tests: Coking. Cleaning Boiler

Published descriptions:—

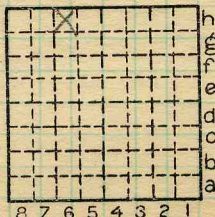
Railroad, Waterloo Idle, Abandoned

#### IDENTIFICATION

County No. 399

Coal No.  6  
 Part 1

Quad. Waterloo  
 County St Clair



Sec. 18

T. 1 S.  
 R. 8 W.  
 Index No.

1218.64  
 19 CH

#### COAL MINE LOCATION AND DATA



Mine originally operated by: (1)

Date

L-40 Grossman Coal Co

1937

Original name or number:

Illinois Coal Report

p. "Old Grossman"

LATER OPERATORS

Date

Operator

Name or No.

- 2
- 3
- 4
- 5
- 6
- 7
- 8
- 9
- 10
- 11
- 12
- 13
- 14

\* Also owners

# See ownership sheet

Railroad, Wagon, Idle, Abandoned Strip

LOCAL MINE

IDENTIFICATION L-40

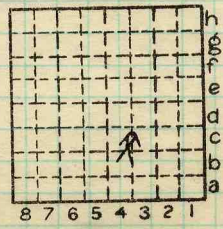
County No. 399

Coal No. 6

Quad. 247

Part

County St. Clair



Sec. 19

T.	1	N.
R.	8	S.
		E.
		W.

Index No.

COAL MINE OPERATOR

1219.C4

L



### LOCATION AND ELEVATION

Location: side R. R.  
 side R. R.  
 side Highway No.

on top. map Location sheet

Elevation: Method, 1. Est. ( ) \_\_\_\_\_ ft.  
 2. Inst. (kind PT) 520.6 ft.

By EFT 13-87-12 Data sheet

#### DEPTH

Authority To coal \_\_\_\_\_ ft.  
 Authority Rail to rail \_\_\_\_\_ ft.  
 Top of coal above rail. (Est. Rule) \_\_\_\_\_ ft.  
 To coal \_\_\_\_\_ ft.

#### ALTITUDE OF TOP OF COAL

By estimated data \_\_\_\_\_  
 By instrumental data \_\_\_\_\_ 520.6 ft.

#### Thickness

Max. in. Min. in. Aver. 78 in.

#### GEOLOGICAL DATA

Mine notes, date \_\_\_\_\_

Coop No. Pyr. inv. Coal Ash inv.

#### CHEMICAL DATA

Analyses Face	U. I.	B. M.	Others
Car	U. I.	B. M.	Others
Org. Sulf	U. I.	B. M.	Others
Ash fusion	U. I.	B. M.	Others
Ash anal.	U. I.	B. M.	Others
	U. I.	B. M.	Others

#### Classification

Misc. tests: Coking. Cleaning Boiler

Published descriptions:—

Railroad, Wagon, Idle, Abandoned

### LOCAL MINE IDENTIFICATION

County No. 399

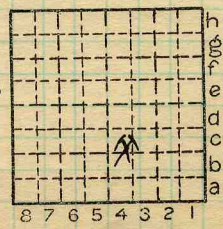
Coal No. 6

Quad. 247

Part

County

St. Clair



Sec. 19

T. 1 S. ~~1~~  
 R. 8 W. ~~1~~  
 Index No.

### COAL MINE LOCATION AND DATA

1219.C9

L