

George Berry Coal mine - local
shaft mine.

Coal - 30" at 20' depth.

Total depth of mine - 28'

Bottom of underlay is at 28'

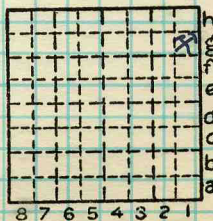
Co. No. 71

SHEET BY DHR 6/9/59

By ETB & CET Date ?
FIELD NOTEBOOK

Quad. 170 Part NW 1/4

County SCOTT



Sec. 30-16

T. 15 N.

R. 12 W.

Index No.

✓