



Form 180

R - F

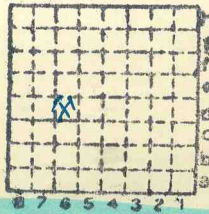
HERRIN

Dill CC

L 24.

383

Mine Index 3569



Sec. 30

T. 1 N. S.

R. 7 E. W.

Index No.



Mine originally operated by: (1)

Date

L-24

1932

Original name or number:

Illinois Coal Report 1933

p. 190 \*26

LATER OPERATORS

Date

Operator

Name or No.

2 1938

Hill Coal Co

8

4

5

6

7

8

9

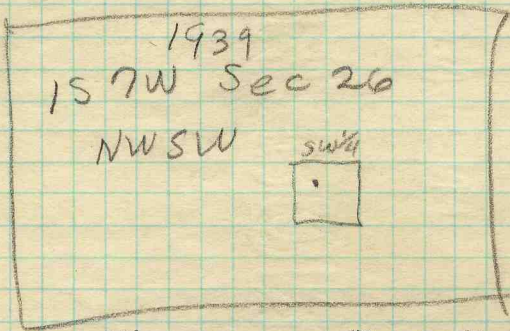
10

11

12

13

14



\* Also owners

#See ownership sheet

Railroad, Wagon, Idle, Abandoned

Slope Mine

LOCAL MINE

IDENTIFICATION L-24

County No. 383

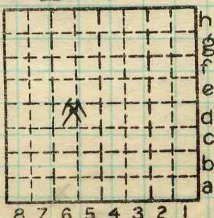
Coal No. 6



Part 6

Quad. New Athens

County ST CLAIR



Sec. 30

T. 1 S.

R. 7 W.

Index No.

1130.D6

COAL MINE OPERATOR





( Sheets) COAL PRODUCTION (Sheet )

Period						Tons	
Mo.	Day	Year	Mo.	Day	Year		
1	1	1933	12	31	1933	2	425
		1934			1934	11	688
		1935			1935	10	433

SUMMARIES

No. to No.

Railroad, Wagon, Idle, Abandoned

IDENTIFICATION

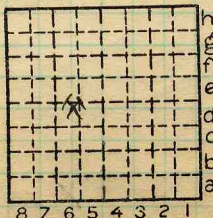
L-24

LOCAL MINE

County No. 383 Coal No. 6

Quad. New Athens Part 4

County St Clair



Sec. 30

T. 1 S.

R. 7 W.

Index No.

1130 D6





LOCATION AND ELEVATION

Location: side R. R.  
side R. R.

3/4 m. W side Highway No. 13

on top. map Location sheet

Elevation: Method, 1. Est. ( G.H.C ) \_\_\_\_\_ ft.  
2. Inst. (kind PT ) 497.5 ft.

By EFT 13-87-41C Data sheet

DEPTH

Authority To coal 60 ft.  
Authority Rail to rail \_\_\_\_\_ ft.  
Top of coal above rail. (Est. Rule) \_\_\_\_\_ ft.  
To coal 63 ft.

ALTITUDE OF TOP OF COAL

By estimated data \_\_\_\_\_ ft.  
By instrumental data \_\_\_\_\_ ft.

Thickness

Max. in. Min. in. Aver. 84 in.

GEOLOGICAL DATA

Mine notes, date \_\_\_\_\_  
\_\_\_\_\_

Coop No. Pyr. inv. Coal Ash inv.

CHEMICAL DATA

Analyses Face U. I. B. M. Others  
Car U. I. B. M. Others  
Org. Sulf U. I. B. M. Others  
Ash fusion U. I. B. M. Others  
Ash anal. U. I. B. M. Others  
U. I. B. M. Others

Classification

Misc. tests: Coking. Cleaning Boiler

Published descriptions:—

Railroad, Wagon, Idle, Abandoned

LOCAL MINE IDENTIFICATION

County No. 383

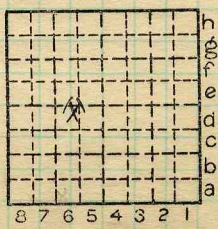
Coal No. 6



Part 4

Quad. New Athens

County St. Clair



Sec. 30

T. 1 E. S.

R. 7 W.

Index No.

COAL MINE LOCATION AND DATA