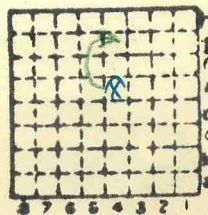


ISGS Index No. 4070.

"comb. strip + slope" - Hughes NB 614

F. Bones ("before 1926")  
# 4070

497



B4  
Sec. 24  
T. 9 S.  
R. 3 E.  
Index No.

✓



Mine originally operated by: (1)

Date

*F. Bones*

Original name or number:

Illinois Coal Report

p.

LATER OPERATORS

Date	Operator	Name or No.
2		
3		
4		
5		
6		
7		
8		
9		
10		
11		
12		
13		
14		

\* Also owners

#See ownership sheet

Railroad, Wagon, Idle, Abandoned **Strip**

IDENTIFICATION

County No. *497*

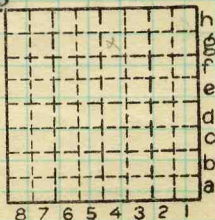
Coal No. *6*



Part

Quad. *Marion*

County *Williamson*



Sec. *24*

T. *9* N. S.

R. *3* E. W.

Index No.

*0724 g4*

COAL MINE OPERATOR



LOCATION AND ELEVATION

Location: side R. R. side R. R. side Highway No.

on top. map Location sheet

Elevation: Method, 1. Est. ( ) ft. 2. Inst. (kind Hand Level) 468 ft.

By Data sheet

DEPTH

Authority To coal ft.

Authority Rail to rail ft.

Top of coal above rail. (Est. Rule) ft.

To coal ft.

ALTITUDE OF TOP OF COAL

By estimated data

By instrumental data ft.

Thickness

Max. in. Min. in. Aver. 60 in.

GEOLOGICAL DATA

Mine notes, date

Coop No. Pyr. inv. Coal Ash inv.

CHEMICAL DATA

Table with 4 columns: Analyses Face, U. I., B. M., Others. Rows include Car, Org. Sulf, Ash fusion, Ash anal.

Classification

Misc. tests: Coking. Cleaning Boiler

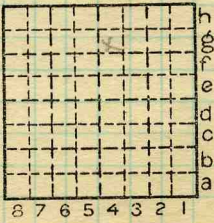
Published descriptions:—

Railroad, Wagon, Idle, Abandoned Strip

IDENTIFICATION

County No. 497 Quad. Marion County Williamson

Coal No. 6 Part



Sec. 24 T. 9 N. R. 3 E. W. Index No. 0724 84

COAL MINE LOCATION AND DATA