



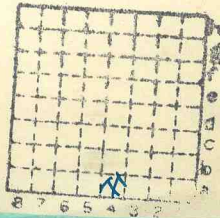
Form 180

Bohl. Mine

R. -F

HERRIN

368.



Sec. 7

T. 2 N. 5

R. 8 E. W.

Index No.



LOCATION AND ELEVATION

Location: side R. R.  
side R. R.

E side Highway No. 157

on top. map Location sheet 13-87. 44a

Elevation: Method, 1. Est. ( ) ft.

2. Inst. (kind Plane table) 477.5 ft.

By W. B. Roe 11-4-30 Data sheet

DEPTH

Authority To coal ft.

Authority Rail to rail ft.

Top of coal above rail. (Est. Rule) ft.

To coal ft.

ALTITUDE OF TOP OF COAL

By estimated data

By instrumental data ft.

Thickness

Max. in. Min. in. Aver. in.

GEOLOGICAL DATA

Mine notes, date

Coop No. Pyr. inv. Coal Ash inv.

CHEMICAL DATA

Analyses Face	U. I.	B. M.	Others
Car	U. I.	B. M.	Others
Org. Sulf	U. I.	B. M.	Others
Ash fusion	U. I.	B. M.	Others
Ash anal.	U. I.	B. M.	Others
	U. I.	B. M.	Others

Classification

Misc. tests: Coking. Cleaning Boiler

Published descriptions:—

Railroad, Wagon, Idle, Abandoned

IDENTIFICATION

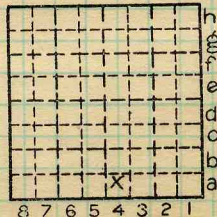
County No. 368

Coal No. 6

Part 7

Quad. Monk's Mound

County STCLAIR



Sec. 7

T. 2 N.

R. 8 W.

Index No.

0307 4a

COAL MINE LOCATION AND DATA

L. abel?