



### Form 180 Blue

GrapeCreek No. 2

h	.	.	.	.	.	.	.	.	.
g	.	.	.	.	.	.	.	.	.
f	.	.	.	.	.	.	.	.	.
e	.	.	.	.	.	.	.	.	.
d	.	.	.	.	.	.	.	.	.
c	.	.	.	.	.	.	.	.	.
b	.	.	.	.	.	.	.	.	.
a	.	.	.	.	.	.	.	.	.
	8	7	6	5	4	3	2	1	

Sec. 34 C8

T. 19	N.
R. 11	E.

Index No.

mine index 3755



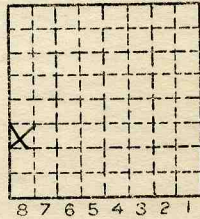
Location and Elevation Data

Location: Exact Approximate
(Approximate only if no trace of record of original exists)
Location by ABD MINES BOOK
Date..... Notebook No..... Page.....
Looseleaf ref.....
Map files No.....

Description of Location

Position in sec., 1/4 sec., 40 acres

.....feet from North line
.....feet from East line
.....feet from South line
.....feet from West line



Other description:.....

opened 1984
Closed 1886

Farm.....

No.....

Company Grape Creek

No. 2

County No. 602

Elevation..... ft.

By.....

Method: Level, transit, alidade, hand level

Elevation of.....

Height of point above ground.....

Date..... Notebook..... P.....

Looseleaf ref.....

Map files No.....

Description of item: (drill hole, mine, etc.) drift NOT USED

6' 8" of # 6

County VERMILION Quadrangle 149 Index No. 1734C8



Mine originally operated by: (1)

*Grape Creek #2*

Date

*1884*

Original name or number:

Illinois Coal Report

p.

LATER OPERATORS

Date	Operator	Name or No.
2		
3		
4		
5		
6		
7		
8		
9		
10		
11		
12		
13		
14		

\* Also owners

#See ownership sheet

Railroad, Wagon, Idle, Abandoned

**LOCAL MINE**

IDENTIFICATION

County No.

Coal No.

Quad.

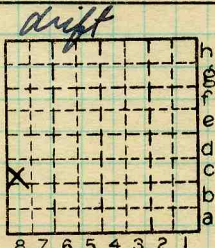
*149*

Part

*6*

County

*VERMILION.*



Sec. *34*

T. *19* N. S.

R. *11* E. W.

Index No.

*1734.08*

COAL MINE OPERATOR

COUNTY NO. *602*



( Sheets ) COAL PRODUCTION ( Sheet )

Period						Tons							
Mo.	Day	Year	Mo.	Day	Year								
					1884								
					1885								
					1886								
					1887							1420	

SUMMARIES

No.	to	No.				

Railroad, Wagon, Strip, Idle, Abandoned

*Shipping drift* Sec. 34

IDENTIFICATION

County No. \_\_\_\_\_

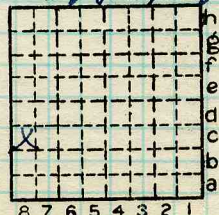
Coal No. \_\_\_\_\_

Coal Report No. \_\_\_\_\_

6

Quad. 149

County *Vermilion*



T. 19 N.   
 R. 11 W.   
 Index No.

COAL MINE—PRODUCTION

ILLINOIS GEOLOGICAL SURVEY, URBANA

1734 C8

