





Mine originally operated by: (1)

Date Citizens Coal Mining Co.

1893

Original name or number: A

Illinois Coal Report 1893 p.

LATER OPERATORS

Date Operator Name or No.

2	1924	Central Illinois Coal Mining Co.	A
3	1941	"The Mine B' Coal Co."	A

4  
5  
6  
7  
8  
9  
10  
11  
12  
13  
14

1946 - Abd

\* Also owners

#See ownership sheet

Railroad, Wagon, Idle, Abandoned Shaft 202'

C.S. & St. L.

IDENTIFICATION

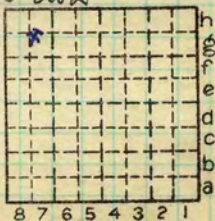
County No. ~~65~~

Coal No. 5

Quad. Springfield

Part 9

County Sangamon



Sec. 32

T. 16 N.

R. 5 W.

Index No.

0932 88

COAL MINE OPERATOR





( Sheets) COAL PRODUCTION (Sheet )

No.	Period						Tons	
	Mo.	Day	Year	Mo.	Day	Year		
1	1	1	1936	12	31	1936	296	333
1	1	1	1937	12	31	1937	205	415
S-1	1	1	1938	12	31	1937	152	360
						1939	187	564
						1940	179	951
S-1	1	1	1941	12	13	1941	201	728
S-1			1942					
						1943	291	343
						1944	—	—
						1945	—	—

#1

Abd

SUMMARIES

No.	to	No.			
1893		1935	5	463	050

Railroad, Wagon, Idle, Abandoned

IDENTIFICATION

S-1  
 County No. ~~65~~ Coal No. 5  
 Springfield  
 Quad. Part 9  
 County Sangamon



Sec. 32

T. 16 N.  
 R. 5 W.

Index No.  
 0932 82



LOCATION AND ELEVATION

Location: side R. R.
side R. R.
side Highway No.

on top. map Location sheet Map Files #12-83-13D

Elevation: Method, 1. Est. ( ) ft.
2. Inst. (kind Plane Table ) 596.3 ft.

By W.B.Roe NB 602 p.3-12 Data sheet

DEPTH

Authority To coal 200 ft.
Authority Folio 188 Rail to rail 212 ft.
Top of coal above rail. (Est. Rule) ft.
To coal ft.

ALTITUDE OF TOP OF COAL

By estimated data ft.
By instrumental data ft.

Thickness

Max. in. Min. in. Aver. 68 in.

GEOLOGICAL DATA

Mine notes, date 1934

Coop No. Pyr. inv. Coal Ash inv.
Ruer #17 (1894-)

CHEMICAL DATA

Analyses Face U. I. B. M. Others 3
Car U. I. B. M. Others
Org. Sulf U. I. B. M. Others
Ash fusion U. I. B. M. Others
Ash anal. U. I. B. M. Others
#616 U. I. B. M. Others

Classification R.I. 121 U.C.I. 145

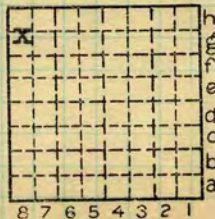
Misc. tests: Coking. Cleaning Boiler

Published descriptions:—

Railroad, Wagon, Idle, Abandoned

IDENTIFICATION

County No. 85 Coal No. 5
Quad. Springfield Part 9
County Sangamon



Sec. 32
T. 16 N.
R. 5 W.
Index No. 0932 g8

COAL MINE LOCATION AND DATA



Location and Elevation Data

Location: Exact ~~Approximate~~  
 (Approximate only if no trace or record of original exists)  
 Location by W. B. Roe  
 Date 4-22-31 Notebook No. 602 Page 3-12  
 Looseleaf ref. \_\_\_\_\_  
 Map files No. 12-83-13d

Description of location

1000 ✓  
1200 feet from North line  
 \_\_\_\_\_ feet from East line  
 \_\_\_\_\_ feet from South line  
500 ✓  
575 feet from West line



Sec. 32  
 T. 16 N.  
 R. 5 W.

Other description: \_\_\_\_\_  
 Farm \_\_\_\_\_  
 No. \_\_\_\_\_  
 Company Central Ill. C. & M. Co.  
 No. "A"  
 County No. 68

Formerly -  
Citizens "A" Mine  
Working

Elevation 596.3 ft.

By W. B. Roe

Method: Level, transit, alidade, hand level

Elevation of Alidade  
Rail at shaft.

Height of point above ground 0

Date 4-22-31 Notebook 602 P. 3-12

Looseleaf ref. \_\_\_\_\_

Map files No. 12-83-13d

Description of item: (drill hole, mine, etc.) Mine shaft.

Folio gives 212' Rail to rail; Roe reports 225' - R-R.

County Jackson Quadrangle Springfield Index No. 0932  
 (45576) (AI-10-30)

Town, Springfield

Local Authority,

Level: Auth., Bull 20

Method,

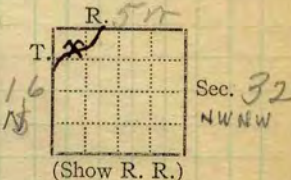
R. R.,

Location: authority,

Surface alt., 5902 ft.  
Depth to coal, 207 ft.  
Alt. top coal, 0 ft.  
Thickness: Av. 64 in.  
Max. in., Min. in.

W. + 9C  
W. I. S. ; G. A. C. P. S. 45  
C. M. W.

See folio 188



Operator *Auer #17* Mine Name or No.

19 Citizens Coal Mining Co. A

Successor to  
Date

✓ Succeeded by *Central Ill. Coal Mining Co. Central Ill.*  
Date *1923. Coal Age. July 26, 1923.* "A"  
Succeeded by *Box 396, Springfield.*  
Date

PRODUCTION.

							U. S. No.
1917	66	458					
			<i>500 av. daily</i>				
<i>26</i>	<i>12</i>	<i>00</i>	<i>Tons daily cap.</i>				
<i>27</i>	<i>164</i>	<i>665</i>					
<i>28</i>							
<i>1931</i>	<i>228</i>	<i>788</i>				<i>1930 #14</i>	
<i>1932</i>	<i>170</i>	<i>894</i>					

Geol. Notes? *Yes* Coop. No. Coal secs.? *360, 1*

Analyses No. *1773, 1774*

*1614*

Examined by Ref.

Coal bed name: Local Survey No.

County Sangamon

Index No. *0932.09*

K.—ACTIVE SHIPPING OR LOCAL COAL MINE.

*0932*





COAL MINE NOTES.

0832

COUNTY *Sangamon*

TOWN

MAP No. *14782*

T. *16 N*

R. *5 W.*

S. *32 NW 1/4*

OPERATOR *Citizens Coal Mining*

OFFICE *Springfield.*

MINE *A*

TIPPLE

ENGINES

BOILERS

DRUM

SHAFT

CAGE

HAULAGE

CARS

VENTILATION

DRAINAGE

SPRINKLING

WORKING SYSTEM *Room + Pillar.*

MINING METHODS *shot from solid*

SIZE OF ENTRIES—MAIN CROSS ROOM NECK

SIZE OF PILLARS—MAIN CROSS ROOM

SHAFT CHAIN BARRIER

AMOUNT OF TIMBERING SIZE

PROPORTION OF COAL UTILIZED

AMOUNT AND CHARACTER OF WASTE

ACREAGE OF COAL MINED

ACREAGE OF COAL REMAINING

PROPORTION OF MINE RUN AND SCREENED COAL

METHOD OF SIZING RESCREENED

SIZES

PER CENT

PROPORTION AND SIZE OF WASHED COAL

DAILY OUTPUT *about 750 tons.*

UTILIZATION

MARKETS

FREIGHT RATES

SELLING PRICES AT MINE

COAL LAND OWNED LEASED HELD IN FEE

COST OF LAND OWNED LEASED HELD IN FEE

ADDITIONAL NOTES

*14782*

0932



COAL MINE NOTES.  
CONTINUED.

OPERATOR *Citizens Coal Co.*  
ENTRANCE *shaft.*

MINE "A" 0832

ELEVATION *587* NAME OF COAL BED  
THICKNESS OF COAL

DEPTH TO FLOOR *212* MAX. MIN. AV.

ALTITUDE OF COAL *375*

LOCATION OF SECTION

No.	SECTION.	In.
1	<i>Coal 64"</i>	
2		
3		
4		
5		
6		
7		
8		
9		
10		
11		
12		
Tape		Total

SAMPLE No.

*12 1/16 174"*

CAN No.

*2'-6"*

CONDITION

GROSS WEIGHT

*64"*

TIME EXPOSED

NOT SHIPPED

*20'*

NOT INCLUDED

SECTION



PHYSICAL PROPERTIES BY NUMBERS

*No Blue Band, concretions numerous.  
Pyrite band with shells between concretions  
and coal. local.*

ROOF *Ls. 12"-14"; Black slate 1 1/2' to 5' average 3 1/2'*  
*Soapstone 15". Black slate roof stands well.*  
FLOOR *Fire Clay 20'*

DIP

FAULTS, ETC. *Have backs common  
cleat main East West.*

GAS

COLLECTOR *Savage*

REFERENCE *U.B. 12 P. 84.*

DATE *1/24/32*

0932



Mine A Springfield

February 22, 1934

Sample No. 1  
 Can No. 51 (1048)  
 Face of Room 12 off 19th N off main West  
 940' from W line, 2560' from S line, sec 25, T16N, R6W  
Duplicate sample cut here alongside of first cut, and  
ground in mine - Can No. 1011  
 Height of section cut (by rule) = 69"  
 Height of section cut (by tape)  
 Roof: black, shale, non-fissile, hard with very many  
 concretions here - stands up well and makes good  
 roof  
 Floor: fireclay, gray, hard, slickensided  
 Sulphur here confined to stringers through coal, no  
 nodules or lenses noticed in room  
 Set of band samples collected here. Bands here better  
 than any of other places sampled, but even at  
 that they are very poor; fusain almost entirely  
 confined to thin bands and most of these are  
 pyritized; vitrain in fair sized bands but they  
 proved very difficult to separate and pick out  
Fusain sample (moisture sample included) Can No. 1020  
Charain sample Can No. 1027  
Vitrain sample (moisture sample included) Can No. 1028

Sample No. 2  
 Can No. 52 (1049)  
 Face of both W of 16th S off main West  
 450' from E line, 235' from S line, sec 26, T16N, R6W  
 Height of section cut (by rule) = 70"  
 Height of section cut (by tape) =  
 Roof: black shale with many concretions; good roof  
 Floor: fireclay, hard, gray, firm, does not heave  
 Pyrite at this place probably greater in amount  
 than in 19th N although no nodules or lenses  
 were noted - confined to stringers and facings

Operator, Central Illinois Coal Mining Co. Date February 22, 193  
 Mine, A Sec. 32 T. 16 N. R. 5W  
 Location in mine, Face of Room 12 off 19th N off Main West  
 940' from W line, 2560' from S line, sec 25, T 16 N, R 6 W

GRAPHIC SECTION		DESCRIPTION OF SECTION (AT POINT SAMPLED)		
In.	No.	No.	(Note character and thickness of roof)	Inches
			Roof: dark, black shale, non-fissile, many concretions	36"
		1	Coal	1 1/3
		2	Vitrain	1/16
		3	Coal	1
		4	Durain	7/3
		5	Vitrain	3/16
		6	Coal	9/16
		7	Pyritic fusain	3/8
		8	Clarain	9/3
		9	Durain	1/3
		10	Coal	3/4
		11	Vitrain	1/4
		12	Clarain	25/3
		13	Vitrain	7/3
		14	Clarain	5/3
		15	Vitrain	5/3
		16	Coal	19/3
		17	Vitrain	7/3
		18	Durain	7/3
		19	Vitrain	7/3
			Over (Note character and thickness of floor)	
			Total thickness of coal.	69 1/8

Band samples

Fusain	1026
Clarain	1027
Vitrain	1028

Condition, Moist Time, 2 hr. 30 min.  
 Wt. Gross, 40 lbs. Net, lbs.  
 What Nos. shipped by Co.? 1-6, 8-21, 23-32, 34-38  
 41, 43-47, 49, 51, 53, 55, 57-59, 61, 63-76, 78-80  
 Excluded from sample: No. 7, 22, 33, 39, 40, 42, 48, 50, 52, 54  
 Sample represents 67 in. tons.  
 Impurities? How do they occur? Pyrite bands and stringers and in mineralized fusain; calcite facings

(1 division=3 in.) Sample No. 1 Can No. 52(1048) 1011 - Ground in mine Lab. No.

Collector, E.T. Benson & R.A. McClevey Coal: Survey No. 5  
 Mine, A Co. Sangamon Index No. 093218e



20	Fusain		51	Coal	$\frac{3}{4}$
21	Coal	2	52	Pyrite	$\frac{7}{32}$
22	Pyritic fusain		53	Coal	$\frac{15}{32}$
23	Vitrain		54	Pyritic fusain	$\frac{13}{32}$
24	Durain		55	Coal	$\frac{1}{8}$
25	Vitrain		56	Pyritic fusain	3
26	Clarain		57	Coal	$\frac{1}{8}$
27	Vitrain		58	Vitrain	2
28	Clarain		59	Coal	$\frac{1}{2}$
29	Vitrain		60	Pyrite	$\frac{3}{32}$
30	Coal	1	61	Coal	$\frac{13}{16}$
31	Fusain		62	Pyrite	$\frac{3}{32}$
32	Coal	3	63	Vitrain	$\frac{7}{8}$
33	Pyrite		64	Coal	$\frac{1}{32}$
34	Vitrain		65	Vitrain	$\frac{9}{32}$
35	Coal	2	66	Coal	1
36	Vitrain		67	Vitvain	$\frac{1}{16}$
37	Clarain		68	Coal	4
38	Vitrain		69	Vitrain	$\frac{2}{3}$
39	Pyritic fusain		70	Clarain	$\frac{9}{32}$
40	Pyrite		71	Vitrain	2
41	Coal	3	72	Coal	$\frac{9}{32}$
42	Pyrite		73	Vitrain	$\frac{3}{16}$
43	Coal		74	Coal	1
44	Durain		75	Vitrain	$\frac{13}{16}$
45	Coal		76	Coal	$\frac{1}{4}$
46	Vitrain		77	Pyritic fusain	5
47	Coal	1	78	Coal	$\frac{1}{16}$
48	Pyritic fusain		79	Vitrain	2
49	Coal	1	80	Coal	$\frac{1}{4}$
50	Pyrite				3
					$\frac{11}{8}$
				Total	$69\frac{1}{8}$

Floor: fireclay, gray, hard, slickensided

Operator, Central Illinois Coal Mining Co. Date February 22, 1932  
 Mine, **A** Sec. 32 T. 16N R. 2W  
 Location in mine, Face of 6th W off 16th S off Main West  
 450' from E line, 235' from S line, sec 26, T16N, R6W

GRAPHIC SECTION		DESCRIPTION OF SECTION (AT POINT SAMPLED)	
In.	No.	No. (Note character and thickness of roof)	Inches
		Roof: Black shale with many concretions	36"
		1 Coal	19/32
		2 Durain	9/16
		3 Vitrain	1/4
		4 Coal	3 11/32
		5 Vitrain	1/8
		6 Clarain	1/8
		7 Pyrite	1/32
		8 Pyritic fusain	1/8
		9 coal	1 5/8
		10 Vitrain	1 5/16
		11 Clarain	1/4
		12 Vitrain	3/16
		13 Clarain	1 7/32
		14 Vitrain	7/32
		15 Clarain	15/16
		16 Vitrain	3/16
		17 Clarain	11/16
		18 Vitrain	3/16
		19 Clarain	11/16
		Over (Note character and thickness of floor)	
		Total thickness of coal.	69 1/2"

Condition, **Dry** Time, ~~45~~ hr. **40** min.

Wt. Gross, **40** lbs. Net, lbs.

What Nos. shipped by Co.? 1-6, 9-23, 25, 27, 29-31, 33-37, 40-42

44-48, 50, 52, 54, 56, 58-64, 66, 68-70, 72, 74-86, 88-92, 94-96, 98, 100, 102, 104-108, 110-112

Excluded from sample: No. 7, 8, 24, 26, 28, 32, 38, 39, 43, 47, 51, 53,

Sample represents **67 3/16** in. tons. 109

Impurities? How do they occur? Pyrite bands, stringers

(1 division=3 in.) and facings and in fusain; calcite facings

Sample No. **2** Can No. **521049** Lab. No.

Collector, **E.T. Benson & R.A. McClevey** Coal: Survey No. **5**

Mine, **A** Co. **Sangamon** Index No. **0932.63**

R.—COAL SAMPLE SHEET. (12759—1000—2-29) 7



21	Clarain	1	$\frac{29}{32}$	66	Coal		$\frac{13}{32}$
22	Fusain		$\frac{1}{8}$	67	Pyrite		$\frac{3}{16}$
23	Clarain		$\frac{11}{32}$	68	Coal		$\frac{9}{16}$
24	Pyritic fusain		$\frac{1}{16}$	69	Vitrain		$\frac{1}{32}$
25	Clarain		$\frac{7}{16}$	70	Coal		$\frac{15}{32}$
26	Pyritic fusain		$\frac{3}{32}$	71	Pyrite		$\frac{1}{16}$
27	Clarain		$\frac{13}{32}$	72	Coal		$\frac{13}{32}$
28	Pyritic fusain		$\frac{1}{8}$	73	Pyritic fusain		$\frac{3}{16}$
29	Clarain	1	$\frac{3}{8}$	74	Coal		$\frac{3}{16}$
30	Vitrain		$\frac{5}{16}$	75	Vitrain		$\frac{7}{32}$
31	Clarain	1	$\frac{3}{16}$	76	Clarain		$\frac{15}{32}$
32	Pyritic fusain		$\frac{7}{32}$	77	Vitrain		$\frac{7}{32}$
33	Coal	5	$\frac{3}{32}$	78	Clarain		$\frac{13}{32}$
34	Vitrain		$\frac{1}{8}$	79	Vitrain		$\frac{1}{8}$
35	Clarain	1	$\frac{1}{16}$	80	Clarain		$\frac{5}{8}$
36	Vitrain		$\frac{7}{16}$	81	Vitrain		$\frac{3}{16}$
37	Clarain		$\frac{1}{16}$	82	Clarain		$\frac{1}{2}$
38	Pyrite		$\frac{1}{32}$	83	Vitrain		$\frac{5}{32}$
39	Pyritic fusain		$\frac{5}{32}$	84	Clarain		$\frac{23}{32}$
40	Clarain	1	$\frac{1}{32}$	85	Vitrain		$\frac{3}{16}$
41	Vitrain		$\frac{3}{16}$	86	Coal	1	$\frac{17}{32}$
42	Coal	1	$\frac{5}{8}$	87	Pyritic fusain		$\frac{1}{8}$
43	Pyritic fusain		$\frac{1}{32}$	88	Coal	1	$\frac{1}{8}$
44	Coal		$\frac{15}{16}$	89	Vitrain	2	$\frac{3}{32}$
45	Vitrain		$\frac{3}{16}$	90	Coal		$\frac{1}{32}$
46	Fusain		$\frac{1}{32}$	91	Vitrain		$\frac{1}{32}$
47	Vitrain		$\frac{3}{16}$	92	Coal		$\frac{5}{32}$
48	Clarain		$\frac{15}{32}$	93	Pyrite		$\frac{1}{3}$
49	Pyritic fusain		$\frac{3}{16}$	94	Coal		$\frac{7}{16}$
50	Coal		$\frac{7}{8}$	95	Pyrite		$\frac{1}{32}$
51	Pyrite		$\frac{1}{32}$	96	Coal		$\frac{11}{32}$
52	Coal		$\frac{9}{32}$	97	Pyrite		$\frac{1}{32}$
53	Pyrite		$\frac{1}{32}$	98	Coal		$\frac{7}{16}$
54	Coal		$\frac{11}{32}$	99	Pyrite		$\frac{1}{32}$
55	Pyrite		$\frac{1}{16}$	100	Coal		$\frac{1}{16}$
56	Coal	1	$\frac{3}{32}$	101	Pyrite		$\frac{1}{32}$
57	Pyrite		$\frac{5}{32}$	102	Coal	1	$\frac{29}{32}$
58	Coal		$\frac{3}{4}$	103	Pyritic fusain		$\frac{1}{4}$
59	Vitrain		$\frac{7}{32}$	104	Coal	4	$\frac{17}{32}$
60	Clarain		$\frac{5}{16}$	105	Vitrain		$\frac{7}{32}$
61	Vitrain		$\frac{3}{16}$	106	Coal	2	$\frac{3}{32}$
62	Coal	1	$\frac{11}{16}$	107	Vitrain		$\frac{15}{32}$
63	Vitrain		$\frac{5}{32}$	108	Coal	4	$\frac{5}{32}$
64	Coal	1	$\frac{29}{32}$	109	Pyritic fusain		$\frac{1}{32}$
				110	Coal		$\frac{11}{32}$
				111	Vitrain		$\frac{13}{32}$
				112	Coal		$\frac{1}{16}$

Total  
69 1/2

Illinois State Geological Survey

From Illinois State Journal

10/1/38 - Mine A reopened today, has been closed for 6 months

9/5/41 - Wm. Ryan, president of Central Illinois Coal Co. announced that Carl H. Elshoff Assets has bought Mine A. All properties to be taken over by Mine B Coal Co, president Carl Elshoff

~~9/9/45 - Carl Elshoff, leased from Citizens~~

from the Sangamon Valley Collection of the Lincoln Library, Springfield IL

By CAC Date 9/93

Quadrangle \_\_\_\_\_

County Sangamon Sec. \_\_\_\_\_ T \_\_\_\_\_ R \_\_\_\_\_

mi 616

