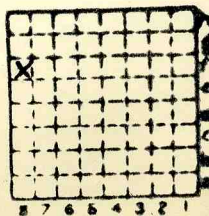




Form 180

R F

SPRINGFIELD



Sec. 12

T. 16 N. 9

R. 1 E. W.

Index No.

Niantic Carbon Coal Co.

Mi. # 41

Mine Index



Town, **Niantic**

Local Authority,

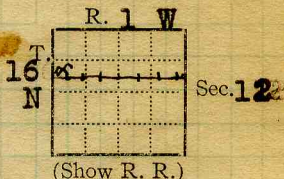
Level: Auth.,

Method,

R. R., **Wabash**

Location: authority, **Letter N. Carb. Co. Co.**  
**Feb. 1/18**

Surface alt., **603** ft.  
Depth to coal, <sup>bot</sup> **365** ft.  
Alt. top coal, **235±** ft.  
Thickness: Av. **66** in.  
Max. in., Min. in.



(Show R. R.)

Operator

Mine Name or No.

19 ~~Decatur Coal Co~~ **Niantic**

Successor to

Date

Succeeded by

Date

Succeeded by

Date

*Wise Niantic Carbon Fuel Co*  
*Niantic*  
*paid see map in files - 23-31*  
**Niantic Carbon Coal Co.** **Niantic**  
**Feb. 1/18**  
*Burned June 10, 19 - see Springfield*  
*register June 10, 19 but expect to open*  
**PRODUCTION.**

<b>Illinois</b>							U. S. No.
1917		<b>4962</b>					
<i>Declared Bankrupt</i>							
<i>Taferville Bridge Dec. 31, 24</i>							
<i>1926 sale for 2 yrs</i>							
<i>Maplet</i>							
<i>lot 25 product</i>							
<i>included 24</i>							

Geol. Notes? **Yes**

Coop. No. **41**

Coal secs.? **Yes**

Analyses No. **5244-45-46, 1874, 347**

Examined by

Ref.

Coal bed name: Local **SHIPPING MINE**

Survey No.

County **Macon**

Index No. **12W12.05**

**K.—ACTIVE SHIPPING OR LOCAL COAL MINE.**

Feb 28 1918. 19

TO THE STATE GEOLOGICAL SURVEY:  
URBANA, ILLINOIS.

Mr. \_\_\_\_\_ owner, is

building a rig on \_\_\_\_\_ Farm \_\_\_\_\_ Acres,

Niantic Twp., Macon Co.

Located as follows in Section No. 12  
Please indicate railroad

— North —

\_\_\_\_\_ feet from North line

\_\_\_\_\_ feet from East line

\_\_\_\_\_ feet from South line

\_\_\_\_\_ feet from West line

Remarks \_\_\_\_\_

Mine name or No. \_\_\_\_\_

Niantic Carbon Coal Co

Signed \_\_\_\_\_

Wan Mackner


\* W A B \*

West

East

Letter to \_\_\_\_\_

Date \_\_\_\_\_

\_\_\_\_\_ sample sacks

to \_\_\_\_\_

Date \_\_\_\_\_

Samples rec'd \_\_\_\_\_

Date \_\_\_\_\_

Log rec'd \_\_\_\_\_

Date \_\_\_\_\_

Remarks \_\_\_\_\_

County Macon  
Farm \_\_\_\_\_ Well No. \_\_\_\_\_  
Operator \_\_\_\_\_



John C. Moore Corporation, Rochester, N. Y. Binder and holes in leaves, each Patented 1906.

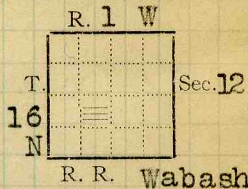


COAL MINING INVESTIGATIONS  
COOPERATIVE AGREEMENT

Mine Name or No., **Niantic**  
mile from **At Niantic**

Operator, 191 **Decatur Coal Co.**

Operator, 191



Entrance, **Shaft** Elev., ft. ~~XXXX~~ **Same as Niantic**  
Depth to bottom coal, **365** ft. Alt.

SURFACE DATA.

- A. Topography **Level** See
- B. Surficial materials, (1) Character
- (2) Thickness, (3) Effect on mining and shaft-sinking, of former drainage lines, underground water strata, etc.

**No trouble**

- C. Outcrops, (1) Character, See
- (2) Structure, See
- (3) Fossil horizons, See
- Collection No.,
- (4) Evidences of subsidence, See
- D. Note collection of mine maps, drill records and shaft logs.

See drill record sheet.

- E. Notes on surrounding area,

See

Coal bed name: Local, No. **5.**

Collector, **F. H. Kay**

Mine, **Niantic**

L.—SURFACE SHEET (Geol.)

Survey

State No. **W1212**

Co. **Macon** Co-op. No. **41**



UNDERGROUND DATA

F. Thickness of rock above bed worked,

(1) Important variations,

See

G. Note presence of strata having important effect on mining.

See

(1) Position,

(2) Character,

(3) Persistence,

(4) Other workable coal beds,

See

H. Cap rock,

2

(1) Thickness, **4"-12"**

(2) Height above coal, **3'-5'**

See

I. Immediate roof **Slate**

(1) Thickness, **3"-5"** (2) Contact with coal,

(3) Horizontal variation, **3 kinds**

**Black, blue-gray** See X

J. Draw slate. (1) Thickness, (2) Contacts

**No regular**

(3) Persistence

K. Coal bed: Max. **6'** Min. **5'** Av. **5' 6"** inches

(1) Benches,

(a) Position,

(b) Persistence,

See

(2) Bedded impurities, kind, position in benches, persistence, ease of separation.

**Mostly small sulphur streaks in upper part of bed. None continuous.**

See

(3) Irregularities in continuity of bed (due to deposition, erosion, or movement).

**Clay veins** See X

(a) Effect on mining,

See X

**Cost increased**

SECTION				
Ft.	In.	Name	Index	Sym.

Collector, **F. H. Kay** Coal, No. **5**

State No. **W1212**

Mine, **Niantic** Co. **Macon**

Co-op. No. **41**



## UNDERGROUND DATA (cont'd.)

- K. (5) Physical character of coal in benches,
- (a) Relative hardness, **Bottom hardest in places but not regularly so.**
  - (b) Lustre, **Large per cent bright coal.**
  - (c) Fracture, **Blocky**
  - (d) Texture, See
- (6) Impurities in coal, other than bedded,
- (a) Kind, **Sulph. balls, mostly, in upper half.**
  - (b) Position and persistence, **Upper half and near clay veins.**
  - (c) Rejected, Ease of separation,  
**Yes** See
- L. Floor: (1) Material **Blue fire clay**
- (2) Thickness **3 1/2'**
  - (3) Variation **Many sulphur balls.**
- (4) Note character, condition, tendency to heave, relation to undercutting, commercial value.  
**Usually has top of pyrite 1" thick.**  
**Heaves badly when wet.**  
**Clay not undercut.**
- See
- (5) Clay sample No. Location,
- M. Stratigraphy
- (1) Fossiliferous horizons underground,
- Collection No. Location,
- N. Notes on effect of deep drilling in coal mine areas.

See

Collector, *F. H. Kay* Coal No. 5.

State No. **W1212**  
 Co-op. No. **41**



CaCo<sub>3</sub> along contact.

Few pressure planes.

Edges interlocking seems to preclude pressure.

Sketch made near face of Main W.

The filling is of two kinds - hard and soft. Former seems to be calcareous and usually contains a considerable quantity of sulphur. The soft type is clay.

The clay veins are very plentiful in this mine; and the cost of mining is so greatly increased that mine is losing out in competition. Production is about 350 tons.

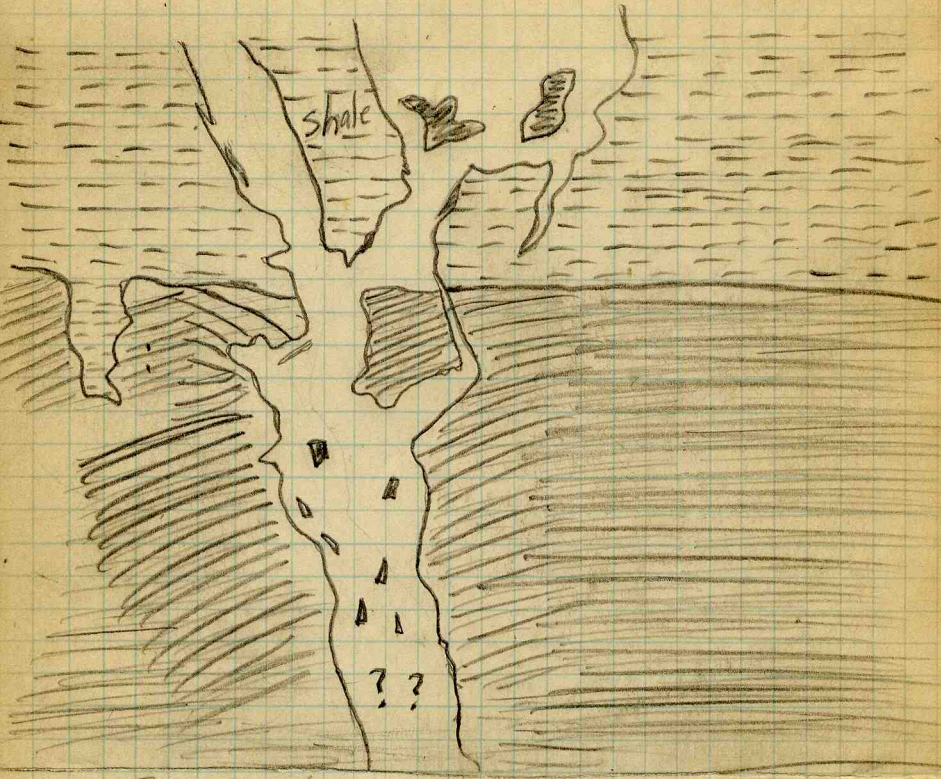
Mining cost from 11-22 cents.

One horseback made coal cost \$4 per ton.

X No. 2. Kay

Coop No. 41.

W1212



CaCO<sub>3</sub> along contact  
 Few pressure planes.  
 Edges interlocking seems to  
 preclude pressure.

Sketch made near face of  
 main W. entry

The filling is of two kinds—  
 hard & soft. Former seems  
 to be calcareous and usually  
 contains a considerable quantity of  
 sulphur. The soft type is clay.  
 The clay veins are very  
 plentiful in this mine; and  
 the cost of mining is so  
 greatly increased

X #1 Kay

#4

W 1212





that mine is losing out  
in competition. Production is  
about 350 tons.

Mining cost from 11-22  
cents.

One horseback made coal  
cost \$1.40 per ton.

W 1212

X #2.

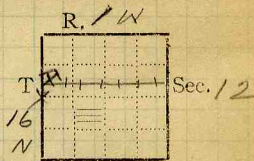
Kay

Coop. #41.



COAL MINING INVESTIGATIONS  
COOPERATIVE AGREEMENT

Mine Name or No., *Niantic*  
mile from *At Niantic*  
Operator, 1912  
*Decatur Coal Co.*  
Operator, 191



Entrance, *Shaft* Elev., ft.  $\left\{ \begin{array}{l} \text{above,} \\ \text{below,} \end{array} \right.$  *Same as Niantic*.  
Depth to bottom coal, *365* ft. Alt. *Nabash.*

SURFACE DATA.

- A. Topography *Level* See
- B. Surficial materials, (1) Character

  - (2) Thickness, (3) Effect on mining and shaft-sinking, of former drainage lines, underground water strata, etc. *No trouble.*

- C. Outcrops, (1) Character, *—* See

  - (2) Structure, *—* See
  - (3) Fossil horizons *—* See
  - Collection No., *—* See
  - (4) Evidences of subsidence, *—* See

- D. Note collection of mine maps, drill records and shaft logs.

See drill record sheet.

- E. Notes on surrounding area,

See

Coal bed name: Local, *#5*  
Collector, *F. H. Kay*  
Mine, *Niantic*  
L.—SURFACE SHEET (Geol.)

Survey   
State No. *W1212*  
Co-op. No. *41*

Co. *Macon*



UNDERGROUND DATA

F. Thickness of rock above bed worked,

- (1) Important variations,

See

G. Note presence of strata having important effect on mining.

See

- (1) Position,
- (2) Character,
- (3) Persistence,
- (4) Other workable coal beds,

See

H. Cap rock,

- (1) Thickness, *4"-12"*
- (2) Height above coal, *3'-5'*

See

I. Immediate roof *slate.*

- (1) Thickness, *3"-5"* (2) Contact with coal,

- (3) Horizontal variation, *3 kinds.*

*black, blue-gray*

See X

J. Draw slate. (1) Thickness, (2) Contacts

*No regular.*

- (3) Persistence

K. Coal bed: Max. *6"* Min. *5"* Av. *5'6"* inches

- (1) Benches,
  - (a) Position,

- (b) Persistence,

See

- (2) Bedded impurities, kind, position in benches, persistence, ease of separation.

*Mostly small sulphur streaks in upper part of bed. None persistent. continuous.*

See

- (3) Irregularities in continuity of bed (due to deposition, erosion, or movement).

*Clay veins.*

See X

- (a) Effect on mining,

*Cost increased*

See X

SECTION				
Ft.	In.	Name	Index	Sym.

Collector, *F. H. Kay* Coal, *#5*

State No. **W 1212**

Mine, *Niantic* Co. *Macon*

Co-op. No. *41*



## UNDERGROUND DATA (cont'd.)

## K. (5) Physical character of coal in benches,

(a) Relative hardness, *Bottom hardest so**in places but not regularly so.*(b) Lustre, *Large percent bright coal.*(c) Fracture, *Blocky.*

(d) Texture,

See

## (6) Impurities in coal, other than bedded,

(a) Kind, *Sulph. balls, mostly in upper half.*(b) Position and persistence, *Upper half and near clay veins.*

(c) Rejected,

Ease of separation,

*Yes*

See

## L. Floor: (1) Material

*Blue fire clay.*

(2) Thickness

*3 1/2'*

(3) Variation

*Many sulphur balls.*

(4) Note character, condition, tendency to heave, relation to undercutting commercial value.

*Usually has top of pyrite 1" thick. Heaves badly when wet. Clay not undercut.*

See

(5) Clay sample No.

Location,

## M. Stratigraphy

(1) Fossiliferous horizons underground,

Collection No.

Location,

## N. Notes on effect of deep drilling in coal mine areas.

See

Collector, *Kay.*Coal # *5*State No. *W 1212*Mine, *Niantic*Co. *Nacon.*Co-op. No. *41*

ILLINOIS COAL MINE NOTES

TOWN *Mantic* T. 16 N R. 1 W S. 5 W 1/4 NW 1/4 *Macon* CO.  
 COAL BED *No. 5.* DATE *Oct. 2 1908* COLLECTOR *Jon Udden*  
 OPERATOR *Decatur Coal Co.,* MINE *Mantic*  
 HEAD OFFICE *Decatur, Ill.* **W1212**  
 CAPACITY *300 tons daily* MARKETS, FRT. *Fowns along Wabash R. R.*  
 ENTRANCE *Shaft 365' north of Wabash R.R.*  
 CAGE *Hand clump home made affair* ENGINES *Wm Ellison 16" x 24 1/2"*  
 DRUM *Wooden 6'*  
 SCREENS *Shaker 2 1/2 round. Rotary 1" 5/8" 1/4"*  
 STORAGE *for 175 tons screen coal.*  
 VENTILATION *Stevens 10' blade 12' long 2' wide. 30000 c. f. air per minute.*  
 GAS, SOURCE *Occasionally in the coal.*  
 COAL THICKNESS, AV. 64 MAX. 72 MIN. 57 ELE. FT.

SECTION LOCATED *Room #6 off 3rd East off Main South.*

No.	In.	No.	In.
1	<i>coal</i>	55 1/2	7
2	<i>Black jack</i>	1/2	8
3	<i>coal</i>	6 1/2	9
4			10
5			11
6			TAPE

NOT SHIPPED NOT INCLUDED *2* CAN # *35* SAMPLE *U 293*  
*Lab 1874*

PHYSICAL PROPERTIES BY NOS. #1. *Hd. bk. bright lustre breaking up into irregular blocks. Very little sulphur. #3 very bright lustre breaking into subcubal pieces.*

ROOF *Bk sh. 3' cap rock 2"-15" gray. sh. 40'*  
 FLOOR *Fire clay 4 1/2'*

DIP *SE in 3300 about 3'* CLEAT

FAULTS, ETC. *slaty veins numerous.*

MACHINES *none. shot off solid*

HAULAGE *mules.*

CARS *wooden 1 ton*

DRAINAGE *Dry*

WORKING SYSTEM *Room & pillar*

ENTRIES, MAIN *15'* CROSS *15'*

PILLARS, MAIN *40'-60'* CROSS *24'*

DRAWN

ROOMS *24' W 200-250 long*  
 ROOM *10'*

TIMBERS *main entries 5 1/2'*

*top lagging also in cross cuts. Props wherever needed.* **W1212 \*\*\***

**#1874**

Note also: Variation in coal, impurities, roof, structure. Collect records, analyses, fossils. Note land values, etc.

*Moses N.B. P 18*



COAL MINING INVESTIGATION

COOPERATIVE AGREEMENT

Operator, *Decatur Coal Co.* Date, *July 31* 191*2*  
 Mine, *Niantic* Located  $\frac{1}{4}$  miles\* *E* from *Niantic*  
 Location in mine, *8<sup>th</sup> E off North on East Side*  
 Total (vertical) depth from surface at point of sampling, *365* ft. ✓

In describing the beds and character of the members, note any member that is rejected by the miner. Note all clay and sulphur partings, whatever their thickness. Exclude from sample all clay and sulphur partings  $\frac{3}{8}$  inch thick or over (and even those of less thickness if they are rejected at mine or tippel).

SECTION OF BED AT POINT SAMPLED

No.	DESCRIPTION	FEET	INCHES
<i>X1</i>	<i>Roof- Black Shale</i>	<i>—</i>	<i>—</i>
<i>2</i>	<i>Coal-fairly clean bright</i>	<i>2</i>	<i>6 <sup>1</sup>/<sub>8</sub></i>
<i>3</i>	<i>Sulphur</i>		<i>8 <sup>1</sup>/<sub>8</sub></i>
<i>4</i>	<i>Coal-streaked with mother of coal</i>	<i>2</i>	
<i>5</i>			
<i>X6</i>	<i>Floor-dark fire clay</i>		
<i>7</i>			
<i>8</i>			
<i>9</i>			
<i>10</i>	<i>Vein contains numerous clay</i>		
<i>11</i>	<i>veins &amp; horse backs -</i>		
<i>12</i>	<i>Roof is full of concretions.</i>		
<i>13</i>			
<i>14</i>			
<i>15</i>			
<i>16</i>			
<i>17</i>			
	TOTAL,	<i>5</i>	<i>2 <sup>8</sup>/<sub>8</sub></i>

*251* ✓

Is coal wet or dry? *-Damp*  
 Time exposed, *0* hours, *30* minutes  
 Weight, *35 #* gross, net.  
 What are the impurities, and how do they occur? *pyrite & mother of coal*  
*in horizontal streaks - several large lenses of pyrite in*  
 What are shipped? *2, 3, 4* (vein)  
 What are excluded from the sample? *1, 5*

*5244*

\*Direction (N., NE., etc.). †Nearest railway station.

Town, *Niantic* Mine, *Niantic* Co. *Decatur Coal Co.*  
 Sample No. *4NB* Can No. *Std 3.* No. *41 W1212*

I.—COAL SAMPLE SHEET. Sampler. *Nebel & Smith*

*#5244*



COAL MINING INVESTIGATION

COOPERATIVE AGREEMENT

Operator, Decatur Coal Co. Date, 7-31 1912  
 Mine, Niantic Located 1/4 miles\* E from † Niantic  
 Location in mine, 1st West North West Room 35-  
 Total (vertical) depth from surface at point of sampling, 365 ft.

In describing the beds and character of the members, note any member that is rejected by the miner. Note all clay and sulphur partings, whatever their thickness. Exclude from sample all clay and sulphur partings  $\frac{3}{8}$  inch thick or over (and even those of less thickness if they are rejected at mine or tippel).

SECTION OF BED AT POINT SAMPLED

No.	DESCRIPTION	FEET	INCHES
x 1	Roof - black shale -		
x 2	Coal, top - (local only) [streaked]	1	3 <sup>3</sup> / <sub>4</sub>
3	Coal - Clean - bright - slightly		8 <sup>1</sup> / <sub>2</sub>
4	Sulphur - parting -		<sup>1</sup> / <sub>4</sub>
5	Coal - Bone streaked		4 <sup>1</sup> / <sub>4</sub>
6	Sulphur - parting -		
7	Coal - Fairly clean but		
x 8	slightly bone streaked	2	8 <sup>3</sup> / <sub>4</sub>
9	Floor - Fire clay -		
10			
11			
12			
13			
14			
15			
16			
17			
TOTAL,		5	1 <sup>3</sup> / <sub>8</sub>

252

Is coal wet or dry? Wet - ✓  
 Time exposed, 0 hours, 25 minutes.  
 Weight, gross, 35# net.  
 What are the impurities, and how do they occur? Bone and sulphur in hor. streaks - Sulphur in vert. streaks  
 What are shipped? 3, 4, 5, 6, 7, (and usually 2)  
 What are excluded from the sample? 1, 8 + 2. 5245

Coal bed, #5

\*Direction (N., NE., etc.) †Nearest railway station.

Town, Niantic Mine, Niantic Co. Decatur Coal Co.  
 Sample No. 41 C Can No. St. D. 46 - No. 41 **W1212**  
 I.-COAL SAMPLE SHEET. Sampler. Smith + Nebel

#5245



COAL MINING INVESTIGATION

COOPERATIVE AGREEMENT

Operator, *Decatur Coal Co.* Date, *July 31* 1912  
 Mine, *Niantic* Located  $\frac{1}{4}$  miles *E* from *Niantic*  
 Location in mine, *3<sup>rd</sup> W. Entry off South on East Side*  
 Total (vertical) depth from surface at point of sampling, *365* ft.

In describing the beds and character of the members, note any member that is rejected by the miner. Note all clay and sulphur partings, whatever their thickness. Exclude from sample all clay and sulphur partings  $\frac{3}{8}$  inch thick or over (and even those of less thickness if they are rejected at mine or tippel).

SECTION OF BED AT POINT SAMPLED

No.	DESCRIPTION	FEET	INCHES
X1	Roof-Black Shale		
2	Coal-fairly clean bright	3	0
3	Sulphur parting thin		
4	Coal-clean-bright		2 $\frac{1}{2}$
5	Sulphur parting thin		
6	Coal-fairly clean		8 $\frac{1}{2}$
7	Mother of Coal		$\frac{1}{4}$
8	Coal-dirty		2 $\frac{3}{4}$
9	Mother of Coal		$\frac{1}{4}$
10	Coal-dirty		2 $\frac{1}{2}$
11	Mother of Coal		$\frac{1}{4}$
12	Coal-fairly clean		9
X13			
X14	Floor-fire clay-dark		
15			
16			
17			
	TOTAL,	5	2

Is coal wet or dry? - *Dry* ✓  
 Time exposed, *0* hours, *35* minutes.  
 Weight, *35* # gross, net.

What are the impurities, and how do they occur? - *mother of coal & a little bone coal + pyrite in horizontal streaks*

What are shipped? *2, 3, 4, 5, 6, 7, 8, 9, 10, 11, 12*

What are excluded from the sample? *1, 13*

Coal bed, *No. 5*

\*Direction (N., NE., etc.). †Nearest railway station.

Town, *Niantic* Mine, *Niantic* Co. *Decatur Coal Co.*  
 Sample No. *41 A* Can No. *Std 33* No. *41 W1212*

I.—COAL SAMPLE SHEET. Sampler. *Nebel + Smith*  
*#5246*