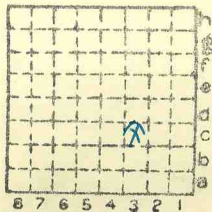


ISGS Index No. 4015

Jack Mine

492



Sec. 1
 T. 9 N.
 S.
 R. 2 E.
 W.
 Index No.

✓



Mine originally operated by: (1)

Date

Original name or number: **Jack Mine**
Illinois Coal Report p.

LATER OPERATORS

Date	Operator	Name or No.
2		
3		
4		
5		
6		
7		
8		
9		
10		
11		
12		
13		
14		

* Also owners #See ownership sheet

Railroad, Wagon, Idle, Abandoned

LOCAL MINE

IDENTIFICATION

County No. **492**

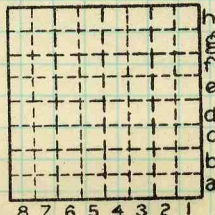
Coal No.

6

Quad. **W. Frankfort**

Part

County **Williamson**



Sec. **1**

T. **9** N. S.

R. **2** E. W.

Index No.

0601 c3

COAL MINE OPERATOR



LOCATION AND ELEVATION

Location: side R. R. side R. R. side Highway No.

on top, map Location sheet

Elevation: Method, 1. Est. () ft. 526

2. Inst. (kind Hand Level) ft.

By G.H.C. N.B. 79. p23 Data sheet

DEPTH

Authority G.H.C. N.B. 79. p23 To coal 70 ft.

Authority Rail to rail ft.

Top of coal above rail. (Est. Rule) ft.

To coal ft.

ALTITUDE OF TOP OF COAL

By estimated data

By instrumental data

456 ft.

Thickness 108"

Max. in. Min. in. Aver. in.

GEOLOGICAL DATA

Mine notes, date

Coop No. Pyr. inv. Coal Ash inv.

CHEMICAL DATA

Table with 4 columns: Analyses Face, U. I., B. M., Others. Rows include Car, Org. Sulf, Ash fusion, Ash anal.

Classification

Misc. tests: Coking. Cleaning Boiler

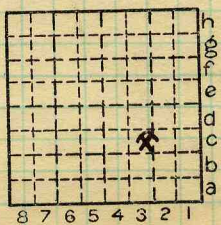
Published descriptions:—

Railroad, Wagon, Idle, Abandoned

IDENTIFICATION

County No. 492 Williamson Quad. W. Frankfort County Williamson

Coal No. 6 Part



Sec. 1 T. 9 S. R. 2 E. Index No.

0601-C3

COAL MINE LOCATION AND DATA