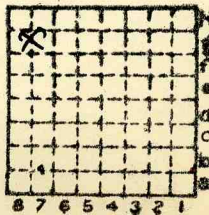




Form 180

OLD BEN COAL CORP. #12
Co. No. 257
Mine index * 58



Sec. 30

T. 6 ~~N.~~
S.

R. 2 ~~E.~~
W.

Index No.





Mine originally operated by: (1)

Date 1907 United Coal Mining Co.

Original name or number: 'Christopher' #1
Illinois Coal Report 1954 p. 75

LATER OPERATORS

Date	Operator	Name or No.
2 <u>1917</u>	<u>Old Ben Coal Corp.</u>	<u>#12</u>

3
4
5
6
7
8
9
10
11
12
13
14

* Also owners #See ownership sheet

Railroad, Wagon, Idle, Abandoned

Shaft 500'

SHIPPING MINE

IDENTIFICATION

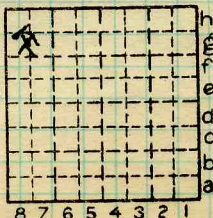
County No. 257

Coal No. 6

Quad. 264

Part

County Franklin



Sec. 30

T. 6 S. N

R. 2 E. W

Index No.

0630.80

COAL MINE OPERATOR



(Sheets) COAL PRODUCTION (Sheet)

Period			Tons		U. S. No.
Mo.	Day	Year	Mo.	Day	
		(Fiscal) 1915	360	629	636
		1927	331	216	

SUMMARIES

No.	to	No.		
1906	-	1930	8	951 106

Railroad, Wagon, Idle, Abandoned

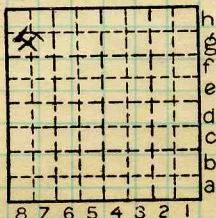
IDENTIFICATION

SHIPPING MINE

County No. 257 Coal No. 6

Quad. 264 Part

County Franklin



Sec. 30

T. 6 N.
R. 2 E.
W.

Index No.

COAL MINE—PRODUCTION

0630.80



LOCATION AND ELEVATION

Location: side l. c. ; c. B. & Q R. R.
 side R. R.
 side Highway No.

on top. map Location sheet

Elevation: Method, 1. Est. () _____ ft.
 2. Inst. (kind PT) 420.6 ft.

By W.B.R. Data sheet 419.875-Co. E.I.

DEPTH

Authority To coal _____ ft.

Authority Rail to rail _____ ft.

Top of coal above rail. (Est. Rule) _____ ft.

To coal 487 ft.

ALTITUDE OF TOP OF COAL

By estimated data _____

By instrumental data _____

-67 ft.

Thickness

Max. in. Min. in. Aver. in.

GEOLOGICAL DATA

Mine notes, date _____

Coop No. 58 Pyr. inv. Coal Ash inv.

CHEMICAL DATA

Analyses Face	U. I. <u>4791, 4793-94</u>	B. M. <u>22686-7-8-9-90-91</u>	Others
Car	U. I.	B. M.	Others
Org. Sulf	U. I.	B. M.	Others
Ash fusion	U. I.	B. M.	Others
Ash anal.	U. I.	B. M.	Others
	U. I.	B. M.	Others

Classification

Misc. tests: Coking. Cleaning Boiler

Published descriptions:—

Railroad, Wagon, Idle, Abandoned

SHIPPING MINE IDENTIFICATION

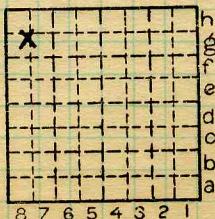
County No. 257

Coal No. 6



Part

Quad. Herrin
 County Franklin



Sec. 30

T. 6 S.

R. 2 E.

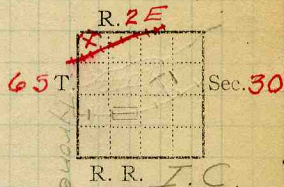
Index No. 0630-88

COAL MINE LOCATION AND DATA



COAL MINING INVESTIGATIONS
COOPERATIVE AGREEMENT

Mine Name or No., *East. (#1)*
 1 mile *E* from *Christopher*
 Operator, 1912
United Coal Mining Co.
 Operator, 191



Entrance, *Shaft* Elev., ^{*416*}*18* ft. { above, *I.C. track 1 mi. E Christopher.*
 Depth to bottom coal, *516* ft. Alt. *-100*

SURFACE DATA.

- A. Topography *Rolling. 50 ft. valley as shown. See*
 B. Surficial materials, (1) Character *Clay; no gravel mentioned.*
 (2) Thickness, *40* (3) Effect on mining and shaft-sinking, of former drainage lines, underground water strata, etc.

No trouble with water. One 8 ft. bed of limestone, 107 ft. above coal. Gray shale below this. Sands + shales above to within 40 ft. of surface.

- C. Outcrops, (1) Character, *Yellow clay. X* See *X*
 (2) Structure, See
 (3) Fossil horizons See
 Collection No.,
 (4) Evidences of subsidence, *No.* See
 D. Note collection of mine maps, drill records and shaft logs.
Shaft log in Chicago.

See drill record sheet.

- E. Notes on surrounding area,

See

Coal bed name: Local, *# 6.*

Survey

Collector, *FH Kay*

State No.

0630

Mine, *East. (#1)*

Co. *Franklin* Co-op. No.

58



UNDERGROUND DATA (cont'd.)

- K. (5) Physical character of coal in benches, *1-2-3.*
- (a) Relative hardness, *Lowest > others.*
- (b) Lustre, *Bright, but, many dirt bands in middle*
- (c) Fracture, *Blocky.*
- (d) Texture, *Laminated* See
- (6) Impurities in coal, other than bedded,
- (a) Kind, *5 + CaCO₃ fine lenses + cracks.*
- (b) Position and persistence, *Apparently less CaCO₃ (calcite) than average for district.*
- (c) Rejected, *No.* Ease of separation, See

- L. Floor: (1) Material *Clay.*
- (2) Thickness *18" to 4 ft.*
- (3) Variation *Same over mine.*
- (4) Note character, condition, tendency to heave, relation to undercutting, commercial value.
*Mostly dry. Heaves when wet
Too variable in thickness for
sample.*

(5) Clay sample No. Location, See

M. Stratigraphy

- (1) Fossiliferous horizons underground,

*Roof free from
plant impressions*

Collection No. Location, See

N. Notes on effect of deep drilling in coal mine areas.

*Mine is gassy in places.
Some of the men amuse themselves
by lighting jets and the entire
face. Great sport but
damp foolishness.*

See

Collector, *F.H. Kay* Coal *Herrin* State No. **0630**

Mine, *East (#1)* Co. *Franklin* Co-op. No. **58**



INDEX

- K Room 10 R. 4th. pan W.
 Section at face, not including top coat 20'±
 Laminated coal, with many small
 dirt bands and some s. Coal
 itself bright with glance streaks 5'
 Blue band - gray shale 1/2 in
 Coal, harder, cleaner, brittle 2-4 1/2"
- C₂ The surface material contains
 only a small amt of gravel, is
 mostly yellow clay. No sands were
 seen which could act as
 water channels.
- G Top coal left for roof is
 mined with some of the
 pillars on retreating.

Collector F.H. Kay

Mine East. (#1)

Coal # 6

Co. Franklin

State No. 0630

Co-op No. 58



COAL MINE NOTES.

0630

COUNTY *Franklin.* TOWN *Christopher* MAP No. *0730*
 T. *6S* R. *2E* S. *30 NW 1/4*
 OPERATOR *United Coal Mining Co.*
 OFFICE *Fisher Bldg. Chicago.*
 MINE **1 Christopher. (Coal mine)*

TIPPLE

ENGINES

BOILERS

DRUM

SHAFT

CAGE

HAULAGE

CARS

VENTILATION

DRAINAGE

SPRINKLING

WORKING SYSTEM

MINING METHODS

SIZE OF ENTRIES—MAIN CROSS ROOM NECK

SIZE OF PILLARS—MAIN CROSS ROOM

SHAFT CHAIN BARRIER

AMOUNT OF TIMBERING SIZE

PROPORTION OF COAL UTILIZED

AMOUNT AND CHARACTER OF WASTE

ACREAGE OF COAL MINED

ACREAGE OF COAL REMAINING

PROPORTION OF MINE RUN AND SCREENED COAL

METHOD OF SIZING RESCREENED

SIZES

PER CENT

PROPORTION AND SIZE OF WASHED COAL

DAILY OUTPUT

UTILIZATION

MARKETS

FREIGHT RATES

SELLING PRICES AT MINE

0730 0630

COAL LAND OWNED LEASED HELD IN FEE

COST OF LAND OWNED LEASED HELD IN FEE

ADDITIONAL NOTES



COAL MINE NOTES.
CONTINUED.

OPERATOR *United Coal Mining Company*
ENTRANCE *United Coal Mining Company*
ELEVATION *United Coal Mining Company*
DEPTH TO FLOOR *United Coal Mining Company*
ALTITUDE OF COAL *United Coal Mining Company*
LOCATION OF SECTION *United Coal Mining Company*

MINE #1 *Christopher.*

NAME OF COAL BED

THICKNESS OF COAL

0630

MAX.

MIN.

AV.

No.	SECTION.	In.
1		
2		
3		
4		
5		
6		
7		
8		
9		
10		
11		
12		
Tape		Total

SAMPLE No.

CAN No.

CONDITION

GROSS WEIGHT

TIME EXPOSED

NOT SHIPPED

NOT INCLUDED

SECTION

Feet

PHYSICAL PROPERTIES BY NUMBERS

ROOF

FLOOR

DIP

FAULTS, ETC.

GAS

0630

0730

COLLECTOR *Savage.*

REFERENCE *C.L. Scroggs*

DATE



COAL MINING INVESTIGATION

COOPERATIVE AGREEMENT

Operator, *United Coal Mining Co.*, Date, *3/29*, 191*2*.
 Mine, *East* Located *1/2* miles* *East* from † *Christopher*
 Location in mine, *Face 6th, South East.*
 Total (vertical) depth from surface at point of sampling, ~~572~~ *507* ft.

In describing the beds and character of the members, note any member that is rejected by the miner. Note all clay and sulphur partings, whatever their thickness. Exclude from sample all clay and sulphur partings $\frac{3}{8}$ inch thick or over (and even those of less thickness if they are rejected at mine or tippie).

SECTION OF BED AT POINT SAMPLED.

No.	DESCRIPTION.	FEET.	INCHES.
1	<i>Coal clean & bright</i>	<i>4</i>	<i>10</i>
2	<i>Dirt, Bony</i>		<i>2 1/2</i>
3	<i>Coal</i>	<i>1</i>	<i>9</i>
4			
5			
6	<i>Coal</i>		
7			
8			
9			
10			
11			
12	<i>Top coal not included</i>		
13			
14			
15			
16			
17	<i>A #1</i>		
TOTAL,		<i>6</i>	<i>9 1/2</i>

Is coal wet or dry? *moist*
 Time exposed, _____ hours, *50* minutes.
 Weight, *64* gross, _____ net.
 What are the impurities, and how do they occur?

What are shipped? *3*
 What are excluded from the sample? *2*

Coal bed, *No 6*
 *Direction (N., NE., etc.) _____ †Nearest railway station.
 Town, *Christopher* Mine, *East (#)* Co. *Fiducis*
SAMPLE NO., *1* **COAL NO.** *135* **Coop. No.** *58*
L.—COAL SAMPLE SHEET. Sampler.



COAL MINING INVESTIGATION

COOPERATIVE AGREEMENT

Operator, *United Coal Mines*, Date, *3/29*, 191*2*
 Mine, *East*, Located *1* miles* *East* from † *Christoph*
 Location in mine, *Room 4 by 5th vein East*
 Total (vertical) depth from surface at point of sampling, *542* ft.

In describing the beds and character of the members, note any member that is rejected by the miner. Note all clay and sulphur partings, whatever their thickness. Exclude from sample all clay and sulphur partings $\frac{3}{8}$ inch thick or over (and even those of less thickness if they are rejected at mine or tippie).

SECTION OF BED AT POINT SAMPLED.

No.	DESCRIPTION.	FEET.	INCHES.
1	<i>Coal clean and bright</i>	<i>1</i>	<i>6</i>
2			
3			
4			
5			
6			
7			
8			
9			
10			
11			
12	<i>top coal sample</i>		
13			
14			
15			
16			
17			
TOTAL,		<i>1</i>	<i>6</i>

Is coal wet or dry?
 Time exposed, *25* hours, *25* minutes.
 Weight, *37* gross, net.

What are the impurities, and how do they occur?

What are shipped? *total*
 What are excluded from the sample? *nothing*

*Direction (N., NE., etc.). †Nearest railway station.

Town, *Christoph* Mine, *East* (†) Co. *Franklin*

SAMPLE NO. *A3* OAN NO. *58*
 I.—COAL SAMPLE SHEET. Sampler. *Jm. Cr.*

#4792



COAL MINING INVESTIGATION

COOPERATIVE AGREEMENT

Operator, *United Coal & Iron*, Date, *3/29*, 191*2*
 Mine, *East* Located *1/2* miles* *East* from *Christopher*
 Location in mine, *Face 6th South East Entry*
 Total (vertical) depth from surface at point of sampling, *542* ft.

In describing the beds and character of the members, note any member that is rejected by the miner. Note all clay and sulphur partings, whatever their thickness. Exclude from sample all clay and sulphur partings $\frac{3}{8}$ inch thick or over (and even those of less thickness if they are rejected at mine or tippie).

SECTION OF BED AT POINT SAMPLED.

No.	DESCRIPTION.	FEET.	INCHES.
1	<i>Coal clean & bright</i>	<i>5</i>	<i>7</i> ✓
2	<i>Clay band</i>		<i>1</i> ✓
3	<i>Coal</i>		<i>3</i> ✓
4	<i>Slat band</i>		<i>4</i> ✓
5	<i>Coal</i>	<i>1</i>	<i>9</i> ✓
6			
7	<i>Coal</i>		
8			
9			
10			
11			
12			
13			
14			
15			
16			
17			
TOTAL,		<i>8</i>	<i>0</i>

Is coal wet or dry?

Time exposed, *58* hours, *72* minutes. net.

Weight, *72* gross, net.

What are the impurities, and how do they occur?

What are shipped? *1, 3, 5*

What are excluded from the sample? *2, 4*

*Direction (N., NE., etc.). Coal bed, *206*
 †Nearest railway station.

Town, *East* Mine, *East* (#*1*) Co. *Franklin*
SAMPLE NO. *A2* OAN NO. *58* No. *58*

I.—COAL SAMPLE SHEET. Sampler, *J. Smith*

#*4791*



COAL MINING INVESTIGATION

COOPERATIVE AGREEMENT

Operator, *United Coal Mining Co.* Date, *3/29*, 191*2*
 Mine, *East* Located *1* miles* *East* from *Christie*
 Location in mine, *Face 6th North West entry*
 Total (vertical) depth from surface at point of sampling, _____ ft.

In describing the beds and character of the members, note any member that is rejected by the miner. Note all clay and sulphur partings, whatever their thickness. Exclude from sample all clay and sulphur partings $\frac{3}{8}$ inch thick or over (and even those of less thickness if they are rejected at mine or tippel).

SECTION OF BED AT POINT SAMPLED.

No.	DESCRIPTION.	FEET.	INCHES.
1	<i>Coal, clean & bright</i>	<i>5</i>	<i>2</i>
2	<i>Dirt Bone</i>		<i>2 1/2</i>
3	<i>Coal clean and bright</i>	<i>1</i>	<i>11</i>
4			
5			
6			
7			
8			
9			
10			
11			
12			
13			
14			
15			
16			
17			
<i>A#4</i>		TOTAL,	<i>7 3 1/2</i>

Is coal wet or dry?
 Time exposed, _____ hours, *53* minutes.
 Weight, *67³* gross, _____ net.
 What are the impurities, and how do they occur?

What are shipped? *1 3*
 What are excluded from the sample? *2*

Town, *Christie* Mine, *East (#1)* Coal bed, *No. 6*
SAMPLE NO. A4 CAN NO. *31* Nearest railway station, _____
 Co. *Franklin*
 No. *578*



CHRISTOPHER. UNITED NO. 1 MINE.

Analyses 22686 to 22691 (p. 33). Bituminous coal, Illinois field, from United No. 1 mine, a shaft mine at Urbain, 1 mile east of Christopher, on the Eldorado branch of the Illinois Central R. R. The mine also has shipping connections with the Chicago & Eastern Illinois R. R. and the Chicago, Burlington & Quincy R. R. Coal bed, No. 6 of the Illinois geological survey; Carboniferous age, Carbonade formation. The coal is of firm character and uniformly thick, averaging 9 feet 5 inches. A "blue band" or dirt band, consisting of bone, shaly coal, or gray shale 18 to 30 inches above the floor, is found almost everywhere. The main roof is gray, impure shale, 15 to 110 feet thick, which falls readily when exposed. The immediate roof consists of 14 to 30 inches of coal of good quality. The floor is hard brittle clay of variable thickness. The shaft is 507 feet deep. The bed was sampled by H. I. Smith July 30 and 31, 1915, as described below:

Sections of coal bed in United No. 1 mine.

Sample.....	A	B	C	D	E
Laboratory No.....	22686	22687	22688	22689	22690
Roof, mam, shale.	<i>Ft. in.</i>	<i>Ft. in.</i>	<i>Ft. in.</i>	<i>Ft. in.</i>	<i>Ft. in.</i>
Coal left up in mining.....	(a) 9 1/4	(a) 1 11 1/2	(a) 1 5 3/8	(a) 1 5 1/2	(a) 11 1/2
Coal.....	1/4	7/8	3/8	1/2	b1 3 1/2
Coal, bony.....	1 5 1/2	8 1/2	3 1/2
"Sulphur".....	1/4	b 1/2
Coal.....	8
Coal, bony.....	1/2	b2 2 1
Coal.....	3 5	1 3	4 1 1/2	3 5	9
Gray coal.....	7 1/2	c 1/2
Coal, bony.....	c 3 1/2	3	c 1
Coal.....	c 6 1/2
"Blue band".....	c 3	c 8	c 4	c 3 1/2	3 1/2
Coal.....	1/2
Coal, bony.....	1 3
Coal.....	1 8 1/2	1 3 1/2	1 5 1/2	1 8 1/2	1 3
Floor, clay.					
Thickness of coal mined.....	6 5 1/2	7 6 1/2	7 5	7 7 1/2	7 3 1/2
Thickness of coal sampled.....	5 11 1/4	6 10 1/4	7 1	7 3 1/2	6 4

a Not measured; estimated thickness 20 inches, seemingly coal of good quality.

b Soft "mother coal," not included in sample.

c Not included in sample.

Section A (sample 22686) was measured at the face of 19 room, 7 east panel, 8 south-east entry. Section B (sample 22687) was measured at the face of 6 room, 5 panel, 4 south entry. Section C (sample 22688) was measured at the face of 6 room, 2 west panel, 9 northeast entry. Section D (sample 22689) was measured at the face of 9 room, 8 panel, 8 southeast entry. Section E (sample 22690) was cut at face of 5 south entry, 250 feet south of 5 panel.

The ultimate analysis of a composite sample made by combining face samples 22686, 22687, 22688, 22689, and 22690 is given under laboratory No. 22691.

The mine is worked on a modification of the room-and-pillar system. In 1915 the coal, as a rule, was undercut with chain breast machines, and then snubbed and shot down with permissible explosives. The coal was sized on shaking screens of different sized openings, making possible a large number of sizes and combination of sizes. Pickers were employed on the cars. Screenings were not washed or coked. There were four loading tracks, with a capacity of 68 loaded and 68 empty cars. The average daily output of the mine was 2,500 tons.

Coal No. 6

Mine-United No. 1

Franklin Co.

Index No. 0630.09