

MARSHALL EQUIP. Co.

COAL REPORT No. L-114

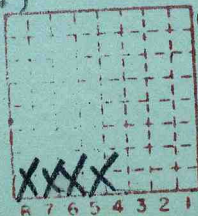
OPENED JULY, 1961

ABANDONED SEP, 1965

ISGS Mine
Index
#3307

STRIP MINE Mary Ann #1

SALINE COUNTY



Sec. 23
T. 9 S.
R. 7 E.
Index No.



(Sheets) COAL PRODUCTION (Sheet)

Period			Tons		
Mo.	Day	Year	Mo.	Day	Year
		1960			14 000
		1961			119 020
		1962			186 866
		1963			199 917
		1964			180 610
		1965			124 429

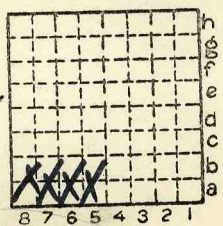
SUMMARIES

No.	to	No.	
	1961	TO 1965	824842

Railroad, Wagon, Strip, Idle, Abandoned

IDENTIFICATION

County No. _____ Coal No. 5
 Coal Report No. L-114
 Quad. _____
 County SALINE



Sec. 23
 T. 9 S. N
 R. 7 E. W
 Index No. _____

