

2063

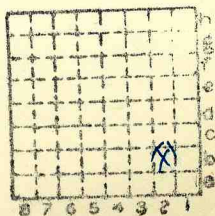


Form 180

Henrietta CC

ME 191

118



Sec.	10	
T.	4	N. 8
R.	8	E. W.
Index No.		

✓



Mine originally operated by: (1)

Date 1898 Home Trade Coal Co.

Original name or number: 1898
 Illinois Coal Report 1898 p.

LATER OPERATORS

Date	Operator	Name or No.
2 1902	Edwardsville Home Trade Coal Co. (Local 1902--1910)	
3 1904	Home Trade Coal Co.	
4 1909	Edwardsville Home Trade Coal Co.	
5 1914	Home Trade Coal Co.	
6 1915	Edwardsville Home Trade Coal Co.	
7 1917	Madison Co. Mg. Co. #1	
7 1926	Henrietta Coal Co.	"Home Trade"
8 1916	Madison County Mining Co.	
9 1932	Madison County Coal & Mining Co.	
10 1933	Idle-Henrietta Co.	"Home Trade"
11 1934	Idle	
12		
13		
14		

* Also owners

#See ownership sheet

Railroad, Wagon, Idle, Abandoned
 I.T.R.R. SHIPPING MINE

IDENTIFICATION

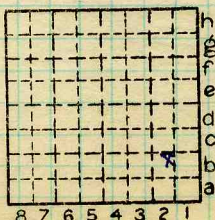
County No. 118

Coal No. 6

Quad. 220

Part 9

County Madison



Sec. 10

T. 4 N.

R. 8 W.

Index No.

1510 b2

COAL MINE OPERATOR



(Sheets) COAL PRODUCTION (Sheet)

Period						Tons
Mo.	Day	Year	Mo.	Day	Year	
					1935	

#3

SUMMARIES

1898	to	1935	1	276008
------	----	------	---	--------

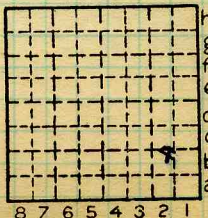
Railroad, Wagon, Idle, Abandoned

IDENTIFICATION

County No. 118 Coal No.

Quad. Part

County Madison



Sec. 10

T. 4 N.
R. 8 W.

Index No. 1510 b2



LOCATION AND ELEVATION

Location: side R. R.
 side R. R.
 side Highway No.

on top. map Location sheet

Elevation: Method, 1. Est. () _____ ft.
 2. Inst. (kind Transit) 498.2 ft.

By Sheppard + Morgan, C.E. Data sheet
 DEPTH

Authority To coal _____ ft.
 Authority Rail to rail _____ ft.
 Top of coal above rail. (Est. Rule) _____ ft.
 To coal 135 ft.

ALTITUDE OF TOP OF COAL

By estimated data _____
 By instrumental data 363 ft.

Thickness
 Max. 78 in. Min. 54 in. Aver. 64 in.

GEOLOGICAL DATA

Mine notes, date _____

Coop No. 191 Pyr. inv. Coal Ash inv.

CHEMICAL DATA

Analyses Face	U. I.	B. M. <u>80942-3-4+5</u>	Others
Car	U. I.	B. M.	Others
Org. Sulf	U. I.	B. M.	Others
Ash fusion	U. I.	B. M.	Others
Ash anal.	U. I.	B. M.	Others
	U. I.	B. M.	Others

Classification

Misc. tests: Coking. Cleaning Boiler

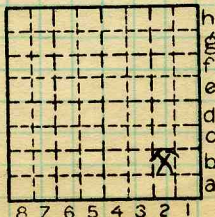
Published descriptions:—

Railroad, Wagon, Idle, Abandoned

IDENTIFICATION

County No. 118
 Quad. 220
 County Madison

Coal No. 6
 Part 9



Sec. 10
 T. 4 N.
 R. 8 W.
 Index No.

1510.2b

COAL MINE LOCATION AND DATA

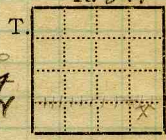


Mine Name or No., *Madison County*

R. 8 W

1/4 mile W from *Edwardsville*

Operator, 1911 *Madison County Mining Co*



Operator, 191

R. R. *Wabash*

Entrance, *shaft* Elev., *498.2* ft. (above, *3632*)

Depth to ~~bottom~~ coal, *135* ft. (below, *3632*) Alt. *3632*

SURFACE DATA.

A. Topography, *Hilly - relief about 100'* See

B. Surficial materials. (1) Character, *Drift & loess*

(2) Thickness, *20'* (3) Effect on mining and shaft-sinking, of former drainage lines, underground water strata, etc. *No information.*

C. Outcrops, (1) Character, See

(2) Structure, See

(3) Fossil horizons, See

Collection No.,

(4) Evidences of subsidence, See

D. Note collection of mine maps, drill records and shaft logs.

Shoppard & Morgan, Edw. Nat'l Bank, 2nd Floor

See drill record sheet,

E. Notes on surrounding area,

See

Coal bed name: Local, Survey No. *6*

Collector, *Natzaband*

Mine, *Madison County* Co. *Madison* Index No. *1510.82*



Town, **Edwardsville**

Local Authority,

Level: Auth., *Buell #1*

Method,

R. R., *Wabash*

Location: authority, *Buell #1*

Correspondence: 7/27/17

Madison Co. Mining Co. Edwardsville

Operator *Millhouse Snp*

Mine Name or No.

Surface alt., *130* ft.

Depth to coal, ft.

Alt. top coal, ft.

Thickness: Av. *60* in.

Max. in., Min. in.

R. 8 W



Sec. 10

(Show R. R.)

Edwardsville Home Trade C.Co.

Successor to

Date

Succeeded by

Date

Succeeded by

Date

Madison Co. Mining Co. No. 1.
F. Lauval, Lessee
Edwardsville, Ill

PRODUCTION.

19									U.S. No.	
<i>27</i>	<i>1928</i>	<i>Oliver's Wintable</i>	<i>of</i>	<i>in Perry Co Mining Co.</i>	<i>Letter from</i>	<i>Co. says located</i>	<i>in sec. 15 - Better</i>	<i>locate it see</i>	<i>19 where</i>	<i>126</i>
		<i>40-081</i>								

Geol. Notes? *Yes*

Coop. No. *19*

Coal secs.? *No.*

Analyses No. *80942-3-4-5*

Examined by

Ref.

Coal bed name: Local

Survey No. *6*

County

Madison #119

Index No. *1510.82*

K.—ACTIVE SHIPPING OR LOCAL COAL MINE.



- F. Thickness of rock above bed worked, *115'*
 (1) Important variations, *No information*

See

- G. Note presence of strata having important effect on mining,

White shale, treacherous roof See

- (1) Position, *Above coal*
 (2) Character, *Soft, massive, light grey shale*
 (3) Persistence, *In the east workings*
 (4) Other workable coal beds,

See

- H. Cap rock, *Limestone*

- (1) Thickness, *35'*
 (2) Height above coal, *Feather edge to 3'*

See

- I. Immediate roof, *Shale or shaly limestone*

- (1) Thickness, *0-3'* (2) Contact with coal,

- (3) Horizontal variation, *Occurs only in the east*

See

- J. Draw slate. (1) Thickness, (2) Contacts

None

- (3) Persistence,

- K. Coal bed: Max. *78* Min. *54* Av. *64* inches

- (1) Benches, *Two*
 (a) Position, *Above & below B.B.*

- (b) Persistence, *Thruout mine*

See

- (2) Bedded impurities, kind, position in benches, persistence, ease of separation.

Shale bands and charcoal partings. B.B. composed of grey shale & pyrite lenses. Coal breaks free.

See

- (3) Irregularities in continuity of bed (due to deposition, erosion, or movement),

A few small slips. Do not affect coal.

See

- (a) Effect on mining, *Require timbering*

See

SECTION				
Ft.	in.	Name	Sym.	
20		Clay	B	
80		Shale	F	
35		Ls	H	
3		Sh.		
5	4	Coal		
3		Floor clay		

1 Dir = 10'

Collector, *Netzeband*

Mine, *Madison County* Co. *Madison*

M.—UNDERGROUND SHEET (Geol.)

Coal: Survey No. *6*

Index No. *1510.82*



K. (5) Physical character of coal in benches,

(a) Relative hardness, *Coal below B.B. softer than Belleville district. Rest about average for Belleville.*

(b) Lustre,

(c) Fracture, *Blocky, cleat N3W*(d) Texture, *Laminated*

See

(6) Impurities in coal, other than bedded,

(a) Kind, *Pyrite lenses & bands, calcite & gypsum vein fillings*(b) Position and persistence, *Above B.B. thruout mine*(c) Rejected, *Large lenses* Ease of separation,

See

L. Floor: (1) Material, *Floor clay*(2) Thickness, *6" to 3'*

(3) Variation,

(4) Note character, condition, tendency to heave, relation to undercutting commercial value. *Light gray, plastic when wet; no**trouble from heaving; used to undercut upon.**Floor clay sampled by Southern Acid & Chem. Co. and reported favorable for use in making tile.*

See

(5) Clay sample No.

Location,

M. Stratigraphy,

(1) Fossiliferous horizons underground,

Collection No.

Location,

N. Notes on effect of deep drilling in coal mine areas.

See

Collector, *Netzeband*Coal: Survey No. *6* Mine, *Madison County* Co. *Madison*Index No. *1510.82*



Symbol Description Inches

Aug. 11, 1921

Face of Main W.

Limestone roof (Impure ls.)
Medium grey shale 2"

- | | |
|--------------------------|--------|
| 1 Coal | 20 |
| 2 Charcoal & pyrite | 1/4 |
| 3 Coal calcite stringers | 20 1/2 |
| 4 Pyrite lens | 1/4 |
| 5 Coal | 6 1/2 |
| 6 Pyrite lens | 1/8 |
| 7 Coal | 8 1/4 |
| 8 Pyrite lens | 3/8 |
| 9 Coal | 4 3/4 |
| 10 Shale BB. | 1 1/2 |
| 11 Coal | 11 1/2 |

Tap 73 3/4

Condition - Dry, fresh
Weight 22 1/4
Time 2 hrs 30 min.
Excluded. 8, 10

1465
12:35
2:30

74

(Scale: 1 division = 3 inches).

Sample No. T-21-13 Can No. 20969 Lab. No. 80942

Collector, Thurston Coal: Survey No. 6

Mine, Madison County Co. Madison Index No. 1510.82

Q.—COAL SECTION SHEET.



Symbol

Description

Inches

Aug 11, 1921

Face of 18th S.

Limestone roof

1 Coal calcite stringers

2 Charcoal band

3 Coal

4 Shale band

5 Coal

6 Shale

7 Coal

8 Shale & pyrite

9 Coal

10 Grey shale BB.

11 Coal

Tape 7 1/4

Condition - Damp, fresh

Time 2 hrs, 24 min

Weight 27#

Excluded 4, 8, 10

13:15

(Scale: 1 division = 3 inches).

Sample No. T 21-14 Can No. 833 Lab. No. 80943

Collector, Thurston

Coal: Survey No. 6

Mine, Madison County Co. Madison

Index No. 1510.82

Q.—COAL SECTION SHEET.



Symbol Description Inches

Aug. 11, 1921

Face of Main E
Limestone roof

1 Coal calcite + pyrite stringers	31
2 Shale band	7/2
3 Coal	10
4 Pyrite	3/8
5 Coal	19 3/4
6 Shale B.B.	2
7 Coal	12
8 Coal	
9 Tape 75 1/2	
10 Coal	

Condition Wet, fresh
Time 2 hrs. 15 min
Weight 31.4
Excluded 2, 4, 6

Aug 11
15:56
215

75 1/2

(Scale: 1 division = 3 inches).

Sample No. T-21-15 Can No. 935 Lab. No. 80944
 Collector, Thurston Coal: Survey No. 6
 Mine, **Madison County** Co. **Madison** Index No. **1510.82**
 Q.—COAL SECTION SHEET.