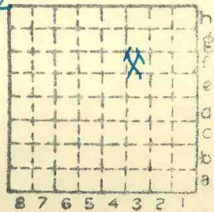


"old"
Consol. CC. Lake Ck Pine
1

410



Sec. 18
 T. 8^{N.} S.
 R. 3^{E.} W.
 Index No.

✓ MI 148



Mine originally operated by: (1)

Date **Big Muddy Coal & Iron Co**

1908

Original name or number:

Lake Creek

Illinois Coal Report **1882-30.**

p.53

LATER OPERATORS

Date

Operator

Name or No.

1921

Consolidated C.Co of St Louis

Lake Creek

2
3
4
5
6
7
8
9
10
11
12
13
14

* Also owners

#See ownership sheet

Railroad, Wagon, Idle, Abandoned

SHIPPING MINE IDENTIFICATION

County No. **410**

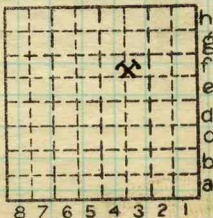
Coal No.

6

Quad. **W. Frankfort**

Part **5**

County **Williamson**



Sec. **18**

T. **8** S.

R. **3** E.

Index No. **0218-f3**

COAL MINE OPERATOR



| Period | | | | | | Tons | |
|--------|-----|------|-----|-----|------|--------|--|
| Mo. | Day | Year | Mo. | Day | Year | | |
| 1 | 1 | 1931 | 12 | 31 | 1931 | (idle) | |
| | | 1932 | | | 1932 | (idle) | |
| | | 1933 | | | 1933 | (idle) | |
| | | 1934 | | | 1934 | (idle) | |
| | | 1935 | | | 1935 | (idle) | |
| | | 1936 | | | 1936 | (idle) | |

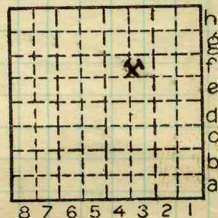
SUMMARIES

| No. | to | No. | | | |
|------|--------|------|---|-----|-----|
| 1908 | Dec 31 | 1930 | 5 | 681 | 219 |

Railroad, Wagon, Idle, Abandoned IDENTIFICATION

County No. 410 Coal No. 6

Quad. W. Frank Part 5
County Williamson



Sec. 18

| | | |
|----|---|----|
| T. | 8 | N. |
| R. | 3 | S. |
| | | E. |
| | | W. |

Index No. 0218-f3



LOCATION AND ELEVATION

Location: side R. R.
side R. R.
side Highway No.

on top. map Ph-11th location sheet

Elevation: Method, 1. Est. () ft.

2. Inst. (kind Handlevel) 456 ft.

By G.H.C Nb.88 p.68 Data sheet

DEPTH

Authority To coal 313 ft.

Authority Rail to rail ft.

Top of coal above rail. (Est. Rule) ft.

To coal ft.

ALTITUDE OF TOP OF COAL

By estimated data

By instrumental data

143 ft.

Thickness

Max. in. Min. in. Aver. 86 in.

GEOLOGICAL DATA

Mine notes, date 1921 (Wilson) 1925-30 (Cady)

Coop No. Pyr. inv. Coal Ash inv.

148

CHEMICAL DATA

Table with 4 columns: Analyses Face, U. I., B. M., Others. Rows include Car, Org. Sulf, Ash fusion, Ash anal.

Classification R.I. 134 U.C.I. 147

Misc. tests: Coking. Cleaning Boiler

Published descriptions:—

Railroad, Wagon, Idle, Abandoned

IDENTIFICATION

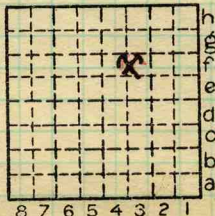
County No. 410

Coal No. 6

Quad. W. Frankfort

Part 5

County Williamson



Sec. 18

T. 8 N.

R. 3 E.

Index No. 0218 f3

COAL MINE LOCATION AND DATA

Sample Collected in Lake Creek
mine for Dr. machine

Depth

Top - coal

Total \approx 7'0"

- at 1'8" Bright coal - wood rough face
muff 8"
- 1/8" Fusam Band
- at 1'11 1/8" Brylton
- 1/8" Fusam Band
- at 2'6" Brylton
- 1/4" Fusam - rough
- at 3'9" Coal - soft
- 1/2" Fusam - rough
- at 4'0" 3/4" Bone band
coal
- 5'5" 1" Blue band
- Bottom coal
- 7'0" Bottom coal

Five Notes



Williamson Co. Johnson City ^{T. 8. R. 3, S. 14, SE 1/4}
 OPERATOR *Lake Creek Coal Co. Consolidated Coal Co.*
 ENTRANCE _____ NAME OF COAL BED _____ MINE _____ 0218
 ELEVATION _____ THICKNESS OF COAL _____

DEPTH TO FLOOR 319 MAX. _____ MIN. _____ AV. _____

ALTITUDE OF COAL _____

LOCATION OF SECTION *Main West entry 55' from shaft.*

No. _____ SECTION. _____

| No. | SECTION. | In. |
|-----|----------------------|-------|
| 1 | Soapstone many feet. | |
| 2 | Soft top coal | 22 |
| 3 | Boney coal 1/2" | 1" |
| 4 | Coal | 70" |
| 5 | Blue Band 1/4" | 1" |
| 6 | Coal | 25" |
| 7 | Fire Clay. | |
| 8 | | |
| 9 | | |
| 10 | | |
| 11 | | |
| 12 | | |
| | Tape | Total |

SECTION

| Feet |
|------|
| |
| |
| |
| |
| |
| |
| |
| |
| |
| |
| |
| |
| |

SAMPLE No. *G/27*

CAN No. _____

CONDITION _____

GROSS WEIGHT _____

TIME EXPOSED _____

NOT SHIPPED _____

NOT INCLUDED *1/5*

PHYSICAL PROPERTIES BY NUMBERS

ROOF _____

FLOOR _____

DIP _____

FAULTS, ETC. _____

GAS _____

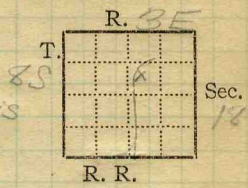
COLLECTOR *Grout*

REFERENCE *M.B. 7 P 83*

DATE _____

0218-F3

Mine Name or No., *Lake Creek*
at mile from *Johnson City*
Operator, 191*1*
Consolidated Coal Co. of St. Louis
Operator, 191



Entrance, *Shaft* Elev., *450* ft. (above, *sealerol. Mo. Pac.*
(below, *132*)
Depth to ~~bottom~~ coal, *318* ft. Alt.

SURFACE DATA.

- A. Topography, *Rolling - Swampy close ground mine* See
- B. Surficial materials. (1) Character, *Till*
- (2) Thickness, *No information* (3) Effect on mining and shaft-sinking, of former drainage lines, underground water strata, etc. *No information.*

- C. Outcrops, (1) Character, See
- (2) Structure, See
- (3) Fossil horizons, See
- Collection No.,
- (4) Evidences of subsidence, See

D. Note collection of mine maps, drill records and shaft logs.
For Elev. See C.L. Moorman, Railway Exchange Bldg, St. Louis, Mo.
For log See James Bowie, Gen. Supt., St. Louis See drill record sheet,

E. Notes on surrounding area,

See

F. Thickness of rock above bed worked, *No information*
 (1) Important variations, See

G. Note presence of strata having important effect on mining, See
Gray shale

- (1) Position, *Over coal*
 (2) Character, *Comes down where top coal is drawn.*
 (3) Persistence, *Thruout mine*
 (4) Other workable coal beds, *none*
 See

H. Cap rock, *Not seen in mine.*
 (1) Thickness, *Reptd. to be about*
 (2) Height above coal, *14' over coal.*
 See

I. Immediate roof, *Gray Shale*
 (1) Thickness, (2) Contact with coal, *Ave. about 14' Regular-light.*
 (3) Horizontal variation, See

J. Draw slate. (1) Thickness, (2) Contacts
None
 (3) Persistence, See

K. Coal bed: Max. *132* Min. *84* Av. *120* inches
 (1) Benches, *Top coal above & below B.B.*
 (a) Position, *Top coal represents the top 24" (Ave.)*
 (b) Persistence, *top coal left wherever possible.*
 See
 (2) Bedded impurities, kind, position in benches, persistence, ease of separation. ? *Lis. raphd*

Charcoal lenses; B.B. 3/4-1" shale 14 *Shale*
 See 10 *Coal*

(3) Irregularities in continuity of bed (due to deposition, erosion, or movement, *Faults* See X'283
 (a) Effect on mining, *Do not seriously interfere* See
 = 1 Div = 4'

| SECTION | | | | |
|---------|-----|------|-------|------|
| Ft. | In. | Name | Index | Sym. |
| | | | | |
| | | | | |
| | | | | |
| | | | | |
| | | | | |
| | | | | |
| | | | | |
| | | | | |
| | | | | |
| | | | | |
| | | | | |

Collector, *Wilson* Coal: Survey No. *6*
 Mine, *Lake Creek* Co. *Williamson* Index No. *0218.E3*
 M.—UNDERGROUND SHEET (Geol.)

K. (5) Physical character of coal in benches,

(a) Relative hardness, *About same throughout bed.*(b) Lustre, *Bright to glance*(c) Fracture, *Cleat See X1*(d) Texture, *Laminated,* See

(6) Impurities in coal, other than bedded,

(a) Kind, *Pyrite stringers*(b) Position and persistence, *Above B.B.*

(c) Rejected, Ease of separation, See

L. Floor: (1) Material, *Dark gray F.C., full of slips.*(2) Thickness, *3" - 4"*

(3) Variation,

(4) Note character, condition, tendency to heave, relation to undercutting commercial value.

In N. & S. part of Mine F.C. is hard and heaves little. In E. part it is soft and causes squeezes. On the tops of the "hills" or small irregularities in the lay of the coal, there is but a few inches of F.C. while in the "swags" or basins it is 2-3-4' thick.

See

(5) Clay sample No. Location,

M. Stratigraphy,

(1) Fossiliferous horizons underground,

Collection No. Location,

N. Notes on effect of deep drilling in coal mine areas.

See

Collector, *Wilson*Mine, *Lake Creek* Co. *Williamson*

N.—UNDERGROUND SHEET (Geol.)

Coal: Survey No. *6* Index No. *0218-E3*

K50 Cleat: 9th W off Main N, Room #2
Face of coal poorly developed; it runs
irregularly $S 4^{\circ} W$.

At face of Main S, face of coal is
irregularly developed, also.
Here it runs $N 25^{\circ} W$.

In 12th Room off 2nd E off 8th S off
Main E, where last sample was taken,
cleat is not developed.

100'

Roof

Soft shale

Floor

Vert. Scale Approx 1 in = 1 foot

Strike approx. N 40° W

Location 800' from bottom on Main No.

Sketch on E wall of entry

This fault is seen in Main E 450' from bottom, in the 3rd W.N. 200' from bottom, & in the N off 3rd W.N. 320' from bottom.

This is the same (reptd.) fault which was seen in Old Ben No 18 at Johnson City (See Notes for that Mine)
The general direction of faulting in this mine & vicinity seems to be N.W. - S.E.

H3



(36713-500-7-20)

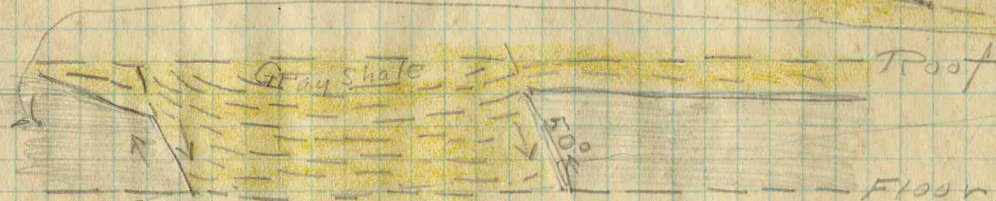
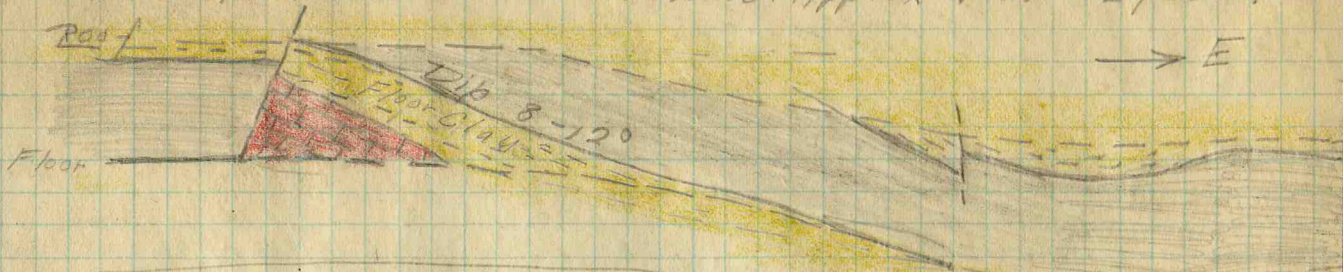
INDEX

Index No. 218.F3
County Williams

EXTRA NO. 2

Collector Wilson
X-21

Location: 1st & 2nd W. off main S; 100 ft from mouth
of entry. This is the only place this fault is seen
Trend N 10° W Vert Scale Approx 1 in = 2 feet.



Continuation of first sketch

Sketch represents a South Wall.
total horizontal distance represented is approx. 200'

Hs

(36713-500-7-20)

INDEX

Collector

Wilson

X-12

EXTRA NO. 3

County

Index No. 0218.F3

Williamson

Operator, *Consolidated Coal Co. of St. Louis* Date *July 21, 1921*
 Mine, *Lake Creek* Sec. *18* T. *85* R. *3E*
 Located, *77* miles from *Johnston City*
 Location in mine, *Room 2 off 9th W off Main N.*

| GRAPHIC SECTION | | DESCRIPTION OF SECTION (AT POINT SAMPLED) | |
|-----------------|-----|---|----------------|
| In. | No. | No. (Note character and thickness of roof) | Inches |
| | | <i>Gray shale</i> | |
| | | <i>1 Coal (left as roof)</i> | <i>30" App</i> |
| | | <i>2 Coal</i> | <i>11 1/2</i> |
| | | <i>3 Charcoal</i> | <i>4/8</i> |
| | | <i>4 Coal</i> | <i>8 7/8</i> |
| | | <i>5 Charcoal</i> | <i>4/8</i> |
| | | <i>6 Coal</i> | <i>44 3/4</i> |
| | | <i>7 BB (grey sh)</i> | <i>6/8</i> |
| | | <i>8 Coal</i> | <i>20</i> |
| | | <i>Tape 85 1/4</i> | <i>85 3/4</i> |
| | | <i>Light grey floor clay</i> | |
| | | (Note character and thickness of floor) | |
| | | Total thickness of coal. | <i>115</i> |
| | | Condition, <i>Damp</i> Time, <i>4</i> hr. <i>25</i> min. | |
| | | Wt. Gross, <i>34</i> lbs. Net, <i>4</i> lbs. | |
| | | What Nos. shipped by Co.? | |
| | | Excluded from sample: No. <i>1, 7</i> | |
| | | Sample represents <i>84 1/4</i> in. tons. | |
| | | Impurities? How do they occur? <i>Charcoal particles, shale (BB.)</i> | |

Sample No. *N-21-92* Can No. *6877* Lab. No. *80603*
 Collector, *Netzeband* Coal: Survey No. *6*
 Mine, *Lake Creek* Co. *Williamson* Index No. *0218.53*

Operator, *Consolidated Coal Co. of St. Louis* Date *July 21, 1921*
 Mine, *Lake Creek* Sec. *18* T. *8 S* R. *3 E*
 Located, *7 1/2* miles from *Johnston City*
 Location in mine, *Face of Main J.*

| GRAPHIC SECTION | | DESCRIPTION OF SECTION (AT POINT SAMPLED) | | |
|-----------------|-----|---|---|---------------|
| In. | No. | No. | (Note character and thickness of roof) | Inches |
| | | | <i>Grey shale.</i> | |
| | | <i>1</i> | <i>Coal (left as roof) 84" App.</i> | |
| | | <i>2</i> | <i>Coal</i> | <i>13 1/2</i> |
| | | <i>3</i> | <i>Charcoal</i> | <i>2 1/2</i> |
| | | <i>4</i> | <i>Coal with pyrite stringers</i> | <i>9 1/2</i> |
| | | <i>5</i> | <i>Charcoal</i> | <i>1 1/2</i> |
| | | <i>6</i> | <i>Coal</i> | <i>20</i> |
| | | <i>7</i> | <i>Charcoal</i> | <i>2 1/2</i> |
| | | <i>8</i> | <i>Coal</i> | <i>20 1/2</i> |
| | | <i>9</i> | <i>BB (grey shale)</i> | <i>1</i> |
| | | <i>10</i> | <i>Coal</i> | <i>23</i> |
| | | | <i>Tape 87 1/4</i> | <i>87 1/2</i> |
| | | | <i>Soft, light grey floor clay</i> | |
| | | | (Note character and thickness of floor) | |
| | | | Total thickness of coal. | <i>111</i> |
| | | | | <i>10:35</i> |
| | | Condition, <i>Dry</i> | Time, <i>3</i> hr. <i>15</i> min. | |
| | | Wt. Gross, <i>37</i> lbs. | Net, <i>4</i> lbs. | |
| | | What Nos. shipped by Co.? | | |
| | | Excluded from sample: No. <i>1, 9</i> | | |
| | | Sample represents <i>86 1/4</i> in. | | tons. |
| | | Impurities? How do they occur? | | |

Sample No. *N-21-93* Can No. *07100* Lab. No. *80602*
 Collector, *Natzeband* Coal: Survey No. *6*
 Mine, *Lake Creek* Co. *Williamson* Index No. *0218.F3*
 R.—COAL SAMPLE SHEET.

Operator, *Consolidated Coal Co. of S. Davis* Date *July 26, 1921*
 Mine, *Lake Creek* Sec. *18* T. *85* R. *3E*
 Located, *7 1/2* miles from *Johnston City*
 Location in mine, *Room 12 off 2nd E. off 8th S. off Main E*

| GRAPHIC SECTION | | DESCRIPTION OF SECTION (AT POINT SAMPLED) | | |
|-----------------|-----|---|---|---------------|
| In. | No. | No. | (Note character and thickness of roof) | Inches |
| | | | <i>Gray shale.</i> | |
| | | <i>1</i> | <i>Coal (left as roof) 24" App.</i> | |
| | | <i>2</i> | <i>Coal</i> | <i>4 1/4</i> |
| | | <i>3</i> | <i>Charcoal</i> | <i>1/8</i> |
| | | <i>4</i> | <i>Coal</i> | <i>16 1/2</i> |
| | | <i>5</i> | <i>Charcoal</i> | <i>7/8</i> |
| | | <i>6</i> | <i>Coal</i> | <i>20</i> |
| | | <i>7</i> | <i>Charcoal</i> | <i>3/4</i> |
| | | <i>8</i> | <i>Coal</i> | <i>3</i> |
| | | <i>9</i> | <i>Charcoal</i> | <i>1 1/2</i> |
| | | <i>10</i> | <i>Coal</i> | <i>16</i> |
| | | <i>11</i> | <i>Bone</i> | <i>1/2</i> |
| | | <i>12</i> | <i>Coal</i> | <i>6 3/4</i> |
| | | <i>13</i> | <i>B.B. Shale</i> | <i>3/4</i> |
| | | <i>14</i> | <i>Coal</i> | <i>23 1/2</i> |
| | | | <i>Tape 92 1/2"</i> | <i>92 3/4</i> |
| | | | <i>Soft, tight gray floor clay</i> | |
| | | | (Note character and thickness of floor) | |
| | | | Total thickness of coal. | <i>116</i> |
| | | Condition, <i>Dry</i> | Time, <i>12:05</i> hr. <i>9</i> min. | |
| | | Wt. Gross, <i>37</i> lbs. | Net, <i>4</i> lbs. | |
| | | What Nos. shipped by Co.? | | |
| | | Excluded from sample: No. <i>1, 13</i> | | |
| | | Sample represents <i>9 1/4</i> in. tons. | | |
| | | Impurities? How do they occur? | | |

Sample No. *N-21-94* Can No. *5392* Lab. No. *80604*

Collector, *Netzeband* Coal: Survey No. *6*

Mine, *Lake Creek* Co. *Williamson* Index No. *0218.Fg*

Cady
1925-30±Lake Creek Mine - Consolidated Coal Co Shows

Treated fault at several places in mine

On 3+4th west on Main N. get fault
: running about NW - with upthrow on west
of about 4'. Fault a reverse fault. Saw
same fault at 2

On 7-8, N on 3-4 W - at head of entry get
rock wall - at fault. Normal fault with
down throw apparently on N. This the
mine manager seem to think either
downing south toward fault are 10 ft higher.
Certainly has down throw on N - and amt
of throw exceeds thickness of coal -

This fault pass seems to die out short
distance SE - this a small reverse fault
crosses the 3-4 W - at a point that would
lie on its continuation. Intermediate rooms
do not show fault

Cady
1025-204

Lake Creek - cont

The largest fault is to be seen in main ~~W~~ off S - just off S - There a fault bearing NW - as up thrown on west about 13 ft - From fault coal dips strongly west - for 100-150 ft - probably a number is 5° Fault about vertical. Then - a reverse for normal fault & down throw on west letting down shale - but not to L - which about 30 ft above coal - Fault has - SW - 50 ft W - another fault - reverse - bringing (one) coal to about 2 ft above floor entry hence coal lies level for some distance + finally rises to about its height where faulted to maximum

Sub-Creek -

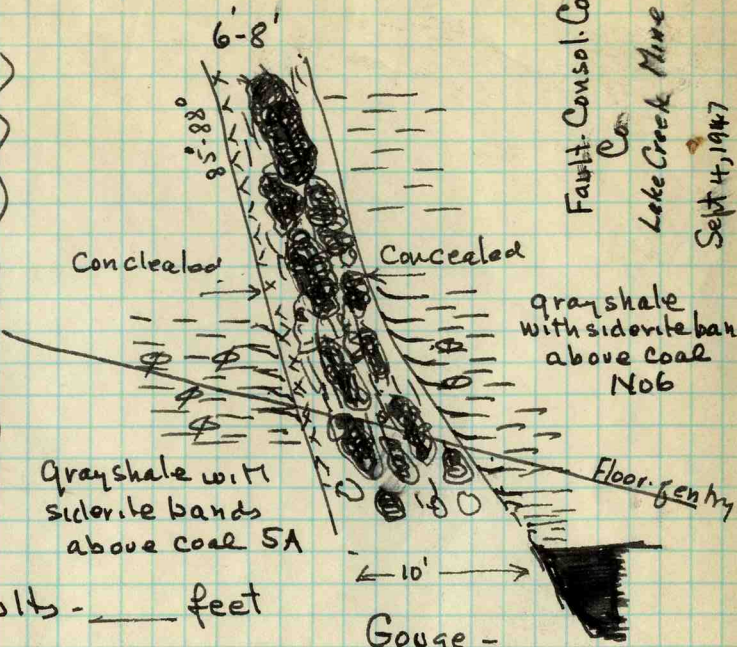
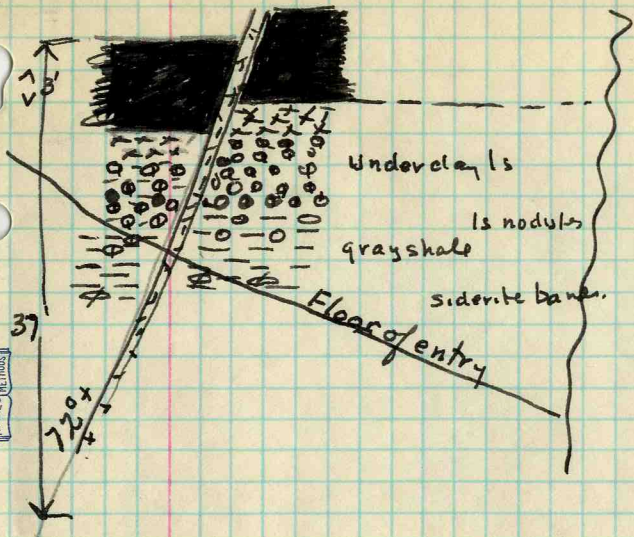
On W¹/₂E of N - 9' west fault crosses
entry NW SE - down stream ~~to~~ NE side

Coal dips away from fault on east side for
a short distance - until about 17 feet
below it all at fault on west side -
then lies horizontal for considerable distance

+ then
General dip of coal to East

Highest places in mine on main N
entry - ^{any} ~~the~~ grade of $2\frac{1}{2}\%$ between
face of Main N. + bottom - distance of $\frac{1}{2}$ mile

Calcite vein
3-4" - with petroleum



Fault - Consol. Coal Co.
Lake Creek Mine
Sept 4, 1947

Right rib.
looking south

Distance between faults - _____ feet

Coal raised on E. so where it meets
entry E. of East fault it's 37' above
position on W. side of W. fault

Gouge -
6-8' wide
Mainly shattered coal

Sept 7, 1947
Lake Creek Mine

