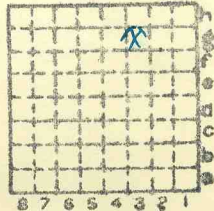


ISGS Index No. 4628

Peabody #2.

480



Sec. 11  
 T. 9 N.  
 R. 2 E.  
 Index No. W.





Mine originally operated by: (1) Peabody coal Co.

Date 1908

Original name or number: #2  
Illinois Coal Report p.

LATER OPERATORS

Date	Operator	Name or No.
2		
3		
4		
5		
6		
7		
8		
9		
10		
11		
12		
13		
14		

\* Also owners #See ownership sheet

Railroad, Wagon, Idle, Abandoned *About 1910*

SHIPPING MINE

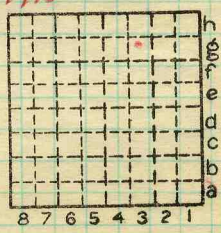
IDENTIFICATION

County No. 480

Coal No.  6

Quad. W. Frankfort

Part



Sec. 11  
 T. 9 N. S.  
 R. 2 E. W.  
 Index No.

County Williamson

8 7 6 5 4 3 2 1

0611 g3

COAL MINE OPERATOR



LOCATION AND ELEVATION

Location: side R. R.
side R. R.
side Highway No.

on top. map Location sheet

Elevation: Method, 1. Est. ( ) ft.
2. Inst. (kind H L. ) 497 ft.

By GHC Data sheet

DEPTH

Authority GHC. NB 79 p13 To coal ft.
Authority Rail to rail ft.
Top of coal above rail. (Est. Rule) ft.
To coal 84 ft.

ALTITUDE OF TOP OF COAL

By estimated data
By instrumental data 413 ft.

Thickness 108 in.

Max. in. Min. in. Aver. in.

GEOLOGICAL DATA

Mine notes, date 1908
Coop No. Pyr. inv. Coal Ash inv.

CHEMICAL DATA

Analyses Face U. I. B. M. Others
Car U. I. B. M. Others
Org. Sulf U. I. B. M. Others
Ash fusion U. I. B. M. Others
Ash anal. U. I. B. M. Others
U. I. B. M. Others

Classification

Misc. tests: Coking. Cleaning Boiler

Published descriptions:—

Railroad, ~~Wagon~~, ~~Idle~~, Abandoned

IDENTIFICATION

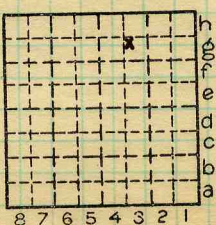
County No. 480

Coal No. 6



Part

Quad. W. Frankford
County Williamson



Sec. 11

T. 9 N. S.

R. 2 E. W.

Index No.

0611 G3

COAL MINE LOCATION AND DATA

Depth not correct