



Mine originally operated by: (1)

Date
1948?

Carmac Coal Co.

Original name or number: Carmac
Illinois Coal Report p.

LATER OPERATORS

Date	Operator	Name or No.
2 3/1/56	Carmac C. Co. (a wholly owned subsidiary of Dynshire Coll. Corp.)	Carmac
3		
4	Thunderbird Coll. Corp.	Carmac
5		
6		
7		
8		
9		
10		
11		
12		
13		
14	SW SW NE (1948)	

*Also owners

#See ownership sheet

Railroad, Wagon, Strip, Idle, Abandoned

Slope

IDENTIFICATION

Sept 64
5

County No. 1695

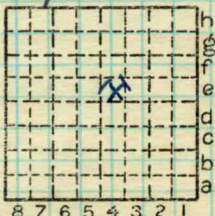
Coal No.

Coal Report No. S-94

Quad.

(1948)
4'0"

County Williamson



Sec. 36

T. 9 S.

R. 4 E.

Index No.

COAL MINE OPERATOR

Period				Tons	
Mo.	Day	Year	Mo.	Day	Year
		1948			122 516
		1949			208 101
		50			239 567
		51			372 879
		52			444 231
		53			342 738
		1954			348 795
		1955			296 791
		1956			261 987
		1957			316 158
		1958			242 148
		1959			216 081
		1960			213 679
		1961			177 644
		1962			387 950
		1963			323 717
		1964			196 465

SUMMARIES

No. to No.

Railroad, Wagon, Strip, Idle, Abandoned

IDENTIFICATION

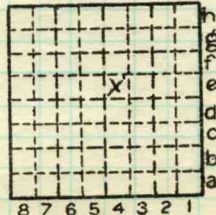
County No. 1695

Coal No.

Coal Report No. S-94

Quad.

County Williamson



Sec. 36

T. 9

R. 4

Index No.

COAL MINE—PRODUCTION

ILLINOIS GEOLOGICAL SURVEY, URBANA

ILLINOIS GEOLOGICAL SURVEY, URBANA

Carmac Coal Co., Carmac Mine

Sampled July 18, 1962 - Eadie & Gluskoter

Accompanied by K. Boyett, Mine Supt.

Mine generally has good top although development in Main West shows some slips and worse top than in other areas in East. Two conventional mining units loading from 700' rooms onto room belts. 3 belts and transfer points in Main West to get coal to slope. Roof bolts on about 7' centers in rooms. Production about 1800 Tons/day on two shifts. 7 Entry system.

Sample # 1: 1060'S, 3720'W, NE corner sec. 35, 9S - 4E

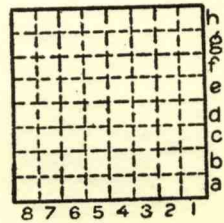
Sample # 2: 2460'S, 4000' W., NE corner sec. 35, 9S - 4E

Sample # 3: 2540' S., 3000'W., NE corner sec. 35, 9S - 4E

By GRE & HG Date 7-18-62

Quad Part

County Williamson



Sec. 36

T.	9	S.
R.	4	E.
		W.

Mine Sampled 18 Jul 62 by
G. Eadie & H. Gluskoter
accompanied by K. Boyett,
Mine Supt.

Mine generally has good top although development in Main West shows some slips and worse top than in other areas in East. Two conventional mining units loading from 700' rooms onto room belts. 3 belts and transfer points in Main West to get coal to slope. Roof bolts on about 7' centers in rooms. Production about 1800 Tons/day on two shifts, 7 entry system.

Sample Locations

#1 1060'S, 3720'W, NE Cor Sec 35
T 9 S, R 4 E

#2 2460'S, 4000'W, NE Cor Sec 35
T 9 S, R 4 E

#3 2540'S, 3000'W, NE Cor Sec 35
T 9 S, R 4 E

3rd P.M.

Supt. Kenneth Boyett
Ming. Engr. - George Hargraves
1961-177,644

P.O. Stanfort

Slope

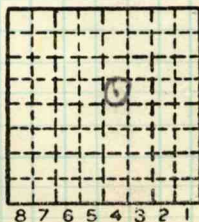
4' 0" coal

Carmac C.C.
#5 coal

By _____ Date _____

Quad _____ Part _____

County Williamson #1695



h Sec. 36

N.

T. 9 S.

4 E.

R.

W.

Index No.

594

ILLINOIS GEOLOGICAL SURVEY, URBANA

Carmac Coal Company, Carmac Mine

No. 5 Coal

Mr. Kenneth Boyett, Superintendent, R. R. 2,
Stonefort, Illinois

Sample # 1

18 key room, 350' from C 1 entry, 6 N main W..
1060'S and 3720'W of NE cor. Sec. 35, T. 9S., R.
4E., 3rd pm.
Black shale roof.

50" of coal - pyrite in roof shale, good top (No. 5
Coal) Top

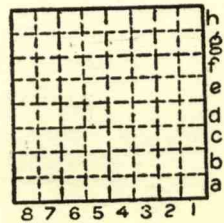
DETAILED DESCRIPTION OF COAL

1 1/2"	Clarain, normally bright banded.	1 1/2"
1/16"	Pyrite, horizontal layer	1 9/16"
1 15/16"	Clarain, normally bright banded	3 1/2"
1/8"	Fusain, mineralized	3 5/8"
1'9 7/8"	Clarain, calcite in vertical cleats with 1/32" mineral fusain bands. Exceptionally well banded clarain and fusain.	2'1 1/2"
1/4"	Fusain, mineralized with pyrite	2'1 3/4"
1 1/4"	Clarain, normally bright banded	2'3"
1/8"	Fusain, soft, mineralized	2'3 1/8"
1'10 7/8"	Clarain, calcite in vertical cleats; normally bright banded, some pyrite in vertical cleats.	4'2"
	Underclay bottom	

By / GRE & HG Date 7/18/62

Quad..... Part.....

County Williamson



Sec. 35

T.	N.
9	S.
R.	E.
	4
	W.

stypes
SAMPLE #1

July 18, 1962

CARMAC MINE No. 5 coal

Mr. Kenneth Boyett, Superintendent
Rt 2. Stonefort, Ill.

Collected by G. Eadie
H. Gluskoter

18 Key room, 350' from C1 entry, 6N
main W.

1060' S + 3720' W of NE cor. Sec 35,
T. 9S., R. 4E, 3rd PM

Black shale roof.

50" of coal - pyrite in roof shale,
good top. (No. 5 coal)

Top -

Williamson Co.

Mr. Kenneth Boyett
 Carmac Coal Mine
 Stamford, RT 2.

18 Jul 62
 Carmac Coal Co.
 Kenneth Boyett - Supt.

Sample #1 No 5 coal
 collected by Eddie +
 Gluskoter
 7/18/62

18 Key room, 370' from C1 Entry, 6 N.

Main w.
 1060'S + 3720'W of NE cor
 Sec 35, T9S, R4E, 3rd PM

Black Shale Roof. 50" of
 coal fuel seam
 pyrite in roof shale -
 good top

thickness

from top down

1 1/2"	claym. NBB,	- 1 1/2
1/16"	pyrite - horiz. layer.	1 9/16
1 15/16"	claym NBB	- 3 1/2
1/8"	fusain, mineralized	- 3 5/8
1' 9 7/8"	claym, calcite in part cleats w/ 1/32" mineral fusain bands. Externally well banded claym + fusain.	2 1/2

Carmac

Spl #1

18 Jul 62

$\frac{1}{4}$ " fusain, mineralized w/ pyrite $2' \frac{1}{2}" - 2' - 1' \frac{3}{4}"$

$1' \frac{1}{4}"$ charcoal, NBB $2' 3"$

$\frac{1}{8}"$ fusain, soft, mineralized. $2' 3\frac{1}{8}"$

charcoal, calcite in vert.

$1' 10\frac{7}{8}"$ cleats, NBB, some pyrite in vert; cleats $4' 2"$

Underlay bottom -

ILLINOIS GEOLOGICAL SURVEY, URBANA

Carmac Coal Company

No. 5 Coal

Sample # 2

Main W. No. 1 main entry, 1000' W of 6 N. entry.
2460'S and 4000'W, NE cor., Sec. 35, T. 9 S., R. 4 E.,
3rd P M.

49½ inches of No. 5 Coal. Top

DETAILED

DESCRIPTION OF COAL

Begin at top

From top down

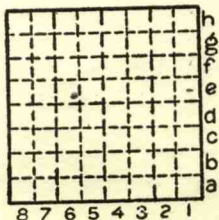
49½ inches of # 5 Coal

- 0 - Shale roof, contact zone with coal contains pyrite and shale nodules.
- 0'-3½" Clarain, normally bright banded, thin calcite veinlets in vertical cleats.
- 0'-5½" Mineralized Fusain and Clarain, irregular, lenses ½".
- 1'-13/4" Clarain, normally bright banded, calcite in vertical cleats, few thin pyrite bands.
- 1'-2½" Fusain mineralized with vitrain bands.
- 2'-4" Clarain, normally bright banded, some thin soft fusain bands.
- 2'-5" Clarain with thin soft fusain bands up to 1/8".
- 2'-8½" Clarain, normally bright banded, calcite and pyrite in cleats, pyrite bands up to 1/16".
- 4'-1½" Clarain, with banded, pyrite bands up to 1/16", pyrite and calcite in cleats.

By.....GE-HG.....Date.....7/18/62

Quad.....Part.....

County.....Williamson.....



Sec. 35

T. 9	N.
	S.
R. 4	E.
	W.

Sample #2

July 18, 1962

CARMAC MINE

Main W. No. 1 main entry, 1000' west
6 N. entry,

2460'S + 4000'W, NE cor. Sec 35,
T. 9 S., R. 4 E., 3rd PM

4 1/2 inches of No. 5 coal. collected by G. Endie
H. Gluskoter

top

18 Jul 62

~~Carmac Mine~~

SAMPLE #2

collected by
Eadie + Glushko

Main West No. 1 main entry
1000' W of G N entry

2460'S + 4000'W NE Cor.

Sec 38, T9S, R4E, 3rd Pm

Begin at top.

From top down

49 1/2" of #5 Coal

- 0- Sh. roof, contact zone ^{with coal} contains pyrite & sh. nodules
- 0'-3 1/2" Clarain NBB, thin calcite veinlets in vert. cleats
- 0'-5 1/2" ^{mineralized} Fusain + Clarain, irreg. lenses, _{to 1/4"}
- 1'-1 3/4" Clarain NBB, Calcite in vert cleats, few thin pyrite bands
- 1'-2 1/2" Fusain mineralized with vitrain bands
- 2'-4" Clarain, NBB, some thin soft fusain bands
- 2'-5" Clarain w/ thin ^{soft} fusain bands up to 1/8"

Cormac
Sp. #2
18 July 62

2'-8 1/2" Clarain, N.B.B., Calcite & Pyrite
in cleats, pyrite bands up
to 1/16"

4'-1 1/2" Clarain, W banded, pyrite bands
up to 1/16", Pyrite + Calcite
in cleats



ILLINOIS GEOLOGICAL SURVEY, URBANA

Carmac Coal Company

Sample # 3

150' in off C 1 entry # 1 room

8th S. off main W.

2540'S and 3000'W of NE cor. Sec. 35, T. 9 S., R. 4 E.,
3rd P M.

50" of No. 5 Coal

Top

DETAILED DESCRIPTION OF COAL

Dark gray shale roof

50" total thickness of coal uneven
contact between shale and coal.

5½" Clarain with vitrain bands about 1/16",
calcite in cleavage 0-5½"

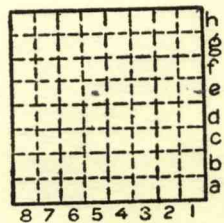
5/8" Fusain mineral with some pyrite in
pods 5½"-6 1/8"

3' 7 7/8" Clarain - normally bright banded -
with soft fusain streaks close to
bottom, calcite abundant in
cleats, occasional pyrite nodules
(removed pyrite nodule. 1½ x 3 3/4)
0'6 1/8" -
4'2"

By GE-HG Date 7/18/62

Quad Part

County WILLIAMSON



Sec. 35

T. 9	N. S.
R. 4	E. W.

Sample # 3

7/18/62

Carmac Mine

150' in off C1 entry #1 room

8th S. off main w.

2540'S + 3000'W of NE cor. Sec 35

T.9S., R.4E., 3rd pm.

50" of ~~no.~~ 5 coal

collected by G. Edie
H. Gluskoter

Top

Carnac Mine SAMPLE #3

~~X/18/62 Eagle + Gluskotey~~~~150' in off of C1 entry~~~~#1 room 8th S off Main W.~~~~2540's + 3000' W of NE cor~~~~Sec 35, T9S, R4E, 3rd P.M.~~

Dark gray shale roof

50" total thickness of coal
uneven contact between shale + coalClarin with v. thin bands about
5 1/2" 1/16", Calcite in cleavage 0-5 1/2"5/8" Fusain mineral w/ some pyrite
in pods - 5 1/2" - 6 1/8"3' 7/8" Clarin - NBB - w/ soft fusain
streaks closer to bottom, calcite
abundant in cleats, occas. pyrite nodules
pyrite nodule 1/4 x 3 3/4
Removed → 0' 6 1/8" - 4' 2"