



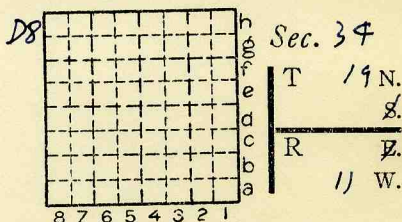
Location and Elevation Data

Location: Exact Approximate
 (Approximate only if no trace of record of original exists)
 Location by G.M.W.
 Date 1945 Notebook No. 658 Page 25-294
 Looseleaf ref. _____
 Map files No. 14-92-36

Description of Location

Position in sec., 1/4 sec., 40 acres

_____ feet from North line
 _____ feet from East line
2200 feet from South line
510 feet from West line



Other description: _____

#6 5'8" (Bottom concealed)
At least 6'0" of coal
(563)

Farm _____

No. _____

Company (Abd. Drift mine)

No. _____

County No. 6.05 (2)

19 tabulations

Elevation 562.5 ft.

By G.M.W.

Method: Level, transit, alidade, hand level

Elevation of Top of coal

Height of point above ground _____

Date _____ Notebook _____ P. _____

Looseleaf ref. _____

Map files No. _____

Description of item: (drill hole, mine, etc.) Drift mine Abandoned

County Vermilion Quadrangle Danville Index No. 1734 D8