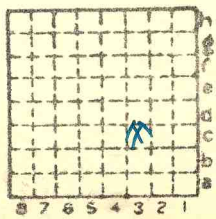


Wasson CC #2

S 11

608

75615
mi. #130



Sec. 33

T.	9	N.
		S.
R.	5	E.
		W.

Index No.



Mine originally operated by: (1)

Date **Wasson Coal Co.**

1913

Original name or number: **#2 A**
Illinois Coal Report **1913** p.

LATER OPERATORS

Date	Operator	Name or No.
2		
3		
4		
5		
6		
7		
8		
9		
10		
11		
12		
13		
14		

Had Apr. 1942

* Also owners #See ownership sheet

Railroad, Wagon, Idle, Abandoned **Slope**

C.C.C. & St. L. *1942*

IDENTIFICATION

County No. **608**

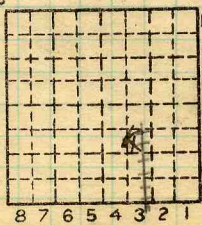
Coal No. **5**



Part

Quad. **Harrisburg**

County **Saline**



Sec. **33**

T. **9** S.

R. **5** E.

Index No.

0933 03

COAL MINE OPERATOR



No.	Period						Tons	
	Mo.	Day	Year	Mo.	Day	Year		
						1935		
11	1	1	1936	12	31	1936	173	437
11	1	1	1937	12	31	1937	157	421
						1939	121	781
						1940	73	464
11	1	1	1941	12	31	1941	118	195
S-11	1	1	1942	23	31	1942	26	599

#9

2369, 939
2097 010
252929

Abd. Apr. 1942

SUMMARIES

No.	to	No.		
1913		1935	2176	502
			2349	939

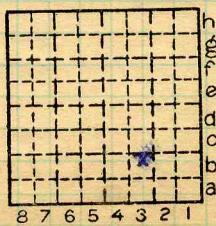
Abd 1942 ? April

Railroad, Wagon, Idle, Abandoned Slope

IDENTIFICATION

S-11

County No. 608 Coal No. 5
Harrisburg
Quad. Part
County Saline



Sec. 33

T. 9 S.
R. 5 E.

Index No. 0933 X3
C



LOCATION AND ELEVATION

Location: side side side Highway No. R. R. R. R.

on top. map Location sheet

Elevation: Method, 1. Est. () ft. 2. Inst. (kind Plane Table) 401 ft.

By Company Data sheet

DEPTH

Authority To coal 37 ft. Authority Rail to rail ft. Top of coal above rail. (Est. Rule) ft. To coal 50 ft.

ALTITUDE OF TOP OF COAL

By estimated data ft. By instrumental data 364 ft.

Thickness

Max. in. Min. in. Aver. 58 in. 56

GEOLOGICAL DATA

Mine notes, date 1921

Coop No. Pyr. inv. Coal Ash inv.

CHEMICAL DATA

Analyses Face U. I. 3 B. M. Others Car U. I. B. M. Others Org. Sulf U. I. B. M. Others Ash fusion U. I. B. M. Others Ash anal. U. I. B. M. Others U. I. E. M. Others

#130 Classification R.I. 137 U.C.I. 148

Misc. tests: Coking. Cleaning Boiler

Published descriptions: 120 S } NE on SWSE 530 W } 1939 C3

Railroad, Wagon, Idle, Abandoned Slope

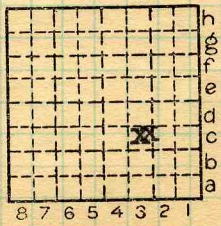
1200' from S line 1850 from E line IDENTIFICATION

County No. 608 Coal No. 5

S-11

Quad. Harrisburg County Saline

Part



Sec. 33

T. 9 N R. 5 E W.

Index No. 0933 c3

COAL MINE LOCATION AND DATA

Town, **Carriers Mills**

Local Authority,

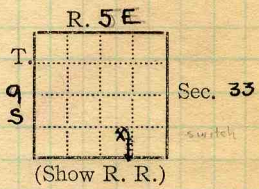
Level: Auth.,

Method,

R. R., **C.C.C. + St. L.**

Location: authority, **Ans. letter May 4 '16.**

Surface alt., ft.
 Depth to coal, ft.
 Alt. top coal, ft.
 Thickness: Av. in.
 Max. in., Min. in.



Operator

Mine Name or No.

1915 **Wasson Coal Co**
Harriburg.

No. 2

Successor to
 Date
 Succeeded by
 Date
 Succeeded by
 Date

Q

PRODUCTION.

		Fiscal	U. S. No.
1915		33 418	
26	<i>Daily cap + #1 =</i>	<i>4300 Tons.</i>	
27	<i>109-647</i>		
1928			
1931	<i>44 150</i>		
1932	<i>'8 827</i>		
		<i>22</i>	<i>1930 #16</i>

Geol. Notes? *Yes* Coop. No.

Coal sec.? *No.*

Analyses No. *129 14-5-6*

21 23

COUNTY

Examined by

Ref.

Coal bed name: Local

Survey No. *5*

County **Saline**

Index No. **0933.62**

K.—ACTIVE SHIPPING OR LOCAL COAL MINE. *X*

- F. Thickness of rock above bed worked, *25' ± at shaft*
 (1) Important variations, *Depth to coal in the N. reported to be 157' (from drill log) Soil thickness unknown.* See
 G. Note presence of strata having important effect on mining,

- Gray shale above coal makes excellent roof* See
 (1) Position, *Above coal*
 (2) Character,
 (3) Persistence,
 (4) Other workable coal beds, *No information* See

H. Cap rock, *None*

- (1) Thickness,
 (2) Height above coal,

See

I. Immediate roof, *Gray shale*

- (1) Thickness, *25'4"* (2) Contact with coal,

- (3) Horizontal variation, *Character practically the same thruout.* See

J. Draw slate. (1) Thickness, (2) Contacts

- (3) Persistence, *0-3" Clean & regular Most in the east, a little in the west.*

K. Coal bed: Max. *62* Min. *56* Av. *58* inches

- (1) Benches, *None*
 (a) Position,

(b) Persistence,

See

- (2) Bedded impurities, kind, position in benches, persistence, ease of separation.

Charcoal

See

- (3) Irregularities in continuity of bed (due to deposition, erosion, or movement), *None*

See

(a) Effect on mining,

See

SECTION				
Ft.	in.	Name		Sym.
12		Till		
25		Shale		
4	10	Coal		
4		Flourclay		
<i>Section at shaft.</i>				
		<i>12 in = 4'</i>		

Collector, *Netzaband*
 Mine, *Wasson #2* Co. *Saline*
 M.—UNDERGROUND SHEET (Geol.)

Coal: Survey No. *5*
 Index No. *0933.62*

K. (5) Physical character of coal in benches,

(a) Relative hardness, *Harder than Wm'son Co. coal.*(b) Lustre, *Bright to glance, bright predominating*(c) Fracture, *Blocky*(d) Texture, *Laminated*

See

(6) Impurities in coal, other than bedded,

(a) Kind, *Pyrite lenses up to 1"*(b) Position and persistence, *In top coal*(c) Rejected, *Large lenses* Ease of separation,

See

L. Floor: (1) Material, *Floor clay LS. below.*(2) Thickness, *4'*

(3) Variation,

(4) Note character, condition, tendency to heave, relation to undercutting commercial value.

Dark gray shale, many slickensides, some well preserved sigillaria remains; heaves only when water stands over it, used to undercut upon, sample taken but Mr. Koster does not know the results.

See

(5) Clay sample No.

Location,

M. Stratigraphy,

(1) Fossiliferous horizons underground, *Grey shale above coal-fragments of plant remains, also floor clay.*

Collection No.

Location,

N. Notes on effect of deep drilling in coal mine areas.

See

Collector, *Natzaband*Coal: Survey No. *5* Mine, *Wasson #2* Co. *Saline*Index No. *0933.62*

Operator, *Wasson Coal Co.* Date *July 12, 1921*
 Mine, *No 2.* Sec. *33* T. *9S* R. *5E*
 Located, *1 1/2* miles from *Carrier Mills*
 Location in mine, *Face of the 114 E. off the Main N.*

GRAPHIC SECTION		DESCRIPTION OF SECTION (AT POINT SAMPLED)		
In.	No.	No.	(Note character and thickness of roof)	Inches
			<i>Shale Roof</i>	
<i>12</i>	<i>1</i>	<i>1.</i>	<i>Coal</i>	<i>12</i>
<i>1/4</i>	<i>2</i>	<i>2.</i>	<i>Charcoal</i>	<i>1/4</i>
<i>7 1/4</i>	<i>3</i>	<i>3.</i>	<i>Coal</i>	<i>7 1/4</i>
<i>1/4</i>	<i>4</i>	<i>4.</i>	<i>Charcoal</i>	<i>1/4</i>
		<i>5.</i>	<i>Coal</i>	<i>31</i>
		<i>6.</i>	<i>Pyrite lens</i>	<i>1/8</i>
		<i>7.</i>	<i>Coal</i>	<i>5 1/2</i>
<i>31</i>	<i>5</i>			<i>56 3/8</i>
			<i>Trace 57</i>	
<i>1/2</i>	<i>6</i>			
<i>5 1/2</i>	<i>7</i>			
(Note character and thickness of floor)				
Total thickness of coal.				
Condition, <i>As Mined</i>		Time,	hr.	min.
Wt. Gross, <i>20</i> lbs.		Net,	lbs.	
What Nos. shipped by Co.?				
Excluded from sample: No. <i>None</i>				
Sample represents <i>57</i> in. tons.				
Impurities? How do they occur?				

Sample No. *1* Can No. *N-21-54* Lab. No. *12914*
 Collector, *Wilson* Coal: Survey No. *5*
 Mine, *Wasson #2* Co. *Saline* Index No. *0933-62*

Operator, *Wasson Coal Co.*

Date *July 12, 1921*

Mine, *No. 2.*

Sec. *33* T. *98* R. *5E*

Located, *1 1/2* miles from *Carrier Mills*

Location in mine, *Face of the 5th F. off the Main N.*

GRAPHIC SECTION		DESCRIPTION OF SECTION (AT POINT SAMPLED)		
In.	No.	No.	(Note character and thickness of roof)	Inches
<i>10 1/4</i>	<i>1</i>		<i>Shale Roof</i>	
<i>1/4</i>	<i>2</i>	<i>1. Coal</i>	<i>Charcoal</i>	<i>10 1/4</i>
		<i>2. Coal</i>		<i>1/4</i>
		<i>3. Coal</i>		<i>43 1/2</i>
			<i>Tape 54</i>	
<i>54</i>	<i>3</i>			
(Note character and thickness of floor)				
Total thickness of coal.				
Condition, <i>As Mined</i>		Time,	hr.	min.
Wt. Gross, <i>18</i> lbs.		Net,	lbs.	
What Nos. shipped by Co.?				
Excluded from sample: No. <i>None</i>				
Sample represents <i>54</i> in. tons.				
Impurities? How do they occur?				

Sample No. *2*

Can No. *W-21-55*

Lab. No. *12915*

Collector, *Wilson*

Coal: Survey No. *5*

Mine, *Wasson #2*

Co. *Saline*

Index No. *0933.62*

Operator, *Wasson Coal Co.*

Date *July 12, 1921*

Mine, *No. 2.*

Sec. *33* T. *9S* R. *5E*

Located, *1 1/2* miles from *Carrier Mills*

Location in mine, *Room 2A off the 11th W. off the Main W.*

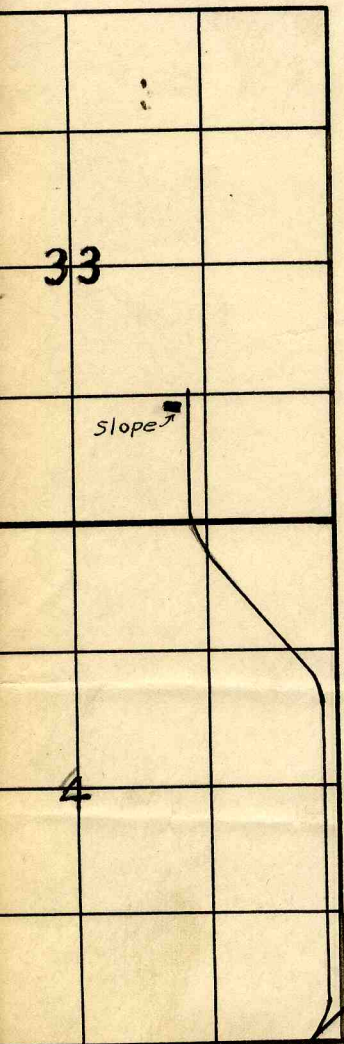
GRAPHIC SECTION		DESCRIPTION OF SECTION (AT POINT SAMPLED)		
In.	No.	No.	(Note character and thickness of roof)	Inches
			<i>Shale Roof</i>	
<i>7</i>	<i>1</i>			
<i>1/4</i>	<i>2</i>	<i>1</i>	<i>Coal</i>	<i>7</i>
		<i>2</i>	<i>Pyrite</i>	<i>1/4</i>
		<i>3</i>	<i>Coal</i>	<i>47 1/2</i>
		<i>4</i>		<i>54 3/4</i>
		<i>5</i>	<i>Tape</i>	<i>54 1/2</i>
<i>47 1/2</i>	<i>3</i>		<i>Floor clay</i>	
			(Note character and thickness of floor)	
			Total thickness of coal.	
		Condition, <i>As Mined</i>	Time, hr. min.	
		Wt. Gross, <i>18</i> lbs.	Net, lbs.	
		What Nos. shipped by Co.?		
		Excluded from sample: No. <i>None</i>		
		Sample represents <i>54 1/2</i> in. tons.		
		Impurities? How do they occur?		

Sample No. *4* Can No. *W-21-56* Lab. No. *12916*

Collector, *Wilson* Coal: Survey No. *5*

Mine, *Wasson #2* Co. *Saline* Index No. *0933.62*

T 9 S.
R 5 East



WASSON COAL CO. MINE 2

Big Four