

In 1966 this mine loaded from
same tipple as "Utility strip."

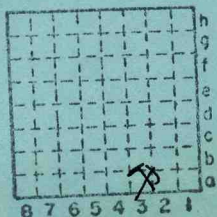
Abandoned 8/68

Peabody C.C. "Utility Highwall"

Portal location in Sec. 11-9S-3E

ISGS Mine
#3669

S-104



Sec. 4
T. 9 N.
R. 3 E.
Index No. ~~W~~

Williamson Co.

A4

Mine originally operated by: (1) *Peabody c.c.*

Date 9/65

Original name or number: *"Utility Highway"*
Illinois Coal Report *1965* p. *42*

LATER OPERATORS

Date	Operator	Name or No.
2		
3		
4		
5		
6		
7		
8		
9		
10		
11		
12		
13		
14		

*Also owners

#See ownership sheet

Railroad, Wagon, Strip, Idle, Abandoned

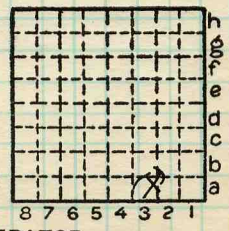
IDENTIFICATION

County No. _____
Coal Report No. 5-10A

8/68

Coal No. 6

Quad. _____
County Williamson Co.



Sec. 4

T. 9 ^{N.}_{S.}

R. 3 ^{E.}_{W.}

Index. No.

COAL MINE OPERATOR



