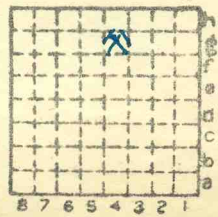


CW&F "B"

423



Sec. 17
 T. 8 N.
 S.
 R. 2 E.
 W.
 Index No.

MI 156



Mine originally operated by: (1)

Chicago & Carterville Coal Company

Date

1907

Original name or number: "B"
Illinois Coal Report 1907 p.

LATER OPERATORS

Date

Operator

Name or No.

2

1918

Chicago, Wilmington, & Franklin Coal Co. "B"

3

4

5

6

7

8

9

10

11

12

13

14

* Also owners

#See ownership sheet

Railroad, Wagon, Idle, Abandoned 1913

I.C. C.B.&Q.R.R.

IDENTIFICATION

SHIPPING MINE

County No. 423

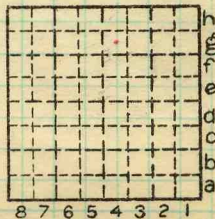
Coal No. 6



Part

Quad. Herrin

County Williamson



Sec. 17

T. 8 N. S.

R. 2 E.

Index No.

0317 g4

COAL MINE OPERATOR



(Sheets)

COAL PRODUCTION

(Sheet)

Period						Tons			
Mo.	Day	Year	Mo.	Day	Year				

Abd. 1923

SUMMARIES

No. to No.

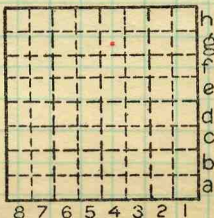
Railroad, Wagon, Idle, Abandoned IDENTIFICATION

County No. **423** Coal No.

Quad. **Herrin** Part

County

Williamson



Sec. **17**

T. **8** S. **4**
R. **W** E.

Index No.

0317 g4



LOCATION AND ELEVATION

Location: side R. R.
side R. R.
side Highway No.

on top. map Location sheet

Elevation: Method, 1. Est. () ft.
2. Inst. (kind Company Level) 384 ft.

By Data sheet

DEPTH

Authority To coal ft.

Authority Rail to rail ft.

Top of coal above rail. (Est. Rule) ft.

To coal 248 ft.

ALTITUDE OF TOP OF COAL

By estimated data

By instrumental data

136 ft.

Thickness

Max. in. Min. in. Aver. 108 in.

GEOLOGICAL DATA

Mine notes, date

Coop No. Pyr. inv. Coal Ash inv.

CHEMICAL DATA

Table with 4 columns: Analyses Face, U. I., B. M., Others. Rows include Car, Org. Sulf, Ash fusion, Ash anal.

Classification

Misc. tests: Coking. Cleaning Boiler

Published descriptions:—

Railroad, Wagon, Idle, Abandoned

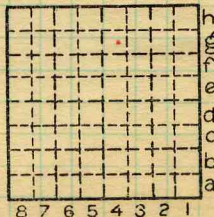
IDENTIFICATION

County No. 423

Coal No. 6

Part

Quad. Herrin
County Williamson



Sec. 37

T. 8 S.

R. 2 E.

Index No.

0317 g4

COAL MINE LOCATION AND DATA



Town, *Herrin*

Local Authority,

Surface alt., *390* ft.

Depth to coal, *241* ft.

Alt. top coal, *149* ft.

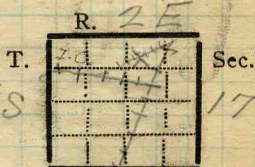
Thickness: Av. *120* in.

Max. *132* in., Min. *84* in.

Level: Auth.,

Method, *Topog. map*

R. R., *I.C. & C.B. & Q.*



Location: authority, *Mine Map*

(Show R. R.)

Operator

Mine Name or No.

19 *21* *C.W. & F. Mining Co.*

Herrin Mine B

Successor to

Date

Succeeded by

Date

Succeeded by

Date

PRODUCTION.

							U. S. No.
19	<i>1800 tons per day.</i>						
							<i>Dup</i>

Geol. Notes? *Yes* Coop. No.

Coal secs? *5*

Analyses No. *12822-34; 12841-2*

Examined by *Wilson*

Ref.

Coal bed name: Local

Survey No. *6*

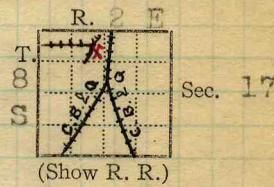
County *Williamson*

Index No. *031757*

***K.-ACTIVE SHIPPING OR LOCAL COAL MINE.** *duplicate*

Town, Herrin
Local Authority, Co. { 381.0 ✓ Surface alt., 304 ft.
237 ✓ Depth to coal, 218 (220) ft.
144.0 ✓ Alt. top coal, 136 ft.
Level: Auth., Savage; NB102-p12 110" Thickness: Av. 120 in.
Chi. W & F. C. Co. Mines Max. 132 in., Min. 84 in.
Method, HI

R. R., J.C. - C.B. & Q.



Location: authority, Savage; Folio Letter from Chi. W. & F. C. Co.

Operator Mine Name or No.
GEN'L COAL REPT #423

19 07 Chicago & Cartersville C. Co "B"

Successor to
Date

Succeeded by **Ch W & F Mining Co. Coal Co. "B"**
Date **Apr '18**
Succeeded by **18 Chic. Wilmington & Franklin Coal Co. (operating mgrs.)**
Date **332 So. Michigan, Chicago**

PRODUCTION.

		Fiscal			U. S. No.
19 15	2000 T cop.	9	413	911	
1925-26	Idle (Dept. of mines)				
1927	0				
1928	Idle				

Geol. Notes? No Coop. No. Coal secs.? No

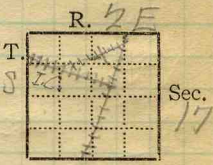
Analyses No. US

Examined by Ref.

Coal bed name: Local Survey No. 6
County Williamson Index No. 0317

K. ~~AGENTS~~ SHIPPING OR LOCAL COAL MINE. *valid since 1923*

Mine Name or No., *Mine B. Williamson Co.*
1 mile *N* from *Herrin*.
 Operator, 19*11* *C.W. & F. Mining Co. 88*



Operator, 191

Entrance, *Shaft* Elev., *390* ft. $\left. \begin{array}{l} \text{above,} \\ \text{below,} \end{array} \right\}$ *Sea Level*
 Depth to ~~bottom~~ coal, *241* ft. Alt. *149*

SURFACE DATA.

- A. Topography, *Rolling; Swampy in places* See
 B. Surficial materials. (1) Character, *Till*
 (2) Thickness, *No information* (3) Effect on mining and shaft-sinking, of former drainage lines, underground water strata, etc. *No information*

- C. Outcrops, (1) Character, See
 (2) Structure, See
 (3) Fossil horizons, See
 Collection No.,
 (4) Evidences of subsidence, See

D. Note collection of mine maps, drill records and shaft logs.

For Elev. See L. C. Johnson, Herrin.
For Log, See Supt.

See drill record sheet,

E. Notes on surrounding area,

See

Coal bed name: Local, Survey No. *6*
 Collector, *Wilson*
 Mine, *Herrin B* Co. *Williamson* Index No. *0317-57*
 L.—SURFACE SHEET (Geol.)

K. (5) Physical character of coal in benches,

(a) Relative hardness, *All seam is comparatively hard; bottom coal is slightly brittle.*

(b) Lustre,

(c) Fracture, *Cleat*

(d) Texture, *Very compactly bedded* See *X 2*

(6) Impurities in coal, other than bedded,

(a) Kind, *FeS₂ stringers.*

(b) Position and persistence, *Near center of seam.*

In N.E.

(c) Rejected, Ease of separation,

See

L. Floor: (1) Material, *Floor clay*

(2) Thickness, *10" - 3'?*

(3) Variation,

(4) Note character, condition, tendency to heave, relation to undercutting commercial value.

Mine has very little water; clay heaves but little.

See

(5) Clay sample No. Location,

M. Stratigraphy,

(1) Fossiliferous horizons underground,

The roof shale contains many plant fragments and some brachiopods.

Collection No. Location,

N. Notes on effect of deep drilling in coal mine areas.

See

Collector, *Wilson*

Mine, *Herrin B*

Co. *Williamson*

Coal: Survey No.

Index No. *0317.57*

K3 "Roll": Location; In Main E about 1000' from bottom.

Small fault causes coal to drop down 3' on W. side and it dips on the W. toward this slip for 120'. The dip is irregular. 8' to the E of this slip is another small slip with about the same displacement in the same direction. Trend of 1st fault S28E; Dip 20° SW.

The roof here is a "soapstone" or soft white shale which is quite massive and irregularly bedded.

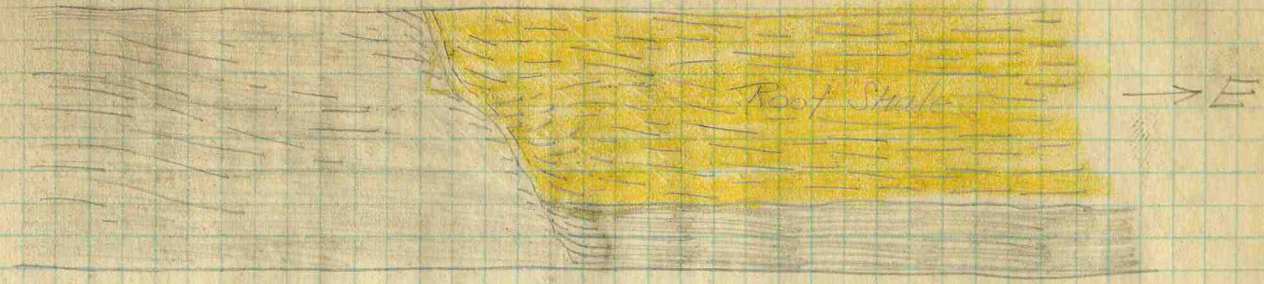
K₃ Fault in Main E ^{200' face} 200' from bottom trend N-W - S-E. This is a V shaped block fault apparently the result of tension. Dip of W. leg of V is 32° to the E; Dip of E leg of V is 51° to the W.

The roof here is of soft white shale or "soapstone", massive or irregularly bedded. It contains many plant fragments. Cleat especially well developed in upper coal. Roof shape over coal at fault is highly shattered.

The coal and apparently the overlying shale dip toward the slip at a variable angle, max. 6° for 30' where they flatten and dip W. with fair regularity at about 7° in a general "roll" with the trough about 35 yds. distant. East of the fault the coal dips westward, max. angle 10° at 20' from slip but is essentially flat at the fracture. In the next 40' the dip

K₅ Cleat: Well developed in upper coal N55°E; Minor jointing runs N42°W.

is reversed and then flattens out



Fault ' from bottom. Trend $S28^{\circ}E$. Dip $65^{\circ}E$
 Coal & Shale well shattered at and near fault plane.



200' N of Shaft is a fault with a displacement of 21'.
 Its trend is $S28^{\circ}E$ and its dip is 52° to the N.E.
 On the SW, the upthrown side, is exposed clay below
 the coal, then about 3' of lime, and then shale.

(36713-500-7-20)

INDEX

FOODS
 PHOTOGRAPH
 METHODS

Index No. 0317-57
 County Willamette

EXTRA NO. 3

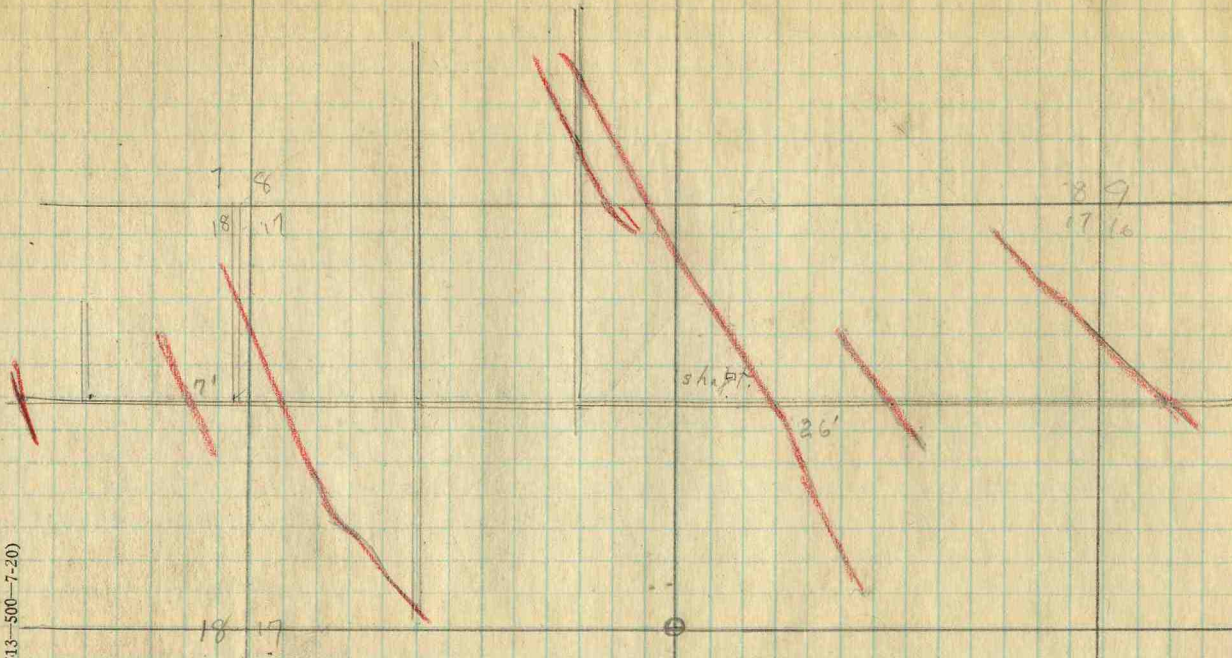
Collector Wilson
 X-3

K₃ Fault in air course for Main W. 20' from
 face. Trend N 28° E; Dip 64° NE
 This fault in Main W. ^{200 ft from}
 trends S 30° E and dips 45° to NE

1st. fault in 4th NW. (Fair Course)
 Trend S 28° E; Dip 52° to NE.
 N.E. side downthrown 5' (Approx)
 Coal dips away from fault on
 N.E. side.

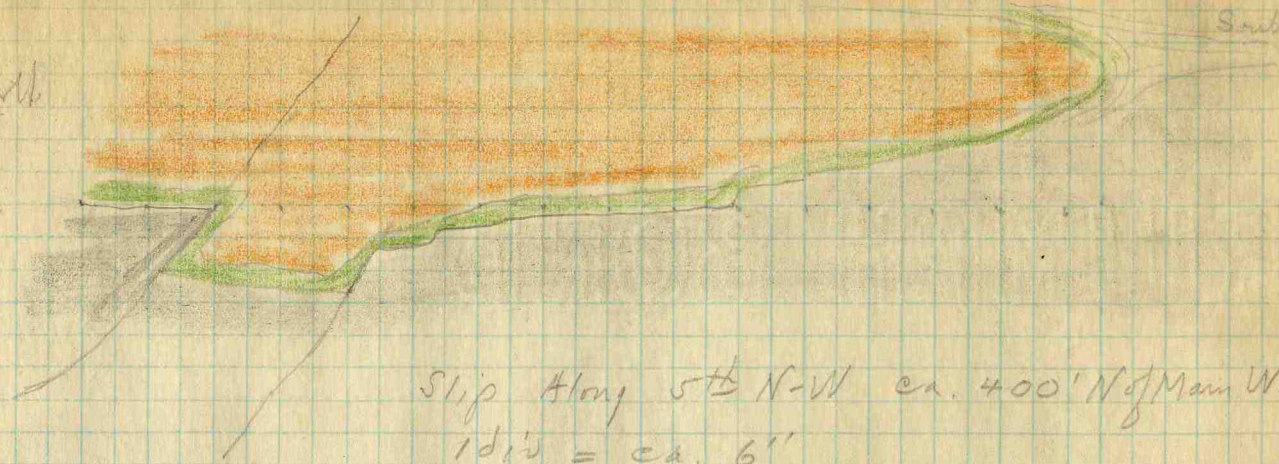
2nd fault on 4th NW. (Fair Course)
 Trend S 45° E; Dip 54° to N.E.
 S.W. side downthrown 10' 3"

50' in No 10 Room on 4th NW; fault
 trends S 20° E. Come down in
 3 steps. Downthrown on N.E.

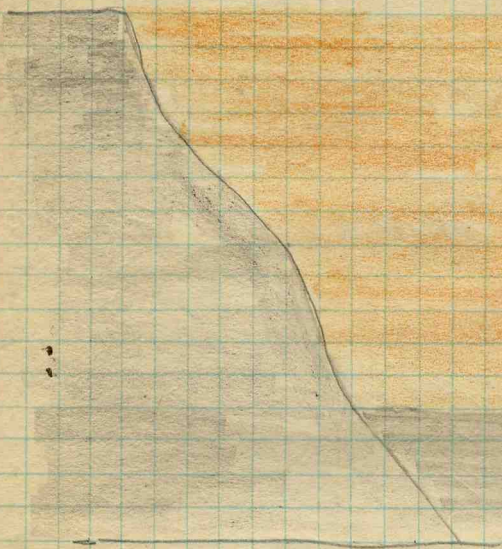


Plan of Herrin "B" Mine, Chi. Wilm. & Franklin
 Red lines indicate faults -

North



Slip Along 5th N-W ca. 400' N of Main W.
 1 div = ca. 6"



On Main west entry about 700 feet
from Face — — feet from shaft.

Collector *Culver*

X- 7

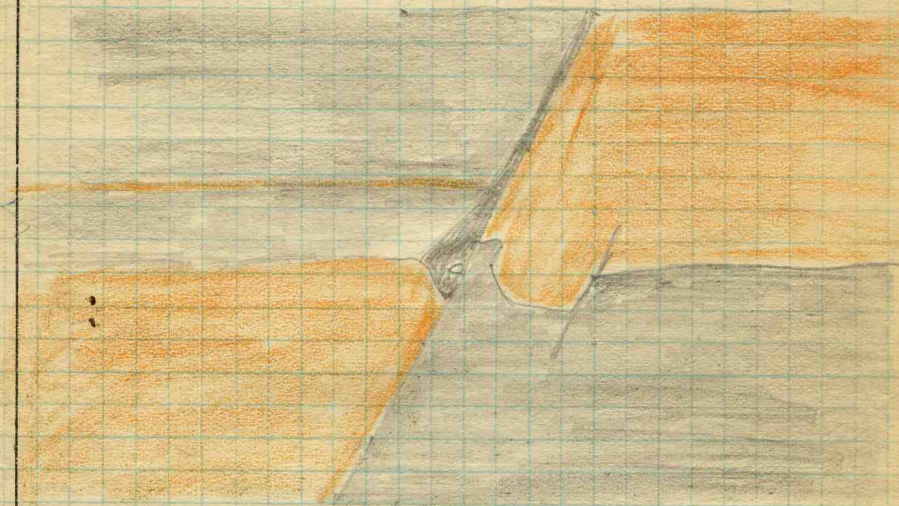
EXTRA NO. 7

Index No.

0317.57

County

Williamson



South wall of Main West.

Fault trends $S28^{\circ}E$ dip $62^{\circ}NE$
S.W. side down. ca 10'

Operator, *Chicago, Wilmington & Franklin* Date *June 28, 1921*
 Mine, *Herrin B.* Sec. *17* T. *85* R. *2E.*
 Located, *2 NE* miles from *Herrin*
 Location in mine, *Face 11° N off Main East*

GRAPHIC SECTION		DESCRIPTION OF SECTION (AT POINT SAMPLED)		
In.	No.	No.	(Note character and thickness of roof)	Inches
			<i>Shale roof</i>	
		<i>1</i>	<i>Coal roof 24" App</i>	
		<i>2</i>	<i>Coal</i>	<i>19</i>
		<i>3</i>	<i>Charcoal</i>	<i>7</i>
		<i>4</i>	<i>Coal</i>	<i>9</i>
		<i>5</i>	<i>Charcoal</i>	<i>8</i>
		<i>6</i>	<i>Coal</i>	<i>13</i>
		<i>7</i>	<i>Charcoal</i>	<i>8-1/2</i>
		<i>8</i>	<i>Coal</i>	<i>13</i>
		<i>9</i>	<i>BB shale</i>	<i>12</i>
		<i>10</i>	<i>Coal</i>	<i>6</i>
		<i>11</i>	<i>Charcoal</i>	<i>2</i>
		<i>12</i>	<i>Coal</i>	<i>15</i>
			<i>Tap 78"</i>	
			(Note character and thickness of floor)	
			Total thickness of coal.	
		Condition, <i>As mined</i>	Time, hr. min.	
		Wt. Gross, <i>25</i> lbs.	Net, lbs.	
		What Nos. shipped by Co.?		
		Excluded from sample: No. <i>109</i>		
		Sample represents <i>76 1/2</i> in.	tons.	
		Impurities? How do they occur?		

Sample No. _____ Can No. *N-21-66* Lab. No. *12822*

Collector, *Netzeband* Coal: Survey No. *6*

Mine, *Herrin B* Co. *Williamson* Index No. *0317-57*

Operator, *C. W. & F. Coal Co.*

Date *June 28, 1921*

Mine, *Herrin B*

Sec. *17* T. *83* R. *2E*

Located, *2 NE* miles from *Herrin*

Location in mine, *Face 11th W off 3rd NE*

GRAPHIC SECTION		DESCRIPTION OF SECTION (AT POINT SAMPLED)		
In.	No.	No.	(Note character and thickness of roof)	Inches
			<i>Shale roof</i>	
		<i>1</i>	<i>Coal (left as roof) 24" App.</i>	
		<i>2</i>	<i>Coal</i>	<i>48</i>
		<i>3</i>	<i>B/B</i>	<i>1 1/2</i>
		<i>4</i>	<i>Coal FeS₂ stringers</i>	<i>26</i>
		<i>5</i>	<i>Pyrite</i>	<i>1/4</i>
		<i>6</i>	<i>Coal</i>	<i>9 1/2</i>
		<i>7</i>		
		<i>8</i>	<i>Coal</i>	
			<i>Tape 91"</i>	
			(Note character and thickness of floor)	
			Total thickness of coal.	
		Condition, <i>As mined</i>	Time, hr.	min.
		Wt. Gross, <i>25</i> lbs.	Net, lbs.	
		What Nos. shipped by Co.?		
		Excluded from sample: No. <i>1, 5</i>		
		Sample represents <i>90 1/2</i> in.		tons.
		Impurities? How do they occur?		

Sample No. _____ Can No. *N-21-67* Lab. No. *12823*
 Collector, *Natzaband* Coal: Survey No. *6*
 Mine, *Herrin B* Co. *Williamson* Index No. *0317.57*
 R.—COAL SAMPLE SHEET.

Operator, *C.W. & F. Coal Co*
 Mine, *Herrin B.*
 Located, *2 N.E.* miles from *Herrin*
 Location in mine, *Face 5th N.W.*

Date *June 28, 1921*
 Sec. *17* T. *8 S.* R. *2 E*

GRAPHIC SECTION		DESCRIPTION OF SECTION (AT POINT SAMPLED)		
In.	No.	No.	(Note character and thickness of roof)	Inches
			<i>Shale roof</i>	
		<i>1</i>	<i>Coal roof 24" App.</i>	
		<i>2</i>	<i>Coal</i>	<i>7 1/2</i>
		<i>3</i>	<i>Ch' coal</i>	<i>1/8</i>
		<i>4</i>	<i>Coal</i>	<i>27 1/2</i>
		<i>5</i>	<i>Charcoal</i>	<i>1/8</i>
		<i>6</i>	<i>Coal</i>	<i>30</i>
		<i>7</i>	<i>B.B. Coal & clay</i>	<i>1/2</i>
		<i>8</i>	<i>Coal</i>	<i>24</i>
			<i>Tape 88"</i>	
			(Note character and thickness of floor)	
			Total thickness of coal.	
		Condition, <i>As mined</i>	Time, hr.	min.
		Wt. Gross, <i>25</i> lbs.	Net, lbs.	
		What Nos. shipped by Co.?		
		Excluded from sample: No. <i>1</i>		
		Sample represents <i>88</i> in.	tons.	
		Impurities? How do they occur?		

Sample No. _____ Can No. *14-21-68* Lab. No. *12824*

Collector, *Netzeband* Coal: Survey No. *6*

Mine, *Herrin B* Co. *Williamson* Index No. *0317-57*

Operator, *O. W. & F. Coal Co* Date *June 29, 1921*
 Mine, *Herrin B* Sec. *17* T. *85* R. *2E*
 Located, *2 1/2* miles from *Herrin*
 Location in mine, *Cross cut 15' from face between Main & Back W.*

GRAPHIC SECTION		DESCRIPTION OF SECTION (AT POINT SAMPLED)		
In.	No.	No.	(Note character and thickness of roof)	Inches
			<i>Shale roof</i>	
		<i>1</i>	<i>Coal roof</i>	
		<i>2</i>	<i>Coal</i>	<i>13 1/2</i>
		<i>3</i>	<i>Ch. coal</i>	<i>1/8</i>
		<i>4</i>	<i>Coal</i>	<i>40</i>
		<i>5</i>	<i>Clay</i>	<i>1/8</i>
		<i>6</i>	<i>Coal</i>	<i>6 1/2</i>
		<i>7</i>	<i>Shale B.B.</i>	<i>1 1/2</i>
		<i>8</i>	<i>Coal</i>	<i>23 3/4</i>
			<i>Floor Clay</i>	
 <i>tape 89 1/2"</i> (Note character and thickness of floor) Total thickness of coal.				
Condition, <i>As mined</i>		Time,	hr.	min.
Wt. Gross, <i>25</i> lbs.		Net,	lbs.	
What Nos. shipped by Co.?				
Excluded from sample: No. <i>1, 7</i>				
Sample represents <i>88</i> in.		tons.		
Impurities? How do they occur?				

Sample No. _____ Can No. *IX-21-69* Lab. No. *12841*
 Collector, *Natzaband* Coal: Survey No. *6*
 Mine, *Herrin B* Co. *Williamson* Index No. *0317-57*
 R.—COAL SAMPLE SHEET.

Operator, *C. W. & F. Coal Co.*

Date *June 29, 1921*

Mine, *Herrin B*

Sec. *17* T. *8S* R. *2E*

Located, *2 N.E.* miles from *Herrin*

Location in mine, *Cross cut 15' from face between Main & Back W*

GRAPHIC SECTION		DESCRIPTION OF SECTION (AT POINT SAMPLED)		
In.	No.	No.	(Note character and thickness of roof)	Inches
			<i>Roof shale</i> <i>1 Coal</i> <i>2 Ch' coal</i>	<i>20 1/2</i>
			<i>Sample of top coal</i> <i>at same location as</i> <i>N-21-69.</i>	
			(Note character and thickness of floor)	
			Total thickness of coal.	
		Condition, <i>As mined</i>	Time, hr. min.	
		Wt. Gross, <i>7</i> lbs.	Net, lbs.	
		What Nos. shipped by Co.?		
		Excluded from sample: No.		
		Sample represents <i>20 1/2</i> in.	tons.	
		Impurities? How do they occur?		

Sample No.

Can No. *N-21-70*

Lab. No. *12842*

Collector, *Netzeband*

Coal: Survey No. *6*

Mine, *Herrin B*

Co. *Williamson*

Index No. *0317-57*

Mine Name or No. "B" Mine Address Herrin Ill

OPERATOR Chicago Wilmington & Franklin Coal Co.

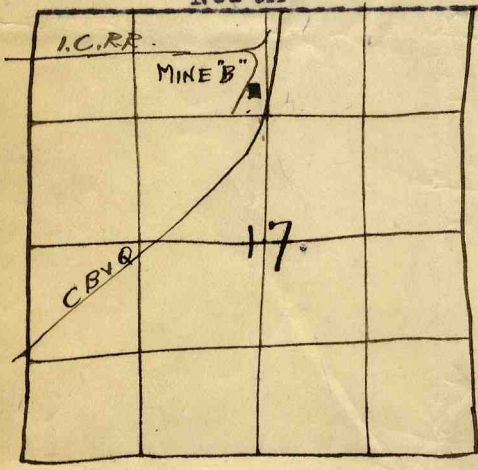
MAIN OFFICE ADDRESS 407 W. Connick Bldg
Chicago Ill

Location of Mine:
Township Name Herrin County Williamson

Section No. 17 Township 8 Range ^N2 ^EW

Indicate location of mine and position of R.R. in plat of section below.

North



Kindly state number of feet from quarter section lines:

From N. line _____

From E. Line. _____

From S. Line. _____

From W. Line. _____

Idle entire year 19

Operated by C&F Coal Co. Yes No

Abandoned (Date) _____
19 _____

Served by CB&Q, ~~_____~~ I.C.R.R.
Surface landing is 385 feet above sea level or about _____ feet (above) (below) railroad station at ~~West Frankfort~~ (nearest town) Herrin
Depth to top of coal is 220 feet.
Average thickness of coal is 10 feet 0 inches.