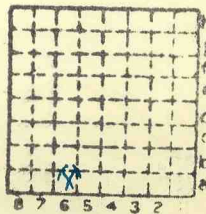


ISGS Index No. 4114

Ensminger CC.

521



Sec. 29

T. 9 ~~N.~~ S.

R. 4 ~~E.~~

Index No.





Mine originally operated by: (1)

Ensminger Coal Co.

Date

Original name or number:

Illinois Coal Report

p.

LATER OPERATORS

Date	Operator	Name or No.
2		
3		
4		
5		
6		
7		
8		
9		
10		
11		
12		
13		
14		

* Also owners

#See ownership sheet

Railroad, Wagon, Idle, Abandoned Drift

LOCAL MINE

IDENTIFICATION

County No. 521

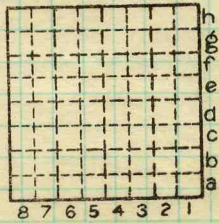
Coal No.

5

Quad. Marion

Part

County Williamson



Sec. 29

T. 9 S.

R. 4 E. W.

Index No.

0829 a6

COAL MINE OPERATOR



LOCATION AND ELEVATION

Location: side R. R. side R. R. side Highway No. on top. map Location sheet

Elevation: Method, 1. Est. () ft. 2. Inst. (kind B) 439 ft.

By Data sheet DEPTH Authority To coal ft. Authority Rail to rail ft. Top of coal above rail. (Est. Rule) ft. To coal ft.

ALTITUDE OF TOP OF COAL By estimated data By instrumental data 439 ft.

Thickness Max. in. Min. in. Aver. 54 in.

GEOLOGICAL DATA

Mine notes, date Coop No. Pyr. inv. Coal Ash inv.

CHEMICAL DATA

Analyses Face U. I. B. M. Others Car U. I. B. M. Others Org. Sulf U. I. B. M. Others Ash fusion U. I. B. M. Others Ash anal. U. I. B. M. Others U. I. B. M. Others

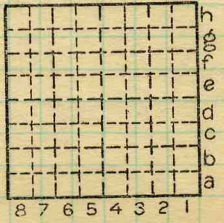
Classification Misc. tests: Coking. Cleaning Boiler

Published descriptions:—

Railroad, Wagon, Idle, Abandoned Drift

IDENTIFICATION

County No. 521 Coal No. 5 Part Quad. Marion County Williamson



Sec. 29 T. 9 S. R. 4 E. W. Index No. 0829 26

COAL MINE LOCATION AND DATA