

2407

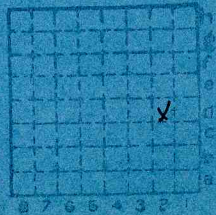


Form 180 Blue

*unidentified*

Mine index 3737

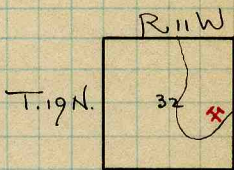
*No Cards*



**Sec. 32 D2**

T.	<i>A</i>	N.
		S.
R.	<i>11</i>	E.
		W.
Index No.		





See Folio 67, Ec. Geol. Sheet.  
Columnar Section Sheet

Vermilion

COUNTY NO. 505 1732 a





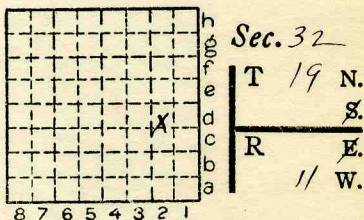
Location and Elevation Data

Location: Exact Approximate
(Approximate only if no trace of record of original exists)
Location by ABD Mines Book
Date Notebook No. Page
Looseleaf ref.
Map files No.

Description of Location

Position in sec., 1/4 sec., 40 acres

feet from North line
feet from East line
feet from South line
feet from West line



Other description: Slope Mines?
1899 says shaft mine

Farm
No.
Company Brookside (Whites #1)
No. #1
County No.

Elevation ft.
By

Method: Level, transit, alidade, hand level

Elevation of
Height of point above ground
Date Notebook P.
Looseleaf ref.

Map files No.
Description of item: (drill hole, mine, etc.) SA
60' to 7' of #6
County Vermilion Quadrangle 149 Index No. 1732 D2







Mine originally operated by: (1)

Date

BROOKSIDE COAL M. Co.

1897 ~~1900~~

Original name or number: WHITES No. 1.  
Illinois Coal Report p.

LATER OPERATORS

Date

Operator

Name or No.

2 idle 1898

3

4

5

6

7

8

9

10

11

12

13

14

\*Also owners

#See ownership sheet

Railroad, Wagon, Strip, Idle, Abandoned

Slope mine (?)

1903

IDENTIFICATION

County No. \_\_\_\_\_

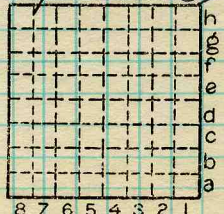
Coal No. \_\_\_\_\_

Coal Report No. \_\_\_\_\_

6

Quad. DANVILLE

County VERMILION



Sec. 32

T. 19 N. 8.

R. 11 W.

Index No. 173202

COAL MINE OPERATOR





( Sheets ) **COAL PRODUCTION** ( Sheet )

Period				Tons			
Mo.	Day	Year	Mo.		Day	Year	
						1900	60,226
						1901	29,948
(SEE # 2 MINE COMBINED PROD.)						1902	
						1903	

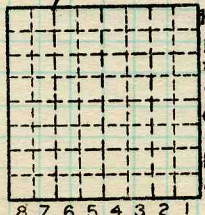
1899 = 21,000  
 1899 = 112,958

ABD

SUMMARIES		
No.	to	No.
1900		1901
		90,174

Railroad, Wagon, Strip, Idle, Abandoned 1903 Slope mine (?) Sec. 32

IDENTIFICATION  
 County No. \_\_\_\_\_ Coal No. \_\_\_\_\_  
 Coal Report No. \_\_\_\_\_  6  
 Quad. DANVILLE  
 County VERMILION



T. 19 N.  
 R. 11 W.  
 Index No.

173202

