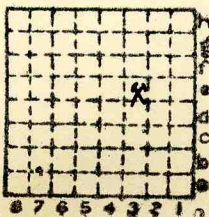




Form 180

OLD BEN COAL CORP. #19  
Co. No. 255  
Mi. # 56



Sec. 4

T. ~~11~~ 6 S.  
R. 2 E. ~~W~~

Index No.





Mine originally operated by: (1)

Date

1907

William P. Rend Collieries Co.

Rend

Original name or number:

Illinois Coal Report

p. #1

LATER OPERATORS

Date Operator Name or No.

2  
3  
4  
5  
6  
7  
8  
9  
10  
11  
12  
13  
14

1920 Old Ben Coal Corp.

#19

\* Also owners

#See ownership sheet

Railroad, Wagon, Idle, Abandoned

Shaft 567'

SHIPPING MINE

IDENTIFICATION

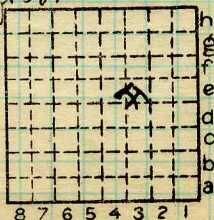
County No. 255

Coal No. 6

Quad.

Part

County Franklin



Sec. 4

T. 6 N. S.

R. 2 E. W.

Index No.

COAL MINE OPERATOR

0604.3e





( Sheets ) COAL PRODUCTION ( Sheet )

Period						Tons	U.S. No.
Mo.	Day	Year	Mo.	Day	Year		
					1915	337 859	633
		1925			1926 - 2 <sup>nd</sup> (Rept. of mines)		

SUMMARIES

No.	to	No.	Tons
1907	-	1930	4 175 234

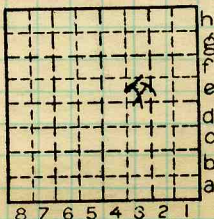
Railroad, Wagon, Idle, Abandoned  
IDENTIFICATION

SHIPPING MINE

County No. 255 Coal No. 6

Quad. 1na Part

County Franklin



Sec. 4

T. 6 N. S.  
R. 2 E. W.

Index No.

COAL MINE-PRODUCTION

0604.3e





LOCATION AND ELEVATION

Location: side **C. B. & Q** R. R.  
 side R. R.  
 side Highway No.

on top. map Location sheet

Elevation: Method, 1. Est. ( ) \_\_\_\_\_ ft.  
 2. Inst. (kind **PT**) **413.3** ft.

By **WBE.** Data sheet  
 DEPTH  
 Authority To coal \_\_\_\_\_ ft.  
 Authority Rail to rail \_\_\_\_\_ ft.  
 Top of coal above rail. (Est. Rule) \_\_\_\_\_ ft.  
 To coal **570** ft.

ALTITUDE OF TOP OF COAL

By estimated data \_\_\_\_\_  
 By instrumental data **157** ft.

Thickness  
 Max. **120** in. Min. **84** in. Aver. **105** in.

GEOLOGICAL DATA

Mine notes, date \_\_\_\_\_

Coop No. **56** Pyr. inv. Coal Ash inv.

CHEMICAL DATA

Analyses Face	U. I.	<b>5208-9-11</b>	B. M.	Others
Car	U. I.		B. M.	Others
Org. Sulf	U. I.		B. M.	Others
Ash fusion	U. I.		B. M.	Others
Ash anal.	U. I.		B. M.	Others
	U. I.		B. M.	Others

Classification

Misc. tests: Coking. Cleaning Boiler

Published descriptions:—

Railroad, Wagon, Idle, Abandoned

**SHIPPING MINE IDENTIFICATION**

County No. **255**

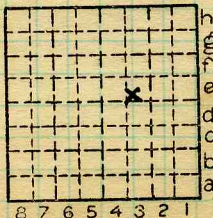
Coal No.

**6**

Quad. **Ina**

Part

County **Franklin**



Sec. **4**

T. **6** S.

R. **2** E.

Index No.

**0604.3e**

COAL MINE LOCATION AND DATA





Location and Elevation Data

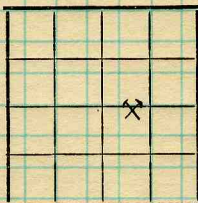
Location: Exact  Approximate \_\_\_\_\_  
 (Approximate only if no trace or record of original exists)

Location by W.B. Roe  
 Date 7-28-1932 Notebook No. 614 Page 15 (2103)  
 Looseleaf ref. \_\_\_\_\_  
 Map files No. 5-28-28

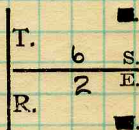
Description of location

Position in sec.,  $\frac{1}{4}$  sec., 40 acres

\_\_\_\_\_ feet from North line  
1800 feet from East line  
2550 feet from South line  
 \_\_\_\_\_ feet from West line



Sec. 4



Farm \_\_\_\_\_  
 No. \_\_\_\_\_  
 Company old Ben Coal Corporation  
 No. 19 Mine (old Rend No. 1)  
 County No. 78

Other description: MN 1912

Elevation 408.6 ft.

By W.B. Roe

Method: Level, transit, alidade, hand level  
Plane table and alidade

Elevation of Corb

Height of point above ground \_\_\_\_\_

Date 7-28-1932 Notebook 614 P. 15 (2083)

Looseleaf ref. \_\_\_\_\_

Map files No. 5-28-28

Description of item: (drill hole, mine, etc.) Air shaft - abandoned shipping mine

**SHIPPING MINE**

County Franklin  
 (45576-1M-10-30)

Quadrangle Ina NEW

Index No. 0604.3d





Location and Elevation Data

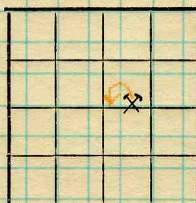
Location: Exact  Approximate  
 (Approximate only if no trace or record of original exists)

Location by W.B. Roe  
 Date 7-28-1932 Notebook No. 614 Page 15-(2104)  
 Looseleaf ref. \_\_\_\_\_  
 Map files No. 5-28-28

Description of location

Position in sec.,  $\frac{1}{4}$  sec., 40 acres

\_\_\_\_\_ feet from North line  
1825 feet from East line  
2775 feet from South line  
 \_\_\_\_\_ feet from West line



Sec. 4  

T.	6	S.
R.	2	E.

Other description: MN 1912  
 Farm \_\_\_\_\_  
 No. \_\_\_\_\_  
 Company Old Ben Coal Corporation  
 No. 19 mine (Old Bend No. 1)  
 County No. 255

Elevation 413.3 ft.  
 By W.B. Roe

Method: Level, transit, alidade, hand level  
Plane table and alidade

Elevation of Top of rail  
 Height of point above ground 3"

Date 7-28-1932 Notebook 614 P. 15(2104)  
 Looseleaf ref. \_\_\_\_\_

Map files No. 5-28-28

Description of item: (drill hole, mine, etc.) Hoist shaft - abandoned shipping mine

**SHIPPING MINE**

County Franklin (45576-1M-10-30) Quadrangle Ina Index No. 0604.3e



OLD BEN COAL CORP.  
MINE No. 19

Vertical scale 1" = 20'

Horizontal scale 1" = 1000'

Surface elev of H.S. (Top of Rail) = 413.3

Depth of shaft (Rail to Rai) = 518.9

Top of Rail at Shaft bottom taken as 100.0

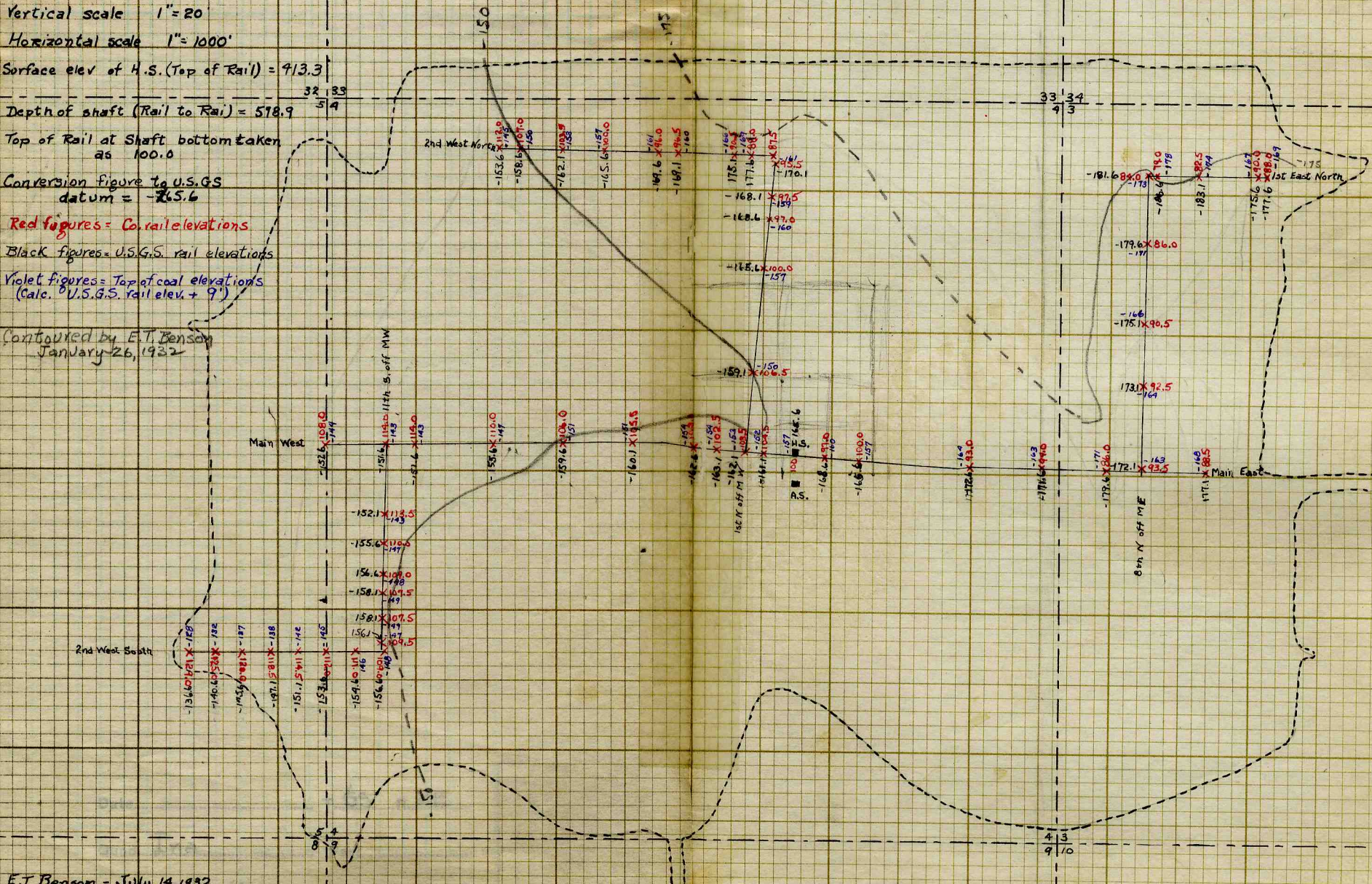
Conversion figure to U.S.G.S datum = -265.6

Red figures = Co. rail elevations

Black figures = U.S.G.S rail elevations

Violet figures = Top of coal elevations (Calc. of U.S.G.S. rail elev. + 9')

Contoured by E.T. Benson  
January 26, 1932



E.T. Benson - July 14, 1932



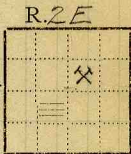


COAL MINING INVESTIGATIONS  
COOPERATIVE AGREEMENT

Mine Name or No., #1  
mile from

Operator, 1912 *W. P. Rend Collieries Co.*

Operator, 191



68 T.

Sec. 4  
SW 1/4 NE 1/4

Entrance, *Shaft* Elev. *421* ft. { above,  
Depth to bottom coal, *580* ft. Alt. *-159*

SURFACE DATA.

A. Topography *Rolling*

See Sheet #1

B. Surficial materials, (1) Character

- (2) Thickness,
- (3) Effect on mining and shaft-sinking, of former drainage lines, underground water strata, etc.

C. Outcrops, (1) Character,

(2) Structure, *A series of small folds.*

(3) Fossil horizons

Collection No.,

(4) Evidences of subsidence,

D. Note collection of mine maps, drill records and shaft logs.



See

See

See

See

See

See drill record sheet.

E. Notes on surrounding area,

*A*

See

Coal bed name: Local, # *6*

Survey # *6*

Collector, *KD White*

State No. *0604*

Mine, # *1*

Co. *Franklin* Co-op. No. # *5 1/2*









## UNDERGROUND DATA (cont'd.)

## K. (5) Physical character of coal in benches,

- (a) Relative hardness, *Coal is harder towards bottom of bed*
- (b) Lustre, *Bright and glossy.*
- (c) Fracture, *Irregular*
- (d) Texture, *Banded.* See
- (6) Impurities in coal, other than bedded,
- (a) Kind, *Sulphur streaks, (cat faces) sulphur lenses.*
- (b) Position and persistence, *Irregular in occurrence and position.*
- (c) Rejected, *yes.* Ease of separation, *difficult.* See

L. Floor: (1) Material *Fire Clay*

- (2) Thickness *30"±.*
- (3) Variation *Uniform*

(4) Note character, condition, tendency to heave, relation to undercutting, commercial value. *A light gray clay, the first few inches with carbon, cleaner below. Clay is very hard upper foot has slickensided surfaces thru it. Heaves badly when wet, apparent a clay of fair quality.*

(5) Clay sample No. *7.*

See #1  
Location, *Main East air Course face 1/2 mile from shaft.*

*Shale also sampled*

## M. Stratigraphy

- (1) Fossiliferous horizons underground,

Collection No.

Location,

## N. Notes on effect of deep drilling in coal mine areas.

See

Collector, *KD White*Coal #*6*State No. *0604*Mine, *#1 Rend*Co. *Franklin*Co-op. No. *#576*





## INDEX

B Lost first shaft sunk on account of pocket of muck 35' from surface. Present shaft 30' West, no sand encountered. Material, a sticky bluish muck or clay.

K<sub>r</sub>

## Section

Face Main East Air Course  $\frac{1}{2}$  Mile from Shaft.

- 1 Top Coal 18"
- 2 6" Bench, very bright, hard, contains a large amount of glance coal, and calcite checkered thru it. 7"
- 3 Middle bed, dirtier and harder than 6" bed, a considerable number of dirt, sulphur, and mother coal bands scattered thru bed of irregular vertical and horizontal extent. Coal is bright, but slightly duller than 6" bed. Bands of glance coal 6" to  $\frac{1}{4}$ " thick scattered thru the bench. Coal becomes dirtier towards blue band. Cat faces also occur 6'-1"
- 4 Blue Band, a grayish brown shale, hard and with a little carbon scattered it 1"
- 5 Bottom Coal very hard, much harder than other benches. A larger amount of dirt than in other benches. Dirt in brownish bands, a number of sulphur streaks scattered thru it.

L<sub>5</sub>

Clay contains sulphur nodules, some plant remain in up part of clay. Sample upper part of clay; represents 29" of clay. Test pit did not penetrate total thickness of clay. Limestone below.

G, H, J

Roof gray shale, with considerable area's of black and some Limestone. Limestone always has some draw slate between it and coal. Coal dirtier and more impure under black slate than gray shale, and dirtier under L<sub>5</sub> than black slate.

Gray shale sampled 200' West of shaft in entry.

Collector K. R. White

Coal #6

State No. 0604

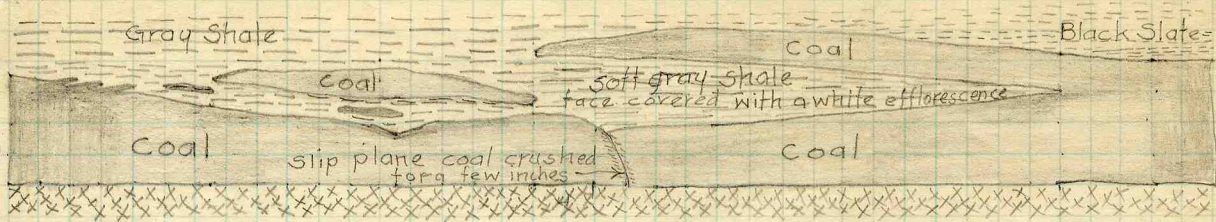
Mine #1 Rend

Co. Franklin

Co-op No. #576

X.—EXTRA SHEET No. 1





0 2 4 6 8 10  
Scale

2<sup>nd</sup> East off 6<sup>th</sup> North, East 1500' from shaft.  
Roll bears N 50° E.

Rolls are fairly prevalent, but <sup>not</sup> in sufficient number to cause serious trouble in mining. direction of rolls very irregular.

considerable cribbing and timbering required to keep up the roof in the rolls.

State No 0604  
Co-op. No. 576  
C (caption)

Coal #6  
Co. Franklin

Collector Kowwhite  
Mine #1 Rend  
Extra sheet #2





0604

COAL MINE NOTES.

COUNTY *Franklin*

TOWN *Sesser*

MAP No. *0704*

T. *6S*

R. *2E*

S. *4 N.E. 1/4*

OPERATOR *William P. Rend & Co.*

*Old Ben #19*

OFFICE *115 Dearborn St. Chicago*

MINE *Rena City #1*

TIPPLE

ENGINES

BOILERS

DRUM

SHAFT

CAGE

HAULAGE

CARS

VENTILATION

DRAINAGE

SPRINKLING

WORKING SYSTEM

MINING METHODS

SIZE OF ENTRIES—MAIN

CROSS

ROOM

NECK

SIZE OF PILLARS—MAIN

CROSS

ROOM

SHAFT

CHAIN

BARRIER

AMOUNT OF TIMBERING

SIZE

PROPORTION OF COAL UTILIZED

AMOUNT AND CHARACTER OF WASTE

ACREAGE OF COAL MINED

ACREAGE OF COAL REMAINING

PROPORTION OF MINE RUN AND SCREENED COAL

METHOD OF SIZING

RESCREENED

SIZES

PER CENT

PROPORTION AND SIZE OF WASHED COAL

DAILY OUTPUT

UTILIZATION

MARKETS

FREIGHT RATES

SELLING PRICES AT MINE

0604

*0704*

COAL LAND OWNED

LEASED

HELD IN FEE

COST OF LAND OWNED

LEASED

HELD IN FEE

ADDITIONAL NOTES





COAL MINE NOTES.  
CONTINUED.

OPERATOR *William P. Reind & Co.*

MINE *Rena City #1*

ENTRANCE

NAME OF COAL BED

0604

ELEVATION

THICKNESS OF COAL

DEPTH TO FLOOR

MAX.

MIN.

AV.

ALTITUDE OF COAL

LOCATION OF SECTION

No. SECTION.

No.	SECTION.	In.
1		
2		
3		
4		
5		
6		
7		
8		
9		
10		
11		
12		
Tape		Total

SAMPLE No.

CAN No.

CONDITION

GROSS WEIGHT

TIME EXPOSED

NOT SHIPPED

NOT INCLUDED

SECTION

Feet


PHYSICAL PROPERTIES BY NUMBERS

ROOF

FLOOR

DIP

FAULTS, ETC.

GAS

COLLECTOR

REFERENCE

DATE

*C.L. Scroggs.*

0604

0604





Old #19

COAL MINING INVESTIGATION

COOPERATIVE AGREEMENT

Operator, *W. P. Rend Collieries Co.* Date, *7/25* 191*2*.  
 Mine, Located *1 1/4* miles from *Rend.*  
 Location in mine, *Face 1 N. W. entry*  
 Total (vertical) depth from surface at point of sampling, *585* ft.

In describing the beds and character of the members, note any member that is rejected by the miner. Note all clay and sulphur partings, whatever their thickness. Exclude from sample all clay and sulphur partings  $\frac{3}{8}$  inch thick or over (and even those of less thickness if they are rejected at mine or tipple).

SECTION OF BED AT POINT SAMPLED

No.	DESCRIPTION	FEET	INCHES
1	Coal	3	9 3/4
2	Blue clay band		3
3	Coal		1 3
4	Blue clay band		1
5	Coal		4
6	Sulphur band	131	1 3 1/2
7	Coal		4
8	Blue clay band		1 3/4
9	Coal		1 1/4
10	Blue dirt		4
11	Coal	1	
12			
13	# of coal not in-		
14	cluded.		
15			
16			
17			
	TOTAL,	6	2 1/4

Is coal wet or dry?

Time exposed, hours, *53* minutes.

Weight, gross, net.

What are the impurities, and how do they occur? *Clay band and sulphur band*

What are shipped? *1 3 5 7 9 10 6*

What are excluded from the sample? *2 4 6 8 10 6*

\*Direction (N., NE., etc.). †Nearest railway station.

Town, *Rend* Mine, *No 1* Co. *Franklin*  
 Sample No. *3* Can No. *40* No. *56*

I.—COAL SAMPLE SHEET. Sampler, *J. M. Webb* *0604*  
 #5211





COAL MINING INVESTIGATION

COOPERATIVE AGREEMENT

Operator, *W.P. Rend Galleries Co.* Date, *7/23* 191 *2*  
 Mine, Located \_\_\_\_\_ miles\* from \_\_\_\_\_

Location in mine, *Face 5 South West*  
 Total (vertical) depth from surface at point of sampling, *585* ft.

In describing the beds and character of the members, note any member that is rejected by the miner. Note all clay and sulphur partings, whatever their thickness. Exclude from sample all clay and sulphur partings  $\frac{3}{8}$  inch thick or over (and even those of less thickness if they are rejected at mine or tippie).

SECTION OF BED AT POINT SAMPLED

No.	DESCRIPTION	FEET	INCHES
1	<i>Coal</i>	<i>6</i>	
2	<i>Blue dirt band</i>		<i>1</i>
3	<i>Coal</i>	<i>1</i>	<i>6 1/2</i>
4			
5			
6			
7			
8			
9	<i>Top coal not</i>		
10	<i>included.</i>		
11			
12		<i>129</i>	
13			
14			
15			
16			
17			
	TOTAL,	<i>7</i>	<i>7 1/2</i>

Is coal ~~wet~~ or dry?    
 Time exposed, \_\_\_\_\_ hours, *51* minutes.   
 Weight, *44* gross, \_\_\_\_\_ net.   
 What are the impurities, and how do they occur? *Blue dirt Band*

What are shipped? *1 3*   
 What are excluded from the sample? *2*

Coal bed, *6*   
 \*Direction (N., NE., etc.). †Nearest railway station.

Town, *Rend* Mine, *No. 1* Co. *Franklin*   
 Sample No. \_\_\_\_\_ Can No. *32* No. *56*

I.—COAL SAMPLE SHEET. Sampler, *Jim Webb*   
 #5209 *0604*





COAL MINING INVESTIGATION

COOPERATIVE AGREEMENT

OB #19

Operator, *W. P. Rend Collieries Co.* Date, *7/25* 191*2*  
 Mine, *No. 1* Located *14* miles *N.W.* from *Rend*  
 Location in mine, *Face main west*  
 Total (vertical) depth from surface at point of sampling, *585* ft.

In describing the beds and character of the members, note any member that is rejected by the miner. Note all clay and sulphur partings, whatever their thickness. Exclude from sample all clay and sulphur partings  $\frac{3}{8}$  inch thick or over (and even those of less thickness if they are rejected at mine or tippie).

SECTION OF BED AT POINT SAMPLED

No.	DESCRIPTION	FEET	INCHES
1	<i>Coal</i>	<i>4</i>	<i>1/2 1/2</i>
2	<i>Clay band</i>		<i>1</i>
3	<i>Coal</i>	<i>1</i>	<i>10</i>
4			
5			
6			
7			
8			
9	<i>Top of coal not included.</i>	<i>10 1/2</i>	
10			
11			
12			
13			
14		<i>182</i>	
15			
16			
17			
TOTAL,		<i>6</i>	

Is coal ~~wet~~ or dry?

Time exposed, \_\_\_\_\_ hours, *49* minutes.

Weight, *39* gross, \_\_\_\_\_ net.

What are the impurities, and how do they occur? *clay band.*

What are shipped? *1 3*

What are excluded from the sample? *2* Coal bed, *6*

\*Direction (N., NE., etc.). †Nearest railway station.

Town, *Rend* Mine, *No. 1* Co. *Franklin*  
 Sample No. \_\_\_\_\_ Can No. \_\_\_\_\_ No. \_\_\_\_\_

I.—COAL SAMPLE SHEET. Sampler.

#5208

*Jm Well* *56*  
*0604*



COAL MINING INVESTIGATION

COOPERATIVE AGREEMENT

Operator, *H. P. Rend Collieries Co.* Date, *7/25*  
 Mine, *No. 1* Located *1.4* miles from *† Rend* 191 *2*  
 Location in mine, *Room 44 2*  
 Total (vertical) depth from surface at point of sampling, *585* ft.

In describing the beds and character of the members, note any member that is rejected by the miner. Note all clay and sulphur partings, whatever their thickness. Exclude from sample all clay and sulphur partings  $\frac{3}{8}$  inch thick or over (and even those of less thickness if they are rejected at mine or tippie).

SECTION OF BED AT POINT SAMPLED

No.	DESCRIPTION	FEET	INCHES
1	<i>Coal clean &amp; bright</i>	<i>1</i>	<i>8</i>
2			
3			
4			
5			
6		<i>130</i>	
7			
8			
9	<i>Top of coal sample.</i>		
10			
11			
12			
13			
14			
15			
16			
17			
TOTAL,		<i>1</i>	<i>8</i>

Is coal ~~wet~~ or dry?  
 Time exposed, *17* hours, *15* minutes.  
 Weight, *17* gross, net.  
 What are the impurities, and how do they occur? *None*  
 What are shipped? *Total*  
 What are excluded from the sample?

\*Direction (N., NE., etc.) Coal bed, *6*  
 †Nearest railway station.

Town, *Rend* Mine, *No. 1* Co. *Franklin*  
 Sample No. *4* Can No. *23* No. *56*

I.—COAL SAMPLE SHEET. Sampler.

#5210

*J. M. [Signature]*

*9604*